

Technical Report

Technical & Derivative Report

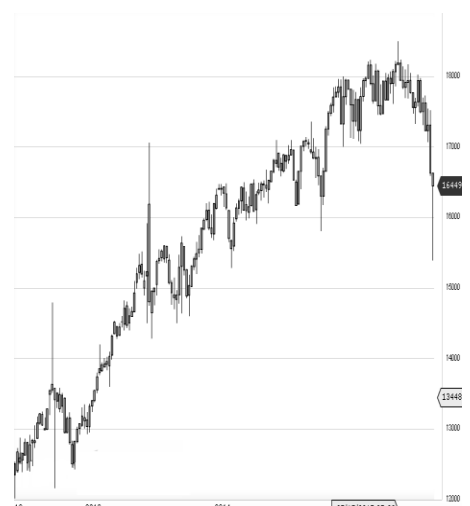
World Indices	LTP	Daily Ch(Pts)	Daily Ch(%)
Dow Jones	16330	-179	-1.09
Nasdaq	4756	-72	-1.50
S&P 500	1942	-24	-1.23
FTSE 100	5935	-172	-2.83
DAX	9570	-377	-3.80
Hang Seng	21365	-431	-1.98
Nikkei	18070	-362	-1.96
Sensex	25651	-541	-2.07
Nifty	7812	-165	-2.07

Commodity /Forex	LTP	Daily Ch(Pts)	Daily Ch(%)
Gold (\$/Oz)	1123.80	-1.00	-0.09
Silver (\$/Oz)	14.77	0.01	0.06
Copper(USD/lb.)	230.00	0.25	0.11
Brent Crude(USD/bbl)	49.22	0.14	0.29
USD/INR	65.88	0.14	0.22
USD/YEN	120.20	0.05	0.04
USD/EUR	1.1115	-0.0005	-0.04

Support/Resistance levels for Indian Equity Indices					
	S1	S2	CMP	R1	R2
Sensex	25445	25280	25651	25840	26010
Nifty	7750	7700	7812	7870	7920
Nifty (Fut)	7735	7685	7797	7855	7905

Pivot Level	
Sensex	25854
Nifty	7873

US: US market closed more than 1 percent lower Tuesday as investors weighed declines in oil, concerns about global growth, and the implications of the Federal Reserve's rate hike decision. Technically DJIA is presently trading at the 5th leg through Elliot wave count with negative divergence in oscillators.



Closing Brief

Metal, mining, banking and power sector stocks led steep losses for key benchmark indices. The Sensex fell below the psychological 26,000 mark. The Nifty failed to retain the psychological 8,000 after surpassing that level in intraday trade.

Technical Build up

- ❖ Bearish Marubazu candle with decrease in volume.
- ❖ Sell crossover in oscillators.
- ❖ Lower band of Bollinger exist at 7599
- ❖ Crucial moving average of 20/50 SMA are at 7828 and 8211
- ❖ 200 SMA trend deciding level exist at 8396

Outlook for the day

Indian equity market ended the session on a lower note as Asian Development Bank's forecast on Asian Development Outlook has lowered the growth projections for India followed by sharp drop in European markets. The current fiscal is projected to be 7.4 percent from the previous 7.8 percent. On the technical front Nifty formed a bearish Marubazu candle which was further confirmed with bearish Gravestone Doji indicating of a reversal process. Hence on the upside now 8050 would remain a strong resistance level for the coming few weeks. However strength will be intact if Nifty is able to maintain above 7820 for an upside target of 7930-7950. On the F&O front rollover seems to have started for the September expiry at 42% while basis now has entered into negative territory. Indian VIX increased the previous by over 10%. On the option front writing activity seems to have started for 8000 strike price call option and 7900 strike price put option.



Increase in OI with Increase in Price (Long Buildup)					
Symbol	Prev OI	Curr OI	OI Chg (%)	Curr Pr.	Pr.Chg (%)
WIPRO	12021	14054	16.9	592.9	0.10
MINDTR					
EE	593	635	7.1	1461.10	2.90
APOLLO					
HOSP	1918	1980	3.2	1375.0	0.50
CASTRO					
LIND	1576	1626	3.2	440.7	0.90

Increase in OI with Decrease in Price (Short Buildup)					
Symbol	Prev OI	Curr OI	OI Chg (%)	Curr Pr.	Pr.Chg (%)
ZEEL	7181	8852	23.3	389.0	-3.3
ITC	23159	28526	23.2	310.1	-1.5
AMBUJA					
CEM	11149	13139	17.9	207.20	-1.5
GRASIM	6531	7622	16.7	3416.0	-1.2
NTPC	9521	11003	15.6	121.0	-4.8

Nifty declined by 2.07% with Nifty future added 41.2 lakh shares in open interest and stock future shaded 43.3 lakh shares in open interest.

- Nifty PCR decreased to 0.94 from 0.99
- Total Nifty Calls added 45.9 lakh shares in open interest.
- Total Nifty Puts added 8.4 lakh shares in open interest.
- Maximum open interest (Nifty) in Calls for Apr. series is at 8000 and 7800 put.
- FII's sold net Rs.1052.24 (provisional), while DIIs bought net Rs.378.26 Cr in cash market.
- FII bought net Rs.1898.84 Cr. In F&O
- Securities in Ban Period: NIL

Nifty Tracker

PARTICULARS	22/09/2015	21/09/2015	18/09/2015	16/09/2015
Spot	7812	7977.1	7981.8	7899.15
% Change in Spot	-2.07%	-0.06%	1.05%	0.89%
Nifty(FUT) Sep	7797.1	7980.05	7982.55	7896.3
Nifty(FUT) Sep Vol.	870824	576788	721290	448314
Nifty(FUT) Sep - OI	17766700	19116950	21852050	21554700
Nifty(FUT) Oct	7832.25	8018	8018.7	7931.15
Nifty(FUT) Oct Vol.	389409	218333	94184	35699
Nifty(FUT) Oct - OI	12251500	6789875	3007100	2132925

Trade Statistics for 22/09/2015

PARTICULARS	NO. OF CONTRACTS	TURNOVER (RS. CR.)	PUT CALL RATIO
NSE Index Futures	15,67,013	38281	-
NSE Stock Futures	23,14,990	59082	-
NSE Index Options	1,64,46,680	3,59,846.43	-
NSE Stock Options	5,66,444	14981	0.58
NSE F&O Total Turnover	2,08,95,127	472,191	1
NSE Cash Turnover	-	17368	-
BSE Cash Turnover	-	2,728.85	-
Total Turnover	-	492287	-

FII Corner (F&O)

FII NET BUYING/SELLING & CHANGE IN OPEN INTEREST (Cr. Rupee)						
PARTICULARS	22/09/2015		21/09/2015		18/09/2015	
	Net Buying /Selling	Change In Open interest	Net Buying /Selling	Change In Open interest	Net Buying /Selling	Change In Open interest
Index Future	-697	3449	-1836	2318	470	3026
Index option	1463	1323	1925	1106	2858	-904
Stock Future	1248	172	317	1547	1090	1147
Stock option	-115	-158	-48	2	-216	-57
Total	1899	4786	358	4973	4202	3212

Market Open Interest

ADDITION/REDUCTION IN MARKET OPEN INTEREST					
Contracts	22/09/2015	21/09/2015	18/09/2015	16/09/2015	15/09/2015
Index Futures	2980	1168	1439	-399	-184
Index Options	-180	2386	2132	372	-526
Stock Futures	5325	4340	-3873	4598	534
Stock Options	235	471	19	198	382
F&O Total	8360	8365	-283.14	4769.65	206.17

Nifty Option Open Interest Statistics

NIFTY OPTIONS HIGHEST ADDITION IN OPEN INTEREST						
Expiry	Strike	Option Type	Settlement Price	Volume	Open Interest	Change In OI
29-Oct-15	7800	PE	166.45	145355	2363975	992125
24-Sep-15	7800	CE	53	513427	3168400	939700
24-Sep-15	7850	CE	30.4	134280	868650	780775
29-Oct-15	7400	PE	59.05	100751	1946825	701925
29-Oct-15	7600	PE	102.6	106009	1570625	577700
29-Oct-15	8000	CE	94.65	118757	1670825	566600
29-Oct-15	7500	PE	79.05	115688	2159975	523800
29-Oct-15	7700	PE	130	106559	1302225	510175
24-Sep-15	7950	CE	10.15	246018	787950	467400
29-Oct-15	8300	CE	22.95	105463	1825925	463275

NIFTY OPTIONS HIGHEST REDUCTION IN OPEN INTEREST						
Expiry	Strike	Option Type	Settlement Price	Volume	Open Interest	Change In OI
24-Sep-15	7900	PE	122.65	1417893	2112975	-1230825
24-Sep-15	8000	PE	208.55	1048155	2554075	-1073250
24-Sep-15	8400	CE	0.9	79163	2487725	-366125
24-Sep-15	8200	CE	1.4	594637	3407125	-321150
24-Sep-15	8500	CE	0.8	41421	3006575	-289125
24-Sep-15	7600	CE	208	24208	311525	-257075
24-Sep-15	7500	PE	6.55	256217	3960475	-233675
24-Sep-15	7950	PE	164.15	169247	216075	-231850
24-Sep-15	8300	CE	1.1	222656	3256775	-186125
24-Sep-15	7400	PE	3.85	111648	2700700	-163975

Stock Option Open Interest Statistics

STOCK OPTIONS WITH HIGHEST ADDITION IN OPEN INTEREST							
Symbol	Expiry	Strike	Option Type	Settl. Price	Volume	Open Interest	Change in OI
JPASSOCIAT	29-Oct-15	7.5	CE	3.1	295	2288000	2272000
IFCI	29-Oct-15	30	PE	8.45	156	1224000	1216000
ASHOKLEY	24-Sep-15	92.5	CE	0.45	4435	2864000	1120000
IDFC	29-Oct-15	140	CE	2.95	1594	1616000	1062000
JPASSOCIAT	29-Oct-15	7.5	PE	0.15	178	1232000	1032000
ADANIPOWER	29-Oct-15	20	CE	4.6	261	960000	956000
IDFC	24-Sep-15	140	CE	0.65	5418	2826000	812000
RPOWER	24-Sep-15	45	CE	0.1	427	2964000	788000
JPPOWER	24-Sep-15	7.5	CE	0.05	57	5472000	760000
RCOM	24-Sep-15	67.5	CE	0.3	772	1432000	732000

STOCK OPTIONS WITH HIGHEST REDUCTION IN OPEN INTEREST							
Symbol	Expiry	Strike	Option Type	Settl. Price	Volume	Open Int.	Change in OI
JPASSOCIAT	24-Sep-15	10	CE	0.65	852	10216000	-2512000
JPASSOCIAT	24-Sep-15	7.5	CE	3.05	314	2008000	-1384000
RCOM	24-Sep-15	65	PE	1.6	882	920000	-1096000
IFCI	24-Sep-15	30	PE	8.8	151	208000	-1080000
ADANIPOWER	24-Sep-15	20	CE	4.5	256	568000	-596000
DLF	24-Sep-15	125	PE	3.15	1952	718000	-544000
JPASSOCIAT	24-Sep-15	12.5	CE	0.05	620	6904000	-536000
RCOM	24-Sep-15	60	PE	0.25	597	2028000	-464000
UNITECH	24-Sep-15	7.5	CE	0.05	198	9779000	-440000
HINDALCO	24-Sep-15	75	PE	2.65	1126	538000	-388000

Disclosure

- The Research Analysts and /or Ashika Stock Broking Limited do hereby certify that all the views expressed in this research report accurately reflect their views about the subject issuer(s) or securities. Moreover, they also certify the followings:-
- The Research Analyst or Ashika Stock Broking Limited or his/its Associates or his/its relative, has any financial interest in the subject company(ies) covered in this report. **No**
- The Research Analyst or Ashika Stock Broking Limited or his/its Associates or his/its relative, have actual/beneficial ownership of 1% or more in the subject company, at the end of the month immediately preceding the date of the publication of the research report. **No**
- The Research Analyst or Ashika Stock Broking Limited or his/its Associates or his/its relatives has any material conflict of interest at the time of publication of the research report. **No**
- The Research Analyst or Ashika Stock Broking Limited or his/its Associates have received compensation for investment banking or merchant banking or brokerage services or for product other than for investment banking or merchant banking or brokerage services from the companies covered in this report in the past 12 months. **No**
- The Research Analyst or Ashika Stock Broking Limited or his/its Associates have managed or co managed in the previous 12 months any private or public offering of securities for the company(ies) covered in this report. **No**
- The Research Analyst or Ashika Stock Broking Limited or his/its Associates have received any compensation or other benefits from the company(ies) covered in this report or any third party in connection with the Research Report. **No**
- The Research Analyst has served as an officer, director or employee of the company(ies) covered in the research report. **No**
- The Research Analyst or Ashika Stock Broking Limited has been engaged in Market making activity of the company(ies) covered in the research report. **No**

Disclaimer

This report is for the personal information of the authorized recipient and does not construe to be any investment, legal or taxation advice to you. Ashika Stock Broking Ltd. is not soliciting any action based upon it. This report is not for public distribution and has been furnished to you solely for your information and should not be reproduced or redistributed to any other person in any form. The report is based upon information that we consider reliable, but we do not represent that it is accurate or complete, and it should not be relied upon such. Ashika Stock Broking Ltd. or any of its affiliates or employees shall not be in anyway responsible for any loss or damage that may arise to any person from any inadvertent error in the information contained in this report. Ashika Stock Broking Ltd., or any of its affiliates or employees do not provide, at any time, any express or implied warranty of any kind, regarding any matter pertaining to this report, including without limitation the implied warranties of merchantability, fitness for a particular purpose, and non-infringement. The recipients of this report should rely on their own investigations.