

Technical Report

Closing Brief

Key benchmark indices advanced on bargain hunting after logging declines in six trading sessions. The gains for the Sensex were lower in percentage terms than those for the Nifty. All the sectoral indices on BSE closed in the green. The broad market depicted strength.

Technical Build up

- ❖ Bullish Rail road track candle with increase in volume
- ❖ Sell crossover in oscillators.
- ❖ Lower band of Bollinger exist at 7641
- ❖ Crucial moving average of 20/50 SMA are at 7820 and 7976
- ❖ 200 SMA trend deciding level exist at 8269

Outlook for the day

Indian equity market recovered nearly a percent on Thursday and closed around the day's high. There was bargain hunting in the market after the Nifty fell nearly 4% in the last 6 consecutive days. Moreover, fall in oil price and positive US Futures lifted the market. On the technical front Nifty halted the six consecutive day of decline. The oversold reading in oscillator followed by positive divergence in weekly chart necessitated the pullback. The 38.2% retracement support at 7590 since August 2013 also provided immediate cushion for the market. However it must be noted that Nifty is continuing its bear trend and intermediate rallies in between can be noticed and Positive possibilities could sustain if Index strengthens and sustains above 7820. On the F&O front decrease in OI followed by increase in price indicates of short covering in the market followed by decrease in premium and CoC. Indian VIX also dropped as Index saw respite. On the option front put writing were seen in 7800 strike prices while short unwinding of call option in 7800 & 8000 strikes too were noticed. Hence to sum up it seems that Nifty might extend its pullback rally.

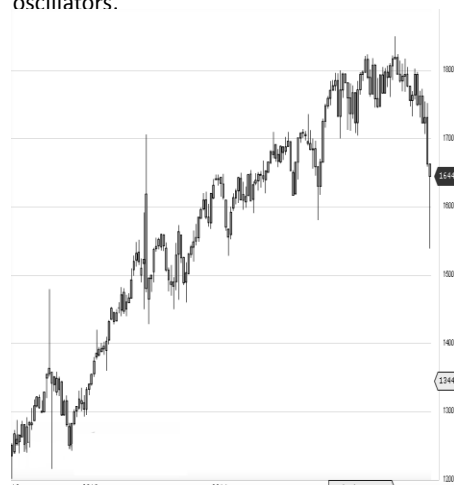
World Indices	LTP	Daily Ch(Pts)	Daily Ch(%)
Dow Jones	17574	82	0.47
Nasdaq	5045	22	0.44
S&P 500	2052	4	0.23
FTSE 100	6088	-38	-0.63
DAX	10598	6	0.06
Hang Seng	21649	-55	-0.26
Nikkei	19266	219	1.15
Sensex	25252	216	0.86
Nifty	7683	70	0.93

Commodity /Forex	LTP	Daily Ch(Pts)	Daily Ch(%)
Gold (\$/Oz)	1068.20	-3.80	-0.35
Silver (\$/Oz)	14.07	-0.04	-0.32
Copper(USD/lb.)	206.70	-0.55	-0.27
Brent Crude(USD/bbl)	39.60	-0.13	-0.33
USD/INR	66.72	-0.12	-0.18
USD/YEN	122.05	0.49	0.40
USD/EUR	1.0932	-0.0009	-0.08

Support/Resistance levels for Indian Equity Indices					
	S1	S2	CMP	R1	R2
Sensex	25140	24975	25252	25340	25540
Nifty	7650	7600	7683	7710	7770
Nifty (Fut)	7680	7630	7710	7740	7800

Pivot Level	
Sensex	25192
Nifty	7661

US: US market closed higher Thursday, well off session highs, but mostly shook off pressure from further decline in oil prices as beaten-down sectors such as energy were among the top gainers. Technically DJIA is presently trading at the 5th leg through Elliot wave count with negative divergence in oscillators.



Increase in OI with Increase in Price (Long Buildup)

Symbol	Prev OI	Curr OI	OI Chg (%)	Curr Pr.	Pr.Chg (%)
HAVELL S	4094	5090	24.3	307.5	8.40
MINDTR EE	767	927	20.9	1481.50	4.20
APOLLO HOSP	1528	1779	16.4	1406	3.10
TVSMO TOR	3819	4160	8.9	279.5	2.90
VOLTAS	3392	3653	7.7	289.0	2.0

Increase in OI with Decrease in Price (Short Buildup)

Symbol	Prev OI	Curr OI	OI Chg (%)	Curr Pr.	Pr.Chg (%)
UNIONB ANK	4463	5388	20.7	150.25	-4.4
BATAIN DIA	4151	4561	9.9	448.2	-2.6
IRB	2380	2586	8.7	237.45	-1.6
YESBAN K	18493	19954	7.9	710.5	-1.1
SRTRAN	4412	4686	6.2	829.0	-3.2

Nifty gained by 0.93% with Nifty future shaded 6.1 lakh shares in open interest and stock future added 278.5 lakh shares in open interest.

- Nifty PCR increased to 0.79 from 0.78
- Total Nifty Calls added 0.5 lakh shares in open interest.
- Total Nifty Puts added 8.0 lakh shares in open interest.
- Maximum open interest (Nifty) in Calls for Oct. series is at 8000 and 7500 put.
- FII's sold net Rs.527.41(provisional), while DIIs bought net Rs.864.71 Cr in cash market.
- FII sold net Rs.116.83 Cr. In F&O
- Securities in Ban Period: IBREALEST & UNITECH

Nifty Tracker

PARTICULARS	10/12/2015	09/12/2015	08/12/2015	07/12/2015
Spot	7683.3	7612.5	7701.7	7765.4
% Change in Spot	0.93%	-1.16%	-0.82%	-0.21%
Nifty(FUT) Dec	7710.75	7644.35	7728.6	7808.8
Nifty(FUT) Dec Vol.	128395	160403	111164	95802
Nifty(FUT) Dec - OI	18865800	19558275	19265025	19354950
Nifty(FUT) Jan	7747.35	7681.65	7766.35	7847.2
Nifty(FUT) Jan Vol.	5468	6445	4858	3882
Nifty(FUT) Jan - OI	1208475	1146300	1081575	974325

Trade Statistics for 10/12/2015

PARTICULARS	NO. OF CONTRACTS	TURNOVER (RS. CR.)	PUT CALL RATIO
NSE Index Futures	2,19,835	12040	-
NSE Stock Futures	4,47,755	22418	-
NSE Index Options	20,83,075	1,20,147.42	-
NSE Stock Options	2,46,309	12764	0.56
NSE F&O Total Turnover	29,96,974	167,369	0.71
NSE Cash Turnover	-	14932	-
BSE Cash Turnover	-	2466.65	-
Total Turnover	-	184768	-

FII Corner (F&O)

FII NET BUYING/SELLING & CHANGE IN OPEN INTEREST (Cr. Rupee)						
PARTICULARS	10/12/2015		09/12/2015		08/12/2015	
	Net Buying /Selling	Change In Open interest	Net Buying /Selling	Change In Open interest	Net Buying /Selling	Change In Open interest
Index Future	-120	308	-123	378	-192	-404
Index option	220	2667	27	3871	178	718
Stock Future	-203	943	81	-451	-193	-452
Stock option	-14	207	-65	54	-57	148
Total	-117	4125	-80	3852	-264	10

Market Open Interest

ADDITION/REDUCTION IN MARKET OPEN INTEREST					
Contracts	10/12/2015	09/12/2015	08/12/2015	07/12/2015	04/12/2015
Index Futures	-17	430	-164	-155	305
Index Options	1008	-941	-785	17	267
Stock Futures	845	6522	2136	2614	2199
Stock Options	601	795	782	868	979
F&O Total	2436	6806	1968.44	3343.99	3750.56

Nifty Option Open Interest Statistics

NIFTY OPTIONS HIGHEST ADDITION IN OPEN INTEREST						
Expiry	Strike	Option Type	Settlement Price	Volume	Open Interest	Change In OI
31-Dec-15	7600	PE	68.85	167500	4381425	555925
31-Dec-15	7700	CE	113.75	175073	2973375	449250
31-Dec-15	7300	PE	18.1	62119	2735500	258825
31-Dec-15	7000	PE	5.9	19100	2586850	203450
31-Dec-15	7400	PE	28.05	95167	4215950	199050
28-Jan-16	8200	CE	29	6626	1067250	136725
28-Jan-16	7400	PE	65.4	5385	572250	131325
25-Feb-16	7500	CE	376.75	1471	375750	94125
25-Feb-16	7400	CE	452.85	1314	283650	91050
31-Dec-15	7100	PE	8.4	18607	1827975	72375

NIFTY OPTIONS HIGHEST REDUCTION IN OPEN INTEREST						
Expiry	Strike	Option Type	Settlement Price	Volume	Open Interest	Change In OI
31-Dec-15	8000	CE	18.15	171904	6949575	-244925
31-Dec-15	7700	PE	104.85	117678	3077625	-191925
31-Dec-15	7500	PE	44.45	139587	6280850	-166200
31-Dec-15	7900	PE	223.75	8862	1705250	-145275
31-Dec-15	8400	CE	2.05	16310	1581425	-134925
31-Dec-15	8100	CE	9.2	67281	4461825	-133750
31-Dec-15	7800	PE	155.55	36875	2335400	-130200
31-Dec-15	8000	PE	307.2	8029	3932900	-126000
31-Dec-15	7800	CE	66.85	211026	3693350	-97200
31-Dec-15	8200	PE	490.65	2348	767775	-92775

Stock Option Open Interest Statistics

STOCK OPTIONS WITH HIGHEST ADDITION IN OPEN INTEREST							
Symbol	Expiry	Strike	Option Type	Settl. Price	Volume	Open Interest	Change in OI
JPASSOCIAT	31-Dec-15	12.5	CE	0.2	211	15840000	3312000
GMRINFRA	31-Dec-15	17.5	CE	0.35	706	32526000	2184000
UNITECH	31-Dec-15	5	PE	0.05	42	4158000	1771000
UNITECH	31-Dec-15	5	CE	1.65	18	2233000	1386000
UNITECH	31-Dec-15	7.5	CE	0.15	64	26642000	1386000
UNITECH	31-Dec-15	7.5	PE	0.95	42	11858000	1309000
GMRINFRA	31-Dec-15	12.5	PE	0.1	158	10179000	1248000
DLF	31-Dec-15	120	CE	2.05	1145	7465000	960000
UNITECH	28-Jan-16	2.5	PE	0.05	12	924000	924000
IFCI	31-Dec-15	27.5	CE	0.4	340	6660000	820000

STOCK OPTIONS WITH HIGHEST REDUCTION IN OPEN INTEREST							
Symbol	Expiry	Strike	Option Type	Settl. Price	Volume	Open Int.	Change in OI
GMRINFRA	31-Dec-15	20	CE	0.1	200	29874000	-975000
ITC	31-Dec-15	320	CE	8.2	862	760000	-408000
RCOM	31-Dec-15	90	CE	0.7	372	5232000	-328000
HDIL	31-Dec-15	65	CE	3.2	202	582000	-276000
SUNPHARMA	31-Dec-15	740	PE	12.55	1694	333000	-258600
DLF	31-Dec-15	110	CE	5.8	450	2055000	-250000
ASHOKLEY	31-Dec-15	100	CE	0.4	838	9555000	-245000
ITC	31-Dec-15	330	CE	4	694	1204800	-241600
JPASSOCIAT	31-Dec-15	10	CE	1.4	18	1296000	-240000
BANKBARODA	31-Dec-15	180	CE	1	348	1438400	-238700

Disclosure

- The Research Analysts and /or Ashika Stock Broking Limited do hereby certify that all the views expressed in this research report accurately reflect their views about the subject issuer(s) or securities. Moreover, they also certify the followings:-
- The Research Analyst or Ashika Stock Broking Limited or his/its Associates or his/its relative, has any financial interest in the subject company(ies) covered in this report. **No**
- The Research Analyst or Ashika Stock Broking Limited or his/its Associates or his/its relative, have actual/beneficial ownership of 1% or more in the subject company, at the end of the month immediately preceding the date of the publication of the research report. **No**
- The Research Analyst or Ashika Stock Broking Limited or his/its Associates or his/its relatives has any material conflict of interest at the time of publication of the research report. **No**
- The Research Analyst or Ashika Stock Broking Limited or his/its Associates have received compensation for investment banking or merchant banking or brokerage services or for product other than for investment banking or merchant banking or brokerage services from the companies covered in this report in the past 12 months. **No**
- The Research Analyst or Ashika Stock Broking Limited or his/its Associates have managed or co managed in the previous 12 months any private or public offering of securities for the company(ies) covered in this report. **No**
- The Research Analyst or Ashika Stock Broking Limited or his/its Associates have received any compensation or other benefits from the company(ies) covered in this report or any third party in connection with the Research Report. **No**
- The Research Analyst has served as an officer, director or employee of the company(ies) covered in the research report. **No**
- The Research Analyst or Ashika Stock Broking Limited has been engaged in Market making activity of the company(ies) covered in the research report. **No**

Disclaimer

This report is for the personal information of the authorized recipient and does not construe to be any investment, legal or taxation advice to you. Ashika Stock Broking Ltd. is not soliciting any action based upon it. This report is not for public distribution and has been furnished to you solely for your information and should not be reproduced or redistributed to any other person in any form. The report is based upon information that we consider reliable, but we do not represent that it is accurate or complete, and it should not be relied upon such. Ashika Stock Broking Ltd. or any of its affiliates or employees shall not be in anyway responsible for any loss or damage that may arise to any person from any inadvertent error in the information contained in this report. Ashika Stock Broking Ltd., or any of its affiliates or employees do not provide, at any time, any express or implied warranty of any kind, regarding any matter pertaining to this report, including without limitation the implied warranties of merchantability, fitness for a particular purpose, and non-infringement. The recipients of this report should rely on their own investigations.