

Technical Report

Closing Brief

Stocks of pharmaceutical companies and private sector banks led gains as key benchmark indices edged higher on the first trading session of the week. The market breadth indicating the overall health of the market was positive.

Technical Build up

- ❖ Bullish candle with decrease in volume
- ❖ Buy crossover in oscillators.
- ❖ Upper band of Bollinger exist at 8001
- ❖ Crucial moving average of 20/50 SMA are at 7791 and 7921
- ❖ 200 SMA trend deciding level exist at 8210

Outlook for the day

Indian equity market started on strong note and ended with gain of nearly a Percent. Fall in oil price and USDINR boosted the market sentiment. On the technical front Nifty formed a bullish candle with decrease in volume and trading volumes would continue to be tepid and are likely to remain so on the back of year-end holiday. Stiff resistance from the 50 day DMA at of 7930 still exist. After yesterday's closing Nifty confirmed of the previous week's Piercing candle Patten'. The Index is now gradually heading towards 7950 – 7970 levels. positive bias should prevail as long as 7730 is intact, a move below this level may result in petering out of the ongoing optimism. The momentum oscillator is still away from the overbought level of 65 indicating the upmove have some more headroom. On the F&O front rollover has been taking the front seat as far as India VIX is concerned it witnessed an uptick and is expected to rise as we close near to the expiry. On the option front out of the money call option saw unwinding of short while in the money put option of 7800 & 7900 saw long addition as an attempt to hedge for downside risk.

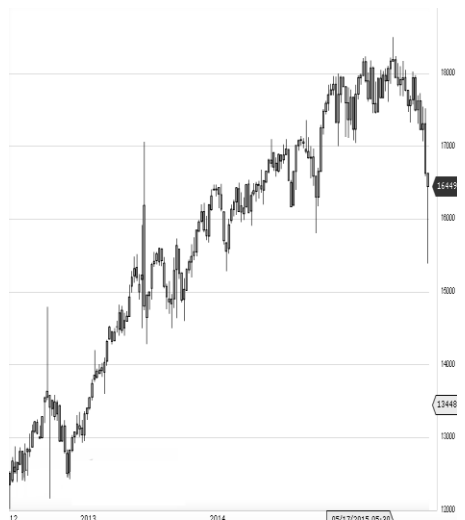
World Indices	LTP	Daily Ch(Pts)	Daily Ch(%)
Dow Jones	17528	-23	-0.14
Nasdaq	5040	-7	-0.15
S&P 500	2056	-4	-0.22
FTSE 100	6254	13	0.22
DAX	10653	-73	-0.69
Hang Seng	21952	32	0.15
Nikkei	18873	-	-
Sensex	26034	195	0.76
Nifty	7925	64	0.82

Commodity /Forex	LTP	Daily Ch(Pts)	Daily Ch(%)
Gold (\$/Oz)	1069.70	1.40	0.13
Silver (\$/Oz)	13.97	0.08	0.58
Copper(USD/lb.)	209.15	1.25	0.60
Brent Crude(USD/bbl)	36.65	0.03	0.08
USD/INR	66.19	-0.01	-0.02
USD/YEN	120.32	-0.08	-0.07
USD/EUR	1.0980	0.0012	0.11

Support/Resistance levels for Indian Equity Indices					
	S1	S2	CMP	R1	R2
Sensex	25785	25850	26034	26150	26250
Nifty	7900	7870	7925	7960	7990
Nifty (Fut)	7885	7855	7908	7945	7975

Pivot Level	
Sensex	25988
Nifty	7908

US: US market closed lower in light volume trade Monday, the start to the last trading week of the year, as a renewed slide in oil prices weighed. Technically DJIA is presently trading at the 5th leg through Elliot wave count with negative divergence in oscillators.



Increase in OI with Increase in Price (Long Buildup)					
Symbol	Prev OI	Curr OI	OI Chg (%)	Curr Pr.	Pr.Ch g (%)
INDUSIN					
D	7903	9186	16.2	956.25	1.10
BHARAT					
FORG	8311	9497	14.3	906	5.10
TCS	16997	19313	13.6	2447	0.40
M&MFI					
N	3960	4457	12.6	243.9	1.00
KOTAKB					
ANK	9978	11147	11.7	705.0	0.60

Increase in OI with Decrease in Price (Short Buildup)					
Symbol	Prev OI	Curr OI	OI Chg (%)	Curr Pr.	Pr.Ch g (%)
AMBUJA					
CEM	4307	4821	11.9	201.8	-1.0
M&M	7179	8025	11.8	1248.05	-1.1
HINDUN					
ILVR	5132	5617	9.5	862.8	-0.2
HINDZIN					
C	562	614	9.3	147.75	-0.9
BHEL	9891	10544	6.6	171.60	-1.0

Nifty declined by 0.82% with Nifty future added 17.6 lakh shares in open interest and stock future added 702.4 lakh shares in open interest.

- Nifty PCR increased to 0.85 from 0.82
- Total Nifty Calls added 4.3 lakh shares in open interest.
- Total Nifty Puts shaded 30.0 lakh shares in open interest.
- Maximum open interest (Nifty) in Calls for Oct. series is at 8000 and 7800 put.
- FII's sold net Rs.302.62(provisional), while DIIs bought net Rs.987.82 Cr in cash market.
- FII bought net Rs.1633.56 Cr. In F&O
- Securities in Ban Period: DLF, INDIACEM, JINDALSTEL, JISJALEQS, JPASSOCIAT, KSCL, UNITECH & WOCKPHARMA

Nifty Tracker

PARTICULARS	25/12/2015	24/12/2015	23/12/2015	22/12/2015
Spot	7925.15	7861.05	7865.95	7786.1
% Change in Spot	0.82%	-0.06%	1.03%	-0.62%
Nifty(FUT) Dec	7908.55	7871.75	7864	7785.1
Nifty(FUT) Dec Vol.	135213	81579	132290	134508
Nifty(FUT) Dec - OI	15098100	16400850	17115975	18430425
Nifty(FUT) Jan	7934.65	7902.15	7894.1	7816.75
Nifty(FUT) Jan Vol.	55283	20797	32034	14600
Nifty(FUT) Jan - OI	7081500	4108500	3483300	2215575

Trade Statistics for 25/12/2015

PARTICULARS	NO. OF CONTRACTS	TURNOVER (RS. CR.)	PUT CALL RATIO
NSE Index Futures	2,66,240	15167	-
NSE Stock Futures	9,34,226	47549	-
NSE Index Options	28,50,524	1,65,844.63	-
NSE Stock Options	2,52,860	13260	0.49
NSE F&O Total Turnover	43,03,850	241,820	0.98
NSE Cash Turnover	-	14249	-
BSE Cash Turnover	-	2609.55	-
Total Turnover	-	258679	-

FII Corner (F&O)

FII NET BUYING/SELLING & CHANGE IN OPEN INTEREST (Cr. Rupee)						
PARTICULARS	25/12/2015		24/12/2015		23/12/2015	
	Net Buying /Selling	Change In Open interest	Net Buying /Selling	Change In Open interest	Net Buying /Selling	Change In Open interest
Index Future	-90	516	354	379	556	-119
Index option	1199	989	-257	-56	-152	1272
Stock Future	610	1748	101	109	250	1142
Stock option	-86	85	-71	44	-34	-34
Total	1633	3338	127	476	620	2261

Market Open Interest

ADDITION/REDUCTION IN MARKET OPEN INTEREST					
Contracts	25/12/2015	24/12/2015	23/12/2015	22/12/2015	21/12/2015
Index Futures	1546	-76	138	-76	6
Index Options	2138	912	1591	231	773
Stock Futures	3375	415	2116	1028	2758
Stock Options	140	377	308	356	659
F&O Total	7200	1629	4153.41	1538.24	4195.95

Nifty Option Open Interest Statistics

NIFTY OPTIONS HIGHEST ADDITION IN OPEN INTEREST						
Expiry	Strike	Option Type	Settlement Price	Volume	Open Interest	Change In OI
31-Dec-15	7900	PE	31.35	294273	3833525	1563100
31-Dec-15	7800	PE	7.85	328409	5766475	712625
28-Jan-16	7800	PE	71	21722	1521225	612450
28-Jan-16	8100	CE	53.75	25995	2035200	561075
31-Dec-15	7950	CE	16	107235	2200425	405675
31-Dec-15	7950	PE	56.45	13206	574500	400575
28-Jan-16	8200	CE	30.5	18034	2466600	276975
31-Dec-15	8050	CE	2.7	33818	750075	262575
31-Mar-16	9000	CE	9.25	4613	733175	246225
28-Jan-16	7700	PE	45.95	14145	1041675	217050

NIFTY OPTIONS HIGHEST REDUCTION IN OPEN INTEREST						
Expiry	Strike	Option Type	Settlement Price	Volume	Open Interest	Change In OI
31-Dec-15	7900	CE	38.35	327468	4571100	-612225
31-Dec-15	7800	CE	112.85	103759	2957975	-395400
31-Dec-15	7850	CE	69.8	30694	1165125	-364275
31-Dec-15	7600	PE	1.6	66975	3520250	-264375
31-Dec-15	8500	CE	0.4	6457	3552375	-246675
31-Dec-15	7300	PE	0.65	10213	2357725	-211725
31-Dec-15	8500	PE	588.1	2930	984750	-198125
31-Dec-15	8000	PE	99.1	56698	3339975	-163750
31-Dec-15	8100	CE	1.45	71522	3195750	-156225
31-Dec-15	7700	PE	2.5	126539	4300375	-151925

Stock Option Open Interest Statistics

STOCK OPTIONS WITH HIGHEST ADDITION IN OPEN INTEREST							
Symbol	Expiry	Strike	Option Type	Settl. Price	Volume	Open Interest	Change in OI
TV18BRDCST	31-Dec-15	50	CE	0.3	683	5627000	1428000
TATASTEEL	31-Dec-15	260	CE	1.3	3546	2824000	914000
RCOM	31-Dec-15	90	CE	0.4	1013	9528000	896000
RCOM	31-Dec-15	87.5	CE	0.85	710	4072000	552000
TV18BRDCST	31-Dec-15	47.5	PE	0.85	187	1207000	510000
IDBI	31-Dec-15	92.5	CE	0.75	666	1752000	496000
TATASTEEL	31-Dec-15	270	CE	0.4	2329	3170000	486000
ADANIPOWER	31-Dec-15	32.5	CE	0.1	112	6120000	460000
GMRINFRA	28-Jan-16	20	CE	0.25	33	6084000	429000
NTPC	31-Dec-15	140	PE	0.35	247	576000	428000

STOCK OPTIONS WITH HIGHEST REDUCTION IN OPEN INTEREST							
Symbol	Expiry	Strike	Option Type	Settl. Price	Volume	Open Int.	Change in OI
GMRINFRA	31-Dec-15	15	PE	0.05	175	14079000	-1248000
ICICIBANK	31-Dec-15	260	CE	3.95	1628	3104200	-931600
JPASSOCIAT	31-Dec-15	10	CE	1.75	20	1776000	-816000
TATAMOTORS	31-Dec-15	390	CE	6.75	2436	952500	-660000
DLF	31-Dec-15	120	CE	0.55	275	8260000	-650000
TATASTEEL	31-Dec-15	250	PE	2.15	2489	2048000	-604000
TATASTEEL	31-Dec-15	260	PE	8.05	1418	800000	-584000
DLF	31-Dec-15	130	CE	0.15	122	4200000	-540000
UNITECH	31-Dec-15	7.5	CE	0.05	15	22407000	-462000
GMRINFRA	31-Dec-15	15	CE	1.2	93	9594000	-429000

Disclosure

- The Research Analysts and /or Ashika Stock Broking Limited do hereby certify that all the views expressed in this research report accurately reflect their views about the subject issuer(s) or securities. Moreover, they also certify the followings:-
- The Research Analyst or Ashika Stock Broking Limited or his/its Associates or his/its relative, has any financial interest in the subject company(ies) covered in this report. **No**
- The Research Analyst or Ashika Stock Broking Limited or his/its Associates or his/its relative, have actual/beneficial ownership of 1% or more in the subject company, at the end of the month immediately preceding the date of the publication of the research report. **No**
- The Research Analyst or Ashika Stock Broking Limited or his/its Associates or his/its relatives has any material conflict of interest at the time of publication of the research report. **No**
- The Research Analyst or Ashika Stock Broking Limited or his/its Associates have received compensation for investment banking or merchant banking or brokerage services or for product other than for investment banking or merchant banking or brokerage services from the companies covered in this report in the past 12 months. **No**
- The Research Analyst or Ashika Stock Broking Limited or his/its Associates have managed or co managed in the previous 12 months any private or public offering of securities for the company(ies) covered in this report. **No**
- The Research Analyst or Ashika Stock Broking Limited or his/its Associates have received any compensation or other benefits from the company(ies) covered in this report or any third party in connection with the Research Report. **No**
- The Research Analyst has served as an officer, director or employee of the company(ies) covered in the research report. **No**
- The Research Analyst or Ashika Stock Broking Limited has been engaged in Market making activity of the company(ies) covered in the research report. **No**

Disclaimer

This report is for the personal information of the authorized recipient and does not construe to be any investment, legal or taxation advice to you. Ashika Stock Broking Ltd. is not soliciting any action based upon it. This report is not for public distribution and has been furnished to you solely for your information and should not be reproduced or redistributed to any other person in any form. The report is based upon information that we consider reliable, but we do not represent that it is accurate or complete, and it should not be relied upon such. Ashika Stock Broking Ltd. or any of its affiliates or employees shall not be in anyway responsible for any loss or damage that may arise to any person from any inadvertent error in the information contained in this report. Ashika Stock Broking Ltd., or any of its affiliates or employees do not provide, at any time, any express or implied warranty of any kind, regarding any matter pertaining to this report, including without limitation the implied warranties of merchantability, fitness for a particular purpose, and non-infringement. The recipients of this report should rely on their own investigations.