

Technical Report

Closing Brief

Key benchmark indices provisionally settled with small gains in what was a volatile trading session. The market breadth indicating the overall health of the market was negative.

Technical Build up

- ❖ Doji candle with increase in volume
- ❖ Buy crossover in oscillators.
- ❖ Upper band of Bollinger exist at 8000
- ❖ Crucial moving average of 20/50 SMA are at 7790 and 7917
- ❖ 200 SMA trend deciding level exist at 8205

Outlook for the day

Indian equity market remained unchanged in absence of any positive cues and traded volatile in a narrow range. On the technical front Nifty formed an indecisive doji candle with marginal increase in volume and trading volumes would continue to be tepid and are likely to remain so on the back of year-end holiday. Stiff resistance from the 50 day DMA at of 7930 still exist. After yesterday's closing Nifty confirmed of the previous week's Piercing candle Pattern'. The Index is now gradually heading towards 7950 – 7970 levels. positive bias should prevail as long as 7730 is intact, a move below this level may result in petering out of the ongoing optimism. The momentum oscillator is still away from the overbought level of 65 indicating the upmove have some more headroom. On the F&O front rollover has been taking the front seat with Nifty rollover standing tall at 48% and as far as India VIX is concerned it decreased marginally the previous day. On the option front ATM strike price put option had been witnessing long addition while higher strike price call option of 8000 & 8100 saw writing activity while unwinding of long in ATM call were also seen. Hence considering the upcoming F&O expiry, volatility will tend to remain high in the next two sessions



Increase in OI with Increase in Price (Long Buildup)

Symbol	Prev OI	Curr OI	OI Chg (%)	Curr Pr.	Pr.Ch g (%)
ZEEL	4845	5573	15	415.4	1.00
EICHER					
MOT	7233	8282	14.5	16671	0.60
FEDERA					
LBNK	1999	2262	13.2	56.85	0.20
GODREJI					
ND	1089	1229	12.9	387.2	1.10
HDFC	22153	24589	11	1237.4	0.90

Increase in OI with Decrease in Price (Short Buildup)

Symbol	Prev OI	Curr OI	OI Chg (%)	Curr Pr.	Pr.Ch g (%)
SRTRAN					
SFIN	3946	4795	21.5	848	-0.6
SOUTHB					
ANK	932	1091	17.1	19.6	-0.3
JUBLFO					
OD	3391	3801	12.1	1508	-0.9
CIPLA	6710	7485	11.6	653.3	-0.5
UPL	5301	5901	11.3	432.9	-0.3

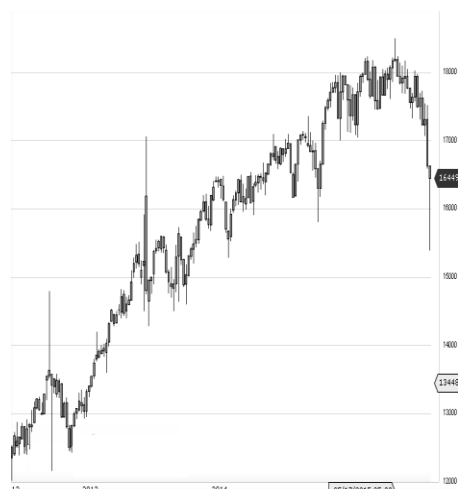
World Indices	LTP	Daily Ch(Pts)	Daily Ch(%)
Dow Jones	17720	192	1.10
Nasdaq	5107	66	1.33
S&P 500	2078	21	1.06
FTSE 100	6314	59	0.96
DAX	10860	206	1.94
Hang Seng	21974	-24	-0.11
Nikkei	19088	105	0.56
Sensex	26079	45	0.17
Nifty	7928	3	0.05

Commodity /Forex	LTP	Daily Ch(Pts)	Daily Ch(%)
Gold (\$/Oz)	1069.30	1.30	0.12
Silver (\$/Oz)	13.96	0.03	0.23
Copper(USD/lb.)	213.90	0.25	0.12
Brent Crude(USD/bbl)	37.31	-0.48	-1.27
USD/INR	66.39	0.19	0.30
USD/YEN	120.50	0.04	0.03
USD/EUR	1.0922	0.0002	0.02

Support/Resistance levels for Indian Equity Indices					
	S1	S2	CMP	R1	R2
Sensex	25985	25885	26079	26150	26285
Nifty	7900	7870	7928	7950	7990
Nifty (Fut)	7905	7875	7932	7955	7995

Pivot Level	
Sensex	26069
Nifty	7924

US: US market closed more than 1 percent higher in light volume trade Tuesday, as the tech sector led broad gains amid some stabilization in oil and commodity prices. Technically DJIA is presently trading at the 5th leg through Elliot wave count with negative divergence in oscillators.



Nifty gained by 0.05% with Nifty future added 20.8 lakh shares in open interest and stock future added 539.1 lakh shares in open interest.

- Nifty PCR increased to 0.88 from 0.85
- Total Nifty Calls shaded 11.3 lakh shares in open interest.
- Total Nifty Puts added 11.4 lakh shares in open interest.
- Maximum open interest (Nifty) in Calls for Oct. series is at 8000 and 7500 put.
- FII's bought net Rs.8.49(provisional), while DIIs bought net Rs.6.44 Cr in cash market.
- FII bought net Rs.184.12 Cr. In F&O
- Securities in Ban Period: DLF, INDIACEM, JINDALSTEL, JISJALEQS, JPASSOCIAT, KSCL, UNITECH & WOCKPHARMA

Nifty Tracker

PARTICULARS	29/12/2015	28/12/2015	24/12/2015	23/12/2015
Spot	7928.95	7925.15	7861.05	7865.95
% Change in Spot	0.05%	0.82%	-0.06%	1.03%
Nifty(FUT) Dec	7932.05	7908.55	7871.75	7864
Nifty(FUT) Dec Vol.	148627	135213	81579	132290
Nifty(FUT) Dec - OI	12690450	15098100	16400850	17115975
Nifty(FUT) Jan	7955.85	7934.65	7902.15	7894.1
Nifty(FUT) Jan Vol.	90283	55283	20797	32034
Nifty(FUT) Jan - OI	11513850	7081500	4108500	3483300

Trade Statistics for 29/12/2015

PARTICULARS	NO. OF CONTRACTS	TURNOVER (RS. CR.)	PUT CALL RATIO
NSE Index Futures	3,67,353	20762	-
NSE Stock Futures	10,62,032	54657	-
NSE Index Options	37,14,261	2,17,443.54	-
NSE Stock Options	2,72,494	14610	0.46
NSE F&O Total Turnover	54,16,140	307,472	0.94
NSE Cash Turnover	-	14472	-
BSE Cash Turnover	-	2540.61	-
Total Turnover	-	324485	-

FII Corner (F&O)

FII NET BUYING/SELLING & CHANGE IN OPEN INTEREST (Cr. Rupee)						
PARTICULARS	29/12/2015		28/12/2015		24/12/2015	
	Net Buying /Selling	Change In Open interest	Net Buying /Selling	Change In Open interest	Net Buying /Selling	Change In Open interest
Index Future	699	3229	-90	516	354	379
Index option	-461	145	1199	989	-257	-56
Stock Future	3	878	610	1748	101	109
Stock option	-57	14	-86	85	-71	44
Total	184	4266	1633	3338	127	476

Market Open Interest

ADDITION/REDUCTION IN MARKET OPEN INTEREST					
Contracts	29/12/2015	28/12/2015	24/12/2015	23/12/2015	22/12/2015
Index Futures	2232	1546	-76	138	-76
Index Options	804	2138	912	1591	231
Stock Futures	263	3375	415	2116	1028
Stock Options	149	140	377	308	356
F&O Total	3448	7200	1628.53	4153.41	1538.24

Nifty Option Open Interest Statistics

NIFTY OPTIONS HIGHEST ADDITION IN OPEN INTEREST						
Expiry	Strike	Option Type	Settlement Price	Volume	Open Interest	Change In OI
28-Jan-16	7800	PE	64.1	23847	2148075	626850
31-Dec-15	7950	PE	34.75	68255	1120275	545775
31-Dec-15	7900	PE	15	456483	4342850	509325
31-Dec-15	7850	PE	5.5	203766	2289000	440025
31-Dec-15	8000	CE	6.35	461340	8123400	412200
31-Dec-15	8050	CE	1.55	102439	1123050	372975
28-Jan-16	7900	PE	94.6	18987	1008450	327675
28-Jan-16	8200	PE	265.6	4823	513750	275175
28-Jan-16	8100	CE	56.45	28732	2283450	248250
31-Mar-16	9000	PE	962.2	3049	377850	226800

NIFTY OPTIONS HIGHEST REDUCTION IN OPEN INTEREST						
Expiry	Strike	Option Type	Settlement Price	Volume	Open Interest	Change In OI
31-Dec-15	7900	CE	44.25	377034	3771625	-799475
31-Dec-15	7800	PE	2.55	369027	4988125	-778350
31-Dec-15	7800	CE	130.85	67221	2342525	-615450
31-Dec-15	7850	CE	84.25	32917	737475	-427650
31-Dec-15	7600	PE	0.8	36787	3153650	-366600
31-Dec-15	7750	PE	1.25	50770	841425	-305175
31-Dec-15	9000	CE	0.4	14025	2909150	-282275
31-Dec-15	7700	PE	1.1	107752	4025975	-274400
31-Dec-15	8500	PE	564.05	4789	720450	-264300
31-Dec-15	7700	CE	231.95	10694	1513575	-213675

Stock Option Open Interest Statistics

STOCK OPTIONS WITH HIGHEST ADDITION IN OPEN INTEREST							
Symbol	Expiry	Strike	Option Type	Settl. Price	Volume	Open Interest	Change in OI
ADANIPOWER	28-Jan-16	27.5	PE	0.35	39	1060000	620000
GMRINFRA	28-Jan-16	17.5	CE	0.65	39	6162000	585000
RPOWER	28-Jan-16	60	CE	1.45	116	1476000	576000
NTPC	31-Dec-15	142.5	PE	0.5	225	664000	572000
RCOM	28-Jan-16	90	CE	4.45	177	1600000	568000
IFCI	28-Jan-16	25	CE	2.5	33	660000	560000
TATAMOTORS	31-Dec-15	400	CE	1.3	2430	2611500	550500
VEDL	31-Dec-15	90	PE	0.45	571	1864000	540000
RELINFRA	31-Dec-15	500	PE	3.3	2640	713700	525200
RCOM	31-Dec-15	92.5	CE	0.2	510	2880000	520000

STOCK OPTIONS WITH HIGHEST REDUCTION IN OPEN INTEREST							
Symbol	Expiry	Strike	Option Type	Settl. Price	Volume	Open Int.	Change in OI
RCOM	31-Dec-15	85	CE	3.1	1248	6936000	-1568000
TV18BRDCST	31-Dec-15	52.5	CE	0.05	136	4335000	-1122000
RCOM	31-Dec-15	90	CE	0.55	3244	8648000	-880000
RCOM	31-Dec-15	80	PE	0.05	215	3128000	-800000
ASHOKLEY	31-Dec-15	92.5	CE	0.2	866	4389000	-679000
SBIN	31-Dec-15	230	CE	1.45	3602	3530000	-624000
SBIN	31-Dec-15	230	PE	2.65	919	1912000	-622000
ASHOKLEY	31-Dec-15	90	CE	0.75	1164	7623000	-609000
RPOWER	31-Dec-15	52.5	PE	0.1	197	996000	-564000
RELINFRA	31-Dec-15	500	CE	12	6348	1155700	-555100

Disclosure

- The Research Analysts and /or Ashika Stock Broking Limited do hereby certify that all the views expressed in this research report accurately reflect their views about the subject issuer(s) or securities. Moreover, they also certify the followings:-
- The Research Analyst or Ashika Stock Broking Limited or his/its Associates or his/its relative, has any financial interest in the subject company(ies) covered in this report. **No**
- The Research Analyst or Ashika Stock Broking Limited or his/its Associates or his/its relative, have actual/beneficial ownership of 1% or more in the subject company, at the end of the month immediately preceding the date of the publication of the research report. **No**
- The Research Analyst or Ashika Stock Broking Limited or his/its Associates or his/its relatives has any material conflict of interest at the time of publication of the research report. **No**
- The Research Analyst or Ashika Stock Broking Limited or his/its Associates have received compensation for investment banking or merchant banking or brokerage services or for product other than for investment banking or merchant banking or brokerage services from the companies covered in this report in the past 12 months. **No**
- The Research Analyst or Ashika Stock Broking Limited or his/its Associates have managed or co managed in the previous 12 months any private or public offering of securities for the company(ies) covered in this report. **No**
- The Research Analyst or Ashika Stock Broking Limited or his/its Associates have received any compensation or other benefits from the company(ies) covered in this report or any third party in connection with the Research Report. **No**
- The Research Analyst has served as an officer, director or employee of the company(ies) covered in the research report. **No**
- The Research Analyst or Ashika Stock Broking Limited has been engaged in Market making activity of the company(ies) covered in the research report. **No**

Disclaimer

This report is for the personal information of the authorized recipient and does not construe to be any investment, legal or taxation advice to you. Ashika Stock Broking Ltd. is not soliciting any action based upon it. This report is not for public distribution and has been furnished to you solely for your information and should not be reproduced or redistributed to any other person in any form. The report is based upon information that we consider reliable, but we do not represent that it is accurate or complete, and it should not be relied upon such. Ashika Stock Broking Ltd. or any of its affiliates or employees shall not be in anyway responsible for any loss or damage that may arise to any person from any inadvertent error in the information contained in this report. Ashika Stock Broking Ltd., or any of its affiliates or employees do not provide, at any time, any express or implied warranty of any kind, regarding any matter pertaining to this report, including without limitation the implied warranties of merchantability, fitness for a particular purpose, and non-infringement. The recipients of this report should rely on their own investigations.