

## Technical Report

### Closing Brief

Key benchmark indices declined as weakness in European stocks weighed on sentiment. After hovering near the flat line for the most part of the session, key indices hit fresh intraday low in late trade after sliding into the red in mid-afternoon trade.

### Technical Build up

- ❖ Bearish candle with increase in volume
- ❖ Buy crossover in oscillators.
- ❖ Upper band of Bollinger exist at 7989
- ❖ Crucial moving average of 20/50 SMA are at 7787 and 7913
- ❖ 200 SMA trend deciding level exist at 8201

### Outlook for the day

Indian equity market slipped in red in late trade on Wednesday and lost close to half a percent. Participants preferred to book some profit ahead of F&O expiry also traders took note of latest statement by World Bank chief economist Kaushik Basu that the Indian economy is expected to grow at 7 to 7.5 percent in 2016. On the technical front Nifty formed bearish candle with increase in volume Stiff resistance from the 50 day DMA at of 7930 still exist. The Index is now gradually heading towards 7950 – 7970 levels. positive bias should prevail as long as 7730 is intact, a move below this level may result in petering out of the ongoing optimism. The momentum oscillator is still away from the overbought level of 65 indicating the upmove have some headroom. On the F&O front rollover was to the tune of 52% compared to 3-months average of 67% and as far as India VIX is concerned it increased marginally the previous day. On the option front higher strike price call option was writing activity in 8000 & 8200 while unwinding of shorts were seen in lower strike price put option of 7700 & 7800. Overall the data depicts a negative bias in the market.

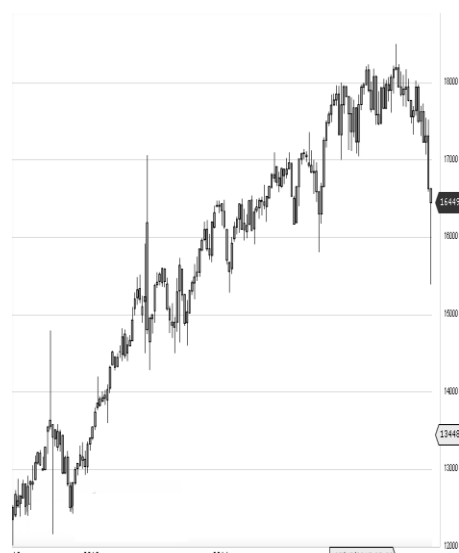
World Indices	LTP	Daily Ch(Pts)	Daily Ch(%)
Dow Jones	17603	-117	-0.66
Nasdaq	5065	-42	-0.82
S&P 500	2063	-15	-0.72
FTSE 100	6274	-40	-0.64
DAX	10743	-117	-1.08
Hang Seng	21946	64	0.29
Nikkei	19033	51	0.27
Sensex	25960	-119	-0.46
Nifty	7896	-32	-0.41

Commodity /Forex	LTP	Daily Ch(Pts)	Daily Ch(%)
Gold (\$/Oz)	1060.60	0.80	0.08
Silver (\$/Oz)	13.86	0.01	0.09
Copper(USD/lb.)	214.50	-0.15	-0.07
Brent Crude(USD/bbl)	36.65	0.19	0.52
USD/INR	66.38	-0.0075	-0.01
USD/YEN	120.45	-0.07	-0.06
USD/EUR	1.0927	-0.0006	-0.05

Support/Resistance levels for Indian Equity Indices					
	S1	S2	CMP	R1	R2
Sensex	25870	25775	25960	26075	26205
Nifty	7870	7840	7896	7930	7970
Nifty (Fut)	7875	7845	7901	7935	7975

Pivot Level	
Sensex	
Nifty	7910

**US:** US market closed lower Wednesday in low volume trade as a decline in oil prices weighed. Technically DJIA is presently trading at the 5th leg through Elliot wave count with negative divergence in oscillators.



#### Increase in OI with Increase in Price (Long Buildup)

Symbol	Prev OI	Curr OI	OI Chg (%)	Curr Pr.	Pr.Ch g (%)
INFRATE L	340	725	113.2	429	2.60
AMARAJ ABAT	529	1055	99.4	870.	0.10
CASTRO LIND	603	1126	86.7	446.50	0.90
SKSMIC RO	2920	5039	72.6	498.05	0.30
TECHM	3590	5970	66.3	525.75	0.80

#### Increase in OI with Decrease in Price (Short Buildup)

Symbol	Prev OI	Curr OI	OI Chg (%)	Curr Pr.	Pr.Ch g (%)
IBULHS GFIN	3911	9341	138.8	732.3	-0.2
CEATLT D	861	1713	99	1054.8	-0.4
OFSS	360	702	95	3766.20	-0.6
PETRON ET	857	1600	86.7	246.55	-0.2
MINDTR EE	331	588	77.6	1440.6	-1.9

# Derivative Report

Technical &amp; Derivative Report

Nifty declined by 0.41% with Nifty future added 4.0 lakh shares in open interest and stock future shaded 212.0 lakh shares in open interest.

- Nifty PCR decreased to 0.86 from 0.88
- Total Nifty Calls added 21.3 lakh shares in open interest.
- Total Nifty Puts added 5.2 lakh shares in open interest.
- Maximum open interest (Nifty) in Calls for Oct. series is at 8000 and 7500 put.
- FII's bought net Rs.152.2(provisional), while DIIs bought net Rs.74.41 Cr in cash market.
- FII bought net Rs.231.15 Cr. In F&O
- Securities in Ban Period: JPASSOCIAT, UNITECH & WOCKPHARMA

## Nifty Tracker

PARTICULARS	30/12/2015	29/12/2015	28/12/2015	24/12/2015
Spot	7896.25	7928.95	7925.15	7861.05
% Change in Spot	-0.41%	0.05%	0.82%	-0.06%
Nifty(FUT) Dec	7901.9	7932.05	7908.55	7871.75
Nifty(FUT) Dec Vol.	118301	148627	135213	81579
Nifty(FUT) Dec - OI	10155600	12690450	15098100	16400850
Nifty(FUT) Jan	7925.05	7955.85	7934.65	7902.15
Nifty(FUT) Jan Vol.	70238	90283	55283	20797
Nifty(FUT) Jan - OI	14327550	11513850	7081500	4108500

## Trade Statistics for 30/12/2015

PARTICULARS	NO. OF CONTRACTS	TURNOVER (RS. CR.)	PUT CALL RATIO
NSE Index Futures	2,76,041	15690	-
NSE Stock Futures	10,72,452	54819	-
NSE Index Options	40,99,069	2,39,629.07	-
NSE Stock Options	2,73,897	14661	0.45
NSE F&O Total Turnover	57,21,459	324,799	0.86
NSE Cash Turnover	-	14636	-
BSE Cash Turnover	-	2401.24	-
Total Turnover	-	341836	-

## FII Corner (F&O)

FII NET BUYING/SELLING & CHANGE IN OPEN INTEREST (Cr. Rupee)						
PARTICULARS	30/12/2015		29/12/2015		28/12/2015	
	Net Buying /Selling	Change In Open interest	Net Buying /Selling	Change In Open interest	Net Buying /Selling	Change In Open interest
Index Future	330	1677	699	3229	-90	516
Index option	-227	1276	-461	145	1199	989
Stock Future	-251	1254	3	878	610	1748
Stock option	-84	-66	-57	14	-86	85
Total	-232	4141	184	4266	1633	3338

## Market Open Interest

ADDITION/REDUCTION IN MARKET OPEN INTEREST					
Contracts	30/12/2015	29/12/2015	28/12/2015	24/12/2015	23/12/2015
Index Futures	311	2232	1546	-76	138
Index Options	-935	804	2138	912	1591
Stock Futures	2385	263	3375	415	2116
Stock Options	114	149	140	377	308
F&O Total	1875	3448	7199.67	1628.53	4153.41

## Nifty Option Open Interest Statistics

NIFTY OPTIONS HIGHEST ADDITION IN OPEN INTEREST						
Expiry	Strike	Option Type	Settlement Price	Volume	Open Interest	Change In OI
31-Dec-15	7950	CE	4.65	347973	3556050	1519350
31-Dec-15	7850	PE	3.8	243963	3378525	1089525
31-Dec-15	8000	CE	1.25	644413	8649375	525975
28-Jan-16	8200	CE	25.55	27385	3092925	493425
28-Jan-16	7900	PE	106.15	25948	1371525	363075
28-Jan-16	8000	CE	82.4	31387	2502900	356325
28-Jan-16	8100	CE	47.45	22618	2623575	340125
28-Jan-16	7800	PE	70.35	27022	2469450	321375
28-Jan-16	7700	PE	45.3	22385	1418025	268575
28-Jan-16	8300	PE	380.3	4259	558150	239175

NIFTY OPTIONS HIGHEST REDUCTION IN OPEN INTEREST						
Expiry	Strike	Option Type	Settlement Price	Volume	Open Interest	Change In OI
31-Dec-15	7900	PE	18.45	511403	3834100	-508750
31-Dec-15	7700	PE	0.7	97004	3521225	-504750
31-Dec-15	7800	PE	1.65	306530	4497275	-490850
31-Dec-15	8000	PE	98.3	108431	2926025	-429775
31-Dec-15	7800	CE	102.15	57908	1946300	-396225
31-Dec-15	8050	CE	0.4	128444	740925	-382125
31-Dec-15	7500	PE	0.3	12966	4656475	-362300
31-Dec-15	7500	CE	399.7	7155	215125	-341200
31-Dec-15	7700	CE	202.35	10424	1220850	-292725
31-Dec-15	7600	CE	302.75	6312	455775	-237000

## Stock Option Open Interest Statistics

STOCK OPTIONS WITH HIGHEST ADDITION IN OPEN INTEREST							
Symbol	Expiry	Strike	Option Type	Settl. Price	Volume	Open Interest	Change in OI
IFCI	31-Dec-15	30	CE	0.05	419	12460000	1420000
IDBI	31-Dec-15	92.5	CE	0.4	981	3192000	1224000
RCOM	31-Dec-15	90	CE	0.4	3465	9864000	1216000
RCOM	31-Dec-15	87.5	PE	0.55	1101	2728000	1152000
PNB	31-Dec-15	120	CE	0.45	815	2240000	1056000
IDBI	31-Dec-15	95	CE	0.15	550	3680000	840000
ADANIPOWER	31-Dec-15	30	PE	0.05	183	2460000	820000
RPOWER	28-Jan-16	57.5	CE	2.1	100	1068000	792000
RCOM	31-Dec-15	85	PE	0.2	1292	5328000	776000
IFCI	28-Jan-16	30	CE	0.6	125	2180000	760000

STOCK OPTIONS WITH HIGHEST REDUCTION IN OPEN INTEREST							
Symbol	Expiry	Strike	Option Type	Settl. Price	Volume	Open Int.	Change in OI
RCOM	31-Dec-15	85	CE	3.55	761	5016000	-1920000
RPOWER	31-Dec-15	55	CE	0.9	357	3720000	-1032000
NHPC	31-Dec-15	20	CE	0.15	72	2781000	-972000
GMRINFRA	31-Dec-15	17.5	CE	0.05	149	32604000	-936000
NHPC	31-Dec-15	20	PE	0.1	55	1053000	-891000
DLF	31-Dec-15	120	CE	0.2	193	6900000	-840000
ADANIPOWER	31-Dec-15	35	CE	0.05	175	2740000	-700000
RPOWER	31-Dec-15	52.5	CE	2.95	94	780000	-564000
BHEL	31-Dec-15	180	CE	0.2	585	2460000	-562000
ASHOKLEY	31-Dec-15	90	CE	0.4	1413	7091000	-532000

**Disclosure**

- The Research Analysts and /or Ashika Stock Broking Limited do hereby certify that all the views expressed in this research report accurately reflect their views about the subject issuer(s) or securities. Moreover, they also certify the followings:-
- The Research Analyst or Ashika Stock Broking Limited or his/its Associates or his/its relative, has any financial interest in the subject company(ies) covered in this report. **No**
- The Research Analyst or Ashika Stock Broking Limited or his/its Associates or his/its relative, have actual/beneficial ownership of 1% or more in the subject company, at the end of the month immediately preceding the date of the publication of the research report. **No**
- The Research Analyst or Ashika Stock Broking Limited or his/its Associates or his/its relatives has any material conflict of interest at the time of publication of the research report. **No**
- The Research Analyst or Ashika Stock Broking Limited or his/its Associates have received compensation for investment banking or merchant banking or brokerage services or for product other than for investment banking or merchant banking or brokerage services from the companies covered in this report in the past 12 months. **No**
- The Research Analyst or Ashika Stock Broking Limited or his/its Associates have managed or co managed in the previous 12 months any private or public offering of securities for the company(ies) covered in this report. **No**
- The Research Analyst or Ashika Stock Broking Limited or his/its Associates have received any compensation or other benefits from the company(ies) covered in this report or any third party in connection with the Research Report. **No**
- The Research Analyst has served as an officer, director or employee of the company(ies) covered in the research report. **No**
- The Research Analyst or Ashika Stock Broking Limited has been engaged in Market making activity of the company(ies) covered in the research report. **No**

**Disclaimer**

This report is for the personal information of the authorized recipient and does not construe to be any investment, legal or taxation advice to you. Ashika Stock Broking Ltd. is not soliciting any action based upon it. This report is not for public distribution and has been furnished to you solely for your information and should not be reproduced or redistributed to any other person in any form. The report is based upon information that we consider reliable, but we do not represent that it is accurate or complete, and it should not be relied upon such. Ashika Stock Broking Ltd. or any of its affiliates or employees shall not be in anyway responsible for any loss or damage that may arise to any person from any inadvertent error in the information contained in this report. Ashika Stock Broking Ltd., or any of its affiliates or employees do not provide, at any time, any express or implied warranty of any kind, regarding any matter pertaining to this report, including without limitation the implied warranties of merchantability, fitness for a particular purpose, and non-infringement. The recipients of this report should rely on their own investigations.