

# Technical Report

## Closing Brief

A sharp selloff and trading halt in stock markets in mainland China rattled global stocks and Indian equity markets were no exception. The Sensex provisionally settled below the psychological 26,000 mark after falling below that level at the onset of the trading session.

## Technical Build up

- ❖ Bearish candle with increase in volume
- ❖ Sell crossover in oscillators.
- ❖ Upper band of Bollinger exist at 8009
- ❖ Crucial moving average of 20/50 SMA are at 7794 and 7893
- ❖ 200 SMA trend deciding level exist at 8188

## Outlook for the day

Indian equity market tanked over two percent on Monday mainly on the global worries. Sentiments were weak from the beginning due to sharp cut in the Chinese equity markets on weaker than expected manufacturing data and mounting tension between Saudi Arabia and Iran. On the technical front Nifty formed a strong bearish Marubazu candle with increase in volume. Stiff resistance from the 50 day DMA at of 7930 seems to be acting as crucial important resistance now while positive bias should prevail as long as 7730 is intact, a move below this level may result in petering out of the ongoing optimism. On the F&O front rise in OI followed by decrease in price indicates of short buildup in the market. While India VIX too witnessed a big leap towards 17. On the option front higher strike price call option of 8000 & 8420 witnessed short build up while ATM strike price put option of 7700 & 7600 witnessed long addition.

World Indices	LTP	Daily Ch(Pts)	Daily Ch(%)
Dow Jones	17148	-276	-1.58
Nasdaq	4903	-104	-2.08
S&P 500	2012	-31	-1.53
FTSE 100	6093	-148	-2.39
DAX	10283	-459	-4.28
Hang Seng	21352	25	0.12
Nikkei	18502	51	0.28
Sensex	25623	-537	-2.05
Nifty	7791	-171	-2.16

Commodity /Forex	LTP	Daily Ch(Pts)	Daily Ch(%)
Gold (\$/Oz)	1074.70	-0.50	-0.05
Silver (\$/Oz)	13.91	0.06	0.46
Copper(USD/lb.)	207.85	-0.10	-0.05
Brent Crude(USD/bbl)	37.32	0.10	0.27
USD/INR	66.61	0.47	0.72
USD/YEN	119.57	0.13	0.11
USD/EUR	1.0825	-0.0006	-0.06

Support/Resistance levels for Indian Equity Indices					
	S1	S2	CMP	R1	R2
Sensex	25420	25250	25623	25785	25950
Nifty	7730	7680	7791	7840	7890
Nifty (Fut)	7750	7700	7809	7860	7910

Pivot Level	
Sensex	25778
Nifty	7836

**US:** US market closed lower Monday, the first day of trade of the year, weighed by renewed concerns of global economic slowdown and increased tensions in the Middle East. An overnight drop in Chinese stocks that triggered a circuit breaker under a new rule also pressured sentiment. Technically DJIA is presently trading at the 5th leg through Elliot wave count with negative divergence in oscillators.

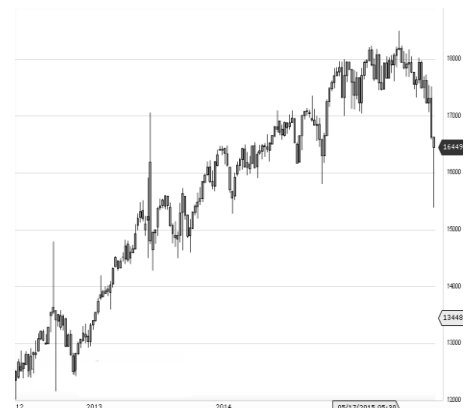


### Increase in OI with Increase in Price (Long Buildup)

Symbol	Prev OI	Curr OI	OI Chg (%)	Curr Pr.	Pr.Chg (%)
IRB	2700	3435	27.2	259.3	5.2
RELI.NFR.A	7121	7939	11.5	601	1.3
INFRA.L	1513	1612	6.5	431.5	0.7
DABUR	1489	1580	6.1	277.6	0
JISLJALE					
QS	5470	5786	5.8	74.65	4.5

### Increase in OI with Decrease in Price (Short Buildup)

Symbol	Prev OI	Curr OI	OI Chg (%)	Curr Pr.	Pr.Chg (%)
ULTRAC.EMCO	4679	5726	22.4	2750	[2.8]
HEXAW.ARE	1645	1878	14.2	240.25	[1.3]
IOB	689	774	12.3	30.4	[3.3]
HINDALCO	8218	9016	9.7	81.3	[4.7]
TCS	15011	16469	9.7	2383	[1.8]



# Derivative Report

Technical & Derivative Report

Nifty declined by 2.16% with Nifty future added 8.8 lakh shares in open interest and stock future added 410.8 Lakh shares in open interest.

- Nifty PCR increased to 0.85 from 0.76.
- Total Nifty Calls added 56.4 lakh shares in open interest.
- Total Nifty Puts added 93.2 lakh shares in open interest.
- Maximum open interest (Nifty) in Calls for Jan series is at 8200 and 7500 put.
- FII's sold net Rs.667.15 (provisional), while DIIs sold net Rs.222.79 Cr in cash market.
- FII bought net Rs. 3851.86 Cr in F&O
- Securities in Ban Period: NIL

## Nifty Tracker

PARTICULARS	04/01/2016	01/01/2016	31/12/2015	30/12/2015
Spot	7791.3	7963.2	7946.35	7896.25
% Change in Spot	-2.16%	0.21%	0.63%	-0.41%
Nifty(FUT) Jan	7809.8	7982	7952.05	7925.05
Nifty(FUT) Jan Vol.	217442	78099	121751	70238
Nifty(FUT) Jan - OI	20242200	19437675	18977400	14327550
Nifty(FUT) Feb	7832.15	8001.1	7972.45	0
Nifty(FUT) Feb Vol.	7026	2382	2321	0
Nifty(FUT) Feb - OI	602400	576075	555900	0

## Trade Statistics for 04/01/2016

PARTICULARS	NO. OF CONTRACTS	TURNOVER (RS. CR.)	PUT CALL RATIO
NSE Index Futures	3,48,267	19468	-
NSE Stock Futures	5,83,149	31383	-
NSE Index Options	29,23,916	1,70,977.25	-
NSE Stock Options	2,87,463	16059	0.55
NSE F&O Total Turnover	41,42,799	237,887	0.95
NSE Cash Turnover	-	17172	-
BSE Cash Turnover	-	3363.75	-
Total Turnover	-	258423	-

## FII Corner (F&O)

FII NET BUYING/SELLING & CHANGE IN OPEN INTEREST (Cr. Rupee)						
PARTICULARS	04/01/2016		01/01/2016		31/12/2015	
	Net Buying /Selling	Change In Open interest	Net Buying /Selling	Change In Open interest	Net Buying /Selling	Change In Open interest
Index Future	-40	483	-75	380	-630	-5691
Index option	4125	8927	566	1864	2469	-41552
Stock Future	-259	-749	-219	609	-197	-9214
Stock option	25	1009	73	561	105	-4224
Total	3851	9670	345	3414	1747	-60682

## Market Open Interest

ADDITION/REDUCTION IN MARKET OPEN INTEREST					
Contracts	04/01/2016	01/01/2016	31/12/2015	30/12/2015	29/12/2015
Index Futures	837	-5825	912	311	2232
Index Options	-436	-12062	2386	-935	804
Stock Futures	13474	-75442	11154	2385	263
Stock Options	2646	-15418	1191	114	149
F&O Total	16521	-108747	15642.16	1875.26	3447.61

## Nifty Option Open Interest Statistics

NIFTY OPTIONS HIGHEST ADDITION IN OPEN INTEREST						
Expiry	Strike	Option Type	Settlement Price	Volume	Open Interest	Change In OI
28-Jan-16	7500	PE	38.95	145682	4633275	1778700
28-Jan-16	7600	PE	58.85	160633	2853825	1354875
28-Jan-16	7700	PE	86.6	212072	3691125	1330275
28-Jan-16	8200	CE	14.9	185104	5860050	1153875
28-Jan-16	7800	CE	131.85	78161	2100450	1050900
28-Jan-16	7300	PE	17.75	51356	2181900	983775
28-Jan-16	8000	CE	48.65	294076	4246575	875100
28-Jan-16	7800	PE	124.45	243643	3953400	823275
28-Jan-16	7900	CE	83.95	202694	2460450	626550
28-Jan-16	8100	CE	26.85	200127	4309875	558750

NIFTY OPTIONS HIGHEST REDUCTION IN OPEN INTEREST						
Expiry	Strike	Option Type	Settlement Price	Volume	Open Interest	Change In OI
28-Jan-16	7900	PE	173.2	163668	2538075	-375000
28-Jan-16	8000	PE	235.9	53445	1520700	-216000
25-Feb-16	8300	CE	26.75	9087	625500	-147975
28-Jan-16	8300	CE	8	90491	2603775	-115800
28-Jan-16	7950	PE	203	3945	93825	-83550
25-Feb-16	8500	CE	9.55	8005	1269300	-74925
28-Jan-16	8100	PE	313.3	9500	605400	-61500
25-Feb-16	8600	CE	5.7	2218	364950	-23250
28-Jan-16	9500	CE	0.45	1000	37050	-20700
28-Jan-16	8700	PE	882.05	427	75525	-15300

## Stock Option Open Interest Statistics

STOCK OPTIONS WITH HIGHEST ADDITION IN OPEN INTEREST							
Symbol	Expiry	Strike	Option Type	Settl. Price	Volume	Open Interest	Change in OI
GMRINFRA	28-Jan-16	17.5	CE	0.45	357	14430000	3159000
UNITECH	28-Jan-16	7.5	CE	0.2	92	18711000	2926000
ADANIPOWER	28-Jan-16	42.5	CE	0.15	176	2500000	2440000
RCOM	28-Jan-16	90	CE	2.85	1496	5024000	2304000
IFCI	28-Jan-16	30	CE	0.5	858	9820000	2220000
ASHOKLEY	28-Jan-16	95	CE	2.35	2279	4508000	2079000
JPASSOCIAT	28-Jan-16	12.5	CE	0.5	148	7680000	2064000
IFCI	28-Jan-16	27.5	CE	1.3	287	3580000	1620000
GMRINFRA	28-Jan-16	15	PE	0.5	172	6006000	1599000
ADANIPOWER	28-Jan-16	40	CE	0.25	344	3420000	1580000

STOCK OPTIONS WITH HIGHEST REDUCTION IN OPEN INTEREST							
Symbol	Expiry	Strike	Option Type	Settl. Price	Volume	Open Int.	Change in OI
ASHOKLEY	28-Jan-16	90	CE	4.65	698	1897000	-532000
JPASSOCIAT	28-Jan-16	17.5	PE	5.45	8	240000	-144000
RELINFRA	28-Jan-16	560	CE	54.95	368	399100	-120900
PNB	28-Jan-16	115	PE	5.4	229	708000	-116000
NHPC	28-Jan-16	20	CE	1.65	27	1269000	-108000
RELINFRA	28-Jan-16	520	CE	87.05	217	141700	-106600
DLF	28-Jan-16	110	CE	11.25	55	330000	-90000
UNIONBANK	28-Jan-16	150	PE	10.8	67	126000	-66000
ADANIPOWER	28-Jan-16	27.5	PE	0.3	61	740000	-60000
IFCI	28-Jan-16	27.5	PE	1.35	114	1280000	-60000

**Disclosure**

- The Research Analysts and /or Ashika Stock Broking Limited do hereby certify that all the views expressed in this research report accurately reflect their views about the subject issuer(s) or securities. Moreover, they also certify the followings:-
- The Research Analyst or Ashika Stock Broking Limited or his/its Associates or his/its relative, has any financial interest in the subject company(ies) covered in this report. **No**
- The Research Analyst or Ashika Stock Broking Limited or his/its Associates or his/its relative, have actual/beneficial ownership of 1% or more in the subject company, at the end of the month immediately preceding the date of the publication of the research report. **No**
- The Research Analyst or Ashika Stock Broking Limited or his/its Associates or his/its relatives has any material conflict of interest at the time of publication of the research report. **No**
- The Research Analyst or Ashika Stock Broking Limited or his/its Associates have received compensation for investment banking or merchant banking or brokerage services or for product other than for investment banking or merchant banking or brokerage services from the companies covered in this report in the past 12 months. **No**
- The Research Analyst or Ashika Stock Broking Limited or his/its Associates have managed or co managed in the previous 12 months any private or public offering of securities for the company(ies) covered in this report. **No**
- The Research Analyst or Ashika Stock Broking Limited or his/its Associates have received any compensation or other benefits from the company(ies) covered in this report or any third party in connection with the Research Report. **No**
- The Research Analyst has served as an officer, director or employee of the company(ies) covered in the research report. **No**
- The Research Analyst or Ashika Stock Broking Limited has been engaged in Market making activity of the company(ies) covered in the research report. **No**

**Disclaimer**

This report is for the personal information of the authorized recipient and does not construe to be any investment, legal or taxation advice to you. Ashika Stock Broking Ltd. is not soliciting any action based upon it. This report is not for public distribution and has been furnished to you solely for your information and should not be reproduced or redistributed to any other person in any form. The report is based upon information that we consider reliable, but we do not represent that it is accurate or complete, and it should not be relied upon such. Ashika Stock Broking Ltd. or any of its affiliates or employees shall not be in anyway responsible for any loss or damage that may arise to any person from any inadvertent error in the information contained in this report. Ashika Stock Broking Ltd., or any of its affiliates or employees do not provide, at any time, any express or implied warranty of any kind, regarding any matter pertaining to this report, including without limitation the implied warranties of merchantability, fitness for a particular purpose, and non-infringement. The recipients of this report should rely on their own investigations.