

Technical Report

Closing Brief

Market opened gap down on growth concerns in China, which led to a sell-off in Chinese equities. However, Nifty witnessed recovery in the second half of the trade post European markets opening on a flat note.

Technical Build up

- ❖ Bearish candle with increasing volume
- ❖ Sell crossover in oscillators.
- ❖ Upper band of Bollinger exist at 8009
- ❖ Crucial moving average of 20/50 SMA are at 7796 and 7872
- ❖ 200 SMA trend deciding level exist at 8180

Outlook for the day

Indian equity market opened with a huge gap of almost 80 points on the down side. Later, as the day progressed, it slowly kept advancing and filled the entire gap and finally settled on flat note. On the technical front Nifty formed yet another bearish candle with rise in volume. the index has closed near its major previous swing lows region of 7540-7550 levels and hence any sustenance below 7500 can make Nifty to slide towards 7250-7300 levels in the near term, while resistances are placed in the zone of 7660-7680 zones, and above it near 7740. On the F&O front rise in OI followed by decrease in price indicates of short buildup in the market. While India VIX too increased followed by PCR remaining at high of 0.80. On the option front Put writers were seen shifting lower from 7700 to 7800. Additions were also seen in Calls of 7700 strike prices.



Increase in OI with Increase in Price (Long Buildup)					
Symbol	Prev OI	Curr OI	OI Chg (%)	Curr Pr.	Pr.Chg (%)
MINDT					
REE	887	993	12	1470.9	4.3
VEDL	16183	17994	11.2	85.45	5.2
RPOW					
ER	4666	5043	8.1	60.4	2.7
RELINF					
RA	9243	9942	7.6	585.15	0.2
HINDU					
NILVR	5734	6092	6.2	815	0.2

Increase in OI with Decrease in Price (Short Buildup)					
Symbol	Prev OI	Curr OI	OI Chg (%)	Curr Pr.	Pr.Chg (%)
WIPRO	6538	7227	10.5	534.5	[3.0]
ABIRLA					
NUVO	3755	4091	9	2256.6	[4.0]
TCS	17985	19282	7.2	2352.5	[1.7]
ORIENT					
BANK	3515	3745	6.5	123.4	[3.2]
PIDILITI					
ND	795	847	6.5	552.95	[1.1]

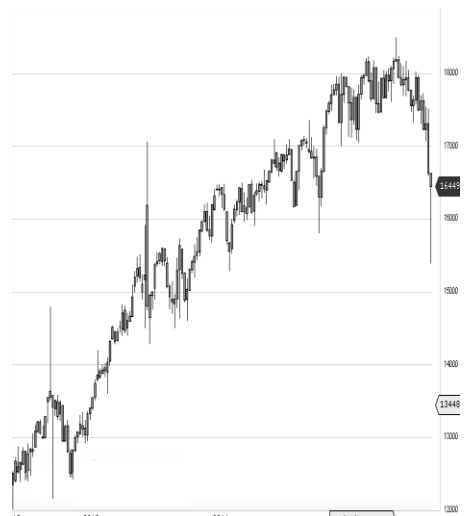
World Indices	LTP	Daily Ch(Pts)	Daily Ch(%)
Dow Jones	16398	52	0.32
Nasdaq	4637	-5	-0.12
S&P 500	1923	1	0.09
FTSE 100	5871	-40	-0.69
DAX	9825	-24	-0.25
Hang Seng	19991	103	0.52
Nikkei	17353	-344	-1.94
Sensex	24825	-109	-0.44
Nifty	7563	-37	-0.49

Commodity /Forex	LTP	Daily Ch(Pts)	Daily Ch(%)
Gold (\$/Oz)	1093.90	-2.30	-0.21
Silver (\$/Oz)	13.85	-0.02	-0.15
Copper(USD/lb.)	197.65	0.40	0.20
Brent Crude(USD/bbl)	31.42	-0.13	-0.41
USD/INR	66.80	0.17	0.26
USD/YEN	117.79	0.03	0.03
USD/EUR	1.0847	-0.0012	-0.11

Support/Resistance levels for Indian Equity Indices					
	S1	S2	CMP	R1	R2
Sensex	24620	24415	24825	25000	25180
Nifty	7500	7440	7563	7615	7670
Nifty (Fut)	7520	7460	7583	7635	7690

Pivot Level					
Sensex					
Nifty			7554		

US: US market closed mixed Monday, stabilizing after their worst week since 2011, as declines in commodity prices weighed. Technically DJIA is presently trading at the 5th leg through Elliot wave count with negative divergence in oscillators.



Nifty declined by 0.49% with Nifty future added 4.8 lakh shares in open interest and stock future added 599.2 Lakh shares in open interest.

- Nifty PCR decreased to 0.80 from 0.81.
- Total Nifty Calls added 48.9 lakh shares in open interest.
- Total Nifty Puts added 33.1 lakh shares in open interest.
- Maximum open interest (Nifty) in Calls for Jan series is at 8000 and 7500 put.
- FII's sold net Rs.1319.24 (provisional), while DIIs bought net Rs.900.99 Cr in cash market.
- FII bought net Rs. 661.25 Cr in F&O
- Securities in Ban Period: DLF & IBREALEST

Nifty Tracker

PARTICULARS	11/01/2016	08/01/2016	07/01/2016	06/01/2016
Spot	7563.85	7601.35	7568.3	7741
% Change in Spot	-0.49%	0.44%	-2.23%	-0.56%
Nifty(FUT) Jan	7583.75	7605.2	7582.05	7750.05
Nifty(FUT) Jan Vol.	197958	147344	222028	162041
Nifty(FUT) Jan - OI	21964275	21614100	21577725	20817075
Nifty(FUT) Feb	7609.3	7627.35	7606.65	7773.45
Nifty(FUT) Feb Vol.	7385	4401	10027	5370
Nifty(FUT) Feb - OI	919650	810750	808575	696300

Trade Statistics for 11/01/2016

PARTICULARS	NO. OF CONTRACTS	TURNOVER (RS. CR.)	PUT CALL RATIO
NSE Index Futures	3,29,385	17619	-
NSE Stock Futures	5,20,350	26266	-
NSE Index Options	32,83,353	1,85,837.49	-
NSE Stock Options	3,02,620	15741	0.47
NSE F&O Total Turnover	44,35,709	245,463	0.79
NSE Cash Turnover	-	16360	-
BSE Cash Turnover	-	2917.95	-
Total Turnover	-	264741	-

FII Corner (F&O)

FII NET BUYING/SELLING & CHANGE IN OPEN INTEREST (Cr. Rupee)						
PARTICULARS	11/01/2016		08/01/2016		07/01/2016	
	Net Buying /Selling	Change In Open interest	Net Buying /Selling	Change In Open interest	Net Buying /Selling	Change In Open interest
Index Future	-319	175	-356	-214	-1566	213
Index option	1624	3852	124	3924	3844	5944
Stock Future	-613	383	-367	1020	-82	-1165
Stock option	-31	177	29	248	-86	201
Total	661	4587	-570	4979	2110	5192

Market Open Interest

ADDITION/REDUCTION IN MARKET OPEN INTEREST					
Contracts	11/01/2016	08/01/2016	07/01/2016	06/01/2016	05/01/2016
Index Futures	494	43	431	206	720
Index Options	903	1567	-1986	538	1653
Stock Futures	6585	4550	7914	4438	8338
Stock Options	1002	918	1601	1302	1515
F&O Total	8985	7079	7960.65	6484	12225.43

Nifty Option Open Interest Statistics

NIFTY OPTIONS HIGHEST ADDITION IN OPEN INTEREST						
Expiry	Strike	Option Type	Settlement Price	Volume	Open Interest	Change In OI
28-Jan-16	7700	CE	58.2	301582	5017500	1587300
28-Jan-16	7300	PE	37.35	184743	5233500	1410825
28-Jan-16	7400	PE	55.4	248781	4693050	799050
28-Jan-16	7800	CE	30.4	261571	5339550	690675
28-Jan-16	7100	PE	16.25	63222	2228775	583050
28-Jan-16	7600	CE	102.5	241925	2767800	518925
28-Jan-16	7400	CE	231.75	23243	923400	416100
25-Feb-16	7100	PE	51.65	10367	784425	363225
28-Jan-16	7900	CE	15.1	181184	5636175	317550
28-Jan-16	7200	PE	24.7	120985	2542200	203325

NIFTY OPTIONS HIGHEST REDUCTION IN OPEN INTEREST						
Expiry	Strike	Option Type	Settlement Price	Volume	Open Interest	Change In OI
28-Jan-16	7800	PE	246.2	15372	2468325	-300600
28-Jan-16	7700	PE	176.4	46495	3413775	-252900
28-Jan-16	7600	PE	121.3	133470	3539325	-242550
28-Jan-16	8100	CE	4.45	67815	4375050	-227400
28-Jan-16	8300	CE	1.45	19878	2569275	-204150
25-Feb-16	7500	PE	142.8	12579	1052400	-180375
25-Feb-16	7300	PE	86.2	5989	511125	-62475
28-Jan-16	7900	PE	331.4	4727	1437225	-55500
28-Jan-16	8100	PE	515.3	1021	550350	-33225
28-Jan-16	8150	CE	3.55	2159	93750	-32925

Stock Option Open Interest Statistics

STOCK OPTIONS WITH HIGHEST ADDITION IN OPEN INTEREST							
Symbol	Expiry	Strike	Option Type	Settl. Price	Volume	Open Interest	Change in OI
TV18BRDCST	28-Jan-16	50	CE	1.55	897	10285000	2244000
JPASSOCIAT	28-Jan-16	12.5	CE	0.2	111	14160000	2160000
GMRINFRA	28-Jan-16	17.5	CE	0.15	95	18213000	1599000
UNITECH	28-Jan-16	7.5	CE	0.15	51	23254000	1232000
SBIN	28-Jan-16	210	CE	3.95	3182	2628000	1168000
RPOWER	28-Jan-16	55	PE	0.65	481	2748000	1152000
JPASSOCIAT	28-Jan-16	10	PE	0.25	42	3888000	1056000
VEDL	28-Jan-16	80	PE	2.05	1176	1944000	1016000
RPOWER	28-Jan-16	55	CE	5.8	179	2424000	996000
SBIN	28-Jan-16	220	CE	1.55	4039	4438000	940000

STOCK OPTIONS WITH HIGHEST REDUCTION IN OPEN INTEREST							
Symbol	Expiry	Strike	Option Type	Settl. Price	Volume	Open Int.	Change in OI
RELIANCE	28-Jan-16	1040	CE	35.25	4595	673500	-405000
UNITECH	28-Jan-16	7.5	PE	1	9	8547000	-385000
HINDALCO	28-Jan-16	72.5	PE	1.2	151	440000	-255000
SBIN	28-Jan-16	230	CE	0.6	2671	6470000	-204000
IBREALEST	28-Jan-16	70	CE	0.4	31	2511000	-198000
ASHOKLEY	28-Jan-16	87.5	PE	0.9	138	1512000	-196000
RELIANCE	28-Jan-16	1020	CE	47.7	1588	514000	-185000
IFCI	28-Jan-16	35	CE	0.1	10	3440000	-180000
ASHOKLEY	28-Jan-16	95	CE	1.9	1028	5530000	-175000
DLF	28-Jan-16	110	CE	5.6	101	1650000	-175000

Disclosure

- The Research Analysts and /or Ashika Stock Broking Limited do hereby certify that all the views expressed in this research report accurately reflect their views about the subject issuer(s) or securities. Moreover, they also certify the followings:-
- The Research Analyst or Ashika Stock Broking Limited or his/its Associates or his/its relative, has any financial interest in the subject company(ies) covered in this report. **No**
- The Research Analyst or Ashika Stock Broking Limited or his/its Associates or his/its relative, have actual/beneficial ownership of 1% or more in the subject company, at the end of the month immediately preceding the date of the publication of the research report. **No**
- The Research Analyst or Ashika Stock Broking Limited or his/its Associates or his/its relatives has any material conflict of interest at the time of publication of the research report. **No**
- The Research Analyst or Ashika Stock Broking Limited or his/its Associates have received compensation for investment banking or merchant banking or brokerage services or for product other than for investment banking or merchant banking or brokerage services from the companies covered in this report in the past 12 months. **No**
- The Research Analyst or Ashika Stock Broking Limited or his/its Associates have managed or co managed in the previous 12 months any private or public offering of securities for the company(ies) covered in this report. **No**
- The Research Analyst or Ashika Stock Broking Limited or his/its Associates have received any compensation or other benefits from the company(ies) covered in this report or any third party in connection with the Research Report. **No**
- The Research Analyst has served as an officer, director or employee of the company(ies) covered in the research report. **No**
- The Research Analyst or Ashika Stock Broking Limited has been engaged in Market making activity of the company(ies) covered in the research report. **No**

Disclaimer

This report is for the personal information of the authorized recipient and does not construe to be any investment, legal or taxation advice to you. Ashika Stock Broking Ltd. is not soliciting any action based upon it. This report is not for public distribution and has been furnished to you solely for your information and should not be reproduced or redistributed to any other person in any form. The report is based upon information that we consider reliable, but we do not represent that it is accurate or complete, and it should not be relied upon such. Ashika Stock Broking Ltd. or any of its affiliates or employees shall not be in anyway responsible for any loss or damage that may arise to any person from any inadvertent error in the information contained in this report. Ashika Stock Broking Ltd., or any of its affiliates or employees do not provide, at any time, any express or implied warranty of any kind, regarding any matter pertaining to this report, including without limitation the implied warranties of merchantability, fitness for a particular purpose, and non-infringement. The recipients of this report should rely on their own investigations.