

Technical Report

Closing Brief

Key benchmark indices ended the volatile session on a positive note as firmness in global stocks boosted sentiment. However, the broad market depicted weakness. There were more than three losers against every gainer on BSE. 2,158 shares fell and 645 shares rose. A total of 168 shares were unchanged.

Technical Build up

- ❖ Bullish Harami candle with increasing volume
- ❖ Sell crossover in oscillators.
- ❖ Lower band of Bollinger exist at 7496
- ❖ Crucial moving average of 20/50 SMA are at 7774 and 7812
- ❖ 200 SMA trend deciding level exist at 8153

Outlook for the day

Indian equity market ended in green after a highly volatile trading session. Market recovered at the end of the day after European market opened on a strong note (up 1%) and smart gained US Future. On the technical front the momentum oscillator still away from being oversold zone is warranting towards further weakness. A sustained close below 7500 would accelerate the fall while any respites could be temporary in nature. Breaking down 7500 of Nifty will lead to fall where support will lie at 7400 which is 138.3% down of Fibonacci retracement of the entire rally (7551-7972). Positive possibilities will sustain if Index(Nifty) strengthens and sustains above 7880 which is unlikely. On the F&O front increase in OI followed by increase in price indicates of long buildup in the future contract. India VIX declined in the previous trading session but continues to remain at elevated level of 18. On the option front unwinding of short in higher strike price call option of 7700 & 8100 were seen while lower strike price put option of 7200 & 7400 saw long addition. Hence to sum up, negative bias is likely to remain in the market.



Increase in OI with Increase in Price (Long Buildup)

Symbol	Prev OI	Curr OI	OI Chg (%)	Curr Pr.	Pr.Chg (%)
HINDZI					
NC	621	748	20.5	142.45	0.7
ULTRA					
CEMCO	6113	6960	13.9	2680.05	0.6
DABUR	1790	2031	13.5	257.75	0.7
DLF	9447	10265	8.7	110.25	0.2
AMBUJ					
ACEM	3182	3402	6.9	198.1	1.2

Increase in OI with Decrease in Price (Short Buildup)

Symbol	Prev OI	Curr OI	OI Chg (%)	Curr Pr.	Pr.Chg (%)
IDBI	4976	5747	15.5	69.95	[5.4]
BANKI					
NDIA	8479	9539	12.5	94.3	[6.5]
POWE					
RGRID	3868	4247	9.8	142.55	[0.5]
CANBK	7921	8639	9.1	198.25	[3.9]
SRF	1804	1965	8.9	1270.5	[2.6]

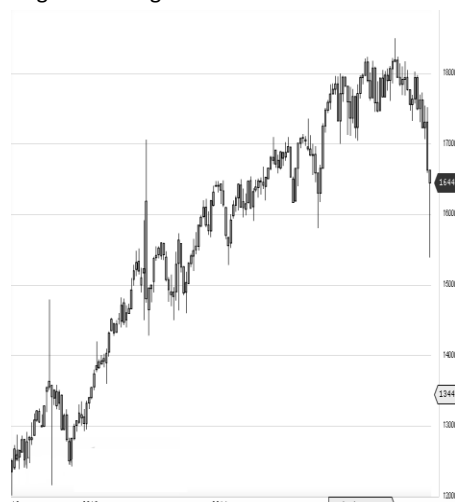
World Indices	LTP	Daily Ch(Pts)	Daily Ch(%)
Dow Jones	16151	-364	-2.21
Nasdaq	4526	-159	-3.41
S&P 500	1890	-48	-2.50
FTSE 100	5960	31	0.54
DAX	9960	-24	-0.25
Hang Seng	19606	-327	-1.64
Nikkei	17065	-649	-3.67
Sensex	24854	172	0.70
Nifty	7562	52	0.69

Commodity /Forex	LTP	Daily Ch(Pts)	Daily Ch(%)
Gold (\$/Oz)	1092.80	5.70	0.52
Silver (\$/Oz)	14.14	-0.02	-0.15
Copper(USD/lb.)	194.70	-0.90	-0.46
Brent Crude(USD/bbl)	30.06	-0.25	-0.82
USD/INR	66.85	-0.01	-0.02
USD/YEN	117.43	-0.25	-0.21
USD/EUR	1.0887	0.0010	0.09

Support/Resistance levels for Indian Equity Indices					
	S1	S2	CMP	R1	R2
Sensex	24515	24385	24854	24980	25150
Nifty	7460	7420	7562	7600	7650
Nifty (Fut)	7475	7435	7574	7615	7665

Pivot Level	
Sensex	24732
Nifty	7526

US: US market closed sharply lower Wednesday, pressured by low oil prices, as concerns about global economic slowdown weighed ahead of major earnings reports. Technically DJIA is presently trading at the 5th leg through Elliot wave count with negative divergence in oscillators.



Nifty gained by 0.69% with Nifty future added 5.7 lakh shares in open interest and stock future added 108.6 Lakh shares in open interest.

- Nifty PCR decreased to 0.79 from 0.78
- Total Nifty Calls shaded 3.6 lakh shares in open interest.
- Total Nifty Puts added 3.3 lakh shares in open interest.
- Maximum open interest (Nifty) in Calls for Jan series is at 8000 and 7500 put.
- FII's sold net Rs.75.9 (provisional), while DIIs bought net Rs.618.79 Cr in cash market.
- FII bought net Rs. 1374.32 Cr in F&O
- Securities in Ban Period: IBREALEST, JINDALSTEL, JISJALEQS, RELCAPITAL, RELINFRA & UNITECH

Nifty Tracker

PARTICULARS	13/01/2016	12/01/2016	11/01/2016	08/01/2016
Spot	7562.4	7510.3	7563.85	7563.85
% Change in Spot	0.69%	-0.71%	0.00%	-0.49%
Nifty(FUT) Jan	7574.55	7534.05	7583.75	7583.75
Nifty(FUT) Jan Vol.	298262	155098	197958	197958
Nifty(FUT) Jan - OI	22206975	21793425	21964275	21964275
Nifty(FUT) Feb	7597.1	7557.35	7609.3	7609.3
Nifty(FUT) Feb Vol.	13234	7356	7385	7385
Nifty(FUT) Feb - OI	1190925	1052025	919650	919650

Trade Statistics for 13/01/2016

PARTICULARS	NO. OF CONTRACTS	TURNOVER (RS. CR.)	PUT CALL RATIO
NSE Index Futures	4,85,012	25827	-
NSE Stock Futures	7,32,345	36174	-
NSE Index Options	52,76,666	2,96,758.22	-
NSE Stock Options	5,25,244	26846	0.58
NSE F&O Total Turnover	70,19,267	385,605	0.72
NSE Cash Turnover	-	22573	-
BSE Cash Turnover	-	2917.95	-
Total Turnover	-	411096	-

FII Corner (F&O)

FII NET BUYING/SELLING & CHANGE IN OPEN INTEREST (Cr. Rupee)						
PARTICULARS	13/01/2016		12/01/2016		11/01/2016	
	Net Buying /Selling	Change In Open interest	Net Buying /Selling	Change In Open interest	Net Buying /Selling	Change In Open interest
Index Future	322	66	-248	198	-319	175
Index option	535	3266	-15	2101	1624	3852
Stock Future	531	91	-408	-19	-613	383
Stock option	-13	580	15	175	-31	177
Total	1375	4003	-656	2455	661	4587

Market Open Interest

ADDITION/REDUCTION IN MARKET OPEN INTEREST					
Contracts	13/01/2016	12/01/2016	11/01/2016	08/01/2016	07/01/2016
Index Futures	250	443	494	43	431
Index Options	-316	56	903	1567	-1986
Stock Futures	636	4105	6585	4550	7914
Stock Options	1105	1439	1002	918	1601
F&O Total	1676	6042	8984.83	7078.69	7960.65

Nifty Option Open Interest Statistics

NIFTY OPTIONS HIGHEST ADDITION IN OPEN INTEREST						
Expiry	Strike	Option Type	Settlement Price	Volume	Open Interest	Change In OI
25-Feb-16	8000	CE	38.1	27815	1747650	462825
28-Jan-16	7200	PE	19.15	201979	3065025	342600
28-Jan-16	7300	CE	297	12127	619350	293850
28-Jan-16	7400	PE	48.25	376851	4931700	288525
28-Jan-16	7500	CE	147	256999	2481375	229050
28-Jan-16	7000	PE	7.65	91238	2573925	218925
28-Jan-16	7400	CE	217.7	54289	1162275	201900
25-Feb-16	7900	CE	57.75	16681	541425	106800
28-Jan-16	7800	CE	26.85	379164	5591775	102525
25-Feb-16	8300	CE	8.1	16334	1172400	99525

NIFTY OPTIONS HIGHEST REDUCTION IN OPEN INTEREST						
Expiry	Strike	Option Type	Settlement Price	Volume	Open Interest	Change In OI
28-Jan-16	8100	CE	3.7	91751	3451200	-905475
28-Jan-16	7500	PE	76.1	457490	5704200	-322800
28-Jan-16	7700	CE	51.6	476176	5525025	-319200
28-Jan-16	7800	PE	253.3	14893	2035650	-253575
28-Jan-16	7900	CE	13.05	269807	5371275	-237150
28-Jan-16	8000	CE	6.7	202743	6871050	-215250
28-Jan-16	8100	PE	525.95	4630	364800	-178725
28-Jan-16	8300	CE	1.25	16929	2201550	-174900
28-Jan-16	8200	CE	2.35	63555	4984875	-112950
28-Jan-16	7600	CE	91.25	550220	3408825	-111300

Stock Option Open Interest Statistics

STOCK OPTIONS WITH HIGHEST ADDITION IN OPEN INTEREST							
Symbol	Expiry	Strike	Option Type	Settl. Price	Volume	Open Interest	Change in OI
GMRINFRA	28-Jan-16	15	CE	0.4	623	10218000	3822000
GMRINFRA	28-Jan-16	17.5	CE	0.1	227	20046000	2418000
JPASSOCIAT	28-Jan-16	10	CE	0.65	102	4416000	2352000
IFCI	28-Jan-16	27.5	CE	0.55	662	6920000	2320000
ICICIBANK	28-Jan-16	250	CE	3.6	4147	5572600	2041700
ADANIPOWER	28-Jan-16	27.5	PE	0.15	236	2880000	1680000
ASHOKLEY	28-Jan-16	95	CE	1.25	2133	7469000	1330000
IDBI	28-Jan-16	75	CE	1.3	716	1720000	1224000
GMRINFRA	28-Jan-16	10	PE	0.05	53	1755000	1053000
INFY	28-Jan-16	1100	CE	25.65	9899	1771000	1001000

STOCK OPTIONS WITH HIGHEST REDUCTION IN OPEN INTEREST							
Symbol	Expiry	Strike	Option Type	Settl. Price	Volume	Open Int.	Change in OI
NHPC	28-Jan-16	20	PE	0.5	154	2565000	-2025000
GMRINFRA	28-Jan-16	15	PE	1	173	8892000	-1326000
UNITECH	28-Jan-16	7.5	CE	0.05	18	25795000	-693000
RCOM	28-Jan-16	100	CE	0.25	301	3600000	-560000
L&TFH	28-Jan-16	70	CE	0.15	72	1496000	-384000
ADANIPOWER	28-Jan-16	37.5	CE	0.2	283	5240000	-360000
DLF	28-Jan-16	100	PE	1.05	674	1405000	-335000
VEDL	28-Jan-16	80	CE	4.25	454	708000	-312000
SOUTHBANK	28-Jan-16	22.5	CE	0.15	32	3388000	-308000
ADANIPOWER	28-Jan-16	32.5	PE	1.4	97	1360000	-300000

Disclosure

- The Research Analysts and /or Ashika Stock Broking Limited do hereby certify that all the views expressed in this research report accurately reflect their views about the subject issuer(s) or securities. Moreover, they also certify the followings:-
- The Research Analyst or Ashika Stock Broking Limited or his/its Associates or his/its relative, has any financial interest in the subject company(ies) covered in this report. **No**
- The Research Analyst or Ashika Stock Broking Limited or his/its Associates or his/its relative, have actual/beneficial ownership of 1% or more in the subject company, at the end of the month immediately preceding the date of the publication of the research report. **No**
- The Research Analyst or Ashika Stock Broking Limited or his/its Associates or his/its relatives has any material conflict of interest at the time of publication of the research report. **No**
- The Research Analyst or Ashika Stock Broking Limited or his/its Associates have received compensation for investment banking or merchant banking or brokerage services or for product other than for investment banking or merchant banking or brokerage services from the companies covered in this report in the past 12 months. **No**
- The Research Analyst or Ashika Stock Broking Limited or his/its Associates have managed or co managed in the previous 12 months any private or public offering of securities for the company(ies) covered in this report. **No**
- The Research Analyst or Ashika Stock Broking Limited or his/its Associates have received any compensation or other benefits from the company(ies) covered in this report or any third party in connection with the Research Report. **No**
- The Research Analyst has served as an officer, director or employee of the company(ies) covered in the research report. **No**
- The Research Analyst or Ashika Stock Broking Limited has been engaged in Market making activity of the company(ies) covered in the research report. **No**

Disclaimer

This report is for the personal information of the authorized recipient and does not construe to be any investment, legal or taxation advice to you. Ashika Stock Broking Ltd. is not soliciting any action based upon it. This report is not for public distribution and has been furnished to you solely for your information and should not be reproduced or redistributed to any other person in any form. The report is based upon information that we consider reliable, but we do not represent that it is accurate or complete, and it should not be relied upon such. Ashika Stock Broking Ltd. or any of its affiliates or employees shall not be in anyway responsible for any loss or damage that may arise to any person from any inadvertent error in the information contained in this report. Ashika Stock Broking Ltd., or any of its affiliates or employees do not provide, at any time, any express or implied warranty of any kind, regarding any matter pertaining to this report, including without limitation the implied warranties of merchantability, fitness for a particular purpose, and non-infringement. The recipients of this report should rely on their own investigations.