

Technical Report

Closing Brief

Trading for the week ended on a strong note as key benchmark indices surged. World stocks rose after the Bank of Japan surprised investors by introducing a negative interest-rate policy.

Technical Build up

- ❖ Bullish Marubazu candle with increase in volume
- ❖ Buy crossover in oscillators.
- ❖ Lower band of Bollinger exist at 7196
- ❖ Crucial moving average of 20/50 SMA are at 7535 and 7704
- ❖ 200 SMA trend deciding level exist at 8090

Outlook for the day

Indian equity market witnessed a sharp rebound on Friday and ended with gain of close to two percent. Sentiments got the needed boost after the fiscal deficit data for April-December 2015-16 have presented a better picture of the government's finance compared to the corresponding period last year. On the technical front Nifty after the inverted hammer on Thursday witnessed a rebound from approx. 7200 which was important level being lower end of the long term channel. Nifty though closed marginally below the 38.2% retracement level (considering the rally since August 2013 till March 2015), now a decisive close above 7590-7600 would confirm of close above the previous swing low. RSI shows initial positive divergence suggesting the downtrend may be nearing a terminal state. A breach above 7600 could restore momentum & push it towards 7800. On the F&O front rise in price followed by increase in OI indicates long buildup. Indian VIX also decreased the previous day. On the option front long addition were seen in higher strike price call option of 7700 & 7900 while put option of 7400 & 7300 saw the maximum concentration. Hence present setup indicates that the broader range for the market during the month of February is within 7300-7900.



Increase in OI with Increase in Price (Long Buildup)					
Symbol	Prev OI	Curr OI	OI Chg (%)	Curr Pr.	Pr.Chg (%)
IRB	2042	2779	36.1	243.6	3.2
DRREDDY	11564	12853	11.2	3098.5	2.9
PFC	7218	8000	10.8	175	4.6
MARUTI	21419	23353	9	4107	0
ARVIND	1937	2109	8.9	326.75	2.4

Increase in OI with Decrease in Price (Short Buildup)					
Symbol	Prev OI	Curr OI	OI Chg (%)	Curr Pr.	Pr.Chg (%)
ENGINEER SIN	1172	2154	83.8	191.6	[1.5]
JUSTDIAL	3550	4584	29.1	603.5	[11.6]
TVSMOT OR	1557	1806	16	291.6	[0.3]
JETAIRW					
AYS	4297	4725	10	606.1	[3.7]
SBIN	35610	38500	8.1	180.35	[3.1]

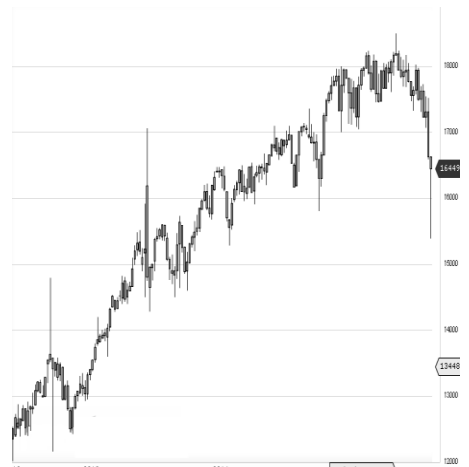
World Indices	LTP	Daily Ch(Pts)	Daily Ch(%)
Dow Jones	16466	396	2.47
Nasdaq	4613	107	2.38
S&P 500	1940	46	2.48
FTSE 100	6083	152	2.56
DAX	9798	158	1.64
Hang Seng	19648	-35	-0.18
Nikkei	17778	260	1.49
Sensex	24870	401	1.64
Nifty	7563	138	1.87

Commodity /Forex	LTP	Daily Ch(Pts)	Daily Ch(%)
Gold (\$/Oz)	1116.40	0.30	0.03
Silver (\$/Oz)	14.26	0.02	0.16
Copper(USD/lb.)	206.70	1.55	0.76
Brent Crude(USD/bbl)	35.99	1.19	3.42
USD/INR	67.79	-0.43	-0.63
USD/YEN	121.14	2.32	1.95
USD/EUR	1.0830	-0.0110	-1.01

Support/Resistance levels for Indian Equity Indices					
	S1	S2	CMP	R1	R2
Sensex	24660	24495	24870	25075	25290
Nifty	7500	7450	7563	7625	7690
Nifty (Fut)	7505	7455	7568	7630	7695

Pivot Level	
Sensex	24707
Nifty	7514

US: US market closed more than 2 percent higher percent Friday, the last trading day of January, after the Bank of Japan unexpectedly adopted a negative interest rate policy for the first time. Technically DJIA is presently trading at the 5th leg through Elliot wave count with negative divergence in oscillators.



Derivative Report

Technical & Derivative Report

Nifty gained by 1.87% with Nifty future added 6.6 lakh shares in open interest and stock future shaded 652.4 Lakh shares in open interest.

- Nifty PCR decreased to 0.89 from 0.96
- Total Nifty Calls added 199.1 lakh shares in open interest.
- Total Nifty Puts added 151.8lakh shares in open interest.
- Maximum open interest (Nifty) in Calls for Jan series is at 7600 and 7400 put.
- FII's bought net Rs.571.7 (provisional), while DIIs bought net Rs.240.02 Cr in cash market.
- FII bought net Rs.4253.60Cr in F&O
- Securities in Ban Period: NIL

Nifty Tracker

PARTICULARS	29/01/2016	28/01/2016	27/01/2016	25/01/2016
Spot	7563.55	7424.65	7437.75	7436.15
% Change in Spot	1.87%	-0.18%	0.02%	0.18%
Nifty(FUT) Feb	7568.05	7448.35	7443.3	7443.45
Nifty(FUT) Feb Vol.	206769	122239	142781	85259
Nifty(FUT) Feb - OI	19375575	18827850	14898075	7998075
Nifty(FUT) Mar	7581.75	7463.4	0	0
Nifty(FUT) Mar Vol.	5789	4768	0	0
Nifty(FUT) Mar - OI	985200	913050	0	0

Trade Statistics for 29/01/2016

PARTICULARS	NO. OF CONTRACTS	TURNOVER (RS. CR.)	PUT CALL RATIO
NSE Index Futures	3,41,576	17946	-
NSE Stock Futures	7,07,653	32377	-
NSE Index Options	23,12,648	1,28,475.97	-
NSE Stock Options	3,28,528	15420	0.51
NSE F&O Total Turnover	36,90,405	194,219	0.79
NSE Cash Turnover	-	20637	-
BSE Cash Turnover	-	2,696.87	-
Total Turnover	-	217554	-

FII Corner (F&O)

FII NET BUYING/SELLING & CHANGE IN OPEN INTEREST (Cr. Rupee)						
PARTICULARS	29/01/2016		28/01/2016		27/01/2016	
	Net Buying /Selling	Change In Open interest	Net Buying /Selling	Change In Open interest	Net Buying /Selling	Change In Open interest
Index Future	1327	1085	-1598	-8767	-619	2592
Index option	2276	6417	-798	-45762	1052	73
Stock Future	541	1881	387	-8431	852	3235
Stock option	109	1193	129	-4649	-37	-51
Total	4253	10576	-1880	-67609	1248	5849

Market Open Interest

ADDITION/REDUCTION IN MARKET OPEN INTEREST					
Contracts	29/01/2016	28/01/2016	27/01/2016	25/01/2016	22/01/2016
Index Futures	-6568	211	2903	-28	255
Index Options	-10775	3034	2842	1485	1557
Stock Futures	-71328	11101	1602	553	376
Stock Options	-15977	1418	124	15	-352
F&O Total	-104648	15764	7471.82	2024.45	1835.99

Nifty Option Open Interest Statistics

NIFTY OPTIONS HIGHEST ADDITION IN OPEN INTEREST						
Expiry	Strike	Option Type	Settlement Price	Volume	Open Interest	Change In OI
25-Feb-16	7400	PE	70.65	188521	4369950	1128750
25-Feb-16	7700	CE	61.2	186344	3285750	843900
25-Feb-16	7500	PE	99.5	118266	2615025	807675
25-Feb-16	7300	PE	49.9	135180	3219600	794925
25-Feb-16	7900	CE	16	91319	1829625	644850
25-Feb-16	7100	PE	24.5	84931	2976675	583275
25-Feb-16	7600	CE	105	215998	3646500	549900
31-Mar-16	8100	CE	38.5	10309	1247250	510300
25-Feb-16	7200	PE	34.9	135946	3765375	487125
25-Feb-16	7800	CE	32.25	136819	2565375	417300

NIFTY OPTIONS HIGHEST REDUCTION IN OPEN INTEREST						
Expiry	Strike	Option Type	Settlement Price	Volume	Open Interest	Change In OI
25-Feb-16	8100	PE	528.95	2178	729225	-104775
25-Feb-16	8000	PE	434.05	1857	1454625	-78900
25-Feb-16	7300	CE	308.7	10516	906075	-71925
25-Feb-16	8500	PE	919.45	1854	631200	-48075
25-Feb-16	9400	CE	0.6	1170	19500	-36450
25-Feb-16	7900	PE	341.95	2123	683850	-31875
25-Feb-16	8500	CE	1.4	6110	1066500	-21825
25-Feb-16	8200	PE	623.65	549	436500	-21600
25-Feb-16	8800	CE	0.85	695	74025	-13950
25-Feb-16	7800	PE	260.95	3019	883500	-10575

Stock Option Open Interest Statistics

STOCK OPTIONS WITH HIGHEST ADDITION IN OPEN INTEREST							
Symbol	Expiry	Strike	Option Type	Settl. Price	Volume	Open Interest	Change in OI
JPASSOCIAT	25-Feb-16	10	CE	0.35	138	4560000	3504000
UNITECH	25-Feb-16	7.5	CE	0.1	50	5929000	2849000
VEDL	25-Feb-16	75	CE	3.75	2741	3440000	2564000
JPASSOCIAT	25-Feb-16	12.5	CE	0.1	77	2496000	2016000
GMRIINFRA	25-Feb-16	15	CE	0.3	95	5655000	1950000
VEDL	25-Feb-16	80	CE	2.2	3089	2600000	1768000
TV18BRDCST	25-Feb-16	45	CE	1.6	323	3230000	1683000
HDIL	25-Feb-16	80	CE	2.05	450	2112000	1476000
VEDL	25-Feb-16	85	CE	1.3	988	1692000	1384000
ADANIPOWER	25-Feb-16	32.5	CE	0.5	105	1740000	1320000

STOCK OPTIONS WITH HIGHEST REDUCTION IN OPEN INTEREST							
Symbol	Expiry	Strike	Option Type	Settl. Price	Volume	Open Int.	Change in OI
VEDL	25-Feb-16	70	CE	5.8	1622	2000000	-600000
VEDL	25-Feb-16	65	CE	9.05	269	472000	-252000
ONGC	25-Feb-16	220	CE	11.95	206	162000	-170000
INDIACEM	25-Feb-16	95	CE	4.5	153	492000	-114000
ICICIBANK	25-Feb-16	230	PE	9.45	1266	843200	-110500
RPOWER	25-Feb-16	55	PE	5.3	13	156000	-84000
SYNDIBANK	25-Feb-16	70	PE	5.15	33	165000	-70000
TV18BRDCST	25-Feb-16	40	CE	4.65	16	408000	-68000
SOUTHBANK	25-Feb-16	15	CE	3.65	3	66000	-66000
ICICIBANK	25-Feb-16	250	PE	23.8	44	98600	-47600

Disclosure

- The Research Analysts and /or Ashika Stock Broking Limited do hereby certify that all the views expressed in this research report accurately reflect their views about the subject issuer(s) or securities. Moreover, they also certify the followings:-
- The Research Analyst or Ashika Stock Broking Limited or his/its Associates or his/its relative, has any financial interest in the subject company(ies) covered in this report. **No**
- The Research Analyst or Ashika Stock Broking Limited or his/its Associates or his/its relative, have actual/beneficial ownership of 1% or more in the subject company, at the end of the month immediately preceding the date of the publication of the research report. **No**
- The Research Analyst or Ashika Stock Broking Limited or his/its Associates or his/its relatives has any material conflict of interest at the time of publication of the research report. **No**
- The Research Analyst or Ashika Stock Broking Limited or his/its Associates have received compensation for investment banking or merchant banking or brokerage services or for product other than for investment banking or merchant banking or brokerage services from the companies covered in this report in the past 12 months. **No**
- The Research Analyst or Ashika Stock Broking Limited or his/its Associates have managed or co managed in the previous 12 months any private or public offering of securities for the company(ies) covered in this report. **No**
- The Research Analyst or Ashika Stock Broking Limited or his/its Associates have received any compensation or other benefits from the company(ies) covered in this report or any third party in connection with the Research Report. **No**
- The Research Analyst has served as an officer, director or employee of the company(ies) covered in the research report. **No**
- The Research Analyst or Ashika Stock Broking Limited has been engaged in Market making activity of the company(ies) covered in the research report. **No**

Disclaimer

This report is for the personal information of the authorized recipient and does not construe to be any investment, legal or taxation advice to you. Ashika Stock Broking Ltd. is not soliciting any action based upon it. This report is not for public distribution and has been furnished to you solely for your information and should not be reproduced or redistributed to any other person in any form. The report is based upon information that we consider reliable, but we do not represent that it is accurate or complete, and it should not be relied upon such. Ashika Stock Broking Ltd. or any of its affiliates or employees shall not be in anyway responsible for any loss or damage that may arise to any person from any inadvertent error in the information contained in this report. Ashika Stock Broking Ltd., or any of its affiliates or employees do not provide, at any time, any express or implied warranty of any kind, regarding any matter pertaining to this report, including without limitation the implied warranties of merchantability, fitness for a particular purpose, and non-infringement. The recipients of this report should rely on their own investigations.