

# Technical Report

## Closing Brief

Key benchmark indices logged steep losses on weak global cues. The barometer index, the S&P BSE Sensex lost 285.83 points or 1.15% to settle at 24,539. The broad market depicted weakness.

## Technical Build up

- ❖ Bearish candle with increase in volume
- ❖ Buy crossover in oscillators.
- ❖ Lower band of Bollinger exist at 7250
- ❖ Crucial moving average of 20/50 SMA are at 7498 and 7693
- ❖ 200 SMA trend deciding level exist at 8077

## Outlook for the day

Indian equity market tanked over a percent after sharp fall in the European markets, RBI left the key repo rate unchanged at 6.75%, saying it would want to wait for more inflation data and the Union Budget before taking action. On the technical front Nifty yet another bearish candle with rise in volume and inability for Nifty to breach past the crucial 7600-7635 resistance one reinstate that Nifty is likely to remain rangebound amidst the broader band of 7200-7600. The said resistance level further coincides with the 38.2% retracement level (considering the rally since August 2013 till March 2015). Hence significant selling pressure around zone might indicate an end of the pull back rally that started from 7250 odd level. On the F&O front Nifty saw incremental participation. Indian VIX witnessed an uptick. On the option front writing activity were seen in higher strike price call option of 7700 & 7900 while long addition were seen in 7200 strike price put option while lower strike price put option of 7400 & 7300 saw unwinding of short.

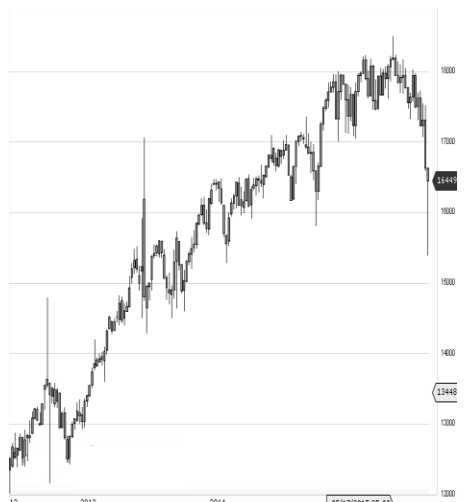
World Indices	LTP	Daily Ch(Pts)	Daily Ch(%)
Dow Jones	16153	-295	-1.80
Nasdaq	4516	-103	-2.24
S&P 500	1903	-36	-1.87
FTSE 100	5922	-138	-2.28
DAX	9581	-176	-1.81
Hang Seng	18845	-601	-3.09
Nikkei	17142	-608	-3.43
Sensex	24539	-285	-1.15
Nifty	7455	-100	-1.33

Commodity /Forex	LTP	Daily Ch(Pts)	Daily Ch(%)
Gold (\$/Oz)	1127.9	0.60	0.05
Silver (\$/Oz)	14.28	-0.01	-0.10
Copper(USD/lb.)	204.05	-1.45	-0.71
Brent Crude(USD/bbl)	32.39	-0.33	-1.01
USD/INR	67.98	0.14	0.21
USD/YEN	119.59	-0.38	-0.32
USD/EUR	1.0931	0.0012	0.11

Support/Resistance levels for Indian Equity Indices					
	S1	S2	CMP	R1	R2
Sensex	24325	24150	24539	24655	24855
Nifty	7390	7340	7455	7490	7550
Nifty (Fut)	7410	7360	7474	7510	7570

Pivot Level	
Sensex	24642
Nifty	7486

**US:** US market closed sharply lower Tuesday as renewed declines in oil prices weighed amid mixed reaction to some key earnings reports. Technically DJIA is presently trading at the 5th leg through Elliot wave count with negative divergence in oscillators.



### Increase in OI with Increase in Price (Long Buildup)

Symbol	Prev OI	Curr OI	OI Chg (%)	Curr Pr.	Pr.Chg (%)
UBL	1587	2140	34.9	814	4.2
MINDTRE	881	978	11	1508.2	1.3
BAJAJ-AUTO	8863	9517	7.4	2367	1.8
SKSMICR	7167	7513	4.8	550	0
IFCI	2891	3008	4.1	22.6	1.6

### Increase in OI with Decrease in Price (Short Buildup)

Symbol	Prev OI	Curr OI	OI Chg (%)	Curr Pr.	Pr.Chg (%)
NTPC	3499	4162	19	132.2	[5.2]
SAIL	3388	3940	16.3	38.35	[8.8]
CIPLA	9017	10249	13.7	577.9	[3.7]
TORNTPH	866	979	13.1	1349.75	[3.7]
AMARAJA	1419	1599	12.7	866	[1.5]

Nifty declined by 1.33% with Nifty future shaded 6.3 lakh shares in open interest and stock future added 352.1 Lakh shares in open interest.

- Nifty PCR decreased to 0.80 from 0.86
- Total Nifty Calls added 34.0 lakh shares in open interest.
- Total Nifty Puts shaded 10.2 lakh shares in open interest.
- Maximum open interest (Nifty) in Calls for Jan series is at 7600 and 7400 put.
- FII's sold net Rs.113.98 (provisional), while DIIs sold net Rs.323.23 Cr in cash market.
- FII sold net Rs.1160.41 Cr in F&O
- Securities in Ban Period: NIL

## Nifty Tracker

PARTICULARS	02/02/2016	01/02/2016	29/01/2016	28/01/2016
Spot	7455.55	7555.95	7563.55	7424.65
% Change in Spot	-1.33%	-0.10%	1.87%	-0.18%
Nifty(FUT) Feb	7474.95	7565.35	7568.05	7448.35
Nifty(FUT) Feb Vol.	202973	124799	206769	122239
Nifty(FUT) Feb - OI	19334400	20065575	19375575	18827850
Nifty(FUT) Mar	7490.35	7579.5	7581.75	7463.4
Nifty(FUT) Mar Vol.	8123	5296	5789	4768
Nifty(FUT) Mar - OI	1026525	1015050	985200	913050

## Trade Statistics for 02/02/2016

PARTICULARS	NO. OF CONTRACTS	TURNOVER (RS. CR.)	PUT CALL RATIO
NSE Index Futures	3,79,833	19699	-
NSE Stock Futures	6,20,552	28125	-
NSE Index Options	32,13,615	1,77,374.33	-
NSE Stock Options	3,30,819	15331	0.58
NSE F&O Total Turnover	45,44,819	240,530	0.9
NSE Cash Turnover	-	17357	-
BSE Cash Turnover	-	2,937.85	-
Total Turnover	-	260825	-

## FII Corner (F&O)

FII NET BUYING/SELLING & CHANGE IN OPEN INTEREST (Cr. Rupee)						
PARTICULARS	02/02/2016		01/02/2016		29/01/2016	
	Net Buying /Selling	Change In Open interest	Net Buying /Selling	Change In Open interest	Net Buying /Selling	Change In Open interest
Index Future	-51	-899	365	407	1327	1085
Index option	-718	451	1996	4352	2276	6417
Stock Future	-393	-12	260	1209	541	1881
Stock option	2	250	33	338	109	1193
Total	-1160	-211	2654	6306	4253	10576

## Market Open Interest

ADDITION/REDUCTION IN MARKET OPEN INTEREST					
Contracts	02/02/2016	01/02/2016	29/01/2016	28/01/2016	27/01/2016
Index Futures	-389	910	-6568	211	2903
Index Options	-431	1538	-10775	3034	2842
Stock Futures	3311	6044	-71328	11101	1602
Stock Options	1424	1850	-15977	1418	124
F&O Total	3915	10342	-104647.61	15763.74	7471.82

## Nifty Option Open Interest Statistics

NIFTY OPTIONS HIGHEST ADDITION IN OPEN INTEREST						
Expiry	Strike	Option Type	Settlement Price	Volume	Open Interest	Change In OI
25-Feb-16	7900	CE	8.35	121344	2526375	516600
25-Feb-16	7700	CE	34.4	246609	3743325	463425
25-Feb-16	7200	PE	41.65	151402	3983625	416175
25-Feb-16	7600	CE	63.2	301604	4233300	271050
31-Mar-16	8100	CE	22.35	8923	1700175	241950
25-Feb-16	7800	CE	17	228681	3796500	221850
27-Dec-18	8500	PE	898.25	3159	311775	214275
25-Feb-16	8000	CE	4.5	84767	3623700	213075
25-Feb-16	7500	CE	104.8	122021	3672150	196275
25-Feb-16	6800	PE	8.95	23965	1390200	162900

NIFTY OPTIONS HIGHEST REDUCTION IN OPEN INTEREST						
Expiry	Strike	Option Type	Settlement Price	Volume	Open Interest	Change In OI
25-Feb-16	7400	PE	92.3	261562	4240575	-530400
25-Feb-16	7300	PE	61.75	173495	3147300	-366000
25-Feb-16	7100	PE	28.15	94621	2365500	-331425
25-Feb-16	7600	PE	186.75	90150	1438800	-219375
25-Feb-16	7000	PE	19.3	67540	2917125	-194325
25-Feb-16	7900	PE	427.75	3275	533850	-137850
25-Feb-16	7500	PE	130.5	286284	3337575	-128925
25-Feb-16	7400	CE	162.8	27790	1529475	-102000
25-Feb-16	7700	PE	254.85	13887	1037250	-91050
25-Feb-16	6900	PE	13.4	33531	1187625	-75675

## Stock Option Open Interest Statistics

STOCK OPTIONS WITH HIGHEST ADDITION IN OPEN INTEREST							
Symbol	Expiry	Strike	Option Type	Settl. Price	Volume	Open Interest	Change in OI
UNITECH	25-Feb-16	7.5	CE	0.05	90	9933000	3003000
IFCI	25-Feb-16	25	CE	0.4	840	5380000	2900000
GMRINFRA	25-Feb-16	15	CE	0.2	540	8853000	2535000
ICICIBANK	25-Feb-16	220	CE	4.45	4228	2216800	1135600
IFCI	25-Feb-16	22.5	CE	1.3	283	2780000	1080000
ICICIBANK	25-Feb-16	230	CE	2.1	4570	3296300	1064200
SBIN	25-Feb-16	180	CE	4.6	4857	3122000	936000
IFCI	25-Feb-16	27.5	CE	0.15	179	2720000	880000
DLF	25-Feb-16	100	CE	2.5	948	2520000	855000
UNITECH	25-Feb-16	5	PE	0.2	14	2002000	847000

STOCK OPTIONS WITH HIGHEST REDUCTION IN OPEN INTEREST							
Symbol	Expiry	Strike	Option Type	Settl. Price	Volume	Open Int.	Change in OI
JPASSOCIAT	25-Feb-16	12.5	CE	0.05	81	2448000	-432000
VEDL	25-Feb-16	70	PE	7.05	234	816000	-420000
VEDL	25-Feb-16	60	PE	2	457	1888000	-280000
IDBI	25-Feb-16	70	CE	0.3	186	760000	-256000
VEDL	25-Feb-16	85	CE	0.25	581	1580000	-216000
BHARTIARTL	25-Feb-16	300	CE	10.25	542	284400	-198000
LT	25-Feb-16	1100	CE	45.8	1289	301800	-194100
RCOM	25-Feb-16	60	PE	3.7	307	2136000	-168000
TATASTEEL	25-Feb-16	250	PE	23.15	566	362000	-168000
NHPC	25-Feb-16	22.5	CE	0.3	83	3456000	-162000

**Disclosure**

- The Research Analysts and /or Ashika Stock Broking Limited do hereby certify that all the views expressed in this research report accurately reflect their views about the subject issuer(s) or securities. Moreover, they also certify the followings:-
- The Research Analyst or Ashika Stock Broking Limited or his/its Associates or his/its relative, has any financial interest in the subject company(ies) covered in this report. **No**
- The Research Analyst or Ashika Stock Broking Limited or his/its Associates or his/its relative, have actual/beneficial ownership of 1% or more in the subject company, at the end of the month immediately preceding the date of the publication of the research report. **No**
- The Research Analyst or Ashika Stock Broking Limited or his/its Associates or his/its relatives has any material conflict of interest at the time of publication of the research report. **No**
- The Research Analyst or Ashika Stock Broking Limited or his/its Associates have received compensation for investment banking or merchant banking or brokerage services or for product other than for investment banking or merchant banking or brokerage services from the companies covered in this report in the past 12 months. **No**
- The Research Analyst or Ashika Stock Broking Limited or his/its Associates have managed or co managed in the previous 12 months any private or public offering of securities for the company(ies) covered in this report. **No**
- The Research Analyst or Ashika Stock Broking Limited or his/its Associates have received any compensation or other benefits from the company(ies) covered in this report or any third party in connection with the Research Report. **No**
- The Research Analyst has served as an officer, director or employee of the company(ies) covered in the research report. **No**
- The Research Analyst or Ashika Stock Broking Limited has been engaged in Market making activity of the company(ies) covered in the research report. **No**

**Disclaimer**

This report is for the personal information of the authorized recipient and does not construe to be any investment, legal or taxation advice to you. Ashika Stock Broking Ltd. is not soliciting any action based upon it. This report is not for public distribution and has been furnished to you solely for your information and should not be reproduced or redistributed to any other person in any form. The report is based upon information that we consider reliable, but we do not represent that it is accurate or complete, and it should not be relied upon such. Ashika Stock Broking Ltd. or any of its affiliates or employees shall not be in anyway responsible for any loss or damage that may arise to any person from any inadvertent error in the information contained in this report. Ashika Stock Broking Ltd., or any of its affiliates or employees do not provide, at any time, any express or implied warranty of any kind, regarding any matter pertaining to this report, including without limitation the implied warranties of merchantability, fitness for a particular purpose, and non-infringement. The recipients of this report should rely on their own investigations.