

Technical Report

Closing Brief

Key benchmark indices logged steep losses on weak global cues. The barometer index, the S&P BSE Sensex lost 315.68 points or 1.29% to settle at 24,223.32. All the sectoral indices on BSE were in red. The broad market depicted weakness.

Technical Build up

- ❖ Bearish candle with increase in volume
- ❖ Sell crossover in oscillators.
- ❖ Lower band of Bollinger exist at 7261
- ❖ Crucial moving average of 20/50 SMA are at 7478 and 7684
- ❖ 200 SMA trend deciding level exist at 8070

Outlook for the day

Indian equity market slipped over a percent on Wednesday as well and ended below the psychological mark of 7400. Weak global cues, fall in commodity price and disappointing Q3 earning pulled the market down. On the technical front Nifty yet another bearish candle with rise in volume for third day in a row & slipped below 7400. Now it is near the crucial support level of 7350 breach of which continue to maintain a negative outlook for the market and inability to do so would maintain a range bound trading action for the market amidst 7200-7600 On the F&O front Nifty saw incremental participation. Indian VIX witnessed an uptick. On the option front increase in OI followed by decrease in price indicates of fresh short being added in the Index. IndiaVIX also witnessed an uptick. On the option front fresh long addition were seen 7300 & 7400 while put option of 7100 saw the same. While unwinding of long put were seen in higher strike prices of 7400 & 7500. Hence based on the data minor short covering can be seen though being short lived.

World Indices	LTP	Daily Ch(Pts)	Daily Ch(%)
Dow Jones	16336	183	1.13
Nasdaq	4504	-12	-0.28
S&P 500	1912	9	0.50
FTSE 100	5837	-84	-1.43
DAX	9434	-146	-1.53
Hang Seng	19283	291	1.54
Nikkei	17090	-100	-0.59
Sensex	24223	-315	-1.29
Nifty	7361	-93	-1.26

Commodity /Forex	LTP	Daily Ch(Pts)	Daily Ch(%)
Gold (\$/Oz)	1142.40	1.10	0.10
Silver (\$/Oz)	14.71	-0.02	-0.16
Copper(USD/lb.)	210.40	0.90	0.43
Brent Crude(USD/bbl)	35.46	0.42	1.20
USD/INR	68.07	0.09	0.13
USD/YEN	118.06	0.16	0.14
USD/EUR	1.1088	-0.0017	-0.15

Support/Resistance levels for Indian Equity Indices					
	S1	S2	CMP	R1	R2
Sensex	24120	23980	24223	24520	24635
Nifty	7330	7290	7361	7450	7485
Nifty (Fut)	7350	7310	7383	7470	7505

Pivot Level	
Sensex	24273
Nifty	7377

US: US market closed mostly higher on Wednesday, with the Dow and S&P completing a massive comeback spurred by a surge in oil. Technically DJIA is presently trading at the 5th leg through Elliot wave count with negative divergence in oscillators.

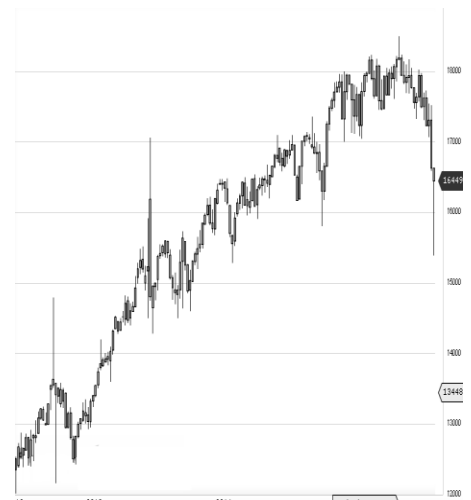


Increase in OI with Increase in Price (Long Buildup)

Symbol	Prev OI	Curr OI	OI Chg (%)	Curr Pr.	Pr.Chg (%)
HINDUNI					
LVR	7549	8345	10.5	823.35	2.4
DLF	9449	9876	4.5	95.9	2.4

Increase in OI with Decrease in Price (Short Buildup)

Symbol	Prev OI	Curr OI	OI Chg (%)	Curr Pr.	Pr.Chg (%)
CROMPG					
REAV	4684	6535	39.5	128.65	[23.3]
VOLTAS	2003	2296	14.6	277.1	[2.0]
ABIRLAN					
UVO	4863	5206	7.1	840.45	[3.5]
BHARATF					
ORG	10678	11251	5.4	787	[2.6]
JINDALST					
EL	6075	6328	4.2	56.1	[6.9]



Nifty declined by 1.26% with Nifty future added 2.9 lakh shares in open interest and stock future added 417.4 Lakh shares in open interest.

- Nifty PCR remained unchanged at 0.80
- Total Nifty Calls added 26.3 lakh shares in open interest.
- Total Nifty Puts shaded 18.5 lakh shares in open interest.
- Maximum open interest (Nifty) in Calls for Jan series is at 7600 and 7400 put.
- FII's sold net Rs.357.13 (provisional), while DIIs sold net Rs.144.78 Cr in cash market.
- FII sold net Rs.228.34 Cr in F&O
- Securities in Ban Period: NIL

Nifty Tracker

PARTICULARS	03/02/2016	02/02/2016	01/02/2016	29/01/2016
Spot	7361.8	7455.55	7555.95	7563.55
% Change in Spot	-1.26%	-1.33%	-0.10%	1.87%
Nifty(FUT) Feb	7383.5	7474.95	7565.35	7568.05
Nifty(FUT) Feb Vol.	161319	202973	124799	206769
Nifty(FUT) Feb - OI	19463475	19334400	20065575	19375575
Nifty(FUT) Mar	7398.1	7490.35	7579.5	7581.75
Nifty(FUT) Mar Vol.	9139	8123	5296	5789
Nifty(FUT) Mar - OI	1117875	1026525	1015050	985200

Trade Statistics for 03/02/2016

PARTICULARS	NO. OF CONTRACTS	TURNOVER (RS. CR.)	PUT CALL RATIO
NSE Index Futures	3,00,456	15302	-
NSE Stock Futures	5,78,575	25720	-
NSE Index Options	29,24,045	1,59,814.43	-
NSE Stock Options	3,23,703	14886	0.6
NSE F&O Total Turnover	41,26,779	215,722	0.85
NSE Cash Turnover	-	16253	-
BSE Cash Turnover	-	2,708.89	-
Total Turnover	-	234684	-

FII Corner (F&O)

FII NET BUYING/SELLING & CHANGE IN OPEN INTEREST (Cr. Rupee)						
PARTICULARS	03/02/2016		02/02/2016		01/02/2016	
	Net Buying /Selling	Change In Open interest	Net Buying /Selling	Change In Open interest	Net Buying /Selling	Change In Open interest
Index Future	-352	-174	-51	-899	365	407
Index option	472	1451	-718	451	1996	4352
Stock Future	-296	-291	-393	-12	260	1209
Stock option	-52	198	2	250	33	338
Total	-228	1184	-1160	-211	2654	6306

Market Open Interest

ADDITION/REDUCTION IN MARKET OPEN INTEREST					
Contracts	03/02/2016	02/02/2016	01/02/2016	29/01/2016	28/01/2016
Index Futures	-48	-389	910	-6568	211
Index Options	-554	-431	1538	-10775	3034
Stock Futures	3805	3311	6044	-71328	11101
Stock Options	733	1424	1850	-15977	1418
F&O Total	3936	3915	10341.91	-104647.61	15763.74

Nifty Option Open Interest Statistics

NIFTY OPTIONS HIGHEST ADDITION IN OPEN INTEREST						
Expiry	Strike	Option Type	Settlement Price	Volume	Open Interest	Change In OI
25-Feb-16	7400	CE	112.3	146290	2367600	838125
25-Feb-16	7100	PE	40.4	113013	2768850	403350
25-Feb-16	7300	PE	89.8	242320	3468300	321000
25-Feb-16	6800	PE	11.3	39579	1695525	305325
25-Feb-16	7600	CE	38.05	217041	4522275	288975
31-Mar-16	7000	PE	85.25	13784	1848175	287550
25-Feb-16	7300	CE	169.1	26296	1243350	274275
25-Feb-16	8000	CE	3	59772	3819000	195300
25-Feb-16	7500	CE	68.1	273816	3865800	193650
25-Feb-16	7800	CE	9.7	124180	3984525	188025

NIFTY OPTIONS HIGHEST REDUCTION IN OPEN INTEREST						
Expiry	Strike	Option Type	Settlement Price	Volume	Open Interest	Change In OI
25-Feb-16	7500	PE	183.85	63036	2884500	-453075
25-Feb-16	7400	PE	130.2	201171	3951375	-289200
25-Feb-16	7900	CE	4.95	74383	2300250	-226125
25-Feb-16	7600	PE	254.2	20761	1284375	-154425
25-Feb-16	7800	PE	424.25	4306	762000	-101100
25-Feb-16	8100	CE	1.9	12393	1903950	-95475
25-Feb-16	7200	PE	60.9	180660	3889500	-94125
25-Feb-16	8200	CE	1.55	8601	1035975	-92025
31-Mar-16	8600	CE	3.9	2104	213900	-76725
25-Feb-16	7700	PE	332.35	3666	974925	-62325

Stock Option Open Interest Statistics

STOCK OPTIONS WITH HIGHEST ADDITION IN OPEN INTEREST							
Symbol	Expiry	Strike	Option Type	Settl. Price	Volume	Open Interest	Change in OI
UNITECH	25-Feb-16	5	CE	0.4	74	3465000	2849000
JPASSOCIAT	25-Feb-16	7.5	PE	0.35	97	3936000	2640000
JPASSOCIAT	25-Feb-16	7.5	CE	0.9	70	2784000	2064000
JPASSOCIAT	25-Feb-16	10	CE	0.2	80	7296000	1968000
TV18BRDCST	25-Feb-16	42.5	CE	0.85	195	2244000	1530000
VEDL	25-Feb-16	65	CE	2.5	1334	1984000	1480000
VEDL	25-Feb-16	70	CE	1.2	1560	3908000	1448000
RCOM	25-Feb-16	60	CE	2.3	1016	3232000	1392000
ADANIPOWER	25-Feb-16	27.5	CE	0.8	152	1540000	1380000
JINDALSTEL	25-Feb-16	45	PE	1.05	340	1323000	1309000

STOCK OPTIONS WITH HIGHEST REDUCTION IN OPEN INTEREST							
Symbol	Expiry	Strike	Option Type	Settl. Price	Volume	Open Int.	Change in OI
RCOM	25-Feb-16	60	PE	5.35	222	1480000	-656000
VEDL	25-Feb-16	75	CE	0.55	1108	3076000	-432000
JINDALSTEL	25-Feb-16	70	CE	0.35	293	2625000	-378000
VEDL	25-Feb-16	65	PE	5.7	484	1072000	-344000
VEDL	25-Feb-16	80	CE	0.3	511	3332000	-336000
VEDL	25-Feb-16	85	CE	0.2	172	1316000	-264000
SBIN	25-Feb-16	170	PE	10.05	1125	1240000	-254000
SBIN	25-Feb-16	210	CE	0.4	470	1910000	-250000
RPOWER	25-Feb-16	60	CE	0.1	146	2412000	-228000
POWERGRID	25-Feb-16	150	CE	1.7	218	680000	-212000

Disclosure

- The Research Analysts and /or Ashika Stock Broking Limited do hereby certify that all the views expressed in this research report accurately reflect their views about the subject issuer(s) or securities. Moreover, they also certify the followings:-
- The Research Analyst or Ashika Stock Broking Limited or his/its Associates or his/its relative, has any financial interest in the subject company(ies) covered in this report. **No**
- The Research Analyst or Ashika Stock Broking Limited or his/its Associates or his/its relative, have actual/beneficial ownership of 1% or more in the subject company, at the end of the month immediately preceding the date of the publication of the research report. **No**
- The Research Analyst or Ashika Stock Broking Limited or his/its Associates or his/its relatives has any material conflict of interest at the time of publication of the research report. **No**
- The Research Analyst or Ashika Stock Broking Limited or his/its Associates have received compensation for investment banking or merchant banking or brokerage services or for product other than for investment banking or merchant banking or brokerage services from the companies covered in this report in the past 12 months. **No**
- The Research Analyst or Ashika Stock Broking Limited or his/its Associates have managed or co managed in the previous 12 months any private or public offering of securities for the company(ies) covered in this report. **No**
- The Research Analyst or Ashika Stock Broking Limited or his/its Associates have received any compensation or other benefits from the company(ies) covered in this report or any third party in connection with the Research Report. **No**
- The Research Analyst has served as an officer, director or employee of the company(ies) covered in the research report. **No**
- The Research Analyst or Ashika Stock Broking Limited has been engaged in Market making activity of the company(ies) covered in the research report. **No**

Disclaimer

This report is for the personal information of the authorized recipient and does not construe to be any investment, legal or taxation advice to you. Ashika Stock Broking Ltd. is not soliciting any action based upon it. This report is not for public distribution and has been furnished to you solely for your information and should not be reproduced or redistributed to any other person in any form. The report is based upon information that we consider reliable, but we do not represent that it is accurate or complete, and it should not be relied upon such. Ashika Stock Broking Ltd. or any of its affiliates or employees shall not be in anyway responsible for any loss or damage that may arise to any person from any inadvertent error in the information contained in this report. Ashika Stock Broking Ltd., or any of its affiliates or employees do not provide, at any time, any express or implied warranty of any kind, regarding any matter pertaining to this report, including without limitation the implied warranties of merchantability, fitness for a particular purpose, and non-infringement. The recipients of this report should rely on their own investigations.