

Technical Report

Closing Brief

Trading for the week started on a weak note as key equity benchmark indices skidded as a setback in European stocks triggered the latest slide on the domestic bourses. The market breadth indicating the overall health of the market was negative.

Technical Build up

- ❖ Bearish candle with decrease in volume
- ❖ Sell crossover in oscillators.
- ❖ Lower band of Bollinger exist at 7280
- ❖ Crucial moving average of 20/50 SMA are at 7446 and 7658
- ❖ 200 SMA trend deciding level exist at 8053

Outlook for the day

Indian equity market fell in later half of the session on Monday, tracking weak global cues and caution ahead of domestic GDP figure. On the technical front Nifty formed a bearish candle however it is in close proximity to its crucial support level of 7350, breach of which would void the bullish setup and might drip lower towards 7200. A breach only above 7600 could accelerate the positive momentum. On the F&O front increase in OI followed by decrease in price indicating short buildup in Nifty Future. Indian VIX surged the previous day. with PCR however decreased compared to previous day. On the option front fresh long addition were seen in 7400 & 7500 strike prices while unwinding of puts were seen across the strike prices.



Increase in OI with Increase in Price (Long Buildup)

Symbol	Prev OI	Curr OI	OI Chg (%)	Curr Pr.	Pr.Chg (%)
HDIL	2413	2802	16.1	72.75	3.2
AMBUJAC					
EM	3104	3440	10.8	195.1	0.1
ACC	7032	7757	10.3	1279	0.4
GAIL	6048	6645	9.9	341.5	0.1
UNIONBA					
NK	4410	4694	6.4	133	1.5

Increase in OI with Decrease in Price (Short Buildup)

Symbol	Prev OI	Curr OI	OI Chg (%)	Curr Pr.	Pr.Chg (%)
AJANTPH					
ARM	1013	1110	9.6	1294	[1.4]
INDUSIN					
DBK	12227	13290	8.7	883	[3.6]
DHFL	2754	2986	8.4	173.05	[3.5]
JUSTDIAL	5347	5758	7.7	525	[5.9]
STAR	4345	4635	6.7	1099	[1.1]

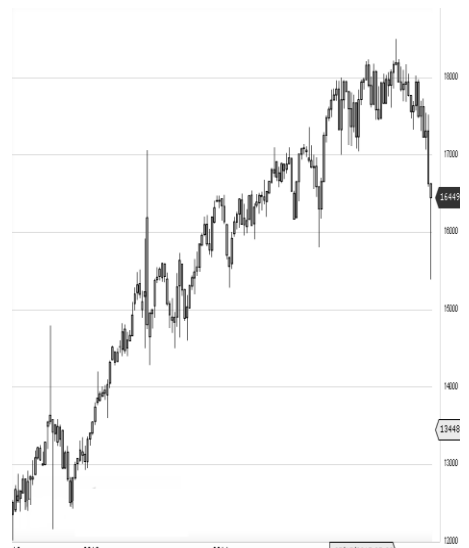
World Indices	LTP	Daily Ch(Pts)	Daily Ch(%)
Dow Jones	16027	-177	-1.10
Nasdaq	4283	-79	-1.82
S&P 500	1853	-26	-1.42
FTSE 100	5689	-158	-2.71
DAX	8979	-306	-3.30
Hang Seng	19288	105	0.55
Nikkei	16274	-729	-4.29
Sensex	24287	-329	-1.34
Nifty	7387	-101	-1.36

Commodity /Forex	LTP	Daily Ch(Pts)	Daily Ch(%)
Gold (\$/Oz)	1193.40	-4.50	-0.38
Silver (\$/Oz)	15.40	-0.03	-0.20
Copper(USD/lb.)	209.50	0.45	0.22
Brent Crude(USD/bbl)	33.34	0.46	1.40
USD/INR	67.94	0.28	0.42
USD/YEN	115.19	-0.66	-0.57
USD/EUR	1.1209	0.0016	0.14

Support/Resistance levels for Indian Equity Indices					
	S1	S2	CMP	R1	R2
Sensex	24095	23900	24287	24590	24890
Nifty	7329	7270	7387	7478	7570
Nifty (Fut)	7335	7275	7393	7485	7575

Pivot Level	
Sensex	24394
Nifty	

US: US market closed off their session lows on Monday amid a late rally in the energy sector. Technically DJIA is presently trading at the 5th leg through Elliot wave count with negative divergence in oscillators.



Nifty declined by 1.36% with Nifty future added 8.7 lakh shares in open interest and stock future added 62.8 Lakh shares in open interest.

- Nifty PCR decreased to 0.79 from 0.82
- Total Nifty Calls added 39.0 lakh shares in open interest.
- Total Nifty Puts added 3.5 lakh shares in open interest.
- Maximum open interest (Nifty) in Calls for Jan series is at 7600 and 7400 put.
- FII's sold net Rs.84.56 (provisional), while DIIs bought net Rs.279.49 Cr in cash market.
- FII bought net Rs.568.79 Cr in F&O
- Securities in Ban Period: NIL

Nifty Tracker

PARTICULARS	08/02/2016	05/02/2016	04/02/2016	03/02/2016
Spot	7387.25	7489.1	7404	7361.8
% Change in Spot	-1.36%	1.15%	0.57%	-1.26%
Nifty(FUT) Feb	7393.45	7519.2	7422.65	7383.5
Nifty(FUT) Feb Vol.	186483	176039	173559	161319
Nifty(FUT) Feb - OI	19300125	18489150	18909600	19463475
Nifty(FUT) Mar	7412.8	7537.85	7437.7	7398.1
Nifty(FUT) Mar Vol.	8117	6822	7482	9139
Nifty(FUT) Mar - OI	1272525	1240500	1172250	1117875

Trade Statistics for 05/02/2016

PARTICULARS	NO. OF CONTRACTS	TURNOVER (RS. CR.)	PUT CALL RATIO
NSE Index Futures	3,25,277	16891	-
NSE Stock Futures	5,56,952	25292	-
NSE Index Options	29,84,284	1,64,251.15	-
NSE Stock Options	3,34,211	15528	0.51
NSE F&O Total Turnover	42,00,724	221,963	0.82
NSE Cash Turnover	-	13838	-
BSE Cash Turnover	-	2,471.53	-
Total Turnover	-	238272	-

FII Corner (F&O)

FII NET BUYING/SELLING & CHANGE IN OPEN INTEREST (Cr. Rupee)						
PARTICULARS	05/02/2016		04/02/2016		03/02/2016	
	Net Buying /Selling	Change In Open interest	Net Buying /Selling	Change In Open interest	Net Buying /Selling	Change In Open interest
Index Future	-213	-215	24	575	890	206
Index option	311	673	1405	2920	579	3417
Stock Future	439	-817	-159	1508	30	780
Stock option	31	107	33	267	2	255
Total	568	-252	1303	5270	1501	4657

Market Open Interest

ADDITION/REDUCTION IN MARKET OPEN INTEREST					
Contracts	05/02/2016	04/02/2016	03/02/2016	02/02/2016	01/02/2016
Index Futures	362	95	-183	-48	-389
Index Options	-401	1873	142	-554	-431
Stock Futures	3344	2663	4802	3805	3311
Stock Options	692	812	1152	733	1424
F&O Total	3998	5443	5912.33	3935.85	3915.16

Nifty Option Open Interest Statistics

NIFTY OPTIONS HIGHEST ADDITION IN OPEN INTEREST						
Expiry	Strike	Option Type	Settlement Price	Volume	Open Interest	Change In OI
25-Feb-16	7600	CE	39.35	305705	6619575	1010775
25-Feb-16	7500	CE	70.5	241306	5136450	831375
25-Feb-16	7400	CE	114.1	75909	2897175	377100
25-Feb-16	7800	CE	9.25	153024	4691550	357450
25-Feb-16	6800	PE	8.7	23390	2277525	351750
25-Feb-16	7600	PE	240.15	38326	1623075	289350
25-Feb-16	8000	CE	2.6	64979	3922050	231375
25-Feb-16	7700	CE	19.55	232762	4789950	204000
25-Feb-16	6500	PE	2.9	9879	894750	202050
25-Feb-16	7450	CE	89.2	7438	300750	160275

NIFTY OPTIONS HIGHEST REDUCTION IN OPEN INTEREST						
Expiry	Strike	Option Type	Settlement Price	Volume	Open Interest	Change In OI
25-Feb-16	7500	PE	174	177519	3045675	-651825
25-Feb-16	7400	PE	119.75	272192	4867875	-358350
25-Feb-16	7300	PE	81.25	205724	3714750	-166950
25-Feb-16	7000	PE	22.8	67783	3275325	-161700
25-Feb-16	7200	PE	53.1	145165	4353075	-133950
25-Feb-16	7200	CE	237.5	6343	666900	-97950
25-Feb-16	7100	CE	318.75	3609	439500	-79125
31-Mar-16	8000	PE	605.15	876	685450	-42375
25-Feb-16	6400	PE	2.25	1607	201975	-32775
25-Feb-16	6600	PE	3.9	6445	674325	-27000

Stock Option Open Interest Statistics

STOCK OPTIONS WITH HIGHEST ADDITION IN OPEN INTEREST							
Symbol	Expiry	Strike	Option Type	Settl. Price	Volume	Open Interest	Change in OI
GMRINFRA	25-Feb-16	17.5	CE	0.05	41	4368000	1365000
GMRINFRA	25-Feb-16	15	CE	0.15	141	10998000	1248000
SBIN	25-Feb-16	170	PE	7.15	2926	2400000	1028000
PNB	25-Feb-16	110	CE	0.7	386	1568000	664000
ASHOKLEY	25-Feb-16	95	CE	1.35	925	4830000	553000
UNITECH	25-Feb-16	5	CE	0.4	38	7007000	462000
SBIN	25-Feb-16	140	PE	0.65	578	1812000	456000
DLF	25-Feb-16	100	PE	6.6	301	785000	440000
ADANIENT	25-Feb-16	85	CE	0.75	452	1008000	414000
HINDALCO	25-Feb-16	72.5	CE	2.2	232	1170000	390000

STOCK OPTIONS WITH HIGHEST REDUCTION IN OPEN INTEREST							
Symbol	Expiry	Strike	Option Type	Settl. Price	Volume	Open Int.	Change in OI
IFCI	25-Feb-16	25	CE	0.45	362	6800000	-520000
IFCI	25-Feb-16	22.5	CE	1.4	116	2740000	-460000
NHPC	25-Feb-16	25	CE	0.05	90	5400000	-432000
ICICIBANK	25-Feb-16	210	CE	6.05	1953	1613300	-402900
HDIL	25-Feb-16	75	CE	3.25	1112	1296000	-366000
ASHOKLEY	25-Feb-16	85	PE	1.6	363	2296000	-287000
SBIN	25-Feb-16	190	CE	2.3	2513	3094000	-274000
TATASTEEL	25-Feb-16	200	PE	2.1	1832	3688000	-260000
AXISBANK	25-Feb-16	450	CE	1.65	1425	650000	-238000
TV18BRDCST	25-Feb-16	42.5	CE	0.75	159	2278000	-238000

Disclosure

- The Research Analysts and /or Ashika Stock Broking Limited do hereby certify that all the views expressed in this research report accurately reflect their views about the subject issuer(s) or securities. Moreover, they also certify the followings:-
- The Research Analyst or Ashika Stock Broking Limited or his/its Associates or his/its relative, has any financial interest in the subject company(ies) covered in this report. **No**
- The Research Analyst or Ashika Stock Broking Limited or his/its Associates or his/its relative, have actual/beneficial ownership of 1% or more in the subject company, at the end of the month immediately preceding the date of the publication of the research report. **No**
- The Research Analyst or Ashika Stock Broking Limited or his/its Associates or his/its relatives has any material conflict of interest at the time of publication of the research report. **No**
- The Research Analyst or Ashika Stock Broking Limited or his/its Associates have received compensation for investment banking or merchant banking or brokerage services or for product other than for investment banking or merchant banking or brokerage services from the companies covered in this report in the past 12 months. **No**
- The Research Analyst or Ashika Stock Broking Limited or his/its Associates have managed or co managed in the previous 12 months any private or public offering of securities for the company(ies) covered in this report. **No**
- The Research Analyst or Ashika Stock Broking Limited or his/its Associates have received any compensation or other benefits from the company(ies) covered in this report or any third party in connection with the Research Report. **No**
- The Research Analyst has served as an officer, director or employee of the company(ies) covered in the research report. **No**
- The Research Analyst or Ashika Stock Broking Limited has been engaged in Market making activity of the company(ies) covered in the research report. **No**

Disclaimer

This report is for the personal information of the authorized recipient and does not construe to be any investment, legal or taxation advice to you. Ashika Stock Broking Ltd. is not soliciting any action based upon it. This report is not for public distribution and has been furnished to you solely for your information and should not be reproduced or redistributed to any other person in any form. The report is based upon information that we consider reliable, but we do not represent that it is accurate or complete, and it should not be relied upon such. Ashika Stock Broking Ltd. or any of its affiliates or employees shall not be in anyway responsible for any loss or damage that may arise to any person from any inadvertent error in the information contained in this report. Ashika Stock Broking Ltd., or any of its affiliates or employees do not provide, at any time, any express or implied warranty of any kind, regarding any matter pertaining to this report, including without limitation the implied warranties of merchantability, fitness for a particular purpose, and non-infringement. The recipients of this report should rely on their own investigations.