

Technical Report

Closing Brief

Trading for the week started on a weak note as key equity benchmark indices skidded as a setback in European stocks triggered the latest slide on the domestic bourses. The market breadth indicating the overall health of the market was negative.

Technical Build up

- ❖ Bearish candle with decrease in volume
- ❖ Sell crossover in oscillators.
- ❖ Lower band of Bollinger exist at 7264
- ❖ Crucial moving average of 20/50 SMA are at 7432 and 7645
- ❖ 200 SMA trend deciding level exist at 8047

Outlook for the day

Indian equity market slipped over a percent on the back of weak global cues and rising USDINR, moreover disappointing quarterly results have been dampened the market sentiment. On the technical front Nifty presently is tied amidst the range of 7200-7600 and awaiting fresh impulse to propel the market for a direction. After opening gapdown Nifty consolidated within a narrow range to form indecisive Doji candle in daily chart. On the F&O front decrease in OI followed by decrease in price indicating short covering in Nifty Future. Indian VIX again surged the previous day, PCR also increased decreased compared to previous day. On the option front fresh long addition were seen in 7400 & 7500 strike prices while unwinding of puts were seen across the strike prices. Overall an intermediate pullback can be noticed in the market.



Increase in OI with Increase in Price (Long Buildup)

Symbol	Prev OI	Curr OI	OI Chg (%)	Curr Pr.	Pr.Chg (%)
LUPIN	13294	14607	9.9	1899.5	4.3
HINDALCO	8761	9552	9	70.4	0.6
CROMPG	6816	7197	5.6	129.25	1.6
REAV	6458	6818	5.6	344.5	0.6
BHARATF	12699	13309	4.8	784.95	3

Increase in OI with Decrease in Price (Short Buildup)

Symbol	Prev OI	Curr OI	OI Chg (%)	Curr Pr.	Pr.Chg (%)
MOTHER SUMI	6662	9397	41.1	239.7	[12.0]
PNB	6633	8569	29.2	86.9	[7.6]
ALBK	1602	1795	12.1	50.85	[3.9]
TATAMO	19028	21299	11.9	312.9	[3.6]
TORS	5734	6404	11.7	499.05	[5.7]

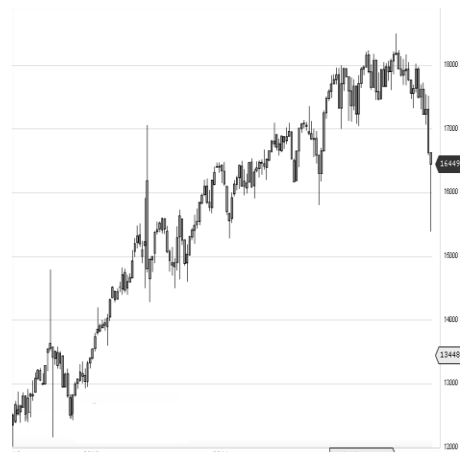
World Indices	LTP	Daily Ch(Pts)	Daily Ch(%)
Dow Jones	16014	-12	-0.08
Nasdaq	4268	-14	-0.35
S&P 500	1852	-1	-0.07
FTSE 100	5632	-57	-1.00
DAX	8879	-99	-1.11
Hang Seng	19288	105	0.55
Nikkei	15746	-339	-2.11
Sensex	24020	-266	-1.10
Nifty	7298	-89	-1.21

Commodity /Forex	LTP	Daily Ch(Pts)	Daily Ch(%)
Gold (\$/Oz)	1192.40	-6.20	-0.52
Silver (\$/Oz)	15.29	-0.16	-1.03
Copper(USD/lb.)	203.20	-0.75	-0.37
Brent Crude(USD/bbl)	30.86	0.54	1.78
USD/INR	67.89	-0.04	-0.06
USD/YEN	114.37	-0.74	-0.64
USD/EUR	1.1306	0.0013	0.12

Support/Resistance levels for Indian Equity Indices					
	S1	S2	CMP	R1	R2
Sensex	23940	23860	24020	24110	24190
Nifty	7274	7250	7298	7325	7350
Nifty (Fut)	7300	7275	7325	7350	7375

Pivot Level	
Sensex	24017
Nifty	7298

US: US market closed near the flatline Tuesday after a choppy trading session, as U.S. oil prices seesawed and investors looked ahead to Fed Chair Janet Yellen's testimony. Technically DJIA is presently trading at the 5th leg through Elliot wave count with negative divergence in oscillators.



Nifty declined by 1.21% with Nifty future shaded 6.7 lakh shares in open interest and stock future added 409.8 Lakh shares in open interest.

- Nifty PCR increased to 0.82 from 0.79
- Total Nifty Calls added 18.3 lakh shares in open interest.
- Total Nifty Puts added 38.5 lakh shares in open interest.
- Maximum open interest (Nifty) in Calls for Jan series is at 7600 and 7200 put.
- FII's sold net Rs.680.7 (provisional), while DIIs sold net Rs.174.14 Cr in cash market.
- FII bought net Rs.2432.24 Cr in F&O
- Securities in Ban Period: NIL

Nifty Tracker

PARTICULARS	09/02/2016	08/02/2016	05/02/2016	04/02/2016
Spot	7298.2	7387.25	7489.1	7404
% Change in Spot	-1.21%	-1.36%	1.15%	0.57%
Nifty(FUT) Feb	7325.05	7393.45	7519.2	7422.65
Nifty(FUT) Feb Vol.	185925	186483	176039	173559
Nifty(FUT) Feb - OI	18559125	19300125	18489150	18909600
Nifty(FUT) Mar	7344.45	7412.8	7537.85	7437.7
Nifty(FUT) Mar Vol.	9463	8117	6822	7482
Nifty(FUT) Mar - OI	1302300	1272525	1240500	1172250

Trade Statistics for 09/02/2016

PARTICULARS	NO. OF CONTRACTS	TURNOVER (RS. CR.)	PUT CALL RATIO
NSE Index Futures	3,13,488	16042	-
NSE Stock Futures	6,16,944	27067	-
NSE Index Options	34,58,564	1,88,670.08	-
NSE Stock Options	3,54,504	16092	0.6
NSE F&O Total Turnover	47,43,500	247,872	0.81
NSE Cash Turnover	-	13838	-
BSE Cash Turnover	-	2,199.32	-
Total Turnover	-	263909	-

FII Corner (F&O)

FII NET BUYING/SELLING & CHANGE IN OPEN INTEREST (Cr. Rupee)						
PARTICULARS	09/02/2016		08/02/2016		05/02/2016	
	Net Buying /Selling	Change In Open interest	Net Buying /Selling	Change In Open interest	Net Buying /Selling	Change In Open interest
Index Future	608	-117	-213	-215	24	575
Index option	3135	2148	311	673	1405	2920
Stock Future	-1294	-286	439	-817	-159	1508
Stock option	-16	44	31	107	33	267
Total	2433	1789	568	-252	1303	5270

Market Open Interest

ADDITION/REDUCTION IN MARKET OPEN INTEREST					
Contracts	09/02/2016	08/02/2016	05/02/2016	04/02/2016	03/02/2016
Index Futures	-733	362	95	-183	-48
Index Options	-421	-401	1873	142	-554
Stock Futures	4629	3344	2663	4802	3805
Stock Options	1198	692	812	1152	733
F&O Total	4673	3998	5442.55	5912.33	3935.85

Nifty Option Open Interest Statistics

NIFTY OPTIONS HIGHEST ADDITION IN OPEN INTEREST						
Expiry	Strike	Option Type	Settlement Price	Volume	Open Interest	Change In OI
25-Feb-16	7600	CE	39.35	305705	6619575	1010775
25-Feb-16	7500	CE	70.5	241306	5136450	831375
25-Feb-16	7400	CE	114.1	75909	2897175	377100
25-Feb-16	7800	CE	9.25	153024	4691550	357450
25-Feb-16	6800	PE	8.7	23390	2277525	351750
25-Feb-16	7600	PE	240.15	38326	1623075	289350
25-Feb-16	8000	CE	2.6	64979	3922050	231375
25-Feb-16	7700	CE	19.55	232762	4789950	204000
25-Feb-16	6500	PE	2.9	9879	894750	202050
25-Feb-16	7450	CE	89.2	7438	300750	160275

NIFTY OPTIONS HIGHEST REDUCTION IN OPEN INTEREST						
Expiry	Strike	Option Type	Settlement Price	Volume	Open Interest	Change In OI
25-Feb-16	7500	PE	174	177519	3045675	-651825
25-Feb-16	7400	PE	119.75	272192	4867875	-358350
25-Feb-16	7300	PE	81.25	205724	3714750	-166950
25-Feb-16	7000	PE	22.8	67783	3275325	-161700
25-Feb-16	7200	PE	53.1	145165	4353075	-133950
25-Feb-16	7200	CE	237.5	6343	666900	-97950
25-Feb-16	7100	CE	318.75	3609	439500	-79125
31-Mar-16	8000	PE	605.15	876	685450	-42375
25-Feb-16	6400	PE	2.25	1607	201975	-32775
25-Feb-16	6600	PE	3.9	6445	674325	-27000

Stock Option Open Interest Statistics

STOCK OPTIONS WITH HIGHEST ADDITION IN OPEN INTEREST							
Symbol	Expiry	Strike	Option Type	Settl. Price	Volume	Open Interest	Change in OI
PNB	25-Feb-16	100	CE	0.85	4841	4820000	2948000
PNB	25-Feb-16	90	CE	2.9	2152	2428000	1576000
PNB	25-Feb-16	95	CE	1.55	2201	2232000	1460000
PNB	25-Feb-16	85	CE	5.1	452	1292000	1260000
PNB	25-Feb-16	70	PE	0.3	566	1500000	1220000
GMRINFRA	25-Feb-16	12.5	CE	0.7	66	3861000	1053000
JISLJAEQS	25-Feb-16	50	PE	0.7	303	944000	936000
PNB	25-Feb-16	110	CE	0.2	1127	2500000	932000
PNB	25-Feb-16	85	PE	3.3	2576	2504000	916000
SBIN	25-Feb-16	180	CE	3.6	2540	4644000	876000

STOCK OPTIONS WITH HIGHEST REDUCTION IN OPEN INTEREST							
Symbol	Expiry	Strike	Option Type	Settl. Price	Volume	Open Int.	Change in OI
ICICIBANK	25-Feb-16	250	CE	0.3	548	2058700	-457300
SBIN	25-Feb-16	170	PE	9.6	1513	2106000	-294000
TATASTEEL	25-Feb-16	220	PE	4.45	1625	3608000	-288000
ICICIBANK	25-Feb-16	190	PE	1.65	985	1326000	-287300
RCOM	25-Feb-16	60	CE	2.2	1075	3936000	-264000
VEDL	25-Feb-16	70	PE	3.65	607	2100000	-252000
YESBANK	25-Feb-16	700	PE	7.85	1295	555800	-224700
TATASTEEL	25-Feb-16	200	PE	1.6	979	3476000	-212000
RCOM	25-Feb-16	75	CE	0.2	102	3024000	-184000
HDIL	25-Feb-16	70	PE	3.35	279	864000	-168000

Disclosure

- The Research Analysts and /or Ashika Stock Broking Limited do hereby certify that all the views expressed in this research report accurately reflect their views about the subject issuer(s) or securities. Moreover, they also certify the followings:-
- The Research Analyst or Ashika Stock Broking Limited or his/its Associates or his/its relative, has any financial interest in the subject company(ies) covered in this report. **No**
- The Research Analyst or Ashika Stock Broking Limited or his/its Associates or his/its relative, have actual/beneficial ownership of 1% or more in the subject company, at the end of the month immediately preceding the date of the publication of the research report. **No**
- The Research Analyst or Ashika Stock Broking Limited or his/its Associates or his/its relatives has any material conflict of interest at the time of publication of the research report. **No**
- The Research Analyst or Ashika Stock Broking Limited or his/its Associates have received compensation for investment banking or merchant banking or brokerage services or for product other than for investment banking or merchant banking or brokerage services from the companies covered in this report in the past 12 months. **No**
- The Research Analyst or Ashika Stock Broking Limited or his/its Associates have managed or co managed in the previous 12 months any private or public offering of securities for the company(ies) covered in this report. **No**
- The Research Analyst or Ashika Stock Broking Limited or his/its Associates have received any compensation or other benefits from the company(ies) covered in this report or any third party in connection with the Research Report. **No**
- The Research Analyst has served as an officer, director or employee of the company(ies) covered in the research report. **No**
- The Research Analyst or Ashika Stock Broking Limited has been engaged in Market making activity of the company(ies) covered in the research report. **No**

Disclaimer

This report is for the personal information of the authorized recipient and does not construe to be any investment, legal or taxation advice to you. Ashika Stock Broking Ltd. is not soliciting any action based upon it. This report is not for public distribution and has been furnished to you solely for your information and should not be reproduced or redistributed to any other person in any form. The report is based upon information that we consider reliable, but we do not represent that it is accurate or complete, and it should not be relied upon such. Ashika Stock Broking Ltd. or any of its affiliates or employees shall not be in anyway responsible for any loss or damage that may arise to any person from any inadvertent error in the information contained in this report. Ashika Stock Broking Ltd., or any of its affiliates or employees do not provide, at any time, any express or implied warranty of any kind, regarding any matter pertaining to this report, including without limitation the implied warranties of merchantability, fitness for a particular purpose, and non-infringement. The recipients of this report should rely on their own investigations.