

Technical Report

Closing Brief

Key benchmark indices ended a volatile trading session near flat line amid big moves among for some index constituents. The Nifty provisionally ended below the psychologically important 7,000 mark after flirting with that level in intraday trade.

Technical Build up

- ❖ Bullish Hammer candle with increase in volume
- ❖ Oversold price condition with Sell crossover in oscillators.
- ❖ Lower band of Bollinger exist at 7129
- ❖ Crucial moving average of 20/50 SMA are at 7388 and 7611
- ❖ 200 SMA trend deciding level exist at 8034

Outlook for the day

Indian equity market somehow managed to close flat on Friday after RBI Governor Raghuram Rajan's stated that the current clean-up of bank balance sheets will help spur economic growth and improve the lenders' profitability. On the technical front Nifty continued its drift lower breaching the immediate support of 7000. Though on oscillator front Nifty is in oversold price region followed by downward sloping channel line support exist around 6900 but risk remains high for a long trade and it would be wiser to follow the trend. However the only silver lining being the Nifty formed bullish hammer candle in daily chart taking support from 200dma in weekly chart indicating of a possible pullback in the market. On the F&O front increase in OI followed by marginal increase in price indicates of short covering in Nifty Future. Indian VIX decreased after 4 continuous day of gain. PCR also decreased marginally to 0.77. On the option front unwinding of 7000 strike price put option were seen and long addition were seen in 700 strike price call option.



Increase in OI with Increase in Price (Long Buildup)					
Symbol	Prev OI	Curr OI	OI Chg (%)	Curr Pr.	Pr.Chg (%)
SKSMICR	6300	6783	7.7	502	1
MOTHER	9789	10306	5.3	222.5	1.1
WIPRO	7223	7579	4.9	518.6	0
TATAMTR	6807	7135	4.8	225.9	5.4
INFRATEL	2189	2287	4.5	383.5	7.4

Increase in OI with Decrease in Price (Short Buildup)					
Symbol	Prev OI	Curr OI	OI Chg (%)	Curr Pr.	Pr.Chg (%)
BHEL	11471	12826	11.8	102.85	[14.5]
IJOB	903	1005	11.3	20.65	[7.4]
IBULHSGFIN	9557	10445	9.3	601.75	[2.2]
BPCL	9681	10391	7.3	776	[5.3]
HDIL	2998	3175	5.9	57.25	[6.6]

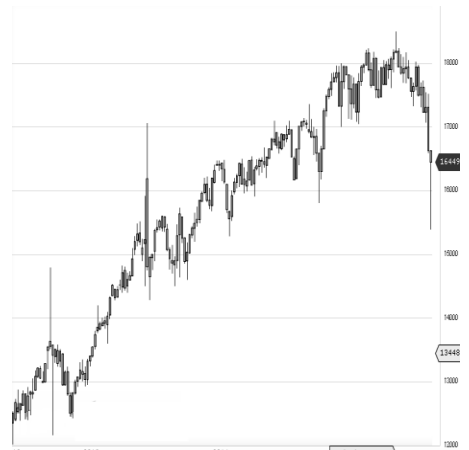
World Indices	LTP	Daily Ch(Pts)	Daily Ch(%)
Dow Jones	15973	313	2.00
Nasdaq	4337	70	1.66
S&P 500	1864	35	1.95
FTSE 100	5707	170	3.08
DAX	8967	214	2.45
Hang Seng	18701	381	2.08
Nikkei	15718	765	5.12
Sensex	22986	34	0.15
Nifty	6980	4	0.07

Commodity /Forex	LTP	Daily Ch(Pts)	Daily Ch(%)
Gold (\$/Oz)	1224.90	-14.50	-1.17
Silver (\$/Oz)	15.41	-0.38	-2.41
Copper(USD/lb.)	206.50	3.60	1.77
Brent Crude(USD/bbl)	32.95	-0.41	-1.23
USD/INR	68.23	-0.06	-0.10
USD/YEN	113.82	0.57	0.50
USD/EUR	1.1219	-0.0037	-0.33

Support/Resistance levels for Indian Equity Indices					
	S1	S2	CMP	R1	R2
Sensex	22680	22375	22986	23230	23470
Nifty	6888	6795	6980	7054	7127
Nifty (Fut)	6898	6805	6990	7065	7140

Pivot Level	
Sensex	6961
Nifty	22915

US: US closed closed sharply higher on Friday as European and American bank stocks — as well as oil prices — bounced sharply, while investors digested U.S. economic data. Technically DJIA is presently trading at the 5th leg through Elliot wave count with negative divergence in oscillators.



Nifty gained by 0.07% with Nifty future added 12.5 lakh shares in open interest and stock future added 67.4 Lakh shares in open interest.

- Nifty PCR decreased to 0.77 from 0.78
- Total Nifty Calls added 34.6 lakh shares in open interest.
- Total Nifty Puts added 17.1 lakh shares in open interest.
- Maximum open interest (Nifty) in Calls for Jan series is at 7500 and 7000 put.
- FII's sold net Rs.398.37 (provisional), while DIIs bought net Rs.545.07 Cr in cash market.
- FII bought net Rs.230.86 Cr in F&O
- Securities in Ban Period: JISJALEQS

Nifty Tracker

PARTICULARS	12/02/2016	11/02/2016	10/02/2016	09/02/2016
Spot	6980.95	6976.35	7215.7	7298.2
% Change in Spot	0.07%	-3.32%	-1.13%	-1.21%
Nifty(FUT) Feb	6990	6993.45	7246.55	7325.05
Nifty(FUT) Feb Vol.	301936	296451	242379	185925
Nifty(FUT) Feb - OI	20826075	19754250	18663375	18559125
Nifty(FUT) Mar	7008.9	7011.55	7264.4	7344.45
Nifty(FUT) Mar Vol.	20883	20859	13898	9463
Nifty(FUT) Mar - OI	2176800	1983450	1668000	1302300

Trade Statistics for 12/02/2016

PARTICULARS	NO. OF CONTRACTS	TURNOVER (RS. CR.)	PUT CALL RATIO
NSE Index Futures	4,81,279	23568	-
NSE Stock Futures	8,21,434	32842	-
NSE Index Options	54,70,286	2,87,164.36	-
NSE Stock Options	5,35,725	22337	0.58
NSE F&O Total Turnover	73,08,724	365,912	0.71
NSE Cash Turnover	-	22454	-
BSE Cash Turnover	-	3,700.15	-
Total Turnover	-	392066	-

FII Corner (F&O)

FII NET BUYING/SELLING & CHANGE IN OPEN INTEREST (Cr. Rupee)						
PARTICULARS	12/02/2016		11/02/2016		10/02/2016	
	Net Buying /Selling	Change In Open interest	Net Buying /Selling	Change In Open interest	Net Buying /Selling	Change In Open interest
Index Future	883	769	415	140	-418	330
Index option	-1145	1910	574	2223	407	2202
Stock Future	102	583	-265	-1395	-1269	-218
Stock option	-72	229	-76	65	-7	69
Total	-232	3491	648	1034	-1287	2383

Market Open Interest

ADDITION/REDUCTION IN MARKET OPEN INTEREST					
Contracts	12/02/2016	11/02/2016	10/02/2016	09/02/2016	08/02/2016
Index Futures	660	444	510	-733	362
Index Options	-86	-3253	-311	-421	-401
Stock Futures	3770	6665	8597	4629	3344
Stock Options	250	622	872	1198	692
F&O Total	4594	4478	9667.76	4673	3997.64

Nifty Option Open Interest Statistics

NIFTY OPTIONS HIGHEST ADDITION IN OPEN INTEREST						
Expiry	Strike	Option Type	Settlement Price	Volume	Open Interest	Change In OI
25-Feb-16	7000	CE	101.4	347536	3911175	1699575
25-Feb-16	6900	PE	74.6	371136	3495525	694950
25-Feb-16	7200	CE	33.15	443176	4176750	689925
25-Feb-16	7100	CE	60.45	424002	3280650	682125
25-Feb-16	6900	CE	157.95	112506	1409100	610800
25-Feb-16	7300	CE	16.35	341518	4885350	556200
25-Feb-16	6700	PE	29.15	244171	2141925	454500
25-Feb-16	6500	PE	12.3	127373	2231100	408150
31-Mar-16	6600	PE	108.55	14044	827850	289275
25-Feb-16	6700	CE	309.65	7903	349425	286125

NIFTY OPTIONS HIGHEST REDUCTION IN OPEN INTEREST						
Expiry	Strike	Option Type	Settlement Price	Volume	Open Interest	Change In OI
25-Feb-16	7500	CE	5.25	181976	5834400	-702675
25-Feb-16	7000	PE	115.5	284864	4544625	-701250
25-Feb-16	7700	CE	2.95	91274	3158925	-651750
25-Feb-16	7400	PE	419.3	19544	2950125	-584100
25-Feb-16	7100	PE	174.8	85708	3361575	-470700
25-Feb-16	7300	PE	325.8	20666	2518350	-442800
25-Feb-16	7200	PE	246.85	43730	3741000	-378075
25-Feb-16	7800	CE	2.7	72253	3150975	-339600
25-Feb-16	7600	CE	3.8	101876	5175225	-304275
25-Feb-16	7400	CE	8.65	251479	5215200	-271950

Stock Option Open Interest Statistics

STOCK OPTIONS WITH HIGHEST ADDITION IN OPEN INTEREST							
Symbol	Expiry	Strike	Option Type	Settl. Price	Volume	Open Interest	Change in OI
PNB	25-Feb-16	60	PE	0.55	867	2100000	2020000
TV18BRDCST	25-Feb-16	35	CE	1.75	319	1598000	1598000
JPASSOCIAT	25-Feb-16	7.5	CE	0.3	106	5664000	1536000
UNITECH	25-Feb-16	2.5	PE	0.05	57	2464000	1463000
GMRINFRA	25-Feb-16	7.5	PE	0.05	48	1443000	1170000
ADANIPOWER	25-Feb-16	25	CE	0.95	416	2280000	1140000
IDFC	25-Feb-16	40	CE	1	1015	1448700	1032900
VEDL	25-Feb-16	65	CE	2.6	1890	3432000	984000
RPOWER	25-Feb-16	42.5	CE	2	152	996000	972000
IFCI	25-Feb-16	22.5	CE	0.4	898	6660000	940000

STOCK OPTIONS WITH HIGHEST REDUCTION IN OPEN INTEREST							
Symbol	Expiry	Strike	Option Type	Settl. Price	Volume	Open Int.	Change in OI
PNB	25-Feb-16	65	PE	1.45	891	1024000	-1068000
UNITECH	25-Feb-16	5	CE	0.1	94	11781000	-847000
TATASTEEL	25-Feb-16	200	PE	3.5	3266	1756000	-764000
PNB	25-Feb-16	110	CE	0.05	304	1552000	-696000
JPASSOCIAT	25-Feb-16	7.5	PE	0.6	101	3840000	-672000
TATASTEEL	25-Feb-16	220	PE	10.4	1811	1464000	-620000
TATAMOTORS	25-Feb-16	300	CE	10.7	3866	1017000	-586500
IDEA	25-Feb-16	110	CE	3.3	783	831000	-537000
SBIN	25-Feb-16	170	CE	1.9	5353	5322000	-476000
DLF	25-Feb-16	95	CE	0.8	716	2235000	-465000

Disclosure

- The Research Analysts and /or Ashika Stock Broking Limited do hereby certify that all the views expressed in this research report accurately reflect their views about the subject issuer(s) or securities. Moreover, they also certify the followings:-
- The Research Analyst or Ashika Stock Broking Limited or his/its Associates or his/its relative, has any financial interest in the subject company(ies) covered in this report. **No**
- The Research Analyst or Ashika Stock Broking Limited or his/its Associates or his/its relative, have actual/beneficial ownership of 1% or more in the subject company, at the end of the month immediately preceding the date of the publication of the research report. **No**
- The Research Analyst or Ashika Stock Broking Limited or his/its Associates or his/its relatives has any material conflict of interest at the time of publication of the research report. **No**
- The Research Analyst or Ashika Stock Broking Limited or his/its Associates have received compensation for investment banking or merchant banking or brokerage services or for product other than for investment banking or merchant banking or brokerage services from the companies covered in this report in the past 12 months. **No**
- The Research Analyst or Ashika Stock Broking Limited or his/its Associates have managed or co managed in the previous 12 months any private or public offering of securities for the company(ies) covered in this report. **No**
- The Research Analyst or Ashika Stock Broking Limited or his/its Associates have received any compensation or other benefits from the company(ies) covered in this report or any third party in connection with the Research Report. **No**
- The Research Analyst has served as an officer, director or employee of the company(ies) covered in the research report. **No**
- The Research Analyst or Ashika Stock Broking Limited has been engaged in Market making activity of the company(ies) covered in the research report. **No**

Disclaimer

This report is for the personal information of the authorized recipient and does not construe to be any investment, legal or taxation advice to you. Ashika Stock Broking Ltd. is not soliciting any action based upon it. This report is not for public distribution and has been furnished to you solely for your information and should not be reproduced or redistributed to any other person in any form. The report is based upon information that we consider reliable, but we do not represent that it is accurate or complete, and it should not be relied upon such. Ashika Stock Broking Ltd. or any of its affiliates or employees shall not be in anyway responsible for any loss or damage that may arise to any person from any inadvertent error in the information contained in this report. Ashika Stock Broking Ltd., or any of its affiliates or employees do not provide, at any time, any express or implied warranty of any kind, regarding any matter pertaining to this report, including without limitation the implied warranties of merchantability, fitness for a particular purpose, and non-infringement. The recipients of this report should rely on their own investigations.