

Technical Report

Closing Brief

Trading for the week started on an upbeat note as key benchmark indices jumped as firmness in global stocks boosted sentiment on the domestic bourses. The broad market depicted strength. There were almost three gainers against every loser on BSE.

Technical Build up

- ❖ Bullish candle with decrease in volume
- ❖ Oversold price condition with buy crossover in oscillators.
- ❖ Lower band of Bollinger exist at 7031
- ❖ Crucial moving average of 20/50 SMA are at 7346 and 7578
- ❖ 200 SMA trend deciding level exist at 8022

Outlook for the day

Indian equity market made a strong comeback on Monday, after the disappointing performance last week and gained over two & half percent . Positive global cues boosted the market sentiment further supported by recovery in rupee against the US dollar. Traders seems to have covered short position before budget announcement two weeks from now. On the technical front Nifty formed bullish gap up candle taking support from the lower panel of the downward sloping channel line and the 200dma in weekly chart indicating positive chart structure. Now the previous swing high is placed at 7250-7275 which is likely to provide strong resistance for the market. On the oscillator front too extreme negative in short term seems to have turning in favor for the bulls and expectation of further pullback remains high. On the F&O front decrease in OI followed by increase in price indicates of short covering in Nifty Future. Indian VIX decreased by over 9% though PCR remained at elevated level of 0.80. On the option front lower strike price call option of 6900 & 7000 saw unwinding while fresh long addition were seen in higher strike price call option of 7300-7500 however put option of 7000-7200 also witnessed long addition bringing every reason for traders to remain cautious as Straddle strategy are being initiated in the market where traders are neutral on market direction and bullish on volatility before the crucial budget announcement.

World Indices	LTP	Daily Ch(Pts)	Daily Ch(%)
Dow Jones	15973	313	2.00
Nasdaq	4337	70	1.66
S&P 500	1864	35	1.95
FTSE 100	5824	116	2.04
DAX	9206	239	2.67
Hang Seng	19151	233	1.24
Nikkei	16139	116	0.73
Sensex	23554	568	2.47
Nifty	7162	182	2.61

Commodity /Forex	LTP	Daily Ch(Pts)	Daily Ch(%)
Gold (\$/Oz)	1208.00	-31.40	-2.53
Silver (\$/Oz)	15.37	-0.42	-2.66
Copper(USD/lb.)	207.70	4.80	2.37
Brent Crude(USD/bbl)	34.35	0.96	2.88
USD/INR	68.06	-0.17	-0.26
USD/YEN	114.62	0.02	0.02
USD/EUR	1.1174	0.0018	0.16

Support/Resistance levels for Indian Equity Indices					
	S1	S2	CMP	R1	R2
Sensex	23300	23035	23554	23715	23880
Nifty	7085	7005	7162	7210	7260
Nifty (Fut)	7085	7005	7161	7210	7260

Pivot Level	
Sensex	23458
Nifty	7134

US: US closed sharply higher on Friday as European and American bank stocks — as well as oil prices — bounced sharply, while investors digested U.S. economic data. Technically DJIA is presently trading at the 5th leg through Elliot wave count with negative divergence in oscillators.

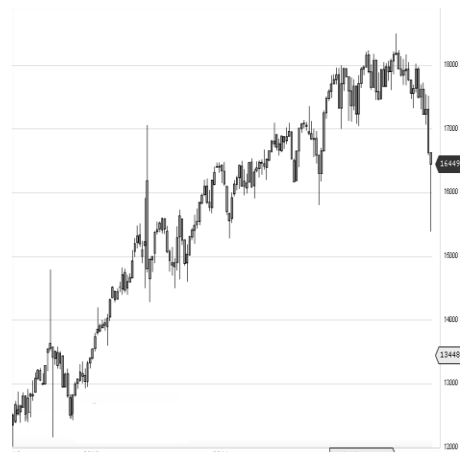


Increase in OI with Increase in Price (Long Buildup)

Symbol	Prev OI	Curr OI	OI Chg (%)	Curr Pr.	Pr.Chg (%)
TATAPO					
WER	2779	3616	30.1	60.2	6.2
BANKBAR					
ODA	14014	17106	22.1	139.75	24
ARVIND	1889	2195	16.2	287.15	4.7
TATASTEE					
L	12335	14207	15.2	246.8	13.2
JINDALST					
EL	6051	6849	13.2	62.7	13.3

Increase in OI with Decrease in Price (Short Buildup)

Symbol	Prev OI	Curr OI	OI Chg (%)	Curr Pr.	Pr.Chg (%)
WOCKPH					
ARMA	6997	8467	21	757.7	[0.5]
UBL	1516	1586	4.6	804.7	[0.7]
HDFC	30755	32162	4.6	1084.4	[0.1]
STAR	4660	4811	3.2	950	[1.7]
HINDUNI					
LVR	7088	7232	2	805.9	[1.0]



Nifty gained by 2.61% with Nifty future shaded 2.7 lakh shares in open interest and stock future added 239.9 Lakh shares in open interest.

- Nifty PCR increased to 0.80 from 0.77
- Total Nifty Calls shaded 21.3 lakh shares in open interest.
- Total Nifty Puts added 14.7 lakh shares in open interest.
- Maximum open interest (Nifty) in Calls for Jan series is at 7500 and 7000 put.
- FII's sold net Rs.1311.59 (provisional), while DIIs bought net Rs.1987.45 Cr in cash market.
- FII bought net Rs.2590.04 Cr in F&O
- Securities in Ban Period: INDAICEM, JISJALEQS & WOCKPHARMA

Nifty Tracker

PARTICULARS	15/02/2016	12/02/2016	11/02/2016	10/02/2016
Spot	7162.95	6980.95	6976.35	7215.7
% Change in Spot	2.61%	0.07%	-3.32%	-1.13%
Nifty(FUT) Feb	7161.45	6990	6993.45	7246.55
Nifty(FUT) Feb Vol.	204947	301936	296451	242379
Nifty(FUT) Feb - OI	20424450	20826075	19754250	18663375
Nifty(FUT) Mar	7179.15	7008.9	7011.55	7264.4
Nifty(FUT) Mar Vol.	14198	20883	20859	13898
Nifty(FUT) Mar - OI	2300400	2176800	1983450	1668000

Trade Statistics for 15/02/2016

PARTICULARS	NO. OF CONTRACTS	TURNOVER (RS. CR.)	PUT CALL RATIO
NSE Index Futures	3,51,401	17488	-
NSE Stock Futures	7,01,053	29164	-
NSE Index Options	40,59,054	2,14,023.97	-
NSE Stock Options	4,45,926	18830	0.49
NSE F&O Total Turnover	55,57,434	279,506	0.74
NSE Cash Turnover	-	18105	-
BSE Cash Turnover	-	3,031.74	-
Total Turnover	-	300643	-

FII Corner (F&O)

FII NET BUYING/SELLING & CHANGE IN OPEN INTEREST (Cr. Rupee)						
PARTICULARS	15/02/2016		12/02/2016		11/02/2016	
	Net Buying /Selling	Change In Open interest	Net Buying /Selling	Change In Open interest	Net Buying /Selling	Change In Open interest
Index Future	915	607	883	769	415	140
Index option	443	4615	-1145	1910	574	2223
Stock Future	1240	2091	102	583	-265	-1395
Stock option	-7	192	-72	229	-76	65
Total	2591	7505	-232	3491	648	1034

Market Open Interest

ADDITION/REDUCTION IN MARKET OPEN INTEREST					
Contracts	15/02/2016	12/02/2016	11/02/2016	10/02/2016	09/02/2016
Index Futures	-141	660	444	510	-733
Index Options	2335	-86	-3253	-311	-421
Stock Futures	-158	3770	6665	8597	4629
Stock Options	-802	250	622	872	1198
F&O Total	1234	4594	4478.41	9667.76	4673

Nifty Option Open Interest Statistics

NIFTY OPTIONS HIGHEST ADDITION IN OPEN INTEREST						
Expiry	Strike	Option Type	Settlement Price	Volume	Open Interest	Change In OI
25-Feb-16	7100	PE	63.95	280660	5043225	1681650
25-Feb-16	7000	PE	36	313129	5422650	878025
25-Feb-16	7150	PE	82.25	16809	526200	375225
31-Mar-16	7200	PE	218.6	9468	1367600	230700
25-Feb-16	7400	CE	12.95	236378	5441025	225825
25-Feb-16	7050	PE	47.9	19164	367050	223275
25-Feb-16	7300	CE	31.1	296466	5048025	162675
31-Mar-16	7500	CE	73.05	17894	1389975	147525
31-Mar-16	7600	CE	49.2	17510	1318950	117225
25-Feb-16	6900	PE	20.2	230543	3606375	110850

NIFTY OPTIONS HIGHEST REDUCTION IN OPEN INTEREST						
Expiry	Strike	Option Type	Settlement Price	Volume	Open Interest	Change In OI
25-Feb-16	7000	CE	190.85	91573	2732250	-1178925
25-Feb-16	6900	CE	276.75	22092	908325	-500775
25-Feb-16	7400	PE	250.2	15423	2585700	-364425
25-Feb-16	7800	CE	1.5	35062	2810250	-340725
31-Mar-16	7000	PE	144.5	17331	2851675	-287625
25-Feb-16	6800	PE	11.85	163080	3772725	-283725
25-Feb-16	7600	CE	3.1	108744	4913625	-261600
25-Feb-16	6600	PE	4.15	45950	1462800	-208800
25-Feb-16	7300	PE	170.05	23921	2324325	-194025
25-Feb-16	6300	PE	1.9	6683	355200	-179625

Stock Option Open Interest Statistics

STOCK OPTIONS WITH HIGHEST ADDITION IN OPEN INTEREST							
Symbol	Expiry	Strike	Option Type	Settl. Price	Volume	Open Interest	Change in OI
JPASSOCIAT	25-Feb-16	10	CE	0.05	346	24816000	8928000
BANKBARODA	25-Feb-16	130	PE	4.35	2292	3013200	2576100
BANKBARODA	25-Feb-16	120	PE	2.2	2657	2879900	2414900
GMRINFRA	25-Feb-16	12.5	CE	0.25	159	8775000	1911000
VEDL	25-Feb-16	65	PE	0.85	1614	3752000	1412000
BANKBARODA	25-Feb-16	110	PE	1.2	2421	2182400	1407400
VEDL	25-Feb-16	70	PE	1.7	1339	2324000	1392000
BANKBARODA	25-Feb-16	125	PE	3.15	1387	1751500	1320600
BANKBARODA	25-Feb-16	100	PE	0.65	1567	2151400	1249300
TATASTEEL	25-Feb-16	220	PE	1.95	2404	2668000	1204000

STOCK OPTIONS WITH HIGHEST REDUCTION IN OPEN INTEREST							
Symbol	Expiry	Strike	Option Type	Settl. Price	Volume	Open Int.	Change in OI
SBIN	25-Feb-16	160	CE	10.35	3574	1838000	-1808000
ASHOKLEY	25-Feb-16	90	CE	2.35	1735	3584000	-1750000
ASHOKLEY	25-Feb-16	85	CE	5.5	511	1386000	-1372000
VEDL	25-Feb-16	65	CE	10.65	990	2180000	-1252000
UNITECH	25-Feb-16	5	CE	0.15	131	10703000	-1078000
VEDL	25-Feb-16	70	CE	6.5	2385	2544000	-1008000
HINDALCO	25-Feb-16	65	CE	3.75	725	745000	-1005000
ADANIPOWER	25-Feb-16	25	CE	2	138	1280000	-1000000
DLF	25-Feb-16	85	CE	6.95	611	1045000	-820000
SBIN	25-Feb-16	170	CE	4.85	6542	4512000	-810000

Disclosure

- The Research Analysts and /or Ashika Stock Broking Limited do hereby certify that all the views expressed in this research report accurately reflect their views about the subject issuer(s) or securities. Moreover, they also certify the followings:-
- The Research Analyst or Ashika Stock Broking Limited or his/its Associates or his/its relative, has any financial interest in the subject company(ies) covered in this report. **No**
- The Research Analyst or Ashika Stock Broking Limited or his/its Associates or his/its relative, have actual/beneficial ownership of 1% or more in the subject company, at the end of the month immediately preceding the date of the publication of the research report. **No**
- The Research Analyst or Ashika Stock Broking Limited or his/its Associates or his/its relatives has any material conflict of interest at the time of publication of the research report. **No**
- The Research Analyst or Ashika Stock Broking Limited or his/its Associates have received compensation for investment banking or merchant banking or brokerage services or for product other than for investment banking or merchant banking or brokerage services from the companies covered in this report in the past 12 months. **No**
- The Research Analyst or Ashika Stock Broking Limited or his/its Associates have managed or co managed in the previous 12 months any private or public offering of securities for the company(ies) covered in this report. **No**
- The Research Analyst or Ashika Stock Broking Limited or his/its Associates have received any compensation or other benefits from the company(ies) covered in this report or any third party in connection with the Research Report. **No**
- The Research Analyst has served as an officer, director or employee of the company(ies) covered in the research report. **No**
- The Research Analyst or Ashika Stock Broking Limited has been engaged in Market making activity of the company(ies) covered in the research report. **No**

Disclaimer

This report is for the personal information of the authorized recipient and does not construe to be any investment, legal or taxation advice to you. Ashika Stock Broking Ltd. is not soliciting any action based upon it. This report is not for public distribution and has been furnished to you solely for your information and should not be reproduced or redistributed to any other person in any form. The report is based upon information that we consider reliable, but we do not represent that it is accurate or complete, and it should not be relied upon such. Ashika Stock Broking Ltd. or any of its affiliates or employees shall not be in anyway responsible for any loss or damage that may arise to any person from any inadvertent error in the information contained in this report. Ashika Stock Broking Ltd., or any of its affiliates or employees do not provide, at any time, any express or implied warranty of any kind, regarding any matter pertaining to this report, including without limitation the implied warranties of merchantability, fitness for a particular purpose, and non-infringement. The recipients of this report should rely on their own investigations.