

Technical Report

Closing Brief

After registering strong gains during the previous trading session, key benchmark indices moved lower. The broad market depicted weakness. Stocks of public sector banks and index heavyweights Reliance Industries (RIL) and ITC led losses for key benchmark indices.

Technical Build up

- ❖ Bearish candle with decrease in volume
- ❖ Oversold price condition with Sell crossover in oscillators.
- ❖ Lower band of Bollinger exist at 6990
- ❖ Crucial moving average of 20/50 SMA are at 7331 and 7563
- ❖ 200 SMA trend deciding level exist at 8016

Outlook for the day

Indian equity market did not sustain despite strong global cues due to increased oil price and rising USDINR after news that the Saudi Oil Minister agreed to freeze oil Production. On the technical front Nifty formed bearish engulfing candle with decrease in volume while support from the lower panel of the downward sloping channel line and the 200dma in weekly chart still remains. Now the previous swing high is placed at 7250-7275 which is likely to provide strong resistance for the market. On the oscillator front too extreme negative in short term seems to have turning in favor for the bulls and expectation of further pullback remains high. On the F&O front increase in OI followed by decrease in price indicates of short buildup in Nifty Future. Indian VIX surged by over 3% while PCR remained at elevated level of 0.78. On the option front OI was evenly distributed from 7000-7300 strike price call option however 7200 strike price call option saw the maximum concentration. On the put side 7000 strike price stands tall with the maximum concentration. Hence traders seems to continue to maintain their stance of neutral market direction & bullish on volatility with straddle strategy in place

World Indices	LTP	Daily Ch(Pts)	Daily Ch(%)
Dow Jones	16196	222	1.39
Nasdaq	4435	98	2.27
S&P 500	1895	30	1.65
FTSE 100	5862	37	0.65
DAX	9135	-71	-0.78
Hang Seng	19276	154	0.81
Nikkei	16005	-48	-0.30
Sensex	23191	-362	-1.54
Nifty	7048	-114	-1.60

Commodity /Forex	LTP	Daily Ch(Pts)	Daily Ch(%)
Gold (\$/Oz)	1202.70	-5.50	-0.46
Silver (\$/Oz)	15.27	-0.06	-0.42
Copper(USD/lb.)	205.15	0.05	0.02
Brent Crude(USD/bbl)	32.68	0.50	1.55
USD/INR	68.38	0.32	0.47
USD/YEN	114.02	-0.05	-0.04
USD/EUR	1.1139	-0.0005	-0.04

Support/Resistance levels for Indian Equity Indices					
	S1	S2	CMP	R1	R2
Sensex	22965	22785	23191	23545	23900
Nifty	6980	6925	7048	7155	7265
Nifty (Fut)	6985	6930	7054	7160	7270

Pivot Level	
Sensex	23349
Nifty	7096

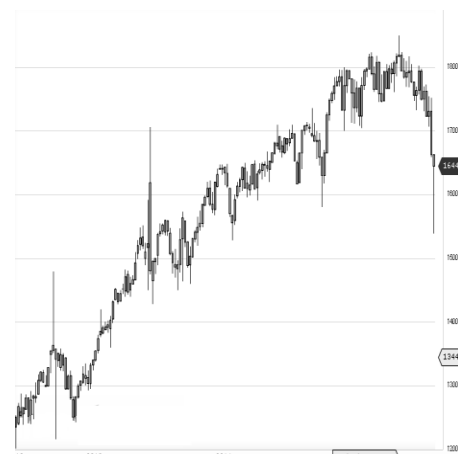
US: US closed more than 1 percent higher Tuesday, helped by gains in consumer discretionary and financials, as well as positive developments in China. Technically DJIA is presently trading at the 5th leg through Elliot wave count with negative divergence in oscillators.

Ashika Stock Broking Limited



Increase in OI with Increase in Price (Long Buildup)					
Symbol	Prev OI	Curr OI	OI Chg (%)	Curr Pr.	Pr.Chg (%)
ADANIPO					
WER	3003	3124	4	27.3	2.4
CONCOR	881	904	2.6	1158.15	0.1

Increase in OI with Decrease in Price (Short Buildup)					
Symbol	Prev OI	Curr OI	OI Chg (%)	Curr Pr.	Pr.Chg (%)
CAIRN	3461	3903	12.8	124.75	[0.1]
ORIENTB					
ANK	3481	3845	10.5	81.7	[5.6]
SYNDIBA					
NK	2027	2236	10.3	51.4	[7.3]
RECLTD	5800	6397	10.3	157.45	[1.0]
STAR	4740	5217	10.1	886.55	[7.9]



Nifty declined by 1.60% with Nifty future added 13.1 lakh shares in open interest and stock future added 356.1 Lakh shares in open interest.

- Nifty PCR decreased to 0.78 from 0.80
- Total Nifty Calls shaded 23.4 lakh shares in open interest.
- Total Nifty Puts shaded 5.2 lakh shares in open interest.
- Maximum open interest (Nifty) in Calls for Jan series is at 7500 and 7000 put.
- FII's sold net Rs.964.19 (provisional), while DIIs bought net Rs.590.73 Cr in cash market.
- FII sold net Rs.318.20 Cr in F&O
- Securities in Ban Period: INDAICEM, JISJALEQS & WOCKPHARMA

Nifty Tracker

PARTICULARS	16/02/2016	15/02/2016	12/02/2016	11/02/2016
Spot	7048.25	7162.95	6980.95	6976.35
% Change in Spot	-1.60%	2.61%	0.07%	-3.32%
Nifty(FUT) Feb	7054.1	7161.45	6990	6993.45
Nifty(FUT) Feb Vol.	227590	204947	301936	296451
Nifty(FUT) Feb - OI	21186750	20424450	20826075	19754250
Nifty(FUT) Mar	7071.4	7179.15	7008.9	7011.55
Nifty(FUT) Mar Vol.	18136	14198	20883	20859
Nifty(FUT) Mar - OI	2825850	2300400	2176800	1983450

Trade Statistics for 16/02/2016

PARTICULARS	NO. OF CONTRACTS	TURNOVER (RS. CR.)	PUT CALL RATIO
NSE Index Futures	3,76,216	18742	-
NSE Stock Futures	6,72,264	27961	-
NSE Index Options	49,82,498	2,63,788.45	-
NSE Stock Options	4,01,397	17243	0.58
NSE F&O Total Turnover	64,32,377	327,735	0.79
NSE Cash Turnover	-	14973	-
BSE Cash Turnover	-	2,604.51	-
Total Turnover	-	345313	-

FII Corner (F&O)

FII NET BUYING/SELLING & CHANGE IN OPEN INTEREST (Cr. Rupee)						
PARTICULARS	16/02/2016		15/02/2016		12/02/2016	
	Net Buying /Selling	Change In Open interest	Net Buying /Selling	Change In Open interest	Net Buying /Selling	Change In Open interest
Index Future	1030	740	915	607	883	769
Index option	-1693	-902	443	4615	-1145	1910
Stock Future	452	-1398	1240	2091	102	583
Stock option	-107	104	-7	192	-72	229
Total	-318	-1456	2591	7505	-232	3491

Market Open Interest

ADDITION/REDUCTION IN MARKET OPEN INTEREST					
Contracts	16/02/2016	15/02/2016	12/02/2016	11/02/2016	10/02/2016
Index Futures	670	-141	660	444	510
Index Options	-636	2335	-86	-3253	-311
Stock Futures	1104	-158	3770	6665	8597
Stock Options	557	-802	250	622	872
F&O Total	1695	1234	4594.02	4478.41	9667.76

Nifty Option Open Interest Statistics

NIFTY OPTIONS HIGHEST ADDITION IN OPEN INTEREST						
Expiry	Strike	Option Type	Settlement Price	Volume	Open Interest	Change In OI
25-Feb-16	7200	CE	29.45	592372	5063475	855975
25-Feb-16	7100	CE	63.8	313651	4035975	850950
25-Feb-16	7300	CE	11.5	424443	5481225	433200
25-Feb-16	7050	CE	86.6	11390	513675	382275
25-Feb-16	7000	CE	117.75	63737	3093900	361650
25-Feb-16	7150	CE	43.75	34887	646800	266475
25-Feb-16	6900	PE	41.95	265162	3818850	212475
25-Feb-16	6600	PE	8.6	46509	1634475	171675
25-Feb-16	6500	PE	5	29343	2308200	166200
31-Mar-16	6700	PE	94.1	8653	1064850	151050

NIFTY OPTIONS HIGHEST REDUCTION IN OPEN INTEREST						
Expiry	Strike	Option Type	Settlement Price	Volume	Open Interest	Change In OI
25-Feb-16	7100	PE	114.1	442260	4607400	-435825
25-Feb-16	7500	CE	2.5	192044	5484750	-413775
25-Feb-16	8000	CE	0.85	8466	3205500	-261375
25-Feb-16	7700	CE	1.2	43331	2825400	-214875
25-Feb-16	7200	PE	176.95	204919	3545850	-184200
31-Mar-16	8200	CE	5.45	6551	1196250	-173625
25-Feb-16	8000	PE	945.3	2364	776700	-143550
25-Feb-16	7800	CE	1.15	35722	2670150	-140100
25-Feb-16	7400	PE	353.5	13957	2465850	-119850
25-Feb-16	7300	PE	256.5	34305	2209425	-114900

Stock Option Open Interest Statistics

STOCK OPTIONS WITH HIGHEST ADDITION IN OPEN INTEREST							
Symbol	Expiry	Strike	Option Type	Settl. Price	Volume	Open Interest	Change in OI
SBIN	25-Feb-16	170	CE	1.35	8084	7224000	2712000
SBIN	25-Feb-16	165	CE	2.25	3697	2740000	1520000
SBIN	25-Feb-16	160	CE	3.75	3446	2970000	1132000
RCOM	25-Feb-16	55	CE	1.1	1627	4312000	1080000
HDIL	25-Feb-16	65	CE	1.1	669	2436000	954000
RCOM	25-Feb-16	50	CE	2.55	406	1776000	944000
SBIN	25-Feb-16	180	CE	0.55	5864	8510000	894000
ASHOKLEY	25-Feb-16	90	CE	1.4	1306	4459000	875000
ICICIBANK	25-Feb-16	210	CE	1.2	3150	3967800	843200
ICICIBANK	25-Feb-16	205	CE	2	2299	2028100	807500

STOCK OPTIONS WITH HIGHEST REDUCTION IN OPEN INTEREST							
Symbol	Expiry	Strike	Option Type	Settl. Price	Volume	Open Int.	Change in OI
JPASSOCIAT	25-Feb-16	10	CE	0.05	208	23328000	-1488000
BANKBARODA	25-Feb-16	130	PE	5.6	2523	1912700	-1100500
JISLJALEQS	25-Feb-16	70	CE	0.05	164	1576000	-1048000
IFCI	25-Feb-16	22.5	CE	0.3	390	6080000	-960000
RCOM	25-Feb-16	62.5	CE	0.3	270	1280000	-640000
BANKBARODA	25-Feb-16	120	PE	2.55	2024	2253700	-626200
BANKBARODA	25-Feb-16	140	PE	11.4	486	322400	-604500
ASHOKLEY	25-Feb-16	85	CE	3.85	178	945000	-441000
BANKBARODA	25-Feb-16	125	PE	3.8	993	1373300	-378200
ASHOKLEY	25-Feb-16	80	PE	0.45	492	2506000	-371000

Disclosure

- The Research Analysts and /or Ashika Stock Broking Limited do hereby certify that all the views expressed in this research report accurately reflect their views about the subject issuer(s) or securities. Moreover, they also certify the followings:-
- The Research Analyst or Ashika Stock Broking Limited or his/its Associates or his/its relative, has any financial interest in the subject company(ies) covered in this report. **No**
- The Research Analyst or Ashika Stock Broking Limited or his/its Associates or his/its relative, have actual/beneficial ownership of 1% or more in the subject company, at the end of the month immediately preceding the date of the publication of the research report. **No**
- The Research Analyst or Ashika Stock Broking Limited or his/its Associates or his/its relatives has any material conflict of interest at the time of publication of the research report. **No**
- The Research Analyst or Ashika Stock Broking Limited or his/its Associates have received compensation for investment banking or merchant banking or brokerage services or for product other than for investment banking or merchant banking or brokerage services from the companies covered in this report in the past 12 months. **No**
- The Research Analyst or Ashika Stock Broking Limited or his/its Associates have managed or co managed in the previous 12 months any private or public offering of securities for the company(ies) covered in this report. **No**
- The Research Analyst or Ashika Stock Broking Limited or his/its Associates have received any compensation or other benefits from the company(ies) covered in this report or any third party in connection with the Research Report. **No**
- The Research Analyst has served as an officer, director or employee of the company(ies) covered in the research report. **No**
- The Research Analyst or Ashika Stock Broking Limited has been engaged in Market making activity of the company(ies) covered in the research report. **No**

Disclaimer

This report is for the personal information of the authorized recipient and does not construe to be any investment, legal or taxation advice to you. Ashika Stock Broking Ltd. is not soliciting any action based upon it. This report is not for public distribution and has been furnished to you solely for your information and should not be reproduced or redistributed to any other person in any form. The report is based upon information that we consider reliable, but we do not represent that it is accurate or complete, and it should not be relied upon such. Ashika Stock Broking Ltd. or any of its affiliates or employees shall not be in anyway responsible for any loss or damage that may arise to any person from any inadvertent error in the information contained in this report. Ashika Stock Broking Ltd., or any of its affiliates or employees do not provide, at any time, any express or implied warranty of any kind, regarding any matter pertaining to this report, including without limitation the implied warranties of merchantability, fitness for a particular purpose, and non-infringement. The recipients of this report should rely on their own investigations.