

Equity	Latest	% Chg	NSE Sect. Indices	Latest	% Chg
Nifty	6022	0.36	CNX IT	9718	1.11
Sensex	20261	0.24	BANK NIFTY	10232	0.40
DowJones	15440	(0.03)	S&P CNX 500	4672	0.42
Nasdaq	4012	(0.50)	CNX FMCG	16679	(1.01)
Hangseng	21398	0.61	CNX REALTY	155	1.74
Shanghai	2033	(0.82)	CNX AUTO	5022	1.69
Nikkei	14203	0.16	CNX ENERGY	7461	0.20
Strait Times	2984	0.81	CNX PHARMA	7741	0.05
Kospi	1908	0.91			
Taiwan	8308	0.53			
FTSE	6458	0.13			
CAC	4118	0.01			
DAX	9116	(0.13)			

Advances / Declines	BSE	NSE
Advances	1460	846
Declines	1110	561
Unchanged	151	81
Total	2721	1488

Nifty Gainers		
Company	Price(Rs)	Chg(%)
RANBAXY	340.45	5.75
TATASTEEL	360.50	5.12
DLF	137.80	2.76
TATAMOTORS	355.00	2.65
M&M	876.00	2.61

Nifty Losers		
Company	Price(Rs)	Chg(%)
ITC	318.75	(1.89)
BHEL	160.40	(1.50)
PNB	558.90	(1.22)
MARUTI	1606.00	(0.84)
HCLTECH	1390.90	(0.78)

Vol. Shockers	Last Day (Lakh)	2 Wk Avg. (Lakh)	Vol. Ch. (Times)
Kansai Nerolac	1.43	0.00	331
Godfrey Phil	1.32	0.01	193
LG Balakrishnan	4.22	0.03	154
Cadila Health	2.25	0.19	12
Selan Expl-\$	1.87	0.18	11

Indian Forex	Closing	Chg	% Chg
USD/INR	62.453	(0.229)	(0.37)
GBP/INR	102.010	0.033	0.03
EUR/INR	84.355	(0.426)	(0.50)
JPY/INR	61.580	(0.540)	(0.87)

Precious Metal	Closing	Chg (Rs.)
Gold (Rs/10gm)	29890	190
Silver (Rs/1kg)	43992	363

Commodities	Price	% Chg.
Crude (US\$/BBL)	97.5	(0.11)
Brent (US\$/BBL)	106.3	0.26
Gold (US/oz)	1256.6	0.14
Silver (US\$/oz)	19.9	1.63
Copper (US\$/MT)	7096.0	(0.15)
Alum (US\$/MT)	1663.0	1.31
Zinc(US\$/MT)	1977.0	0.61

ADR	Cl. Values	% Chg.
ICICI Bank	31.58	(1.06)
HDFC Bank	31.33	(0.15)
Infosys	56.53	(0.55)
Sterlite Inds.	6.22	0.00
Dr. Deddy's Labs	41.73	(0.44)
Wipro	12.54	(0.15)
Tata Motors	28.01	0.21

## Market Sensor

US market fell mildly on Wednesday, with the S&P 500 finishing the session near unchanged, as a better-than-expected report on the service sector helped neutralize another that had companies adding slightly fewer employees to their payrolls than anticipated in January. Dow Jones Industrial Average was down 0.03% or 5.01 points at 15440.23. Nasdaq Composite was down 0.50% or 19.97 points at 4011.55. Standard & Poor's 500 was down 0.20% or 3.56 points at 1751.64.

Indian market recovered yet again after HSBC service PMI data for the month of January being better than expected. Nifty ended the previous trading session with a gain of 0.36% or 21.50 points at 6022.40. On Tuesday's trading session, FII's sold net Rs.576.2 Cr in cash market and sold net Rs.333.26 in derivative segment. Whereas, DII bought net Rs.815.23 Cr in cash segment.

**Coming to today's trade day Nifty to remain volatile. Crucial intraday support in Nifty exists at 5970 followed by 5930 while resistance is seen at 6085 followed by 6130.**

## Global News

❖ Companies added fewer workers than projected in January as colder-than-normal weather limited progress in the U.S. job market, a private report based on payrolls showed. (Bloomberg)

❖ Traders who anticipated a year when riskier bets would pay off are overhauling their foreign-exchange positions after an emerging-markets rout led to the biggest currency-fund losses to start the year since 2004. (Bloomberg)

❖ Service industries expanded more than forecast in January as the biggest part of the U.S. economy overcame the effects of snow and freezing temperatures to boost hiring by the most in more than three years. (Bloomberg)

❖ Mario Draghi's habit of springing surprises means that few can say what he'll do when European Central Bank officials decide on monetary policy. (Bloomberg)

## Economic News

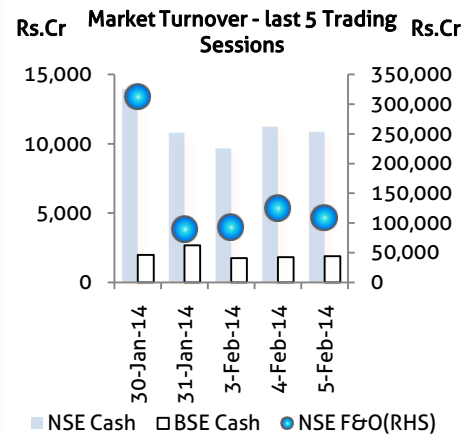
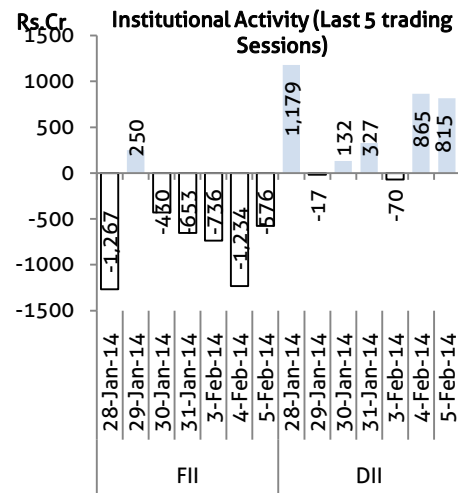
- ❖ Gold importers may get some relief soon as the government proposes to announce a cut in import duties in its ensuing vote on account session. (BS)
- ❖ The mines bill, which proposes sharing of miners' profits with the project-affected people, is all set to lapse as it is not among the 39 bills listed to be tabled in the Lok Sabha in this session. (BS)
- ❖ Hundreds of people from Mumbai and adjoining areas have been thronging Mantralaya to submit forms for a low-cost housing scheme, which the Chief Minister's Office said did not exist. (BS)
- ❖ India cannot afford fossil fuel subsidies in perpetuity and there is clear understanding that these must go, a top Finance Ministry official has said. (BS)
- ❖ Services, the biggest sector of India's economy, contracted for the seventh month in a row in January, showed widely-tracked HSBC purchasing managers' index (PMI). (BS)
- ❖ Telecom spectrum auction entered the third day with eight companies in fray for two sets of airwaves frequencies that can be used for 4G services. (BS)
- ❖ The government said it has approved Rs 17,630 crore projects in the port sector to augment the capacity of major ports by about 151 million tonnes per annum (MTPA).
- ❖ A Cabinet panel is likely to consider a Rs 10,141-crore proposal of Vodafone to buy out minority stake in its Indian arm on Thursday.

## Domestic News

- ❖ Idea Cellular has been the biggest gainer of mobile number portability with net additions of 80.88 lakh users, while Reliance Communications lost 60.13 lakh subscribers on net basis till December 31. (BS)
- ❖ Bharat Heavy Electricals Ltd (BHEL), India's largest power equipment manufacturer, posted a 41.2% decline in net profit, its sixth straight drop, during the third quarter ended December. (BS)
- ❖ Original equipment manufacturers (OEMs) in the automobile sector are facing a second straight year of weak demand, yet the heat of competition is forcing them to spend more on product development and technology. (BS)
- ❖ Auto major Tata Motors unveiled a concept compact sports utility vehicle Nexon along with another concept car Connect Next, giving a glimpse of its future direction in terms of technologies, as it bids to make up lost ground in passenger vehicles market. (BS)
- ❖ Bill Gates has reportedly taken over a bigger role in Microsoft as technology advisor to Microsoft's new CEO Satya Nadella, after he stepped down as the company's chairman. (BS)
- ❖ SKS Microfinance Limited is planning to raise Rs 400 crore through QIP route in the next fiscal by diluting a maximum of 20 per cent stake. (BS)
- ❖ Realty firm Kolte-Patil Developers Ltd has bought 34 acres of land in Pune for Rs 350 crore for constructing a housing project. (BS)
- ❖ Country's largest two-wheeler maker Hero MotoCorp unveiled two new 100cc bikes -- Splendor Pro Classic and Passion TR -- which will hit the Indian markets in next two months. (BS)

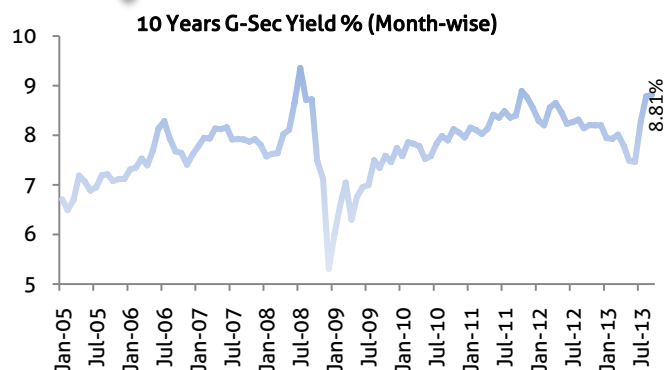
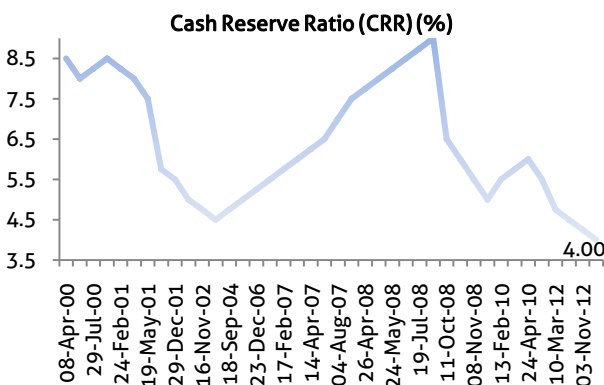
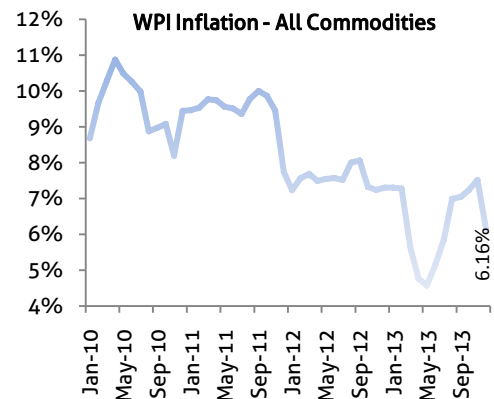
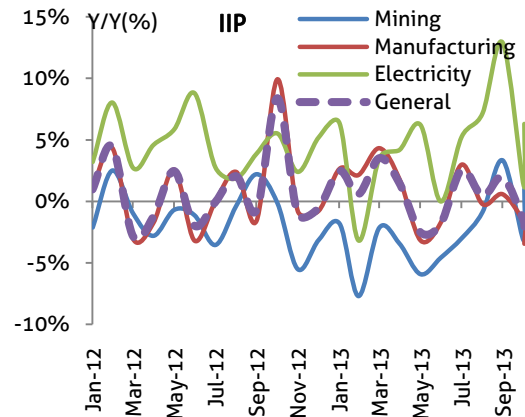
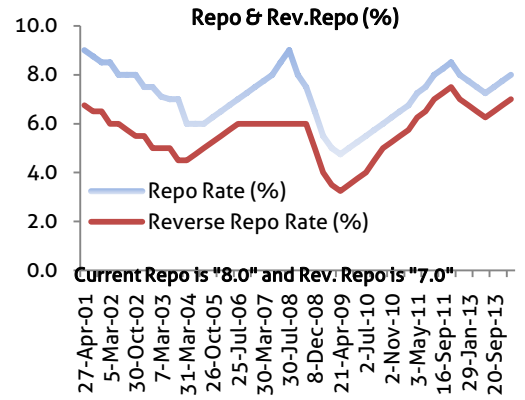
Global Forex	Closing	Chg	% Chg
EUR-USD	1.3534	0.0001	0.01
GBP-USD	1.6317	0.0008	0.05
USD-JPY	101.42	(0.03)	(0.03)

Bond Markets	Closing	Chg
10-yr bond	8.93	-2.2 bps
Interbank call	8.02	25.0 bps



## Domestic News (Cont...)

- ❖ Buoyed by good response to its Vespa brand of scooters in India, Italian two-wheeler maker Piaggio is planning to launch a new scooter in the country soon. (BS)
- ❖ SKS Microfinance Limited, the only listed entity in Indian microfinance space, has decided to raise a capital of Rs 400 crore in FY15 by diluting equity up to 20% of the pre-issue capital. (BS)
- ❖ Drug major Venus Remedies said it has got good manufacturing practices (GMP) certification from Indonesia for its unit located at Baddi in Himachal Pradesh. (BS)
- ❖ Ranbaxy Laboratories, India's biggest generic drugmaker by revenue, reported a narrower net loss in the latest quarter helped by ramped-up sales of two acne drugs in the United States. (BS)
- ❖ Honda Motorcycle & Scooter India (HMSI) will invest about Rs 1,100 crore to set up its fourth facility in Ahmedabad for manufacturing scooters. (BS)
- ❖ Driven by a strong show on the exports front, Bharat Forge posted revenue growth of 23.7% year on year to Rs 832 crore. While domestic revenues declined 7% to Rs 360 crore due to slowdown witnessed in commercial vehicle sales, export sales surged 54.5% to Rs 480 crore. Good traction in European markets as well as Asia Pacific and favourable currency also helped bring in the gains. Purchase of commercial vehicles before the emission norms take affect in 2014 helped the company report a 90% growth in that market. (BS)
- ❖ Tata Power plans to keep up with its annual investment of Rs 1,500 crore in renewable energy, even as the company's network is being eroded by its flagship coal-based project in Mundra. (BS)
- ❖ India's car market leader Maruti Suzuki India unveiled two concept models -- sedan Ciaz and crossover SX4 S-Cross -- as it looks to enhance its position in the bigger sedan segment going forward. (BS)
- ❖ With a new range of products completing its commercial vehicles (CV) portfolio, Hinduja flagship firm Ashok Leyland is aiming for about 30% of the market share in India in the next three to four years. (BS)
- ❖ Essar has shut down all units at the UK's No. 2 refinery due to a steam supply issue on Tuesday and said it did not yet have an estimate for when the plant could resume operations. (BS)



## Bulk Deal - NSE

Date	Security Name	Client Name	Buy/Sell	Traded Qty.	Price
5-Feb-14	Godfrey Phillips Ltd.	IDFC PREMIER EQUITY FUND	BUY	125000	2760
5-Feb-14	Godfrey Phillips Ltd.	THE ROYAL BANK OF SCOTLAND PLC AS TRUSTEE OF JUPITER INDIA	SELL	99524	2766.66
5-Feb-14	Visa Steel Limited	A P TRADING & FINANCE COMPANY LTD	SELL	1000000	16.4
5-Feb-14	Visa Steel Limited	LTS INVESTMENT FUND LTD	BUY	993000	16.4
5-Feb-14	Winsome Yarns Limited	ANKUR AGENCIES PVT. LTD.	SELL	500000	4.8

## Bulk Deal - BSE

Date	Security Name	Client Name	Buy/Sell	Traded Qty.	Price
5-Feb-14	Godfrey Phil	IDFC PREMIER EQUITY FUND	B	125,000	2760
5-Feb-14	Godfrey Phil	THE ROYAL BANK OF SCOTLAND PLC AS TRUSTEE OF JUPITER INDIA FUND	S	85,640	2760
5-Feb-14	LG Balakrishnan	THE INTERNATIONAL FINANCE CORPORATION	S	405,869	281.01
5-Feb-14	LG Balakrishnan	RELIANCE MUTUAL FUND	B	400,000	281
5-Feb-14	Alliance Integrat	ALLIANCE INTEGRATED METALIKS LIMITED	B	175,100	155

## Corporate Actions

Scrip Code	Scrip Name	Ex-Date	Purpose	Record Date
524348	Aarti Drugs	05-Feb-14	2nd Interim Dividend - Rs.4.50	06-Feb-14
532922	Edelweiss Financial	05-Feb-14	Interim Dividend - Rs.0.55	06-Feb-14
532947	IRB Infra	05-Feb-14	2nd Interim Dividend - Rs.2.00	06-Feb-14
524208	Aarti Inds	06-Feb-14	2nd Interim Dividend - Rs.1.25	08-Feb-14
505010	Automotive Axle	06-Feb-14	Final Dividend - Rs.2.00	-
532525	Bank of Maharashtra	06-Feb-14	Interim Dividend - Rs.1.00	07-Feb-14
517544	Centum Elect	06-Feb-14	Interim Dividend - Rs.1.00	07-Feb-14
511243	CHOLAFIN	06-Feb-14	Interim Dividend - Rs.2.50	08-Feb-14
532347	Helios & Matheson-\$	06-Feb-14	Dividend - Rs.5.00	-
532926	Jyothy Lab	06-Feb-14	Interim Dividend - Rs.1.00	07-Feb-14
531642	Marico	06-Feb-14	2nd Interim Dividend - Rs.1.00	07-Feb-14
530047	Rai Saheb Rekh	06-Feb-14	BONUS 2:1	07-Feb-14
522034	Shanthi Gears	06-Feb-14	Interim Dividend - Rs.1.00	07-Feb-14
517385	SYMPHONY	06-Feb-14	Interim Dividend - Rs.2.00	07-Feb-14
519105	AVT Nat Products	07-Feb-14	Interim Dividend - Rs.0.30	10-Feb-14
500103	BHEL	07-Feb-14	Interim Dividend - Rs.-	10-Feb-14
532424	Godrej Cons	07-Feb-14	3rd Interim Dividend - Rs.1.00	10-Feb-14
532810	Power Finance	07-Feb-14	Interim Dividend - Rs.8.80	10-Feb-14
532155	Gail India	10-Feb-14	Interim Dividend - Rs.-	11-Feb-14
532240	India Nippon	10-Feb-14	Interim Dividend - Rs.4.00	11-Feb-14
532388	IOB	10-Feb-14	Interim Dividend - Rs.0.70	11-Feb-14
500460	Mukand	10-Feb-14	Right1:1	11-Feb-14

## Global Economic Calendar

Date	Curr.	Event	Actual	Forecast	Previous
2/3/2014	EUR	Manufacturing PMI		53.9	53.9
2/3/2014	GBP	Manufacturing PMI		57	57.3
2/3/2014	USD	ADP Nonfarm Employment Change			238K
2/3/2014	USD	Construction Spending (MoM)		0.20%	1.00%
2/3/2014	USD	ISM Manufacturing PMI		56	56.5
2/4/2014	EUR	PPI (MoM)		0.10%	-0.10%
2/4/2014	USD	Factory Orders (MoM)		-1.60%	1.80%
2/5/2014	CNY	Chinese HSBC Services PMI			50.9
2/5/2014	EUR	Retail Sales (MoM)		-0.50%	1.40%
2/5/2014	USD	MBA 30-Year Mortgage Rate			4.52%
2/5/2014	USD	ADP Nonfarm Employment Change		180K	238K
2/5/2014	USD	Services PMI			56.6
2/5/2014	USD	ISM Non-Manufacturing PMI		53.8	53
2/6/2014	GBP	BoE QE Total			375B
2/6/2014	GBP	Interest Rate Decision		0.50%	0.50%
2/6/2014	EUR	Interest Rate Decision		0.25%	0.25%
2/6/2014	USD	Continuing Jobless Claims		2,995K	2,991K
2/6/2014	USD	Initial Jobless Claims		335K	348K
2/6/2014	USD	Nonfarm Productivity (QoQ)		2.50%	3.00%
2/6/2014	USD	Trade Balance		-36.10B	-34.30B
2/7/2014	CNY	Chinese HSBC Services PMI			50.9
2/7/2014	GBP	Industrial Production (YoY)		2.30%	2.50%
2/7/2014	GBP	Manufacturing Production (YoY)		2.30%	2.80%
2/7/2014	GBP	Trade Balance		-9.30B	-9.44B
2/7/2014	USD	Nonfarm Payrolls		184K	74K
2/7/2014	USD	Unemployment Rate		6.70%	6.70%
2/7/2014	USD	Consumer Credit		12.00B	12.32B

## Indian Economic Calendar

Date	Curr.	Event	Actual	Forecast	Previous
2/3/2014	INR	HSBC Markit Manufacturing PMI			50.7
2/5/2014	INR	Indian HSBC Services PMI			46.7
2/5/2014	INR	Indian M3 Money Supply			14.50%
2/7/2014	INR	Indian Bank Loan Growth			14.80%

### Disclaimer:

This report is for the personal information of the authorized recipient and does not constitute to be any investment, legal or taxation advice to you. Ashika Stock Broking Ltd., is not soliciting any action based upon it. This report is not for public distribution and has been furnished to you solely for your information and should not be reproduced or redistributed to any other person in any form. The report is based upon information that we consider reliable, but we do not represent that it is accurate or complete, and it should not be relied upon such. Ashika Stock Broking Ltd. or any of its affiliates or employees shall not be in anyway responsible for any loss or damage that may arise to any person from any inadvertent error in the information contained in this report. Ashika Stock Broking Ltd., or any of its affiliates or employees do not provide, at any time, any express or implied warranty of any kind, regarding any matter pertaining to this report, including without limitation the implied warranties of merchantability, fitness for a particular purpose, and non-infringement. The recipients of this report should rely on their own investigations. "Ashika Stock Broking Ltd., and/or its affiliates and /or employees may have interests/positions, financial or otherwise in the securities mentioned in this report."