

Equity	Latest	% Chg	NSE Sect. Indices	Latest	% Chg
Nifty	6660	0.11	CNX IT	8964	0.19
Sensex	22344	0.09	BANK NIFTY	13037	0.77
DowJones	16551	0.20	S&P CNX 500	5237	0.07
Nasdaq	4052	(0.40)	CNX FMCG	17491	(0.87)
Hangseng	21828	(0.04)	CNX REALTY	174	(0.85)
Shanghai	2012	(0.14)	CNX AUTO	5876	0.64
Nikkei	14248	0.59	CNX ENERGY	8433	(0.12)
Strait Times	3248	0.00	CNX PHARMA	8048	(0.28)
Kospi	1953	0.13	Advances / Declines	BSE	NSE
Taiwan	8908	(0.25)	Advances	1305	644
FTSE	3204	1.41	Declines	1435	807
CAC	6839	0.63	Unchanged	128	92
DAX	4507	1.37	Total	2868	1543

Nifty Gainers		
Company	Price(Rs)	Chg(%)
BHEL	185.10	3.76
HCLTECH	1345.00	1.83
TATAMOTORS	423.85	1.72
POWERGRID	104.20	1.66
CIPLA	388.00	1.41

Nifty Losers		
Company	Price(Rs)	Chg(%)
BPCL	463.60	(1.85)
HEROMOTOCO	2129.00	(1.36)
ITC	342.00	(1.34)
LUPIN	978.35	(1.18)
BHARTIARTL	308.00	(0.96)

Vol. Shockers	Last Day (Lakh)	2 Wk Avg. (Lakh)	Vol. Ch. (Times)
City Union Bank	238.88	1.3	182
Bajaj Finserv	4.10	0.1	89
PI Inds	3.67	0.1	33
Texmaco Rail & Engg	8.20	0.4	20
JUBILANT	3.94	0.4	9

Indian Forex	Closing	Chg	% Chg
USD/INR	59.991	(0.049)	(0.08)
GBP/INR	101.751	(0.215)	(0.21)
EUR/INR	83.481	(0.103)	(0.12)
JPY/INR	58.960	(0.210)	(0.35)

Precious Metal	Closing	Chg (Rs.)
Gold (Rs/10gm)	29675	(325)
Silver (Rs/1kg)	41675	(620)

Commodities	Price	% Chg.
Crude (US\$/BBL)	100.5	(0.37)
Brent (US\$/BBL)	108.1	0.13
Gold (US/oz)	1290.0	0.06
Silver (US\$/oz)	19.2	(0.57)
Copper (US\$/MT)	6690.5	0.04
Alum (US\$/MT)	1717.5	(0.64)
Zinc(US\$/MT)	2020.0	(1.42)

ADR	Cl. Values	% Chg.
ICICI Bank	44.60	0.79
HDFC Bank	41.81	0.52
Infosys	51.41	0.11
Sterlite Inds.	6.22	0.00
Dr. Deddy's Labs	45.24	(0.60)
Wipro	11.69	0.15
Tata Motors	38.28	0.16

Market Sensor

US market mostly declined Thursday afternoon, with the S&P 500 retreating after rising to within two points of its record close and the Nasdaq Composite extending losses into a third day, as investors sorted through a mixed bag of earnings.. Dow Jones Industrial Average was up 0.20% or 32.43 points at 16550.97.Nasdaq Composite was down 0.40% or 16.18 points at 4051.50. Standard & Poor's 500 was down 0.14% or 2.58 points at 1875.63.

Indian Equity market ended the previous trading almost flat as traders seems to be in a wait and watch policy in the market ahead of Union Election results announcement. Nifty ended the previous trading session with a gain of 0.11% or 7.30 points at 6659.85. On Thursday's trading session, FIIs bought net Rs.363.24 Cr in cash market and sold net Rs.1389.89 in derivative segment. Whereas, DII sold net Rs.119.9 Cr in cash segment.

Coming to today's trade Nifty to remain volatile, with crucial intraday support exists at 6600 followed by 6570 while resistance is seen at 6720 followed by 6780.

Global News

❖ Consumer inflation in China moderated to an 18-month low and the decline in factory-gate prices persisted, giving the government more scope to loosen policies if a growth slowdown deepens. (Bloomberg)

❖ South Korea's central bank left its key rate unchanged and the government said it will speed up spending, seeking to spur growth that faces headwinds from a surge in the won and weaker consumption after a deadly ferry accident. (Bloomberg)

❖ Ukraine's leaders said they're ready for a dialogue with peaceful representatives of the eastern regions, where pro-Russian separatists said they'll push ahead with a vote on autonomy after Russian President Vladimir Putin called for a delay. (Bloomberg)

❖ Mario Draghi has primed investors for action next month. With the threat of deflation still stalking euro-area economies that are barely out of recession, the European Central Bank president all but committed himself to providing further stimulus at June's monetary policy meeting. (Bloomberg)

❖ The Bank of Japan's failure to achieve its inflation target will see the yen rebound to the highest since 2012, reversing the results of its unprecedented stimulus, according to Tokai Tokyo Securities Co. (Bloomberg)

Economic News

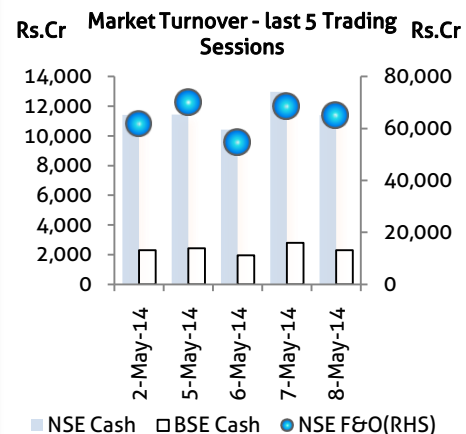
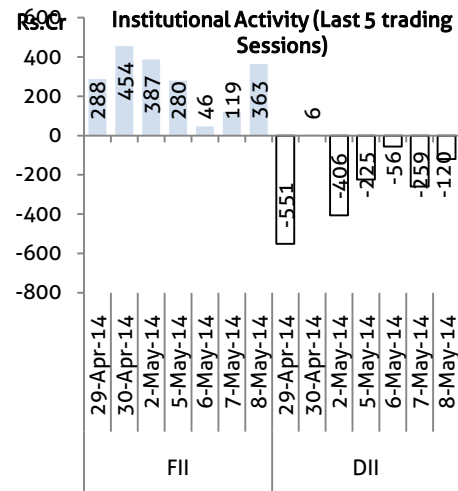
- ❖ The State Cabinet today approved providing of loans to the ailing Odisha State Cooperative Marketing Federation (Markfed) and Aska Sugar Mill. (BS)
- ❖ Planning Commission members are likely to put in their papers on May 16, the day when result for Lok Sabha elections will be announced, paving the way for reconstitution of the panel by new government. (BS)
- ❖ Planning Commission members are likely to put in their papers on May 16, the day when result for Lok Sabha elections will be announced, paving the way for reconstitution of the panel by new government. (BS)
- ❖ Finance Minister P. Chidambaram Thursday said the "economy has stabilised" and the government is taking steps to curb inflation. (BS)
- ❖ The CBI today undertook before the Supreme Court that it would not file any closure report in the coalgate scam until it files its status report, along with CVC, on June 30. (BS)
- ❖ About 5% deficit rains due to possible El Nino factor could have a bearing on economic growth by 1.75% in the 2014-15 fiscal, affecting lakhs of unskilled jobs, an ASSOCHAM report said. (BS)
- ❖ Finance Minister P Chidambaram made a strong case to encourage foreign and domestic investment to boost growth and said PSUs alone are expected to pump in Rs 1.33 lakh crore in the current financial year. (BS)
- ❖ GDP is a very important indicator of measuring economic growth and it doesn't need reiteration that a plunge from 9% to 5% is definite cause for worry for any economy. Low GDP has implications on a country's social objectives. It delays the effort to reduce poverty and has massive ramifications on consumption demand, employment creation and standards of living. (BS)
- ❖ The government will defend a notice for arbitration from Vodafone Group Plc in a more than \$2 billion tax dispute, Finance Minister P Chidambaram said on Thursday. (BS)
- ❖ With India stepping up pressure for data on alleged illicit funds parked in Swiss banks, Switzerland has asserted that it cannot positively respond to requests which are beyond the ambit of bilateral tax treaty. (BS)
- ❖ Private sector activity among emerging market economies was broadly stagnant for the second successive month in April, indicating falling output in India, China, Brazil and Russia, an HSBC survey said. (BS)

Domestic News

- ❖ The Netherlands Development Finance Company (FMO) has exited from City Union Bank by selling its entire 4.32 per cent equity share in the Bank for an aggregate amount of Rs 147.66 crore. (BS)
- ❖ Direct selling major Amway India has posted about 16% growth in sales in the state in 2013 compared to the previous year. (BS)
- ❖ State-run Industrial Promotion and Investment Corporation of Odisha (IPICOL) has recommended a land size of 676.73 acre for various projects of NTPC Ltd in Dhenkanal district, less than 745 acre land sought initially by the power producer. NTPC has agreed to the final land estimate of IPICOL, the state government firm said. (BS)
- ❖ State-owned Coal India (CIL) has modified basis for determining security deposit pertaining to the fuel agreements (FSA) for the new power plants. (BS)

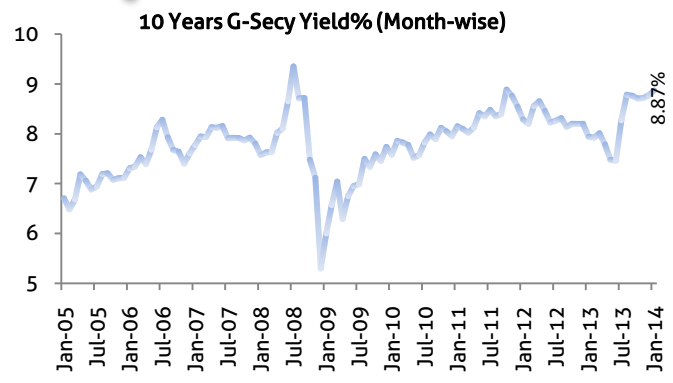
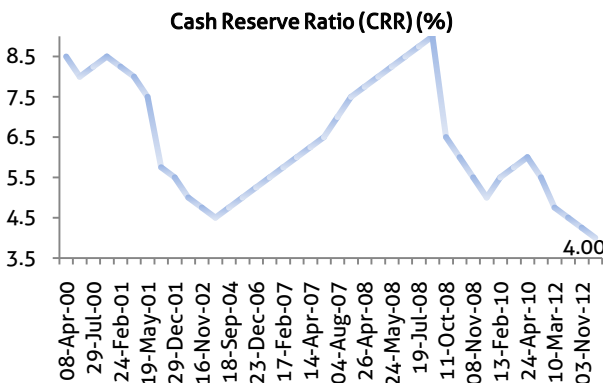
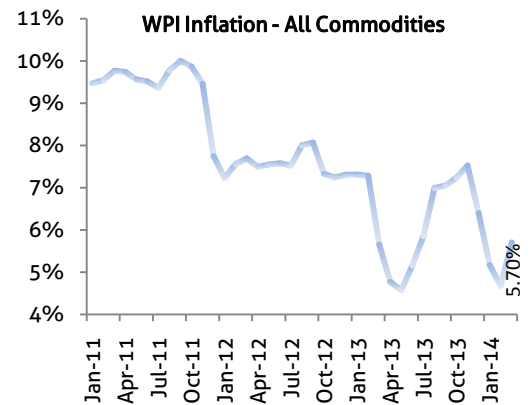
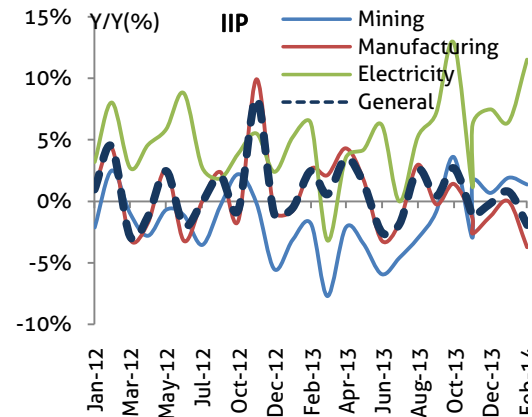
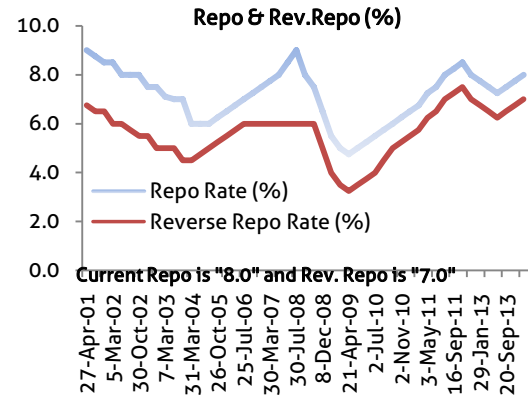
Global Forex	Closing	Chg	% Chg
EUR-USD	1.3837	(0.0003)	(0.02)
GBP-USD	1.6919	(0.0013)	(0.08)
USD-JPY	101.73	0.07	0.07

Bond Markets	Closing	Chg
10-yr bond	8.94	1.0 bps
Interbank call	7.97	-13.0 bps



Domestic News (Cont...)

- ❖ Glenmark Pharmaceuticals Limited (GPL) posted a consolidated net profit of Rs 542 crore for FY13-14. Consolidated Revenue grew by 20% to Rs 6,007 crore (\$994 mn) in FY 13-14. (BS)
- ❖ Textiles and plastic firm Sintex Industries today reported 6.75% increase in consolidated net profit at Rs 161.17 crore for the quarter ended March 31. (BS)
- ❖ Bangalore-based Strand Life Sciences (SLS), a global life sciences and clinical genomics company, is looking to raise fresh funds in the range of between \$20 million and \$30 million to fund its expansion programme. (BS)
- ❖ Mahindra controlled sports utility vehicle specialist SsangYong Motor Company is scouting for a new brand identity for itself as the current name is confused for a Chinese brand in some of the international markets. (BS)
- ❖ Public sector lender Union Bank of India has posted 26.65% drop in net profit at Rs 578.96 crore in the fourth quarter ended March 2014, on sharp rise in provision for stressed assets and fall in non-interest income. (BS)
- ❖ Private power utility Tata Power announced the appointment of Ashok S Sethi as Executive Director of the company. (BS)
- ❖ The Delhi High Court agreed to hear a plea by Federation of Indian Airlines (FIA) challenging the grant of flying licence to AirAsia India by aviation regulator DGCA. (BS)
- ❖ US-based luxury hotel chain The Ritz Carlton will make its entry into Mumbai soon. City-based Oberoi Realty announced that Ritz Carlton will be its hospitality partner in its joint venture project in Worli area here. (BS)
- ❖ Indian Hotels Company, the country's biggest hotel firm, will open Taj Dubai in the fourth quarter of 2014. (BS)
- ❖ State-owned BHEL has commissioned another Gas Turbine Generating unit at a power project in Oman. (BS)
- ❖ Adani Enterprises won approval on Thursday from the Australian state of Queensland for an A\$16.5 billion (\$15.4 billion) coal and rail project in the untapped Galilee Basin. (BS)
- ❖ Grippled with high input costs and a weak demand scenario, the domestic sponge iron industry is now awaiting new projects to come up in infrastructure sector to see fresh demand. (BS)



Bulk Deal - NSE

Date	Security Name	Client Name	Buy/Sell	Traded Qty.	Price
8-May-14	Shriram City Union Financ	VONTOBEL FUNDS INC	SELL	597257	1265.0
8-May-14	Hinduja Global Sols Ltd	CREDIT SUISSE (SINGAPORE) LIMITED A/C CREDIT SUISSE (SINGAP	SELL	933000	500.0
8-May-14	Dishman Pharma &Chem Ltd	ARKAYA INVESTMENTS	BUY	552164	94.3
8-May-14	Alphageo (India) Limited	AQUILA DRILLING PVT LTD	BUY	67000	187.5
8-May-14	Dr. Datson's Labs Ltd	ONTIME TRADING PRIVATE LIMITED	BUY	244135	24.1

Bulk Deal - BSE

Date	Security Name	Client Name	Buy/Sell	Traded Qty.	Price
8-May-14	City Union Bank	NEDERLANDSE FINANCIERINGS-MAATSCHAPPIJ VOOR ONTWIKKELINGSLANDEN N	S	23,437,500	63.0
8-May-14	Shriram City Uni	VONTOBEL FUNDS	S	410,000	1265.0
8-May-14	BENGLA& ASM	MORGAN STANLEY ASIA (SINGAPORE) PTE	S	57,000	325.4
8-May-14	Esaar India	KAYAGURU INSURANCE BROKER PRIVATE LIMITED	S	416,700	42.8
8-May-14	Comfort Fincap	GOPALKA SAVINGS & INVESTMENT PRIVATE LIMITED	B	80,954	144.8

Corporate Actions

Scrip Code	Scrip Name	Ex-Date	Purpose	Record Date
532129	Hexaware Tech	09-May-14	Interim Dividend - Rs.3.00	12-May-14
502407	Nath Pulp	09-May-14	Consolidation of Shares	12-May-14
502407	Nath Pulp	09-May-14	Reduction of Capital	12-May-14
500530	Bosch	12-May-14	Dividend - Rs.55.00	-
523457	LINDEINDIA	12-May-14	Dividend - Rs.1.50	-
500790	Nestle India	15-May-14	Interim Dividend - Rs.-	-
500790	Nestle India	15-May-14	Interim Dividend - Rs.-	-
500790	Nestle India	15-May-14	Final Dividend - Rs.12.50	-
500790	Nestle India	15-May-14	Final Dividend - Rs.12.50	-
500325	RIL	16-May-14	Dividend - Rs.9.50	-
500188	Hindustan Zinc	19-May-14	Final Dividend - Rs.1.90	-
520056	Sundaram Clayton	19-May-14	3rd Interim Dividend - Rs.-	20-May-14
500413	Thomas Cook	21-May-14	Final Dividend - Rs.0.38	-
534312	MT Educare	22-May-14	2nd Interim Dividend - Rs.-	23-May-14
523445	Reliance Indl Infra	26-May-14	Dividend - Rs.3.50	-
590043	Harita Seat-Ş	27-May-14	Interim Dividend - Rs.-	28-May-14
500209	Infosys	29-May-14	Final Dividend - Rs.43.00	-
500180	HDFC Bank	05-Jun-14	Dividend - Rs.6.85	-
532174	ICICI Bank	05-Jun-14	Dividend - Rs.23.00	-
500696	Hindustan Unilever	11-Jun-14	Final Dividend - Rs.7.50	-
500165	Kansai Nerolac	11-Jun-14	Dividend - Rs.11.00	-
532215	Axis Bank	12-Jun-14	Dividend - Rs.20.00	-

Global Economic Calendar

Date	Curr.	Event	Actual	Forecast	Previous
05-May-14	CNY	Chinese HSBC Manufacturing PMI			48.3
05-May-14	EUR	PPI (YoY)		-1.70%	-1.70%
05-May-14	USD	Services PMI			54.2
05-May-14	USD	ISM Non-Manufacturing PMI		54.1	53.1
06-May-14	EUR	Services PMI		53.1	53.1
06-May-14	GBP	Services PMI		57.6	57.6
06-May-14	EUR	Retail Sales (MoM)		-0.20%	0.40%
06-May-14	USD	Trade Balance		-40.40B	-42.30B
07-May-14	CNY	Chinese HSBC Services PMI			51.9
07-May-14	USD	MBA 30-Year Mortgage Rate			4.49%
08-May-14	USD	Consumer Credit		15.45B	16.49B
08-May-14	GBP	RICS House Price Balance		56%	57%
08-May-14	CNY	Chinese Trade Balance		11.00B	7.71B
08-May-14	GBP	BoE QE Total			375B
08-May-14	GBP	Interest Rate Decision			0.50%
08-May-14	EUR	Interest Rate Decision		0.25%	0.25%
08-May-14	USD	Continuing Jobless Claims		2,765K	2,771K
08-May-14	USD	Initial Jobless Claims		325K	344K
09-May-14	CNY	Chinese CPI (YoY)		2.10%	2.40%
09-May-14	CNY	Chinese PPI (YoY)		-1.80%	-2.30%
09-May-14	GBP	Industrial Production (YoY)		2.40%	2.70%
09-May-14	GBP	Manufacturing Production (YoY)		2.90%	3.80%
09-May-14	GBP	Trade Balance		-9.00B	-9.09B
09-May-14	USD	Wholesale Inventories (MoM)		0.50%	0.50%

Indian Economic Calendar

Date	Curr.	Event	Actual	Forecast	Previous
05-May-14	INR	Indian HSBC Services PMI			47.5
09-May-14	INR	Trade Balance			

Disclaimer:

This report is for the personal information of the authorized recipient and does not constitute to be any investment, legal or taxation advice to you. Ashika Stock Broking Ltd., is not soliciting any action based upon it. This report is not for public distribution and has been furnished to you solely for your information and should not be reproduced or redistributed to any other person in any form. The report is based upon information that we consider reliable, but we do not represent that it is accurate or complete, and it should not be relied upon such. Ashika Stock Broking Ltd. or any of its affiliates or employees shall not be in anyway responsible for any loss or damage that may arise to any person from any inadvertent error in the information contained in this report. Ashika Stock Broking Ltd., or any of its affiliates or employees do not provide, at any time, any express or implied warranty of any kind, regarding any matter pertaining to this report, including without limitation the implied warranties of merchantability, fitness for a particular purpose, and non-infringement. The recipients of this report should rely on their own investigations. "Ashika Stock Broking Ltd., and/or its affiliates and /or employees may have interests/positions, financial or otherwise in the securities mentioned in this report."