

Equity	Latest	% Chg	NSE Sect. Indices	Latest	% Chg
Nifty	5928	0.38	CNX IT	8435	(0.31)
Sensex	19984	0.44	BANK NIFTY	10141	0.59
DowJones	14777	(1.07)	S&P CNX 500	4536	0.30
Nasdaq	3695	(2.00)	CNX FMCG	17794	1.09
Hangseng	23039	(0.60)	CNX REALTY	161	1.23
Shanghai	2205	0.29	CNX AUTO	4890	0.03
Nikkei	13920	0.18	CNX ENERGY	7642	0.37
Strait Times	3155	0.27	CNX PHARMA	7566	0.17
Kospi	2003	0.42	Advances / Declines	BSE	NSE
Taiwan	8349	(0.32)	Advances	1269	629
FTSE	6366	(1.11)	Declines	1143	528
CAC	4134	(0.77)	Unchanged	152	73
DAX	8556	(0.42)	Total	2564	1230

Nifty Gainers		
Company	Price(Rs)	Chg(%)
BHARTIARTL	331.35	2.51
LT	827.00	2.21
ITC	347.15	2.09
JINDALSTEL	245.60	2.04
ICICIBANK	934.50	2.00

Nifty Losers		
Company	Price(Rs)	Chg(%)
BPCL	341.45	(3.23)
HINDALCO	119.35	(2.05)
SBIN	1600.00	(2.02)
IDFC	93.85	(1.93)
BHEL	143.95	(1.44)

Vol. Shockers	Last Day (Lakh)	2 Wk Avg. (Lakh)	Vol. Ch. (Times)
Jamna Auto	14.41	0.01	2749.2 2
KOTAKGOLDDET	2.00	0.00	622.35
ORIENT CEM	20.43	0.18	114.89
Apar Inds	8.02	0.08	105.30
Marico	2.37	0.18	13.01

Indian Forex	Closing	Chg	% Chg
USD/INR	61.689	(0.088)	(0.14)
GBP/INR	99.201	0.137	0.14
EUR/INR	83.688	(0.148)	(0.18)
JPY/INR	63.500	(0.120)	(0.19)

Precious Metal	Closing	Chg (Rs.)
Gold (Rs/10gm)	29705	(45)
Silver (Rs/1kg)	49645	1008

Commodities	Price	% Chg.
Crude (US\$/BBL)	103.4	0.31
Brent (US\$/BBL)	110.0	0.43
Gold (US/oz)	1317.6	(0.76)
Silver (US\$/oz)	22.3	(0.67)
Copper (US\$/MT)	7231.5	0.84
Alum (US\$/MT)	1818.5	1.54
Zinc(US\$/MT)	1850.0	1.15

ADR	Cl. Values	% Chg.
ICICI Bank	30.50	(1.35)
HDFC Bank	31.99	(1.40)
Infosys	48.34	(1.08)
Sterlite Inds.	6.22	0.00
Dr. Deddy's Labs	38.15	(0.51)
Wipro	10.36	(0.16)
Tata Motors	28.36	(0.47)

Market Sensor

U.S. market finished sharply lower for a second day on Tuesday, as investors digested President Obama's call on Congressional Republicans to approve a budget and end the government shutdown. Dow Jones Industrial Average was down 1.07% or 159.71 points at 14776.53. Nasdaq Composite was down 2.00% or 75.54 points at 3694.83. Standard & Poor's 500 was down 1.23% or 20.67 points at 1655.45.

RBI further easing liquidity by cutting the MSF by 50 basis points led a modest rally in the Indian market. Nifty ended the previous trading session with a gain of 0.38% or 22.25 points at 5928.40. On Friday's trading session, FII's bought net Rs.226.32 Cr in cash market and sold net Rs 326.21 in derivative segment. Whereas, DII sold net Rs.454.35 Cr in cash segment.

Coming to today's trade Nifty may trade volatile with crucial support seen at 5840, while resistance exists at 5960 followed by 6000.

Global News

❖ President Barack Obama will nominate Janet Yellen as chairman of the Federal Reserve, which would put the world's most powerful central bank in the hands of a key architect of its unprecedented stimulus program and the first female leader in its 100-year history. (Bloomberg)

❖ Asia-Pacific leaders pledged to work together to revive growth while keeping to a year-end deadline on a key trade deal, as China touted its increased influence in the region in the absence of U.S. President Barack Obama. (Bloomberg)

❖ Australia's central bank will probably have to cut interest rates again as a record resources-investment boom fades, according to Pacific Investment Management Co., which runs the world's biggest bond fund. (Bloomberg)

❖ Emerging-market economic growth remains "muted" with a confidence gauge just above the threshold signaling expansion, according to HSBC Holdings Plc. (HSBA) (Bloomberg)

❖ The U.S. Treasury Department isn't planning to provide assistance to Puerto Rico and continues to monitor the situation after the commonwealth's bond yields rose to records, according to a Treasury spokeswoman who spoke on condition of anonymity. (Bloomberg)

Economic News

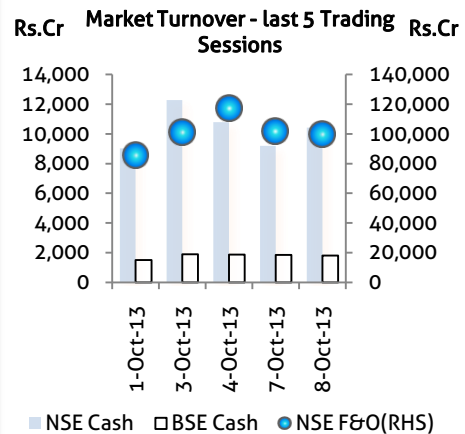
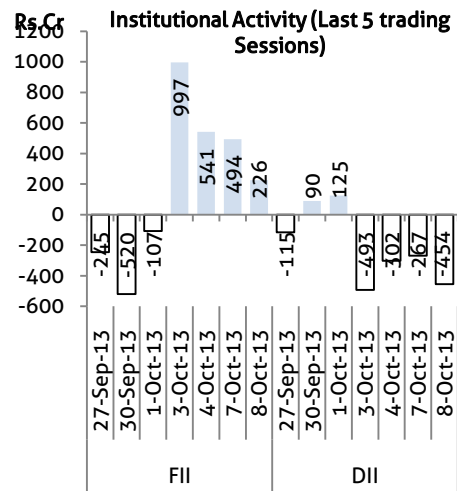
- ❖ Three proposals entailing Rs 38.09 crore in foreign direct investment (FDI) have been cleared, the Finance Ministry said. (BS)
- ❖ As much as 4,000 MW power supply in Andhra Pradesh has been impacted by protests against the bifurcation of the state. (BS)
- ❖ The Labour Ministry drew flak from its minister "for not doing anything concrete" or "seriously" to eradicate the problem of bonded labour. (BS)
- ❖ Gold demand from India is likely to jump as much as 15% to 300 tonne in the December quarter from a year earlier as pent-up demand post a good monsoon could re-surface after a difficult September quarter, a senior official at the World Gold Council (WGC) said on Tuesday. (BS)
- ❖ The Union Cabinet approved the National Identification Authority of India Bill that will give statutory status to the UIDAI. (BS)
- ❖ India will topple the United States as the world's biggest importer of infrastructure goods by 2020 and is expected to hold this position till 2030, a report by HSBC said. (BS)
- ❖ The government will have to rein in spending and cut subsidies to meet its fiscal deficit target, the finance minister said on Monday, underlining that an austerity drive will not be blown off course by an election due next year. (BS)
- ❖ Planning Commission Deputy Chairman Montek Singh Ahluwalia said the worst is over for the rupee and the fair value for the currency could be between 60 and 65 against the US dollar. (BS)
- ❖ Emerging market economies like India, China and Malaysia are likely to drive global IT investments and are expected to account for 35% of the total global IT spend by 2020, says a report. (BS)
- ❖ Food prices are expected to remain volatile globally over the next few years and countries including India will have to adapt to the volatility, UN body Food and Agriculture Organization has said. (BS)

Domestic News

- ❖ Female employees at SBI can look forward to fairer HR policies as the bank's first woman chief Arundhati Bhattacharya hinted at allowing staff to avail of long sabbaticals, among other initiatives. (BS)
- ❖ Maintaining its negative outlook on Tata Steel (TSL), India Ratings and Research (Ind-Ra) said the profitability of the steel maker would remain under pressure in the near-term. (BS)
- ❖ India's premier IT industry body Nasscom expects engineering research and development (ER&D) industry to touch \$40 billion by 2020 from the current \$10-11 billion. (BS)
- ❖ The tussle between drug makers on one side and retailers, distributors on the other, is getting intense even as essential medicines continue to be in short supply following the government's new price regulation. The new order aims to bring down the prices of some key medicines by up to 90 per cent. (BS)
- ❖ New Delhi-based petrochemicals distributor Jay Polychem (India) Ltd has surrendered its power trading license to the Central Electricity Regulatory Commission (CERC) arguing stiff competition and market uncertainty has made trading unviable. (BS)
- ❖ After planning a common rail corridor for the Angul-Talcher-Chhendipada belt, the Odisha government has decided to develop a similar infrastructure facility in the Rampia coal block. (BS)

Global Forex	Closing	Chg	% Chg
EUR-USD	1.3565	(0.0008)	(0.06)
GBP-USD	1.6074	(0.0010)	(0.06)
USD-JPY	97.29	0.41	0.42

Bond Markets	Closing	Chg
10-yr bond	8.75	-12.8 bps
Interbank call	8.99	-49.0 bps



Domestic News (Cont...)

❖ Barely a couple of months after joining Lakshmi Vilas Bank as executive director, Moses Harding has left the old-generation private sector lender to become the group chief executive officer (CEO) of SREI Infrastructure Finance, people familiar with the development told Business Standard. (BS)

❖ Even as sales of two-wheelers and passenger vehicles in the domestic market rose to its highest level in September in this financial year, industry body Society of Indian Automobile Manufacturers (SIAM) remains skeptic of a recovery in sales in the near future. (BS)

❖ India's largest automobile company Tata Motors Limited which is aggressively repositioning its passenger cars on Tuesday rolled out its first factory fitted compressed natural gas (CNG) variant with the launch of Nano emax. This will be followed by launch of CNG versions of its other passenger cars indica, indigo safari storme in the next couple of months. (BS)

❖ Instant messaging apps like Whatsapp have fuelled a new form of group communication over mobile. Japanese instant messaging app LINE believes that this can spur social networking, amongst small communities. (BS)

❖ Tata Docomo plans to launch a wi-fi dongle soon, which it hopes will cater to multiple-device using consumers, in direct competition to 3Gtechnology. The new device will be called Wingles, will be launched next month. (BS)

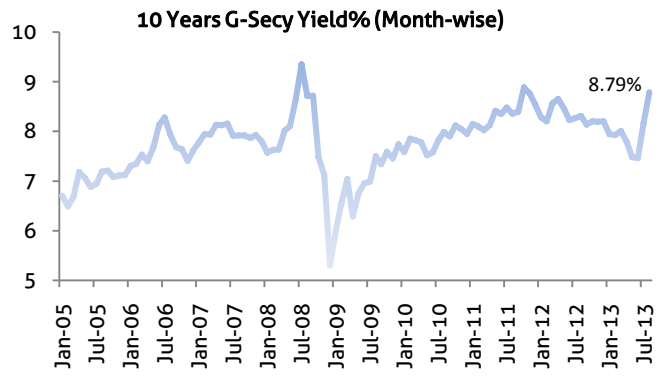
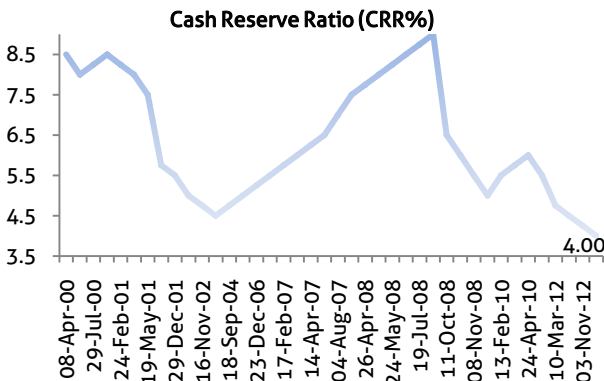
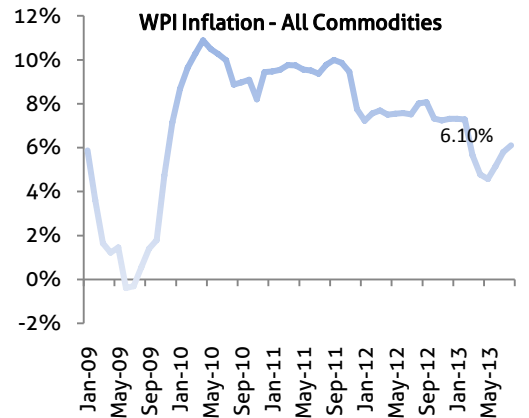
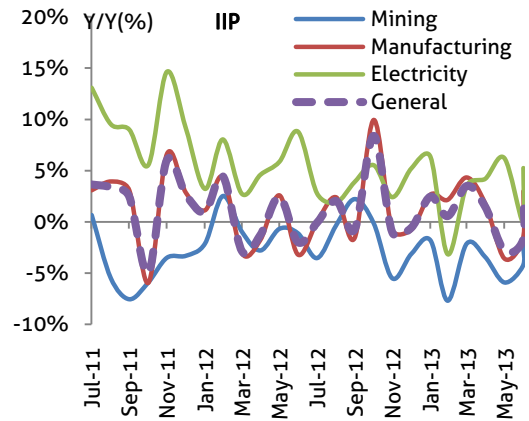
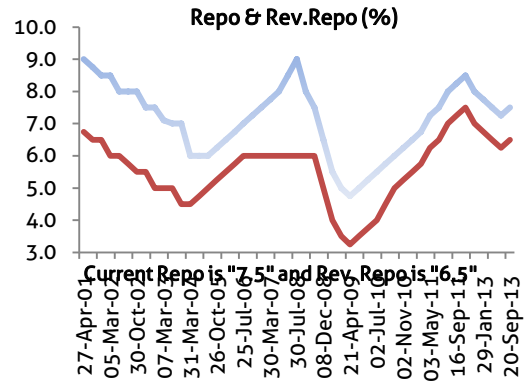
❖ The Department of Telecommunications (DoT) has said that the set off of Rs 684.59 crore, which was adjusted with the price of fresh spectrum that Idea Cellular has bought through auction in November 2012, was given following the rules and regulations. (BS)

❖ Global credit rating agency Moody's has given 'Baa3' rating to Bharti Airtel, saying that this is underpinned by receipt of strong and growing cash flows from its Indian operations. (BS)

❖ The country's largest power producer NTPC has asked the Meghalayagovernment to clear its pending dues within the next three days, failing which the company will regulate power supply to the state. (BS)

❖ Infrastructure development company IVRCL said its water division has bagged contracts worth Rs 1,423 crore.

❖ Essar Projects said it has secured a Rs 70-crore contract in Gujarat for construction of a sewage treatment plant.



Bulk Deal - NSE

Date	Security Name	Client Name	Buy/Sell	Traded Qty.	Price
8-Oct-13	Hinduja Global Sols Ltd	AASIA EXPORTS	BUY	500000	310
8-Oct-13	Hinduja Global Sols Ltd	AASIA CORPORATION	SELL	500000	310
8-Oct-13	Gabriel India Ltd	SHETH ANUJ ANANTRAI	BUY	2750000	18.5
8-Oct-13	IVRCL Limited	TRANSGLOBAL SECURITIES LTD.	BUY	1605216	12.15
8-Oct-13	Himatsingka Seide Ltd	CITIGROUP GLOBAL MARKET MAURITIUS PVT.LTD.	SELL	500000	35.02

Bulk Deal - BSE

Date	Security Name	Client Name	Buy/Sell	Traded Qty.	Price
8-Oct-13	Apar Inds	SHINNY LIMITED	S	702,181	116
8-Oct-13	Jamna Auto	GAGANDEEP CREDIT CAPITAL PRIVATE LIMITED	S	1,440,265	54
8-Oct-13	Sinclairs Hotel-\$	SUJATA SUCHANTI	S	72,000	354
8-Oct-13	Repro India	ASIA ADVANTAGE FUND	S	136,500	120.04
8-Oct-13	S V Global	SADAYAVEL KAILASAM	S	436,000	19

Corporate Actions

Scrip Code	Scrip Name	Ex-Date	Purpose	Record Date
530059	Maharaja Shree-\$	09-Oct-13	Scheme of Arrangement	10-Oct-13
531228	Rander Corp	09-Oct-13	Stock Split from Rs. 10/- to Re. 1/-	10-Oct-13
503637	Dhanleela Inv	10-Oct-13	Stock Split from Rs. 10/- to Rs.2/-	12-Oct-13
531307	S R K Inds	11-Oct-13	Stock Split from Rs.10/- to Rs.5/-	14-Oct-13
500495	Escorts	14-Oct-13	Interim Dividend - Rs.1.20	15-Oct-13
500405	Supreme Petro	14-Oct-13	Dividend - Rs.2.50	-
500469	Federal Bank	17-Oct-13	Stock Split from Rs.10/- to Rs.2/-	18-Oct-13
500209	Infosys	17-Oct-13	Interim Dividend - Rs.-	18-Oct-13
500387	Shree Cement	17-Oct-13	Final Dividend - Rs.12.00	-
532819	Mindtree	21-Oct-13	Interim Dividend - Rs.-	22-Oct-13
532281	HCL Tech	22-Oct-13	Interim Dividend - Rs.-	23-Oct-13
523716	Ashiana Hous-\$	24-Oct-13	Stock Split from Rs.10/- to Rs.2/-	25-Oct-13
500820	Asian Paints	24-Oct-13	Interim Dividend - Rs.-	26-Oct-13
500150	Foseco India	31-Oct-13	3rd Interim Dividend - Rs.-	01-Nov-13
524494	IPCA Lab	31-Oct-13	Interim Dividend - Rs.-	01-Nov-13
512105	Shree Nath Comm	31-Oct-13	Consolidation of Shares	01-Nov-13
505729	Singer India	01-Nov-13	Dividend - Rs.1.50	-
500830	Colgate Palmolive	06-Nov-13	1st Interim Dividend - Rs.-	07-Nov-13
500459	Procter & Gamble	21-Nov-13	Final Dividend - Rs.25.00	-

Global Economic Calendar

Date	Curr.	Event	Actual	Forecast	Previous
7-Oct-13	JPY	Leading Index CI			107.9
8-Oct-13	USD	Consumer Credit		12.00B	10.44B
8-Oct-13	GBP	RICS House Price Balance		45%	40%
8-Oct-13	CNY	Chinese HSBC Services PMI			52.8
8-Oct-13	JPY	Economy Watchers Current Index			51.2
8-Oct-13	USD	Trade Balance		-39.0B	-39.2B
9-Oct-13	GBP	Industrial Production (MoM)		0.40%	
9-Oct-13	GBP	Manufacturing Production (MoM)		0.40%	0.20%
9-Oct-13	GBP	Trade Balance		-9.00B	-9.85B
9-Oct-13	USD	Wholesale Inventories (MoM)		0.30%	0.10%
10-Oct-13	GBP	BoE QE Total		375B	375B
10-Oct-13	GBP	Interest Rate Decision		0.50%	0.50%
10-Oct-13	USD	Import Price Index (MoM)		0.30%	
10-Oct-13	USD	Initial Jobless Claims		310K	308K
11-Oct-13	JPY	CGPI (YoY)		2.30%	2.40%
11-Oct-13	USD	Nonfarm Payrolls		180K	169K
11-Oct-13	USD	PPI (MoM)		0.20%	0.30%
11-Oct-13	USD	Retail Sales (MoM)		0.30%	0.20%
11-Oct-13	USD	Unemployment Rate		7.30%	7.30%
11-Oct-13	USD	Michigan Consumer Sentiment		76	77.5
11-Oct-13	USD	Business Inventories (MoM)		0.30%	0.40%
11-Oct-13	USD	Construction Spending (MoM)		0.40%	0.60%
11-Oct-13	USD	Factory Orders (MoM)		0.30%	-2.40%

Indian Economic Calendar

Date	Curr.	Event	Actual	Forecast	Previous
10-Oct-13	INR	Exports YoY			13.00%
11-Oct-13	INR	Indian Industrial Production (YoY)			2.60%
11-Oct-13	INR	Indian Manufacturing Output (MoM)			3.00%

Disclaimer:

This report is for the personal information of the authorized recipient and does not construe to be any investment, legal or taxation advice to you. Ashika Stock Broking Ltd., is not soliciting any action based upon it. This report is not for public distribution and has been furnished to you solely for your information and should not be reproduced or redistributed to any other person in any form. The report is based upon information that we consider reliable, but we do not represent that it is accurate or complete, and it should not be relied upon such. Ashika Stock Broking Ltd. or any of its affiliates or employees shall not be in anyway responsible for any loss or damage that may arise to any person from any inadvertent error in the information contained in this report. Ashika Stock Broking Ltd., or any of its affiliates or employees do not provide, at any time, any express or implied warranty of any kind, regarding any matter pertaining to this report, including without limitation the implied warranties of merchantability, fitness for a particular purpose, and non-infringement. The recipients of this report should rely on their own investigations. "Ashika Stock Broking Ltd., and/or its affiliates and /or employees may have interests/positions, financial or otherwise in the securities mentioned in this report."