

| Equity | Latest | % Chg | NSE Sect. Indices | Latest | % Chg |
|--------------|--------|--------|----------------------------|------------|------------|
| Nifty | 6527 | 1.96 | CNX IT | 10055 | (1.95) |
| Sensex | 21920 | 1.89 | BANK NIFTY | 11885 | 5.38 |
| DowJones | 16453 | 0.19 | S&P CNX 500 | 5034 | 1.51 |
| Nasdaq | 4336 | (0.37) | CNX FMCG | 17191 | 0.62 |
| Hangseng | 22660 | (0.19) | CNX REALTY | 175 | 5.62 |
| Shanghai | 2058 | (0.08) | CNX AUTO | 5530 | 0.94 |
| Nikkei | 15274 | 0.92 | CNX ENERGY | 7942 | 3.32 |
| Strait Times | 3136 | 0.23 | CNX PHARMA | 7898 | (1.84) |
| Kospi | 1975 | (0.05) | Advances / Declines | BSE | NSE |
| Taiwan | 8714 | 0.00 | Advances | 1354 | 709 |
| FTSE | 6713 | (1.12) | Declines | 1466 | 749 |
| CAC | 4366 | (1.15) | Unchanged | 160 | 87 |
| DAX | 9351 | (2.01) | Total | 2980 | 1545 |

| Nifty Gainers | | |
|---------------|-----------|--------|
| Company | Price(Rs) | Chg(%) |
| DLF | 167.90 | 10.35 |
| JPASSOCIAT | 47.80 | 9.63 |
| BHEL | 185.45 | 6.98 |
| BANKBARODA | 656.00 | 6.57 |
| ICICIBANK | 1204.15 | 6.19 |

| Nifty Losers | | |
|--------------|-----------|--------|
| Company | Price(Rs) | Chg(%) |
| DRREDDY | 2731.00 | (3.40) |
| WIPRO | 565.50 | (3.31) |
| INFY | 3740.00 | (2.40) |
| SUNPHARMA | 612.15 | (1.43) |
| LUPIN | 975.00 | (0.79) |

| Vol. Shockers | Last Day (Lakh) | 2 Wk Avg. (Lakh) | Vol. Ch. (Times) |
|--------------------|-----------------|------------------|------------------|
| Sanghi Inds | 33.78 | 3.85 | 9 |
| Infotech Enter | 1.47 | 0.20 | 7 |
| Gujarat State Fert | 28.04 | 3.97 | 7 |
| SRF | 6.79 | 1.50 | 5 |
| HDFC | 7.82 | 1.86 | 4 |

| Indian Forex | Closing | Chg | % Chg |
|--------------|---------|---------|--------|
| USD/INR | 60.985 | (0.339) | (0.55) |
| GBP/INR | 102.071 | (0.470) | (0.46) |
| EUR/INR | 84.526 | 0.339 | 0.40 |
| JPY/INR | 59.220 | (0.520) | (0.87) |

| Precious Metal | Closing | Chg (Rs.) |
|-----------------|---------|-----------|
| Gold (Rs/10gm) | 30400 | 200 |
| Silver (Rs/1kg) | 46846 | 306 |

| Commodities | Price | % Chg. |
|------------------|--------|--------|
| Crude (US\$/BBL) | 102.6 | 0.83 |
| Brent (US\$/BBL) | 109.0 | 0.71 |
| Gold (US/oz) | 1338.2 | (0.89) |
| Silver (US\$/oz) | 20.9 | (2.88) |
| Copper (US\$/MT) | 6930.5 | (1.76) |
| Alum (US\$/MT) | 1729.5 | (0.14) |
| Zinc(US\$/MT) | 2094.5 | (1.11) |

| ADR | Cl. Values | % Chg. |
|------------------|------------|--------|
| ICICI Bank | 40.30 | 1.26 |
| HDFC Bank | 37.33 | 1.82 |
| Infosys | 60.37 | (2.64) |
| Sterlite Inds. | 6.22 | 0.00 |
| Dr. Deddy's Labs | 43.90 | (2.55) |
| Wipro | 13.76 | (0.40) |
| Tata Motors | 34.01 | (0.68) |

Market Sensor

US market staged a mixed finish Friday, with the S&P 500 ending at another record, as investors tracked the standoff in Ukraine and after February's jobs report indicated the harsh winter could be the culprit behind recent weakness in economic data. Dow Jones Industrial Average was up 0.19% or 30.83 points at 16452.72. Nasdaq Composite was down 0.37% or 15.90 points at 4336.22. Standard & Poor's 500 was up 0.05% or 1.01 points at 1878.04.

Indian equity market exhibited an even bigger rally today to reach fresh all time high on closing basis for the second straight day. Nifty ended the previous trading session with a gain of 1.96% or 125.50 points at 6526.65. On Friday's trading session, FIIs bought net Rs.2577.44 Cr in cash market and bought net Rs.3811.95 in derivative segment. Whereas, DII sold net Rs.669.58 Cr in cash segment.

Coming to today's trade Nifty to remain volatile with crucial intraday support exists at 6460 followed by 6400 while resistance is seen at 6570 followed by 6620.

Global News

❖ Japan's economy expanded less than estimated in the fourth quarter and the current-account deficit widened to a record in January, highlighting risks to Abenomics as a sales-tax increase looms. Gross domestic product grew an annualized 0.7 percent from the previous quarter. (Bloomberg)

❖ The amount of debt globally has soared more than 40 percent to \$100 trillion since the first signs of the financial crisis as governments borrowed to pull their economies out of recession and companies took advantage of record low interest rates, according to the Bank for International Settlements. (Bloomberg)

❖ China's exports fell the most since the global financial crisis, dealing another blow to confidence as Communist Party leaders meeting in Beijing assess the risk from the nation's first onshore bond default. Shipments abroad dropped 18.1 percent from a year earlier. (Bloomberg)

❖ China's inflation slowed more than estimated to a 13-month low in February while factory-gate deflation deepened as prices cooled following a week-long holiday. The consumer price index rose 2 percent from a year earlier. (Bloomberg)

Economic News

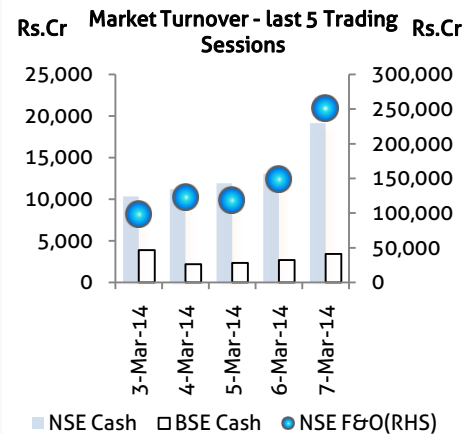
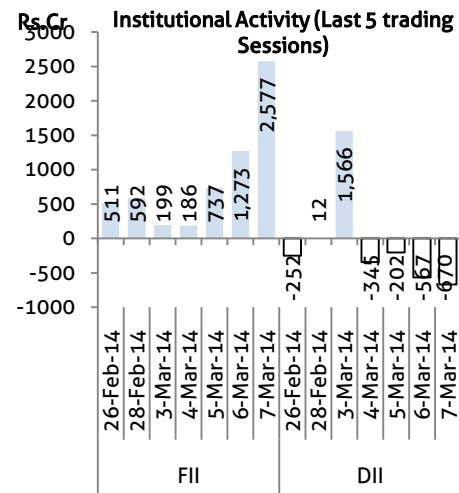
- ❖ In order to push production of pulses and oilseeds in the country to ensure adequacy under the Food Security Bill, the government has started focusing on the farmer producer organisations for exclusive production of critical crops like pulses and millets. (BS)
- ❖ Defending government's social security programmes, Planning Commission Deputy Chairman Montek Singh Ahluwalia said that it is wrong to call them "doles" as these are investments in delivery of services. (BS)
- ❖ India's current account deficit (CAD) will be contained at less than \$40 billion this financial year, well below the record level in 2012-13, Finance Minister P Chidambaram said. (BS)
- ❖ Meghalaya, which was once a power surplus state, is facing a power deficit of 20-30% of the demand. (BS)
- ❖ Vedanta group Chairman Anil Agarwal said the global business community needs to have patience while investing in India because the country is going through a transitional phase. (BS)
- ❖ Indian states are indulging in increasing power purchases as general elections draw nearer. The buying spree could have been heavier had the power deficit not come down. The slump in power demand had seen the deficit falling to 4.3% till January-end against 8.8% last year. (BS)
- ❖ With around 50% capacity increase in the offing, India's steel industry is likely to face a temporary over-supply situation, SAIL Chairman C S Verma said. (BS)
- ❖ Seeking to paint a rosy picture, Finance Minister P Chidambaram said the fiscal and current account deficits are under control and the economy is more stable than it was 18 months ago. (BS)
- ❖ Hail and heavy rain have damaged rapeseed and chickpea crops as they ripen in India's main producing areas in the last 10 days, cutting output and pushing back harvests, government and industry officials said. (BS)
- ❖ India's iron ore exports fell in February to less than 0.9 million tonne (889,882 tonne), showing a decline of 16.5% year-on-year. The pellet export shipments were completely absent in February and low buying interest from China and huge inventory affected exports. (BS)

Domestic News

- ❖ State-run Indian Oil Corporation (IOC) signed a deal to buy 10% stake in Malaysian firm Petronas' shale-gas and liquefied natural gas (LNG) project in British Columbia for \$900 million. (BS)
- ❖ India Friday dismissed Pakistan's offer to Kashmiri students, who had been booked in Uttar Pradesh's Meerut city for celebrating Pakistan's victory over India in a cricket match, that they could pursue their studies in that country. (BS)
- ❖ The Competition Commission has rejected Dish TV's allegation that six Multi-System Operators (MSOs), including Den Networks and Hathway Cable & Datacom, abused their dominant market position. (BS)
- ❖ Foreign fund Merrill Lynch has sold over 50 lakh equity shares in realty firm Ansal Properties and Infrastructure Ltd through open market for about Rs 9 crore. (BS)
- ❖ Market regulator Sebi slapped Rs 5.5 crore fine on Shelter Infra Projects Ltd (SIPL) and 11 entities for allegedly violating insider trading norms. (BS)

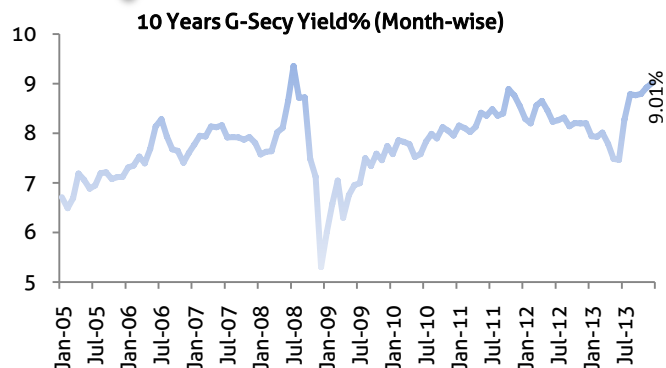
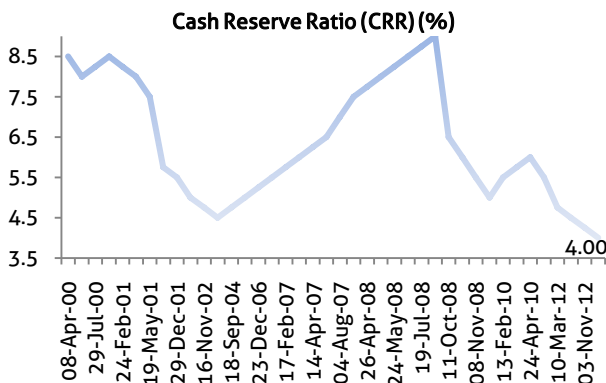
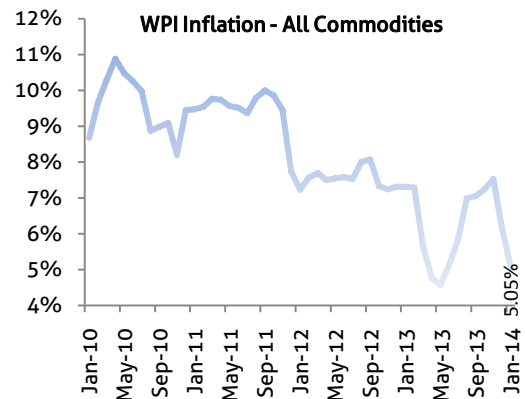
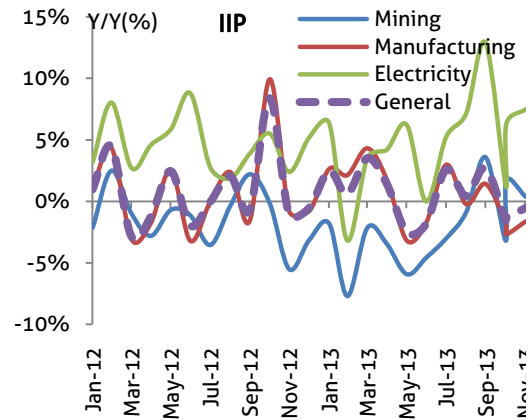
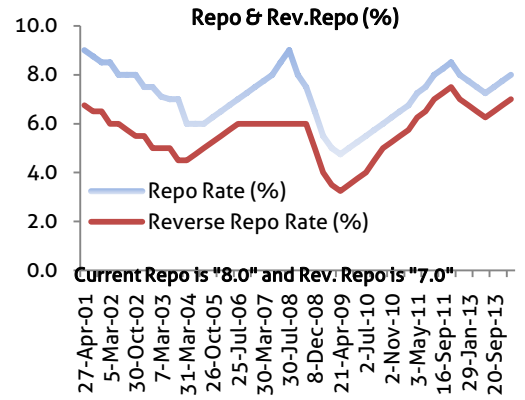
| Global Forex | Closing | Chg | % Chg |
|--------------|---------|----------|--------|
| EUR-USD | 1.3875 | 0.0014 | 0.10 |
| GBP-USD | 1.6713 | (0.0027) | (0.16) |
| USD-JPY | 103.28 | 0.21 | 0.20 |

| Bond Markets | Closing | Chg |
|----------------|---------|----------|
| 10-yr bond | 9.11 | 1.0 bps |
| Interbank call | 8.05 | 22.0 bps |



Domestic News (Cont...)

- ❖ Auto major Tata Motors said it has tied up with Bharatiya Mahila Bank to provide retail finance to its passenger vehicle customers. (BS)
- ❖ Stepping efforts to move 50% of its research outside Europe by 2020, Germany based BASF SE inaugurated a research and development (R&D) centre in Thane, near Mumbai.
- ❖ Promoters of Reliance MediaWorks have offered to buy back shares worth at least Rs 251 crore from public shareholders as part of plans to delist the company. (BS)
- ❖ Gold lender Muthoot Fincorp said it will be offering a two percentage point discount to women borrowers for loans under Rs 50,000 for a limited period in view of International Womens' Day tomorrow. (BS)
- ❖ Pune-based Vascon Engineers said it has bagged orders worth Rs 245 crore for construction of two residential projects. (BS)
- ❖ In a bid to provide customised local television channels to the regional viewers of the state, direct to home digital service provider Dish TV India Ltd rolled out a new brand 'Zing' in the state. (BS)
- ❖ Japanese retailer Aeon denied a newspaper report that it was in talks with the Bharti Group to set up a retail joint venture in India, while France's Carrefour declined to comment on whether it was also talking to Bharti. (BS)
- ❖ Reliance Communications has been named the global partner for the ICC Twenty20 World Cup, to be held in Bangladesh from 16 March. This is the fifth consecutive edition of the T-20 world cup that RComm and the ICC have tied up for. (BS)
- ❖ Internet search provider Justdial's three officials have sold 4,506 shares for an estimated Rs 76.33 lakh through the open market route. (BS)
- ❖ BP, Europe's second-largest oil company, is working with Reliance Industries to extend the life of producing gas fields in the Bay of Bengal KG-D6 block.
- ❖ Chennai-based Shasun Pharmaceuticals Ltd has signed the Joint Venture (JV) agreement with Bangalore-based pharmaceutical firm SeQuent Scientific Ltd to develop, manufacture and sell veterinary products including active pharmaceutical ingredients (API) and formulations in the global market.



Bulk Deal - NSE

| Date | Security Name | Client Name | Buy/Sell | Traded Qty. | Price |
|----------|---------------------------|--------------------------------------|----------|-------------|-------|
| 7-Mar-14 | Trident Limited | MADHURAJ FOUNDATION | BUY | 14000000 | 14.8 |
| 7-Mar-14 | Trident Limited | PRUDENT TRADERS PRIVATE LIMITED | SELL | 14000000 | 14.8 |
| 7-Mar-14 | IVRCL Limited | TRANSGLOBAL SECURITIES LTD. | SELL | 2714545 | 12.1 |
| 7-Mar-14 | S. Kumars Nationwide Ltd | INDUSTRIAL DEVELOPMENT BANK OF INDIA | SELL | 1736534 | 3.0 |
| 7-Mar-14 | Vijay Shanthi Builders Li | VARSHA JAIN | BUY | 157877 | 13.5 |

Bulk Deal - BSE

| Date | Security Name | Client Name | Buy/Sell | Traded Qty. | Price |
|----------|-------------------|--|----------|-------------|-------|
| 7-Mar-14 | Media Matrix | DIGIVISION HOLDINGS PRIVATE LIMITED | B | 13,600,000 | 3.7 |
| 7-Mar-14 | Sanghi Inds | BALAJI VOYAGE PRIVATE LIMITED | S | 3,300,000 | 15.0 |
| 7-Mar-14 | Eco Friendly Food | TRUCKLINK VINMAY TRADING PVT.LTD. | B | 94,800 | 489.7 |
| 7-Mar-14 | Nikki Global | EAST INDIA COMMODITIES PRIVATE LIMITED | B | 63,000 | 212.0 |
| 7-Mar-14 | Lok Housing-\$ | LGNC LTD | S | 1,000,000 | 12.5 |

Corporate Actions

| Scrip Code | Scrip Name | Ex-Date | Purpose | Record Date |
|------------|--------------------|-----------|---------------------------------------|-------------|
| 590106 | BANK BEES | 10-Mar-14 | Dividend - Rs.11.00 | 11-Mar-14 |
| 590104 | JUNIOR BEES | 10-Mar-14 | Dividend - Rs.1.00 | 11-Mar-14 |
| 500126 | Merck | 10-Mar-14 | Dividend - Rs.8.50 | - |
| 590103 | NIFTY BEES | 10-Mar-14 | Dividend - Rs.7.00 | 11-Mar-14 |
| 524632 | Relish Pharma | 10-Mar-14 | Reduction of Capital | 11-Mar-14 |
| 590109 | SHARIA BEES | 10-Mar-14 | Dividend - Rs.2.00 | 11-Mar-14 |
| 500092 | CRISIL | 11-Mar-14 | Final Dividend - Rs.4.00 | - |
| 500092 | CRISIL | 11-Mar-14 | Special Dividend With Final - Rs.6.00 | - |
| 500112 | SBI | 11-Mar-14 | Interim Dividend - Rs.15.00 | - |
| 505200 | Eicher Motors | 12-Mar-14 | Dividend - Rs.30.00 | - |
| 532751 | Easun Reyrolle | 13-Mar-14 | Right12:25 | 17-Mar-14 |
| 532481 | Noida Toll | 13-Mar-14 | Interim Dividend - Rs.1.50 | 14-Mar-14 |
| 534060 | Priti Mercantile | 13-Mar-14 | BONUS 8:10 | 15-Mar-14 |
| 580001 | Standard Chartered | 13-Mar-14 | Final Dividend - Rs.- | 14-Mar-14 |
| 513335 | Ahmednagar Forg | 14-Mar-14 | Dividend - Rs.1.00 | - |
| 530479 | ATLINFRA | 14-Mar-14 | Stock Split from Rs.10/- to Re.1/- | 18-Mar-14 |
| 530579 | GOLDEN GOEN | 18-Mar-14 | Right9:5 | 19-Mar-14 |
| 517354 | Havells India | 19-Mar-14 | Interim Dividend - Rs.- | 20-Mar-14 |
| 519335 | MLKPIL | 19-Mar-14 | Reduction of Capital | 31-Mar-14 |
| 512067 | Vishvjyoti Trd | 19-Mar-14 | Stock Split from Rs.10/- to Re.1/- | 20-Mar-14 |
| 520077 | Amtek Auto-\$ | 20-Mar-14 | Dividend - Rs.0.50 | - |
| 532282 | Amtek India-\$ | 20-Mar-14 | Dividend - Rs.0.10 | - |

Global Economic Calendar

| Date | Curr. | Event | Actual | Forecast | Previous |
|-----------|-------|-------------------------------------|--------|----------|----------|
| 10-Mar-14 | JPY | Current Account n.s.a. | | -1.411T | -0.639T |
| 10-Mar-14 | JPY | GDP (YoY) | | 1.00% | 1.00% |
| 10-Mar-14 | EUR | Sentix Investor Confidence | | 14 | 13.3 |
| 11-Mar-14 | GBP | Industrial Production (YoY) | | 3.00% | 1.80% |
| 11-Mar-14 | GBP | Manufacturing Production (YoY) | | 3.30% | 1.50% |
| 11-Mar-14 | USD | NFIB Small Business Optimism | | | 94.1 |
| 11-Mar-14 | USD | Wholesale Inventories (MoM) | | 0.30% | 0.30% |
| 12-Mar-14 | JPY | CGPI (YoY) | | 2.10% | 2.40% |
| 12-Mar-14 | GBP | Trade Balance | | -8.70B | -7.72B |
| 12-Mar-14 | EUR | Industrial Production (YoY) | | 1.90% | 0.50% |
| 12-Mar-14 | USD | Federal Budget Balance | | -170.0B | -10.4B |
| 13-Mar-14 | JPY | Core Machinery Orders (YoY) | | 18.80% | 6.70% |
| 13-Mar-14 | GBP | RICS House Price Balance | | 53% | 53% |
| 13-Mar-14 | CNY | Chinese Industrial Production (YoY) | | 9.50% | 9.70% |
| 13-Mar-14 | USD | Initial Jobless Claims | | | |
| 13-Mar-14 | USD | Import Price Index (MoM) | | 0.30% | 0.10% |
| 13-Mar-14 | USD | Retail Sales (MoM) | | 0.20% | -0.40% |
| 13-Mar-14 | USD | Business Inventories (MoM) | | 0.30% | 0.50% |
| 14-Mar-14 | JPY | Industrial Production (MoM) | | | 4.00% |
| 14-Mar-14 | USD | Michigan Consumer Sentiment | | | 81.6 |
| 14-Mar-14 | USD | PPI | | | |

Indian Economic Calendar

| Date | Curr. | Event | Actual | Forecast | Previous |
|-----------|-------|------------------------------------|--------|----------|----------|
| 11-Mar-14 | INR | Indian Exports (USD) | | | 26.75B |
| 11-Mar-14 | INR | Indian Imports (USD) | | | 36.67B |
| 11-Mar-14 | INR | Indian Trade Balance | | | -9.92B |
| 12-Mar-14 | INR | Indian CPI (YoY) | | | 8.79% |
| 12-Mar-14 | INR | Indian Industrial Production (YoY) | | | -0.60% |
| 12-Mar-14 | INR | Indian Manufacturing Output (MoM) | | | -1.60% |
| 14-Mar-14 | INR | Indian WPI (YoY) | | | 5.05% |

Disclaimer:

This report is for the personal information of the authorized recipient and does not constitute to be any investment, legal or taxation advice to you. Ashika Stock Broking Ltd., is not soliciting any action based upon it. This report is not for public distribution and has been furnished to you solely for your information and should not be reproduced or redistributed to any other person in any form. The report is based upon information that we consider reliable, but we do not represent that it is accurate or complete, and it should not be relied upon such. Ashika Stock Broking Ltd. or any of its affiliates or employees shall not be in anyway responsible for any loss or damage that may arise to any person from any inadvertent error in the information contained in this report. Ashika Stock Broking Ltd., or any of its affiliates or employees do not provide, at any time, any express or implied warranty of any kind, regarding any matter pertaining to this report, including without limitation the implied warranties of merchantability, fitness for a particular purpose, and non-infringement. The recipients of this report should rely on their own investigations. "Ashika Stock Broking Ltd., and/or its affiliates and /or employees may have interests/positions, financial or otherwise in the securities mentioned in this report."