

| Equity | Latest | % Chg | NSE Sect. Indices | Latest | % Chg |
|--------------|--------|--------|---------------------|--------|--------|
| Nifty | 6053 | (0.16) | CNX IT | 9619 | (0.30) |
| Sensex | 20334 | (0.21) | BANK NIFTY | 10214 | (0.48) |
| DowJones | 15802 | 0.05 | S&P CNX 500 | 4693 | (0.19) |
| Nasdaq | 4148 | 0.54 | CNX FMCG | 16828 | (0.15) |
| Hangseng | 21787 | 0.96 | CNX REALTY | 156 | 1.30 |
| Shanghai | 2088 | 0.08 | CNX AUTO | 5115 | 0.46 |
| Nikkei | 14718 | 1.77 | CNX ENERGY | 7528 | 0.49 |
| Strait Times | 3033 | 0.54 | CNX PHARMA | 7933 | 0.77 |
| Kospi | 1932 | 0.46 | | | |
| Taiwan | 8425 | 0.39 | | | |
| FTSE | 6592 | 0.30 | | | |
| CAC | 4237 | 0.21 | | | |
| DAX | 9290 | (0.13) | | | |
| | | | Advances / Declines | BSE | NSE |
| | | | Advances | 1328 | 660 |
| | | | Declines | 1246 | 722 |
| | | | Unchanged | 152 | 90 |
| | | | Total | 2726 | 1472 |

| Nifty Gainers | | |
|---------------|-----------|--------|
| Company | Price(Rs) | Chg(%) |
| DLF | 141.90 | 2.86 |
| DRREDDY | 2682.00 | 1.90 |
| SUNPHARMA | 611.15 | 1.58 |
| HCLTECH | 1419.95 | 1.42 |
| LT | 997.65 | 1.37 |

| Nifty Losers | | |
|--------------|-----------|--------|
| Company | Price(Rs) | Chg(%) |
| JPASSOCIAT | 38.95 | (3.23) |
| HDFC | 764.00 | (2.48) |
| HINDUNILVR | 563.65 | (2.42) |
| TCS | 2092.55 | (2.42) |
| BHARTIARTL | 308.00 | (2.39) |

| Vol. Shockers | Last Day (Lakh) | 2 Wk Avg. (Lakh) | Vol. Ch. (Times) |
|---------------------|-----------------|------------------|------------------|
| Dhanuka Agri | 13.79 | 0.13 | 108 |
| Sterling Hol Res-\$ | 98.42 | 1.70 | 58 |
| Vardhman Tex | 3.32 | 0.12 | 28 |
| Aditya Birla Nuv | 0.86 | 0.06 | 14 |
| SKS Microfinance | 17.18 | 1.82 | 9 |

| Indian Forex | Closing | Chg | % Chg |
|--------------|---------|---------|--------|
| USD/INR | 62.193 | (0.123) | (0.20) |
| GBP/INR | 102.140 | 0.363 | 0.36 |
| EUR/INR | 84.742 | 0.059 | 0.07 |
| JPY/INR | 60.740 | (0.270) | (0.44) |

| Precious Metal | Closing | Chg (Rs.) |
|-----------------|---------|-----------|
| Gold (Rs/10gm) | 29975 | 225 |
| Silver (Rs/1kg) | 44748 | 534 |

| Commodities | Price | % Chg. |
|------------------|--------|--------|
| Crude (US\$/BBL) | 100.0 | 0.13 |
| Brent (US\$/BBL) | 108.6 | 0.06 |
| Gold (US/oz) | 1282.7 | 1.57 |
| Silver (US\$/oz) | 20.2 | 1.20 |
| Copper (US\$/MT) | 7190.5 | (0.13) |
| Alum (US\$/MT) | 1672.0 | (0.36) |
| Zinc(US\$/MT) | 2028.0 | (0.39) |

| ADR | Cl. Values | % Chg. |
|------------------|------------|--------|
| ICICI Bank | 32.30 | 0.20 |
| HDFC Bank | 32.61 | 0.31 |
| Infosys | 57.52 | (0.15) |
| Sterlite Inds. | 6.22 | 0.00 |
| Dr. Deddy's Labs | 43.15 | 0.17 |
| Wipro | 12.85 | 0.00 |
| Tata Motors | 30.62 | 1.63 |

Market Sensor

US market stepped tentatively higher on Monday after Wall Street's best weekly performance this year, as investors waited to hear from Federal Reserve Chair Janet Yellen, who makes her first monetary policy report to lawmakers on Tuesday. Dow Jones Industrial Average was up 0.05% or 7.71 points at 15801.79. Nasdaq Composite was up 0.54% or 22.31 points at 4148.17. Standard & Poor's 500 was up 0.16% or 2.82 points at 1799.84.

Indian equity market remained lackluster and ended the first trading day of the week almost flat. Nifty ended the previous trading session with a decline of 0.16% or 9.75 points at 6053.45. On Monday's trading session, FIIs sold net Rs.455.18 Cr in cash market and sold net Rs.515.84 in derivative segment. Whereas, DII bought net Rs.294.79 Cr in cash segment.

Important events like IIP, CPI & WPI remained lined up this week followed by Interim budget next week. Till these events unfold market might remain rangebound. Coming to today's trade day crucial intraday support in Nifty exists at 6010 followed by 5970 while resistance is seen at 6110 followed by 6160.

Global News

❖ The European Union is pushing for new elections in Ukraine to break a political stalemate between the government and protesters manning street barricades for almost three months. (Bloomberg)

❖ Governments from the U.S. to Italy are boosting sales of inflation-linked bonds, wagering consumer prices will remain in check even after central banks inundated the world with cheap cash. (Bloomberg)

❖ When Robin McLane's generation hit public schools in the 1950s, there were never enough classrooms or teachers to accommodate the bulge, she said. So she's not surprised about the latest shock that boomers are delivering to the U.S. economy. (Bloomberg)

❖ Australian policy makers see little evidence of a slump in China's economic growth, defying global pessimism that helped wipe \$1.6 trillion from stocks this year. (Bloomberg)

❖ Former Bank of England Governor Mervyn King has returned to his academic roots with a study that aims to estimate what the world's interest rate is. (Bloomberg)

Economic News

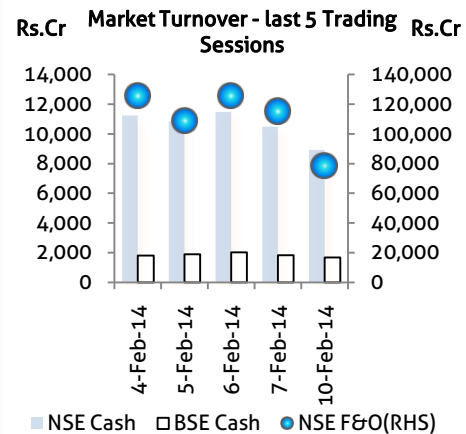
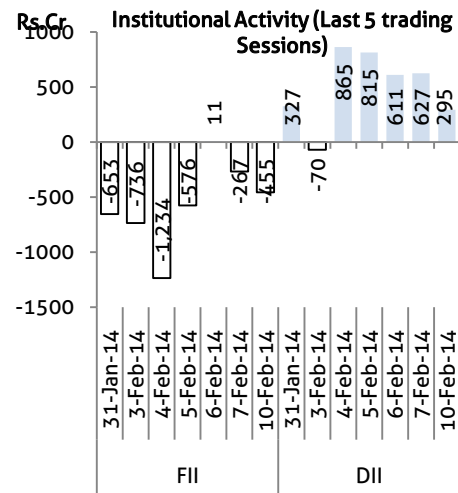
- ❖ India's farm sector is at its best, with the country set to produce a record 263.2 million tonnes of foodgrains in the current crop year, Agriculture Minister Sharad Pawar said. (BS)
- ❖ The much awaited first e-auction for Goa's iron ore would be held on February 17, 2014. The directorate of mines and geology (DMG), government of Goa has announced auction for a little over half a million tonnes (569,496 tonnes) of iron ore with Fe (iron) content ranging between 43.88% and 58%. (BS)
- ❖ President Pranab Mukherjee said agro-forestry requires innovative models to attract more investment as the sector is emerging as an environmentally sustainable food production system. (BS)
- ❖ With the end of its term around the corner, Andhra Pradesh government on Monday presented a vote on account budget with an estimated expenditure of Rs 1,83,129 crore for the year 2014-15 in the state legislative assembly. (BS)
- ❖ The Indian health ministry on Monday signed an agreement with the US Food and Drug Administration for cooperation in the field of medical products. (BS)
- ❖ Andhra Pradesh Finance Minister Anam Ramanarayana Reddy proposed a vote-on-account budget of Rs 1,83,129 crore for 2014-15, with an estimated revenue surplus of Rs 474 crore. (BS)
- ❖ Goa expects to resume iron ore mining before monsoon, its chief minister Manohar Parrikar said on Monday, as the country's top iron ore exporting state has taken action against illegal mining that prompted a ban in 2012. (BS)
- ❖ Spectrum auction entered the 43rd round of bidding on seventh day after starting off from Rs 56,554 crore in terms of value, ensuring minimum revenue of about Rs 16,750 crore in the current fiscal. (BS)

Domestic News

- ❖ Corporate Affairs Ministry is examining a report on the accounting practices of telecom major Reliance Communications, Parliament was informed. (BS)
- ❖ India's largest realty firm DLF said it has received a refund of Rs 675.81 crore from DDA following the scrapping of a project to develop an international convention centre in the national capital. (BS)
- ❖ State-run fertiliser firm FACT continues to be in the red and has recorded a net loss of Rs 168 crore till December 31 in the current fiscal, on account of high costs of RLNG gas. (BS)
- ❖ The \$108 billion Indian IT services industry is expected to have a growth rate of 13-15% for FY15, up from 11-12% registered for FY14. The prediction based on the client budget spends, in the first client survey carried out by analyst firm Offshore Insights. (BS)
- ❖ As the commercial vehicle industry continues to see pressure, Ashok Leyland Limited Managing Director Vinod K Dasari will take a cut on his salary. (BS)
- ❖ Shipping Corporation of India (SCI) has said that although its vessels were fully deployed, it was not getting good freight rates as there is a huge over supply of vessels in the market. (BS)

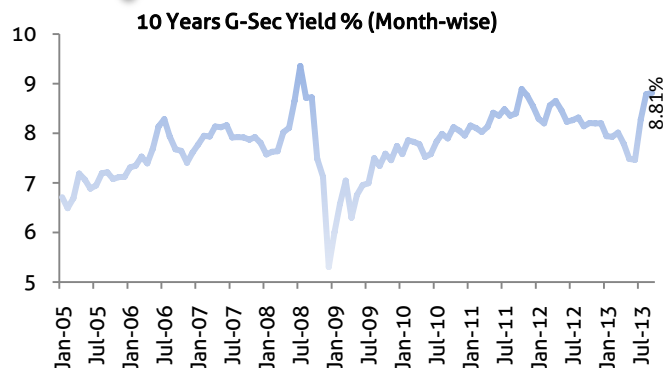
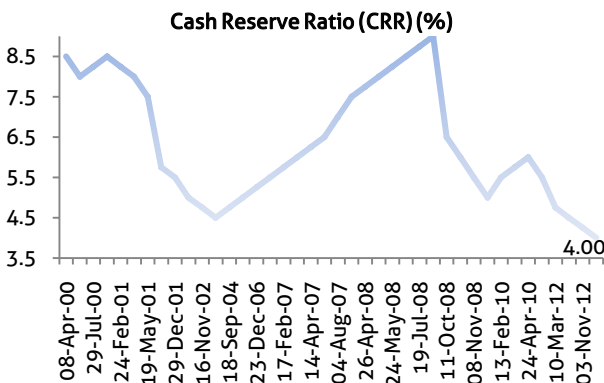
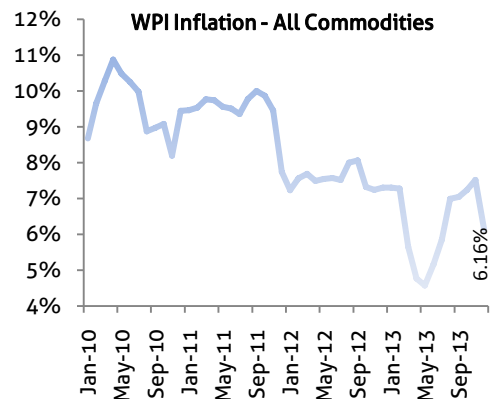
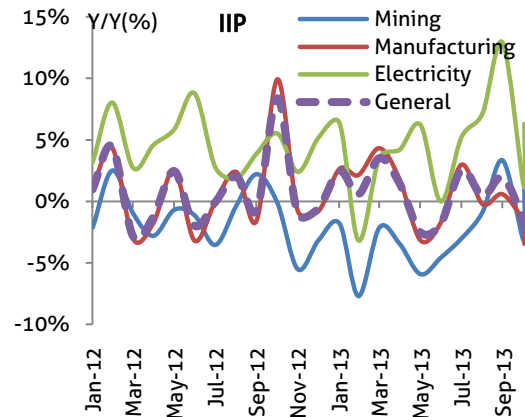
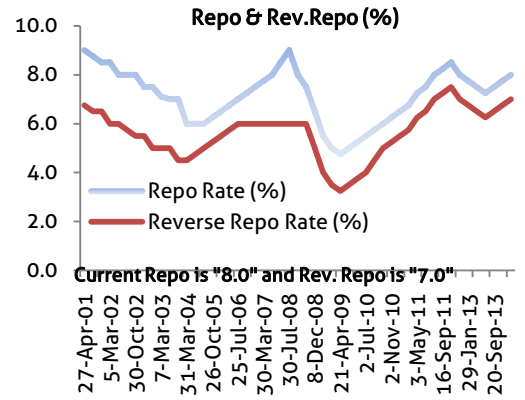
| Global Forex | Closing | Chg | % Chg |
|--------------|---------|--------|--------|
| EUR-USD | 1.3667 | 0.0021 | 0.15 |
| GBP-USD | 1.6418 | 0.0015 | 0.09 |
| USD-JPY | 102.13 | (0.13) | (0.13) |

| Bond Markets | Closing | Chg |
|----------------|---------|----------|
| 10-yr bond | 8.94 | -3.8 bps |
| Interbank call | 8.98 | 93.0 bps |



Domestic News (Cont...)

- ❖ Hindustan Construction Company (HCC) has received orders worth Rs 725 crore to execute projects including one for construction of a 2.9 km bridge in Bihar. (BS)
- ❖ Abu Dhabi National Energy Co (TAQA), leading a consortium that plans to invest around \$2 billion to acquire hydropower assets in India, expects to close the deal this quarter, three sources familiar with the matter told Reuters. (BS)
- ❖ Supreme Court on Monday directed that the "status quo" be maintained in the sale of United Spirits Ltd to British group Diageo Plc until April, when the court will hear the matter again. (BS)
- ❖ TV18 Broadcast Ltd reported consolidated net profit more than doubled to Rs 51.67 crore in the third quarter ended December 31. (BS)
- ❖ The Supreme Court ordered that there shall be no transaction regarding the sale of shares of United Spirits Ltd to British liquor major Diageo plc till April when the court will hear the multi-pronged disputes in detail. The court allowed the winding up proceedings to go on and issued notice to the various parties involved in the deal. (BS)
- ❖ Engineering company Greaves Cotton posted 10% increase in its net profit at Rs 38 crore for the quarter ended December 31, 2013 compared to Rs 34 crore in the corresponding quarter of the previous year. (BS)
- ❖ UTI Mutual Fund, country's oldest asset management company, is aiming to reclaim its leadership position in the next three to five years, Managing Director Leo Puri said here. (BS)
- ❖ Tata Motors Ltd, India's biggest automaker by revenue, beat forecasts and posted on Monday a 195 percent increase in third-quarter net profit which was boosted by strong demand for its luxury Jaguar Land Rover vehicles. (BS)
- ❖ Auto maker Mahindra & Mahindra said it has tied up with Canara Bank to provide loan facility to its customers. (BS)
- ❖ The Competition Appellate Tribunal will again hear on February 24 the appeal against fair trade watchdog CCI's approval of the Rs 2,060 crore Jet-Etihad deal. (BS)



Bulk Deal - NSE

| Date | Security Name | Client Name | Buy/Sell | Traded Qty. | Price |
|-----------|----------------------|-----------------------------|----------|-------------|--------|
| 10-Feb-14 | Panama Petrochem Ltd | PANAMA PETROCHEM LIMITED | BUY | 53802 | 154.89 |
| 10-Feb-14 | Southern Ispat Ltd | LILAC FARMS PRIVATE LIMITED | BUY | 744414 | 2.5 |
| | | | | | |
| | | | | | |

Bulk Deal - BSE

| Date | Security Name | Client Name | Buy/Sell | Traded Qty. | Price |
|-----------|-------------------|-----------------------------------------------------------------|----------|-------------|--------|
| 10-Feb-14 | Dhanuka Agri | ZOOM LEASING & FINANCE CO LIMITED | B | 1,289,500 | 186.75 |
| 10-Feb-14 | Alliance Integrat | ALLIANCE INTEGRATED METALIKS LIMITED | B | 100,000 | 155 |
| 10-Feb-14 | Adi Finechem | GEMINI PRIVATE TRUST | S | 150,000 | 70 |
| 10-Feb-14 | Sicagen India | THE ROYAL BANK OF SCOTLAND PLC AS TRUSTEE OF JUPITER INDIA FUND | S | 750,000 | 12.5 |
| 10-Feb-14 | Master Trust | SHIV NARAYAN INVESTMENTS PVT LTD | S | 230,000 | 26 |

Corporate Actions

| Scrip Code | Scrip Name | Ex-Date | Purpose | Record Date |
|------------|----------------------|-----------|-----------------------------|-------------|
| 532155 | Gail India | 10-Feb-14 | Interim Dividend - Rs.4.50 | 11-Feb-14 |
| 532240 | India Nippon | 10-Feb-14 | Interim Dividend - Rs.4.00 | 11-Feb-14 |
| 532388 | IOB | 10-Feb-14 | Interim Dividend - Rs.0.70 | 11-Feb-14 |
| 500460 | Mukand | 10-Feb-14 | Right1:1 | 11-Feb-14 |
| 513375 | Carborundum Uni | 11-Feb-14 | Interim Dividend - Rs.0.75 | 12-Feb-14 |
| 517296 | PHOENIXLL | 11-Feb-14 | Interim Dividend - Rs.5.00 | 12-Feb-14 |
| 532461 | PNB | 11-Feb-14 | Interim Dividend - Rs.10.00 | 12-Feb-14 |
| 532503 | Rajapalayam-\$ | 11-Feb-14 | Interim Dividend - Rs.5.00 | 12-Feb-14 |
| 532509 | Suprajit Engr-\$ | 11-Feb-14 | Interim Dividend - Rs.0.45 | 12-Feb-14 |
| 532890 | Take Solutions | 11-Feb-14 | Interim Dividend - Rs.0.30 | 12-Feb-14 |
| 500425 | Ambuja Cements | 12-Feb-14 | Final Dividend - Rs.2.20 | - |
| 533282 | Gravita India | 12-Feb-14 | Interim Dividend - Rs.0.30 | 13-Feb-14 |
| 512626 | Orbit Exports | 12-Feb-14 | Interim Dividend - Rs.2.00 | 13-Feb-14 |
| 517214 | S Mobility-\$ | 12-Feb-14 | Dividend - Rs.1.50 | - |
| 533281 | Techno Elec And Engg | 12-Feb-14 | Interim Dividend - Rs.- | 13-Feb-14 |
| 508494 | Warren Tea-\$ | 12-Feb-14 | Scheme of Arrangement | 13-Feb-14 |
| 500493 | Bharat Forge | 13-Feb-14 | Interim Dividend - Rs.2.00 | 14-Feb-14 |
| 531344 | Container Corp | 13-Feb-14 | Interim Dividend - Rs.7.00 | 14-Feb-14 |
| 500480 | Cummins India | 13-Feb-14 | Interim Dividend - Rs.5.00 | 15-Feb-14 |
| 523367 | DCM Shriram Cons | 13-Feb-14 | Interim Dividend - Rs.0.80 | 14-Feb-14 |
| 500257 | Lupin | 13-Feb-14 | Interim Dividend - Rs.3.00 | 14-Feb-14 |
| 535754 | ORIENT CEM | 13-Feb-14 | Interim Dividend - Rs.0.75 | 14-Feb-14 |

Global Economic Calendar

| Date | Curr. | Event | Actual | Forecast | Previous |
|-----------|-------|-----------------------------|--------|----------|----------|
| 10-Feb-14 | JPY | Household Confidence | | | 41.3 |
| 10-Feb-14 | EUR | Sentix Investor Confidence | | 11 | 11.9 |
| 11-Feb-14 | USD | Chain Store Sales (YoY) | | | |
| 11-Feb-14 | USD | Wholesale Inventories (MoM) | | 0.60% | 0.50% |
| 12-Feb-14 | CNY | Chinese Trade Balance | | | 25.60B |
| 12-Feb-14 | EUR | Industrial Production (YoY) | | 1.80% | 3.00% |
| 12-Feb-14 | USD | MBA 30-Year Mortgage Rate | | | 4.47% |
| 13-Feb-14 | USD | Initial Jobless Claims | | | 331K |
| 13-Feb-14 | JPY | CGPI (MoM) | | 0.10% | 0.30% |
| 13-Feb-14 | GBP | RICS House Price Balance | | 57% | 56% |
| 13-Feb-14 | USD | Retail Sales (MoM) | | 0.30% | 0.20% |
| 13-Feb-14 | USD | Business Inventories (MoM) | | 0.50% | 0.40% |
| 14-Feb-14 | CNY | Chinese CPI (YoY) | | | 2.50% |
| 14-Feb-14 | EUR | GDP (YoY) | | 0.40% | -0.30% |
| 14-Feb-14 | EUR | Trade Balance | | | 17.1B |
| 14-Feb-14 | USD | Import Price Index (MoM) | | 0.10% | |
| 14-Feb-14 | USD | Industrial Production (MoM) | | 0.30% | 0.30% |
| 14-Feb-14 | USD | Michigan Consumer Sentiment | | | 81.2 |

Indian Economic Calendar

| Date | Curr. | Event | Actual | Forecast | Previous |
|-----------|-------|------------------------------------|--------|----------|----------|
| 12-Feb-14 | INR | Indian CPI (YoY) | | | 9.90% |
| 12-Feb-14 | INR | Indian Industrial Production (YoY) | | | -2.10% |
| 12-Feb-14 | INR | Indian Manufacturing Output (MoM) | | | -3.50% |
| 14-Feb-14 | INR | Indian WPI (YoY) | | | 6.16% |

Disclaimer:

This report is for the personal information of the authorized recipient and does not constitute to be any investment, legal or taxation advice to you. Ashika Stock Broking Ltd., is not soliciting any action based upon it. This report is not for public distribution and has been furnished to you solely for your information and should not be reproduced or redistributed to any other person in any form. The report is based upon information that we consider reliable, but we do not represent that it is accurate or complete, and it should not be relied upon such. Ashika Stock Broking Ltd. or any of its affiliates or employees shall not be in anyway responsible for any loss or damage that may arise to any person from any inadvertent error in the information contained in this report. Ashika Stock Broking Ltd., or any of its affiliates or employees do not provide, at any time, any express or implied warranty of any kind, regarding any matter pertaining to this report, including without limitation the implied warranties of merchantability, fitness for a particular purpose, and non-infringement. The recipients of this report should rely on their own investigations. "Ashika Stock Broking Ltd., and/or its affiliates and /or employees may have interests/positions, financial or otherwise in the securities mentioned in this report."