

Equity	Latest	% Chg	NSE Sect. Indices	Latest	% Chg
Nifty	6537	0.16	CNX IT	9810	(2.44)
Sensex	21935	0.07	BANK NIFTY	12108	1.88
DowJones	16419	(0.21)	S&P CNX 500	5046	0.25
Nasdaq	4334	(0.04)	CNX FMCG	17116	(0.43)
Hangseng	22266	0.01	CNX REALTY	179	2.63
Shanghai	1990	(0.47)	CNX AUTO	5553	0.41
Nikkei	15238	0.78	CNX ENERGY	8016	0.93
Strait Times	3140	0.44	CNX PHARMA	7752	(1.85)
Kospi	1955	0.01	<b>Advances / Declines</b>	<b>BSE</b>	<b>NSE</b>
Taiwan	8691	0.30	Advances	1426	793
FTSE	6689	(0.35)	Declines	1375	669
CAC	4371	0.10	Unchanged	165	87
DAX	9266	(0.91)	Total	2966	1549

Nifty Gainers		
Company	Price(Rs)	Chg(%)
IDFC	112.30	6.85
KOTAKBANK	753.00	5.83
INDUSINDBK	468.50	5.49
JPASSOCIAT	50.30	5.01
MARUTI	1799.45	3.71

Nifty Losers		
Company	Price(Rs)	Chg(%)
TCS	2145.00	(3.75)
TATAMOTORS	395.35	(3.36)
HCLTECH	1441.00	(3.15)
SUNPHARMA	593.10	(3.14)
NMDC	128.20	(2.69)

Vol. Shockers	Last Day (Lakh)	2 Wk Avg. (Lakh)	Vol. Ch. (Times)
Neuland Lab	2.08	0.01	199
Bajaj Holdings	3.02	0.03	91
HIL	1.87	0.04	51
HCL Infosystems	83.42	8.68	10
Muthoot Fin	11.70	1.29	9

Indian Forex	Closing	Chg	% Chg
USD/INR	61.197	0.212	0.35
GBP/INR	102.351	0.281	0.27
EUR/INR	84.945	0.419	0.50
JPY/INR	59.340	0.120	0.20

Precious Metal	Closing	Chg (Rs.)
Gold (Rs/10gm)	30100	(300)
Silver (Rs/1kg)	45850	(996)

Commodities	Price	% Chg.
Crude (US\$/BBL)	101.0	(1.52)
Brent (US\$/BBL)	108.0	(0.94)
Gold (US/oz)	1340.9	0.20
Silver (US\$/oz)	20.9	(0.38)
Copper (US\$/MT)	6716.0	(3.10)
Alum (US\$/MT)	1715.0	(0.84)
Zinc(US\$/MT)	2047.0	(2.27)

ADR	Cl. Values	% Chg.
ICICI Bank	41.26	0.96
HDFC Bank	38.23	0.90
Infosys	59.65	(0.72)
Sterlite Inds.	6.22	0.00
Dr. Deddy's Labs	43.62	(0.28)
Wipro	13.65	(0.11)
Tata Motors	34.08	0.07

## Market Sensor

US market fell on Monday, bringing the S&P 500 down from its latest record, as a deceleration in China's exports had investors fretting about the health of the global economy. Dow Jones Industrial Average was down 0.21% or 34.04 points at 16418.68. Nasdaq Composite was down 0.04% or 1.78 points at 4334.45. Standard & Poor's 500 was down 0.05% or 0.87 points at 1877.17.

Indian equity market ended marginally higher supported by improving macroeconomic numbers. Nifty ended the previous trading session with a gain of 0.16% or 10.60 points at 6537.25. On Monday's trading session, FII's bought net Rs.1253.65 Cr in cash market and bought net Rs.837.75 in derivative segment. Whereas, DII sold net Rs.1044.82 Cr in cash segment.

**Coming to today's trade Nifty to remain volatile with crucial intraday support exists at 6500 followed by 6440 while resistance is seen at 6560 followed by 6590**

## Global News

❖ European Union finance ministers claimed "good progress" after talks in Brussels as they worked to break a deadlock on a euro-area bank-failure law urgently sought by the European Central Bank. (Bloomberg)

❖ Senate Democrats may boost International Monetary Fund resources in an aid package they're preparing for Ukraine, potentially setting up a dispute with the U.S. House. (Bloomberg)

❖ The amount of debt globally has soared more than 40 percent to \$100 trillion since the first signs of the financial crisis as governments borrowed to pull their economies out of recession and companies took advantage of record low interest rates. (Bloomberg)

❖ Spain's state-backed development bank says the recovery in the euro region's fourth-biggest economy is now strong enough for the lender to shift its strategy to focus on quality rather than quantity. (Bloomberg)

❖ China's credit growth trailed analysts' estimates in February, signaling a shadow-banking slowdown following a trust investment product's near default. (Bloomberg)

## Economic News

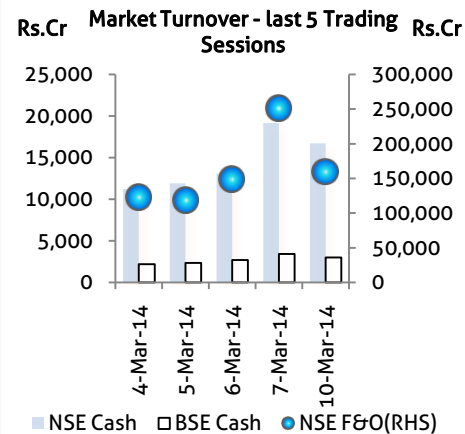
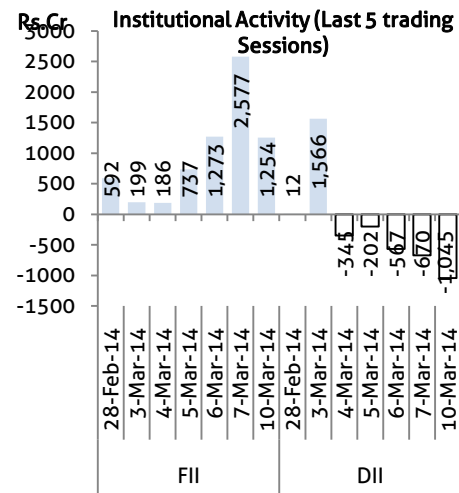
- ❖ Foreign direct investment (FDI) into the services sector declined by about 60% to \$1.59 billion in the first nine months of this financial year. (BS)
- ❖ CBI filed its first charge sheet in a Delhi court in the coal blocks allocation case against Navabharat Power Pvt Ltd for allegedly misrepresenting facts and making "fraudulent" claims to "embellish" its applications to get allotments between 2006 and 2009. (BS)
- ❖ The Ministry of Corporate Affairs has notified Section 135 and Schedule VII of the Companies Act 2013 as well as the provisions of the Companies (Corporate Social Responsibility Policy) Rules, 2014 to come into effect from April 1, 2014. (BS)
- ❖ Domestic passenger car sales increased 1.39% to 1,60,718 units in February from 1,58,512 units in the year-ago month. (BS)
- ❖ With GreenCo Rating System, an initiative of the Confederation of Indian Industry (CII) Green Building Centre, is eyeing 100 companies by end of 2015 in India for this rating. The objective of GreenCo rating system is to create a framework to define and assess how green the company is and highlight the way forward on how to turn greener. (BS)
- ❖ The fourth edition of India Aviation, an international exhibition and conference on civil aviation, will take off at Begumpet Airport in Hyderabad on March 12, 2014, according to G Ashok Kumar, joint secretary, civil aviation. (BS)
- ❖ India can aspire to quadruple its revenues from Africa to \$160 billion by 2025 by developing its presence in sectors where it has a unique value proposition in areas such as IT, agriculture, infrastructure, pharmaceuticals and consumer goods, says a McKinsey report released Monday. (BS)
- ❖ Moderating food prices are likely to have slowed inflation in India during February, giving the RBI some relief after it raised interest rates three times since September to dampen price pressures, a Reuters poll showed. (BS)

## Domestic News

- ❖ German auto major Daimler's Indian arm Daimler India Commercial Vehicles (DICV) has said that it is expecting to report profit by 2017, as the weak Indian Rupee helping exports from the Oragadam facility, near Chennai. (BS)
- ❖ Phoenix Mills has forayed into Pune's residential housing sector by announcing 'Fountainhead' near Viman Nagar on the Pune-Ahmednagar Road. The project comprises 81 three and four bedroom apartments in two 13-floor towers. The homes range from 3,000-5,100 sq ft in size and come at a base price of Rs 11,900 per sq ft. (BS)
- ❖ The asset quality of housing finance companies (HFCs) may show stress for the current fiscal, ending March 31, due to their push on riskier segments like lending against property and to self-employed people, ratings agency Icra said. (BS)
- ❖ At least three auditors have come under the scanner of the Corporate Affairs Ministry for their alleged lapses in carrying out audits of crisis-hit National Stock Exchange and its promoter group Financial Technologies. (BS)
- ❖ State-owned Coal India Ltd (CIL) is yet to enter into fuel supply pacts with 15 power units as certain issues related to them, such as change in ownership and extension of supplies, are being considered separately. (BS)

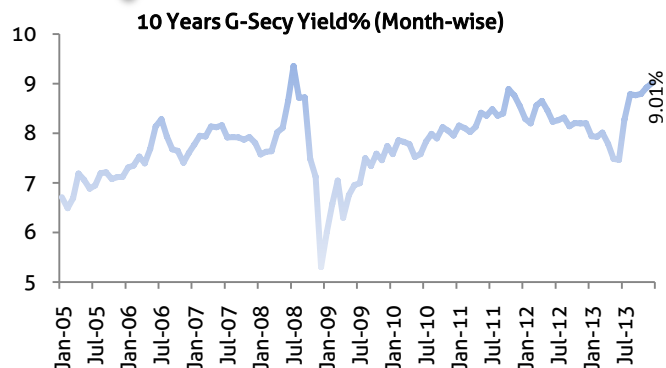
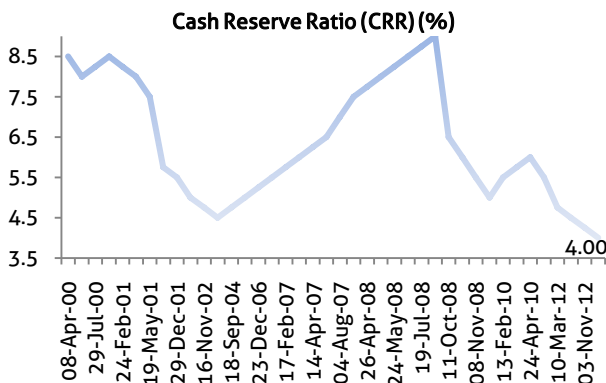
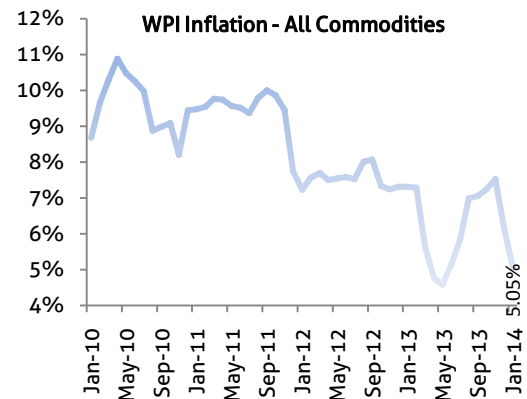
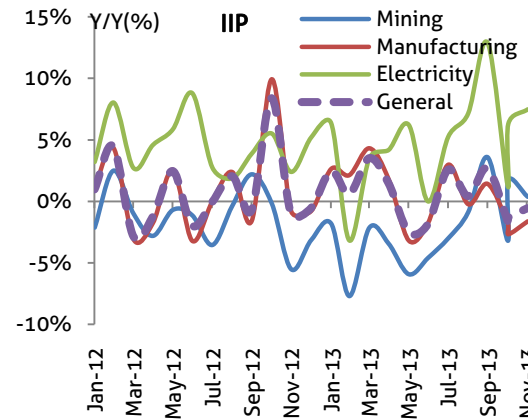
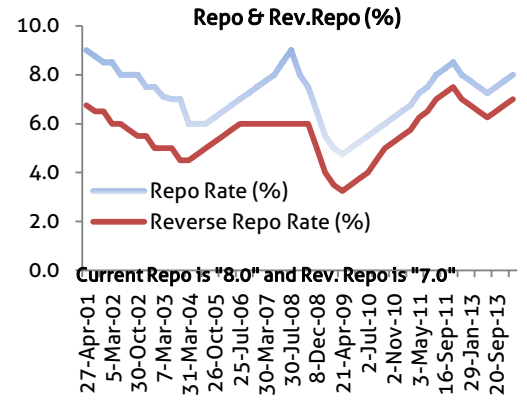
Global Forex	Closing	Chg	% Chg
EUR-USD	1.3868	(0.0009)	(0.06)
GBP-USD	1.6640	(0.0005)	(0.03)
USD-JPY	103.36	0.09	0.09

Bond Markets	Closing	Chg
10-yr bond	9.11	0.3 bps
Interbank call	7.97	-8.0 bps



## Domestic News (Cont...)

- ❖ GlaxoSmithKline plc has increased its stake in its publicly-listed pharmaceuticals subsidiary in India (GlaxoSmithKline Pharmaceuticals Limited) from 50.7% to 75%, following by the recent open offer. (BS)
- ❖ Infrastructure major Larsen & Toubro said it had won orders worth Rs 2,935 crore across various business segments in February and March. (BS)
- ❖ Avantha Group Company CG, has received an order worth euro 2 million (about Rs 17 crore) to provide two power transformers and one Gas Insulated Switchgear to Ukrainian electricity utility Odessa Oblenergo for its Marazlievskaya substation. (BS)
- ❖ Reliance Industries has made a smart up move in the last two days after being battered since mid-January this year. The fall was being attributed to Reliance's investments in the telecom business that will take some time to break-even and also on concerns over the implementation of gas price hike and benefits accruing to the company. (BS)
- ❖ Infrastructure development company SPML has bagged two orders worth Rs 721 crore from Bhavnagar Irrigation Project Division, Gujarat and South Bihar Power Distribution Company, Patna. (BS)
- ❖ Country's largest private power producer Tata Power will allot seven equity shares for every 50 shares held by an investor in the company under its Rs 2,000 crore rights issue. (BS)
- ❖ The Ministry of Petroleum and Natural Gas is examining a proposal to set up an escrow account, through which Nikoand BP's share of additional gas price will be deposited. RIL will pay a bank guarantee for its 60% share, while remaining 40% will be put into an escrow account. (BS)
- ❖ Housing finance company India Infoline Housing Finance Limited (IIHFL) announced the launch of a public bond issue looking to raise up to Rs.200 crore at a conference earlier in the day. (BS)
- ❖ Hotel Leela venture, an operator of luxury hotels, is in talks with US private equity firm KKR & Co LP to receive a loan of up to Rs 2,000 crore, a source with direct knowledge of the matter told Reuters. (BS)
- ❖ Reliance Industries Ltd plans to shut one of its four crude distillation units (CDU) for regular maintenance in March, the company said. (BS)



## Bulk Deal - NSE

Date	Security Name	Client Name	Buy/Sell	Traded Qty.	Price
10-Mar-14	GATI Limited	GAJANAN ENTERPRISES	BUY	483449	74.6
10-Mar-14	Gujarat NRE Coke Limited	GUJARAT NRE MINERAL RESOURCES LIMITED	BUY	2500000	3.4
10-Mar-14	Sangam (India) Ltd.	NIDHI MERCANTILE LIMITED	SELL	200000	34.1
10-Mar-14	Hanung Toys and Textiles	RAHUL DOSHI	BUY	163064	21.2
10-Mar-14	Cantabil Retail Ltd	MEGHA BANSAL	BUY	127333	18.0

## Bulk Deal - BSE

Date	Security Name	Client Name	Buy/Sell	Traded Qty.	Price
10-Mar-14	HIL	ACIRA CONSULTANCY PRIVATE LIMITED	S	170,548	308.0
10-Mar-14	Sanghi Inds	SAMRUDDHI INVESTORS SERVICES PRIVATE LIMITED	B	2,100,000	15.0
10-Mar-14	Neuland Lab	MALHAR TRADERS PVTATE LIMITED	B	99,000	277.0
10-Mar-14	Looks Health	ZAVERI AND CO EXPORTS	B	100,400	167.0
10-Mar-14	Nikki Global	EAST INDIA COMMODITIES PRIVATE LIMITED	B	80,000	202.0

## Corporate Actions

Scrip Code	Scrip Name	Ex-Date	Purpose	Record Date
590106	BANK BEES	10-Mar-14	Dividend - Rs.11.00	11-Mar-14
590104	JUNIOR BEES	10-Mar-14	Dividend - Rs.1.00	11-Mar-14
500126	Merck	10-Mar-14	Dividend - Rs.8.50	-
590103	NIFTY BEES	10-Mar-14	Dividend - Rs.7.00	11-Mar-14
524632	Relish Pharma	10-Mar-14	Reduction of Capital	11-Mar-14
590109	SHARIA BEES	10-Mar-14	Dividend - Rs.2.00	11-Mar-14
500092	CRISIL	11-Mar-14	Final Dividend - Rs.4.00	-
500092	CRISIL	11-Mar-14	Special Dividend With Final - Rs.6.00	-
500112	SBI	11-Mar-14	Interim Dividend - Rs.15.00	-
505200	Eicher Motors	12-Mar-14	Dividend - Rs.30.00	-
532751	Easun Reyrolle	13-Mar-14	Right12:25	17-Mar-14
532481	Noida Toll	13-Mar-14	Interim Dividend - Rs.1.50	14-Mar-14
534060	Priti Mercantile	13-Mar-14	BONUS 8:10	15-Mar-14
580001	Standard Chartered	13-Mar-14	Final Dividend - Rs.-	14-Mar-14
513335	Ahmednagar Forg	14-Mar-14	Dividend - Rs.1.00	-
530479	ATLINFRA	14-Mar-14	Stock Split from Rs.10/- to Re.1/-	18-Mar-14
530579	GOLDEN GOEN	18-Mar-14	Right9:5	19-Mar-14
517354	Havells India	19-Mar-14	Interim Dividend - Rs.-	20-Mar-14
519335	MLKPIL	19-Mar-14	Reduction of Capital	31-Mar-14
512067	Vishvjyoti Trd	19-Mar-14	Stock Split from Rs.10/- to Re.1/-	20-Mar-14
520077	Amtek Auto-\$	20-Mar-14	Dividend - Rs.0.50	-
532282	Amtek India-\$	20-Mar-14	Dividend - Rs.0.10	-

## Global Economic Calendar

Date	Curr.	Event	Actual	Forecast	Previous
10-Mar-14	JPY	Current Account n.s.a.		-1.411T	-0.639T
10-Mar-14	JPY	GDP (YoY)		1.00%	1.00%
10-Mar-14	EUR	Sentix Investor Confidence		14	13.3
11-Mar-14	GBP	Industrial Production (YoY)		3.00%	1.80%
11-Mar-14	GBP	Manufacturing Production (YoY)		3.30%	1.50%
11-Mar-14	USD	NFIB Small Business Optimism			94.1
11-Mar-14	USD	Wholesale Inventories (MoM)		0.30%	0.30%
12-Mar-14	JPY	CGPI (YoY)		2.10%	2.40%
12-Mar-14	GBP	Trade Balance		-8.70B	-7.72B
12-Mar-14	EUR	Industrial Production (YoY)		1.90%	0.50%
12-Mar-14	USD	Federal Budget Balance		-170.0B	-10.4B
13-Mar-14	JPY	Core Machinery Orders (YoY)		18.80%	6.70%
13-Mar-14	GBP	RICS House Price Balance		53%	53%
13-Mar-14	CNY	Chinese Industrial Production (YoY)		9.50%	9.70%
13-Mar-14	USD	Initial Jobless Claims			
13-Mar-14	USD	Import Price Index (MoM)		0.30%	0.10%
13-Mar-14	USD	Retail Sales (MoM)		0.20%	-0.40%
13-Mar-14	USD	Business Inventories (MoM)		0.30%	0.50%
14-Mar-14	JPY	Industrial Production (MoM)			4.00%
14-Mar-14	USD	Michigan Consumer Sentiment			81.6
14-Mar-14	USD	PPI			

## Indian Economic Calendar

Date	Curr.	Event	Actual	Forecast	Previous
11-Mar-14	INR	Indian Exports (USD)			26.75B
11-Mar-14	INR	Indian Imports (USD)			36.67B
11-Mar-14	INR	Indian Trade Balance			-9.92B
12-Mar-14	INR	Indian CPI (YoY)			8.79%
12-Mar-14	INR	Indian Industrial Production (YoY)			-0.60%
12-Mar-14	INR	Indian Manufacturing Output (MoM)			-1.60%
14-Mar-14	INR	Indian WPI (YoY)			5.05%

### Disclaimer:

This report is for the personal information of the authorized recipient and does not constitute to be any investment, legal or taxation advice to you. Ashika Stock Broking Ltd., is not soliciting any action based upon it. This report is not for public distribution and has been furnished to you solely for your information and should not be reproduced or redistributed to any other person in any form. The report is based upon information that we consider reliable, but we do not represent that it is accurate or complete, and it should not be relied upon such. Ashika Stock Broking Ltd. or any of its affiliates or employees shall not be in anyway responsible for any loss or damage that may arise to any person from any inadvertent error in the information contained in this report. Ashika Stock Broking Ltd., or any of its affiliates or employees do not provide, at any time, any express or implied warranty of any kind, regarding any matter pertaining to this report, including without limitation the implied warranties of merchantability, fitness for a particular purpose, and non-infringement. The recipients of this report should rely on their own investigations. "Ashika Stock Broking Ltd., and/or its affiliates and /or employees may have interests/positions, financial or otherwise in the securities mentioned in this report."