

Equity	Latest	% Chg	NSE Sect. Indices	Latest	% Chg
Nifty	6512	(0.39)	CNX IT	9829	0.19
Sensex	21826	(0.49)	BANK NIFTY	12043	(0.54)
DowJones	16351	(0.41)	S&P CNX 500	5027	(0.39)
Nasdaq	4307	(0.63)	CNX FMCG	17075	(0.24)
Hangseng	21959	(1.40)	CNX REALTY	184	2.31
Shanghai	2002	0.05	CNX AUTO	5517	(0.65)
Nikkei	14888	(2.21)	CNX ENERGY	7991	(0.32)
Strait Times	3108	(0.68)	CNX PHARMA	7687	(0.84)
Kospi	1936	(1.43)	Advances / Declines	BSE	NSE
Taiwan	8662	(0.47)	Advances	1248	606
FTSE	6686	(0.06)	Declines	1546	851
CAC	4350	(0.48)	Unchanged	170	90
DAX	9308	0.46	Total	2964	1547

Nifty Gainers		
Company	Price(Rs)	Chg(%)
DLF	178.25	3.88
TATAPOWER	82.05	3.66
GRASIM	2824.00	2.68
IDFC	115.10	2.63
INDUSINDBK	477.65	1.92

Nifty Losers		
Company	Price(Rs)	Chg(%)
TATASTEEL	343.10	(5.78)
HINDALCO	117.05	(4.02)
SSLT	178.60	(2.91)
GAIL	370.00	(2.91)
MARUTI	1752.00	(2.73)

Vol. Shockers	Last Day (Lakh)	2 Wk Avg. (Lakh)	Vol. Ch. (Times)
Precision Pipes	10.46	0.13	82
Dalmia Bharat	2.70	0.10	26
Liberty Shoes	4.19	0.19	22
Bharat Bijlee-\$	1.19	0.15	8
Gujarat Pipavav	25.35	3.71	7

Indian Forex	Closing	Chg	% Chg
USD/INR	60.700	(0.497)	(0.81)
GBP/INR	100.968	(1.384)	(1.35)
EUR/INR	84.159	(0.786)	(0.93)
JPY/INR	58.780	(0.560)	(0.94)

Precious Metal	Closing	Chg (Rs.)
Gold (Rs/10gm)	30186	86
Silver (Rs/1kg)	46164	314

Commodities	Price	% Chg.
Crude (US\$/BBL)	99.4	(1.58)
Brent (US\$/BBL)	108.2	0.23
Gold (US/oz)	1358.0	1.28
Silver (US\$/oz)	21.1	1.10
Copper (US\$/MT)	6720.5	0.07
Alum (US\$/MT)	1746.0	1.81
Zinc(US\$/MT)	2071.0	1.17

ADR	Cl. Values	% Chg.
ICICI Bank	40.95	(0.31)
HDFC Bank	37.37	(0.86)
Infosys	59.63	(0.02)
Sterlite Inds.	6.22	0.00
Dr. Deddy's Labs	44.38	0.76
Wipro	13.53	(0.12)
Tata Motors	33.59	(0.49)

Market Sensor

US market declined on Tuesday, with the S&P 500 retreating from its record, as news from China hit commodity prices, concern about Ukraine lingered and investors awaited signals on the direction of the economy. Dow Jones Industrial Average was down 0.41% or 67.43 points at 16351.25. Nasdaq Composite was down 0.63% or 27.26 points at 4307.19. Standard & Poor's 500 was down 0.51% or 9.54 points at 1867.63.

Indian equity market witnessed profit booking activity after five consecutive day of rally. Nifty ended the previous trading session with a decline of 0.39% or 25.35 points at 6511.90. On Tuesday's trading session, FIIs bought net Rs.1471.23 Cr in cash market and sold net Rs.46.94 in derivative segment. Whereas, DII sold net Rs.1331.73 Cr in cash segment.

Coming to today's trade Nifty to remain volatile with crucial intraday support exists at 6450 followed by 6420 while resistance is seen at 6560 followed by 6590

Global News

❖ The Made in China label is losing traction with its two biggest customers. After three decades of gains, China's share of U.S. imports has plateaued and in Europe it's in decline. (Bloomberg)

❖ European finance ministers made few concessions to break a deadlock on a bank-failure bill, as the European Central Bank warned that failure to enact it would hinder efforts to combat fragmentation of the financial sector. (Bloomberg)

❖ Job openings in the U.S. increased less than expected in January, a sign labor-market cooling from late 2013 persisted as severe winter weather hammered the eastern and midwestern U.S. (Bloomberg)

❖ U.K. factory production rose more than forecast in January, adding to evidence of what Bank of England Governor Mark Carney said is a broadening recovery. (Bloomberg)

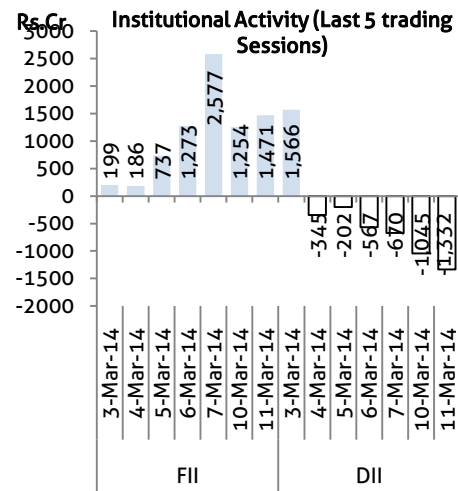
❖ The Bank of Japan maintained record easing, keeping ammunition as an April sales-tax bump threatens to trigger the deepest one-quarter contraction since the March 2011 earthquake. (Bloomberg)

Economic News

- ❖ The economy received a sudden jolt as the country's merchandise exports declined once again after a span of seven months. Exports came down by 3.67% at \$25.68 billion in February compared to \$26.66 billion in the same month last year significantly weakening chances of meeting the export target of \$325 billion in the present fiscal. (BS)
- ❖ With no strategic pool of funds available for the oil sector, the Ministry of Petroleum and Natural Gas has proposed turning the Oil Industry Development Board (OIDB) into a financial institution for the petroleum sector similar to Power Finance Corporation for power sector. To provide funds for OIDB, it has also asked for a share in the oil cess. (BS)
- ❖ Onion exports in January fell marginally to 1.21 lakh tonnes compared with the previous month due to lower export value realisation. (BS)
- ❖ Government has put on ice plans to join major emerging market bond indexes that would require it to remove restrictions on foreign capital inflows, two sources said, signalling easing concerns about the rupee and the balance of payments. (BS)
- ❖ India's iron ore exports declined by a staggering 27.56% in the first 11 months of the current fiscal due to restriction on mining across all major states coupled with high export duty making shipment unviable. (BS)
- ❖ Financial Planning Standards Board (FPSB) India, the professional body for financial planners, nominated Justice (Retd.) B N Srikrishna, as the chairman of the Board of FPSB India for 2014-2015. He takes over from Dharendra Swarup, former chairman of Pension Fund Regulatory and Development Authority (PFRDA). (BS)

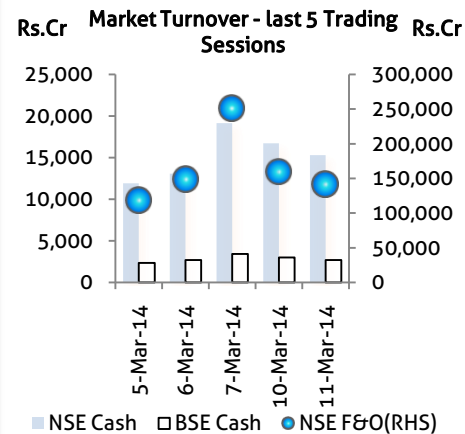
Global Forex	Closing	Chg	% Chg
EUR-USD	1.3859	(0.0001)	(0.01)
GBP-USD	1.6627	0.0001	0.06
USD-JPY	103.02	0.00	0.00

Bond Markets	Closing	Chg
10-yr bond	9.07	-4.3 bps
Interbank call	8.05	8.0 bps



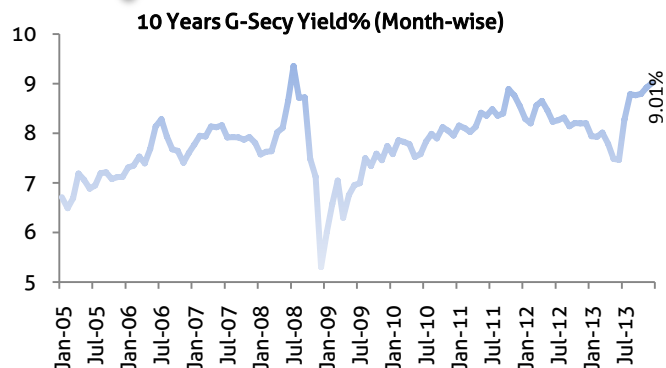
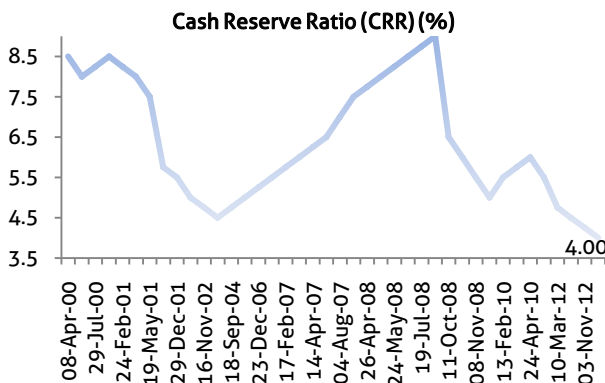
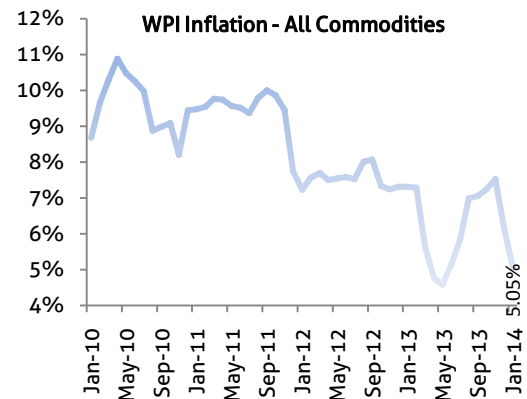
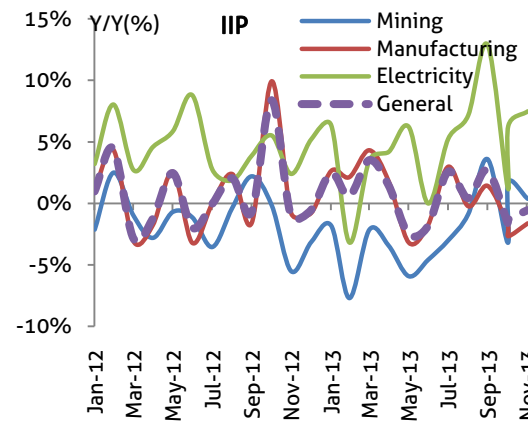
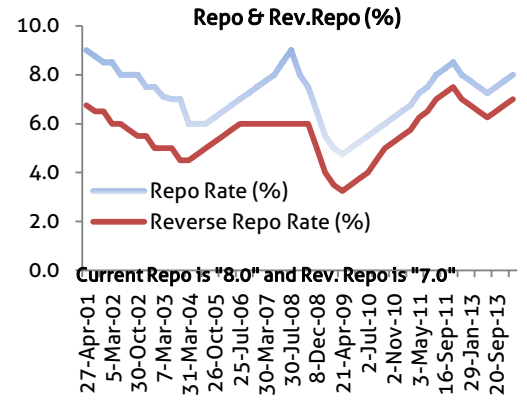
Domestic News

- ❖ Private life insurer IDBI Federal Life Insurance announced the appointment of Vighnesh Shahane as the Chief Executive Officer & Whole Time Director of the Company. (BS)
- ❖ The Rs 2,060-crore Jet-Etihad deal seems to have hit a fresh round of regulatory turbulence, with the Abu Dhabi carrier rejecting any obligation to make an open offer for minority shareholders of the Indian carrier. (BS)
- ❖ When Aam Aadmi Party's leader Arvind Kejriwal decided to resign as Chief Minister of Delhi, he left behind a system in chaos along with unfulfilled promises. (BS)
- ❖ Days after being granted bail, vice president of Saradha media group Somnath Dutta was arrested in connection with a forgery case related to Saradha chit fund scam, the police said. (BS)
- ❖ Realty major Godrej Properties has signed an agreement with group firm Godrej & Boyce for the development of a premium housing project on the latter's land parcel at Vikhroli in Mumbai. (BS)
- ❖ State-owned iron ore miner NMDC's sales rose 17% to 27.43 million tonnes in the first 11 months of the current financial year on higher demand from steel makers. (BS)
- ❖ The Oil Ministry has sought legal opinion to ascertain if British energy giant BP and Canada's Niko are part of the arbitration initiated by their partner Reliance Industries against the government levying penalties for KG-D6 gas production falling short of target. (BS)



Domestic News (Cont...)

- ❖ FMCG major Hindustan Unilever Ltd said CFO Sridhar Ramamurthy will be elevated as Senior Vice President Finance at parent Unilever from July 1. (BS)
- ❖ Even as Maruti Suzuki plans to push ahead with the controversial Gujarat plant proposal, mutual fund houses have decided not to go down without a fight. (BS)
- ❖ Hindustan Aeronautics Limited (HAL), a public sector undertaking under the ministry of defence, will be showcasing its achievements in the civil aviation sector at India Aviation 2014, scheduled to be held in Hyderabad from March 12. (BS)
- ❖ Prime Focus Technologies (PFT), the technology subsidiary of Prime Focus announced that it has signed a definitive agreement to acquire DAX, a leading provider of cloud-based production workflow and media asset management applications to the entertainment industry for a base consideration of \$9.1 million (Rs 56 crore) in a uniquely structured performance linked transaction. (BS)
- ❖ Bannari Amman Spinning Mills, part of the Bannari Amman Group, has entered into a Memorandum of Understanding (MOU) with the Tamil Nadu government for setting up of a textile project near Dindigul in the state. (BS)
- ❖ Jindal Power, promoted by Jindal Steel & Power has achieved full load capacity for first unit of 600 MW of the 600X4 MW expansion project to its existing 1,000 MW power plant at Tamnar in Raigarh District of Chhattisgarh. (BS)
- ❖ The Ministry of Coal has asked Jindal Steel & Power Ltd (JSPL) to submit a bank guarantee (BG) of Rs 68.53 crore for its Utkal B-1 coal block allocated in Odisha. (BS)
- ❖ The three-day proposed strike by Coal India Ltd (CIL) executives from March 13 seems imminent as negotiations with the management failed. (BS)
- ❖ Coal India (CIL) has postponed its board meeting scheduled on Thursday by a week on account of a planned three-day strike by company executives. (BS)
- ❖ Raising fresh concerns over Maruti allowing parent Suzuki to undertake a Gujarat project on its own, institutional shareholders have asked the carmaker's board to quash this "oppressive transaction" to save the company from becoming a "shell" entity. (BS)



Bulk Deal - NSE

Date	Security Name	Client Name	Buy/Sell	Traded Qty.	Price
11-Mar-14	Page Industries Limited	CARTICA CAPITAL LIMITED	BUY	280000	6000.0
11-Mar-14	Dalmia Bharat Limited	BORON INDIA LIMITED	SELL	3576470	210.0
11-Mar-14	Page Industries Limited	HDFC EQUITY FUND	SELL	69723	6000.0
11-Mar-14	Vardhman Textiles Limited	BARING INDIA PRIVATE EQUITY FUND III LISTED INVESTMENTS LTD	BUY	762964	327.9
11-Mar-14	IVRCL Limited	TRANSGLOBAL SECURITIES LTD.	BUY	1636118	12.5

Bulk Deal - BSE

Date	Security Name	Client Name	Buy/Sell	Traded Qty.	Price
11-Mar-14	Precision Pipes	KALINDI FARMS PRIVATE LIMITED	B	1,000,000	55.3
11-Mar-14	Nikki Global	AFFLUENCE COMMODITIES PVT.LTD.	B	130,000	190.0
11-Mar-14	Midland Poly	RAJENDRA PRASAD RITOLIA	S	719,199	30.3
11-Mar-14	Gloster	CREDWYN HOLDINGS INDIA PVT LTD	S	150,550	140.2
11-Mar-14	Ashika Credit Cap	RAM NARESH AGARWAL	B	175,000	100.4

Corporate Actions

Scrip Code	Scrip Name	Ex-Date	Purpose	Record Date
500092	CRISIL	11-Mar-14	Final Dividend - Rs.4.00	-
500092	CRISIL	11-Mar-14	Special Dividend With Final - Rs.6.00	-
500112	SBI	11-Mar-14	Interim Dividend - Rs.15.00	-
505200	Eicher Motors	12-Mar-14	Dividend - Rs.30.00	-
532751	Easun Reyrolle	13-Mar-14	Right12:25	17-Mar-14
532481	Noida Toll	13-Mar-14	Interim Dividend - Rs.1.50	14-Mar-14
534060	Priti Mercantile	13-Mar-14	BONUS 8:10	15-Mar-14
580001	Standard Chartered	13-Mar-14	Final Dividend - Rs.-	14-Mar-14
513335	Ahmednagar Forg	14-Mar-14	Dividend - Rs.1.00	-
530479	ATLINFRA	14-Mar-14	Stock Split from Rs.10/- to Re.1/-	18-Mar-14
530579	GOLDEN GOEN	18-Mar-14	Right9:5	19-Mar-14
531731	Aarya Global Shares	19-Mar-14	Consolidation of Shares	20-Mar-14
517354	Havells India	19-Mar-14	Interim Dividend - Rs.-	20-Mar-14
519335	MLKPIL	19-Mar-14	Reduction of Capital	31-Mar-14
500400	Tata Power	19-Mar-14	Right7:50	20-Mar-14
512067	Vishvjyoti Trd	19-Mar-14	Stock Split from Rs.10/- to Re.1/-	20-Mar-14
520077	Amtek Auto-\$	20-Mar-14	Dividend - Rs.0.50	-
532282	Amtek India-\$	20-Mar-14	Dividend - Rs.0.10	-
532178	Engineers India	20-Mar-14	Interim Dividend - Rs.-	21-Mar-14
532129	Hexaware Tech	20-Mar-14	Final Dividend - Rs.1.00	-
524330	Jayant Agro	20-Mar-14	Interim Dividend - Rs.2.50	21-Mar-14
500249	KSB Pumps	20-Mar-14	Final Dividend - Rs.4.50	-

Global Economic Calendar

Date	Curr.	Event	Actual	Forecast	Previous
10-Mar-14	JPY	Current Account n.s.a.		-1.411T	-0.639T
10-Mar-14	JPY	GDP (YoY)		1.00%	1.00%
10-Mar-14	EUR	Sentix Investor Confidence		14	13.3
11-Mar-14	GBP	Industrial Production (YoY)		3.00%	1.80%
11-Mar-14	GBP	Manufacturing Production (YoY)		3.30%	1.50%
11-Mar-14	USD	NFIB Small Business Optimism			94.1
11-Mar-14	USD	Wholesale Inventories (MoM)		0.30%	0.30%
12-Mar-14	JPY	CGPI (YoY)		2.10%	2.40%
12-Mar-14	GBP	Trade Balance		-8.70B	-7.72B
12-Mar-14	EUR	Industrial Production (YoY)		1.90%	0.50%
12-Mar-14	USD	Federal Budget Balance		-170.0B	-10.4B
13-Mar-14	JPY	Core Machinery Orders (YoY)		18.80%	6.70%
13-Mar-14	GBP	RICS House Price Balance		53%	53%
13-Mar-14	CNY	Chinese Industrial Production (YoY)		9.50%	9.70%
13-Mar-14	USD	Initial Jobless Claims			
13-Mar-14	USD	Import Price Index (MoM)		0.30%	0.10%
13-Mar-14	USD	Retail Sales (MoM)		0.20%	-0.40%
13-Mar-14	USD	Business Inventories (MoM)		0.30%	0.50%
14-Mar-14	JPY	Industrial Production (MoM)			4.00%
14-Mar-14	USD	Michigan Consumer Sentiment			81.6
14-Mar-14	USD	PPI			

Indian Economic Calendar

Date	Curr.	Event	Actual	Forecast	Previous
11-Mar-14	INR	Indian Exports (USD)			26.75B
11-Mar-14	INR	Indian Imports (USD)			36.67B
11-Mar-14	INR	Indian Trade Balance			-9.92B
12-Mar-14	INR	Indian CPI (YoY)			8.79%
12-Mar-14	INR	Indian Industrial Production (YoY)			-0.60%
12-Mar-14	INR	Indian Manufacturing Output (MoM)			-1.60%
14-Mar-14	INR	Indian WPI (YoY)			5.05%

Disclaimer:

This report is for the personal information of the authorized recipient and does not constitute to be any investment, legal or taxation advice to you. Ashika Stock Broking Ltd., is not soliciting any action based upon it. This report is not for public distribution and has been furnished to you solely for your information and should not be reproduced or redistributed to any other person in any form. The report is based upon information that we consider reliable, but we do not represent that it is accurate or complete, and it should not be relied upon such. Ashika Stock Broking Ltd. or any of its affiliates or employees shall not be in anyway responsible for any loss or damage that may arise to any person from any inadvertent error in the information contained in this report. Ashika Stock Broking Ltd., or any of its affiliates or employees do not provide, at any time, any express or implied warranty of any kind, regarding any matter pertaining to this report, including without limitation the implied warranties of merchantability, fitness for a particular purpose, and non-infringement. The recipients of this report should rely on their own investigations. "Ashika Stock Broking Ltd., and/or its affiliates and /or employees may have interests/positions, financial or otherwise in the securities mentioned in this report."