

Equity	Latest	% Chg	NSE Sect. Indices	Latest	% Chg
Nifty	6048	0.79	CNX IT	9855	1.38
Sensex	20367	0.86	BANK NIFTY	10204	0.67
DowJones	16154	0.79	S&P CNX 500	4678	0.60
Nasdaq	4244	0.08	CNX FMCG	16575	0.58
Hangseng	22298	0.60	CNX REALTY	155	0.06
Shanghai	2116	0.83	CNX AUTO	5199	0.53
Nikkei	14313	(1.53)	CNX ENERGY	7501	1.28
Strait Times	3039	(0.04)	CNX PHARMA	7726	(0.15)
Kospi	1940	0.69	Advances / Declines	BSE	NSE
Taiwan	8514	0.54	Advances	1185	630
FTSE	6664	0.06	Declines	1400	752
CAC	4340	0.63	Unchanged	144	102
DAX	9662	0.68	Total	2729	1484

Nifty Gainers		
Company	Price(Rs)	Chg(%)
TATAMOTORS	389.65	3.64
GAIL	359.70	2.43
NTPC	132.65	1.96
INFY	3654.95	1.93
RELIANCE	821.90	1.80

Nifty Losers		
Company	Price(Rs)	Chg(%)
BAJAJ-AUTO	1844.80	(3.05)
BHEL	148.40	(2.34)
AMBUJACEM	150.50	(2.30)
ULTRACEMCO	1653.00	(2.10)
CIPLA	372.80	(1.97)

Vol. Shockers	Last Day (Lakh)	2 Wk Avg. (Lakh)	Vol. Ch. (Times)
Redington India	10.18	1.23	8
Infotech Enter	1.49	0.19	8
Future Retail	57.61	8.66	7
Gateway Distr	4.45	0.89	5
Balkrishna Inds-\$	1.90	0.39	5

Indian Forex	Closing	Chg	% Chg
USD/INR	62.277	0.005	0.01
GBP/INR	103.666	0.201	0.19
EUR/INR	85.176	0.305	0.36
JPY/INR	61.220	0.200	0.33

Precious Metal	Closing	Chg (Rs.)
Gold (Rs/10gm)	30100	100
Silver (Rs/1kg)	45721	1096

Commodities	Price	% Chg.
Crude (US\$/BBL)	100.3	(0.06)
Brent (US\$/BBL)	109.1	0.47
Gold (US/oz)	1318.6	0.90
Silver (US\$/oz)	21.4	3.13
Copper (US\$/MT)	7175.5	0.26
Alum (US\$/MT)	1710.5	1.39
Zinc(US\$/MT)	2047.0	1.29

ADR	Cl. Values	% Chg.
ICICI Bank	33.51	0.20
HDFC Bank	32.97	0.24
Infosys	59.30	0.92
Sterlite Inds.	6.22	0.00
Dr. Deddy's Labs	42.25	0.23
Wipro	12.97	0.08
Tata Motors	32.27	1.23

Market Sensor

US market capped the week with impressive gains as investors seemed to shrug off a batch of mixed economic reports. All three major averages posting their biggest weekly gain of the year. Dow Jones Industrial Average was up 0.79% or 126.80 points at 16154.39. Nasdaq Composite was up 0.08% or 3.35 points at 4244.03. Standard & Poor's 500 was up 0.48% or 8.80 points at 1838.63.

Indian equity market recovered from days low to end the previous trading session on a positive note. Nifty ended the previous trading session with a gain of 0.79% or 47.25 points at 6048.35. On Friday's trading session, FII sold net Rs.15.86 Cr in cash market and sold net Rs.416.54 in derivative segment. Whereas, DII sold net Rs.45 Cr in cash segment.

Coming to today's trade day Nifty to remain volatile with crucial intraday support in Nifty exists at 5980 followed by 5930 while resistance is seen at 6090 followed by 6130.

Global News

❖ China's inflation stayed subdued in January while factory-gate prices extended the longest drop since the 1990s, in a sign of moderating demand in the world's second-largest economy (Bloomberg)

❖ Factory production in the U.S. unexpectedly declined in January by the most since May 2009, adding to evidence severe winter weather weighed on the economy. (Bloomberg)

❖ Portugal's gross domestic product expanded at a faster pace in the three months through December as it grew for a third quarter (Bloomberg)

❖ Italy's economy expanded in the three months through December, marking the first quarterly gain in more than two years as the country began to recover from its longest recession on record. (Bloomberg)

❖ The French economy expanded in the fourth quarter as President Francois Hollande struggled to secure a sustainable recovery and reduce unemployment. (Bloomberg)

Economic News

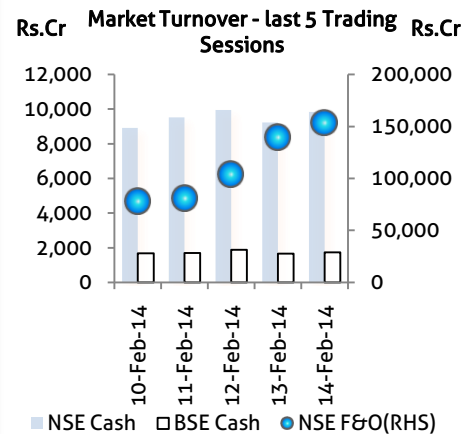
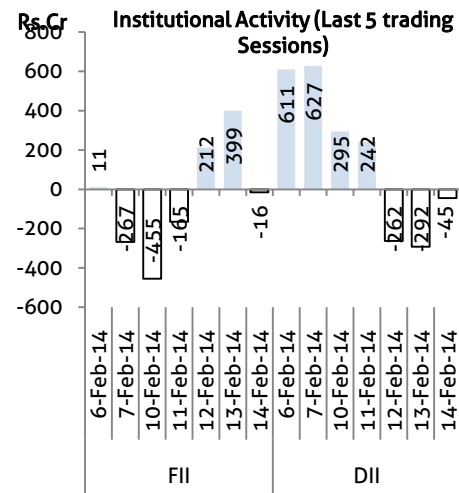
- ❖ Environment Minister M Veerappa Moily said he followed all rules and did not compromise on any norm in granting forest and environment clearance to a host of projects since taking over one and a half months back (BS)
- ❖ The Japan International Cooperation Agency (JICA), a governmental agency of Japan, has said that the Delhi-Mumbai Industrial corridor (DMIC) was a good lesson for the Agency and said it will not adopt the same strategy for other corridors, especially on Chennai-Bengaluru-Industrial Corridor (CBIC). (BS)
- ❖ The Japan International Cooperation Agency (JICA), a governmental agency of Japan, has committed loans worth Rs 20,000 crore in 2012-13 to India. However, it could disburse only Rs 6,800 crore. A senior official from the agency attributed the slowdown in the off-take due to rupee depreciation and project delays. (BS)
- ❖ Regulators' functions should not contradict each other and their actions should not result in unnecessary burden on economy, Competition Commission Chairman Ashok Chawla said. (BS)
- ❖ The drop in January inflation has prompted India Inc to press the Reserve Bank to ease interest rates to perk up investment sentiment and kick start growth. (BS)
- ❖ The National Highways Authority of India has started discussions with leading banks including ICICI Bank to partner the road regulator for electronic collection of toll across highways in the country. NHAI is now putting together a service agreement whereby banks will collect the funds and then distribute the same to various concessionaires. (BS)
- ❖ Karnataka's budget for ensuing 2014-15 spares the common man from new taxes but taxes those who drink beer and domestically-produced liquor. (BS)
- ❖ Government has approved the setting up of semiconductor wafer plants by two consortia, including IBM Corp, Israel's TowerJazz and STMicroelectronics NV, costing a total of Rs 63,410 crore. (BS)

Domestic News

- ❖ Crompton Greaves has launched a new set of energy efficient pumps which can be switched on and off remotely through a mobile phone call or a text message (BS)
- ❖ Gujarat chief minister Narendra Modi inaugurated what he called an airport-like bus terminus at Vadodara, around 100 km from Ahmedabad. (BS)
- ❖ Education services company Educomp Solutions has posted a third quarter net loss of Rs 87.6 crore for the period ended December 31, 2013 compared to net profit of Rs 8.01 crore for the same period last year. (BS)
- ❖ Wind turbine maker Suzlon, which under went a restructuring of about Rs 9500 crore debt, posted a consolidated loss of Rs 1075 crore for quarter ended December as against Rs 1154 crore loss for the same period last year. Revenue rose to Rs 5063 crore in the last quarter as against Rs 4074 crore in the same period last year. (BS)
- ❖ Infrastructure major Punj Lloyd fell into the red after the company reported net loss of Rs 140 crore during the October-December quarter on lower income and higher expenses. (BS)

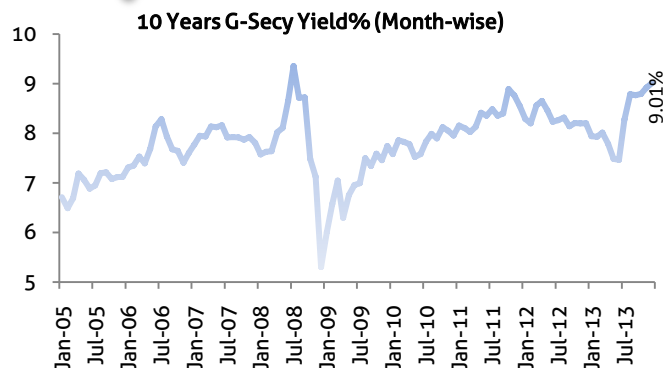
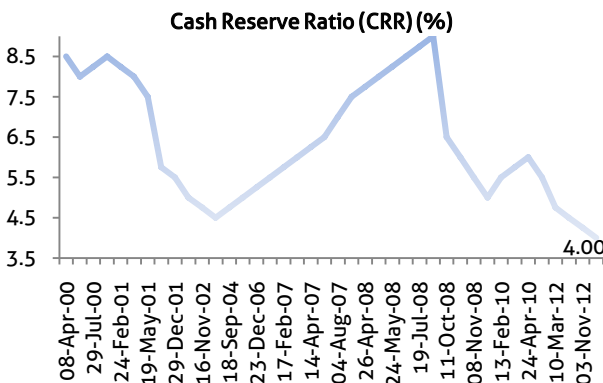
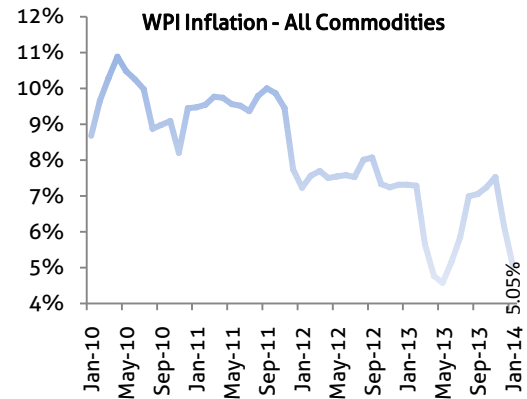
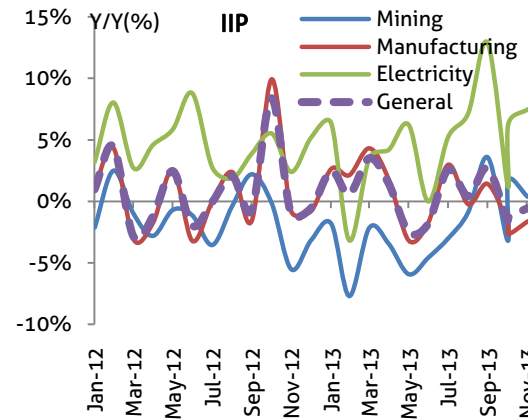
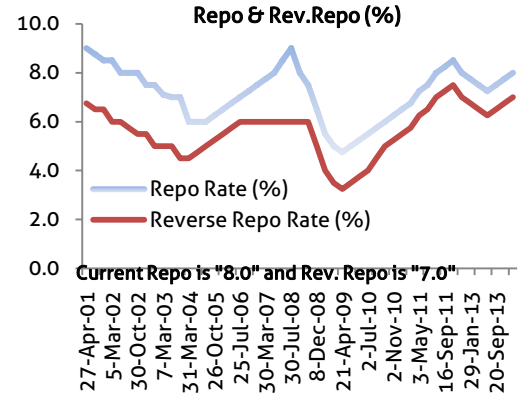
Global Forex	Closing	Chg	% Chg
EUR-USD	1.3693	0.0012	0.09
GBP-USD	1.6747	0.0088	0.53
USD-JPY	101.80	(0.37)	(0.36)

Bond Markets	Closing	Chg
10-yr bond	9.12	1.6 bps
Interbank call	8.91	-9.0 bps



Domestic News (Cont...)

- ❖ Telecom giant Vodafone and television network Star India have entered strategic partnership to create the multi-sports offering, 'Vodafone Sports' portal on Vodafone Live. (BS)
- ❖ The fertiliser subsidy for the year 2014-15 has been pegged at around Rs 70,000 crore, marginally higher than Rs 68,000 crore doled out in 2013-14 as per estimates of fertilizer ministry. (BS)
- ❖ Cable and broadband service provider Hathway Cable and Datacom Ltd posted loss of Rs 36.8 crore for Q3 FY14 as compared to loss of Rs 7.4 crore in the corresponding quarter last fiscal. The EBITDA margin for the quarter came down from 23% in FY13 to 16% in FY14. (BS)
- ❖ Though the IT industry body NASSCOM has given a robust outlook for the Indian IT-BPO industry for the next fiscal, Mohit Thukral, Senior Vice President at Genpact does not see the overall BPO industry grow in double digits for at least the next two years. (BS)
- ❖ Being a consistent number one on the Hindi general entertainment channel (GEC), Star Plus has had only itself as competition for a long time now. However, the channel refused to get complacent and scaled a new high last week (Week 6 of 2014; February 1 to February 8) by recording the highest ever weekly viewership by a Hindi GEC. (BS)
- ❖ The Board of Ennore Port Ltd (EPL) gave its nod for Adani Ports & Special Economic Zone to build a Rs 1,270 crore container terminal at Ennore Port, around 45 kms from Chennai. (BS)
- ❖ In an attempt to address issues relating to skills-gap, industry body Nasscom launched a 'Talent Demand Supply Analysis' report for the Indian information technology (IT) and business process management (BPM) industry. (BS)
- ❖ Technology giant IBM has started a restructuring process, which would see as many as 15,000 jobs being cut globally, including India, Brazil and the European region. (BS)
- ❖ Tours and travel firm Cox & Kings reported over nine-fold jump in net profit to Rs 30.91 crore for the third quarter ended December 31, 2013. (BS)
- ❖ Mahindra & Mahindra Ltd, India's biggest utility vehicle maker by sales, posted a 12% rise in quarterly profit, matching estimates as strong tractor sales offset slowing demand for its passenger and commercial vehicles. (BS)



Bulk Deal - NSE

Date	Security Name	Client Name	Buy/Sell	Traded Qty.	Price
14-Feb-14	Pantaloon Retail (India)	J P M S L A/c Copthall Mauritius Investment Ltd	BUY	1465000	91.88
14-Feb-14	Nitco Limited	SANJEEV RAJ KAPOOR	BUY	1200000	13.85
14-Feb-14	Thinksoft Global Ser Ltd	RAVINDRA RAICHAND DHARAMSHI	BUY	100000	256.73
14-Feb-14	Nitco Limited	ALBULA INVESTMENT FUND LTD	SELL	1200940	13.85
14-Feb-14	Thinksoft Global Ser Ltd	AMIT GOEL	SELL	66028	256.8

Bulk Deal - BSE

Date	Security Name	Client Name	Buy/Sell	Traded Qty.	Price
14-Feb-14	Dhanus Tech	NAROIS IMPEX PRIVATE LIMITED	S	2,962,054	0.07
14-Feb-14	Sterling Hol Res-\$	UTPAL HEMENDRA SHETH	S	766,000	93
14-Feb-14	Sybyl Inds-\$	LILAC FARMS PRIVATE LIMITED	S	464,555	1.24
14-Feb-14	SHRSHA TEX	RAHUL MANISH KAPADIA	S	459,560	33.88
14-Feb-14	Mastek	MERRILL LYNCH CAPITAL MARKETS ESPANA SA SV	B	124,547	197.79

Corporate Actions

Scrip Code	Scrip Name	Ex-Date	Purpose	Record Date
590006	Amrutanjan Health-\$	17-Feb-14	Interim Dividend - Rs.1.00	19-Feb-14
521220	Damodar Ind-\$	17-Feb-14	Interim Dividend - Rs.1.40	19-Feb-14
507717	Dhanuka Agri	17-Feb-14	Interim Dividend - Rs.2.00	18-Feb-14
500620	Great Eastern Sh	17-Feb-14	Interim Dividend - Rs.4.00	18-Feb-14
501455	Greaves Cotton	17-Feb-14	2nd Interim Dividend - Rs.0.40	18-Feb-14
522249	Mayur Uniquoter-\$	17-Feb-14	3rd Interim Dividend - Rs.1.40	18-Feb-14
522241	MM Forgings-\$	17-Feb-14	Interim Dividend - Rs.2.00	18-Feb-14
532641	NDL	17-Feb-14	Interim Dividend - Rs.0.60	18-Feb-14
526371	NMDC	17-Feb-14	2nd Interim Dividend - Rs.5.50	18-Feb-14
532827	Page Inds	17-Feb-14	3rd Interim Dividend - Rs.15.00	19-Feb-14
532300	Wockhardt	17-Feb-14	2nd Interim Dividend - Rs.5.00	19-Feb-14
533271	Ashoka Buildcon	18-Feb-14	Interim Dividend - Rs.0.70	20-Feb-14
532139	G Tech Info	18-Feb-14	Reduction of Capital	20-Feb-14
524735	Hikal	18-Feb-14	Interim Dividend - Rs.2.00	20-Feb-14
531213	Manappuram Finance	18-Feb-14	Interim Dividend - Rs.0.45	20-Feb-14
500113	SAIL	18-Feb-14	Interim Dividend - Rs.2.02	20-Feb-14
533229	Bajaj Corp	20-Feb-14	Interim Dividend - Rs.6.50	21-Feb-14
500039	Banco Products-\$	20-Feb-14	Interim Dividend - Rs.1.70	21-Feb-14
526881	Financial Tech	20-Feb-14	Interim Dividend - Rs.-	21-Feb-14
532129	Hexaware Tech	20-Feb-14	Interim Dividend - Rs.7.50	21-Feb-14
532955	REC	20-Feb-14	Interim Dividend - Rs.7.75	21-Feb-14
532908	Sharon Bio-\$	20-Feb-14	BONUS 1:1	21-Feb-14

Global Economic Calendar

Date	Curr.	Event	Actual	Forecast	Previous
17-Feb-14	JPY	GDP (YoY)		2.80%	1.10%
17-Feb-14	JPY	Industrial Production (MoM)			1.10%
18-Feb-14	EUR	Current Account n.s.a.		20.0B	27.4B
18-Feb-14	GBP	CPI (YoY)		2.00%	2.00%
18-Feb-14	GBP	PPI Input (YoY)		-2.90%	-1.20%
18-Feb-14	GBP	PPI Output (YoY)		0.80%	1.00%
18-Feb-14	GBP	RPI (YoY)		2.70%	2.70%
18-Feb-14	USD	NY Empire State Manufacturing Index		10	12.51
18-Feb-14	USD	TIC Net Long-Term Transactions			-29.3B
19-Feb-14	GBP	Claimant Count Change		-20.0K	-24.0K
19-Feb-14	GBP	Unemployment Rate		7.10%	7.10%
19-Feb-14	USD	Jobless Claims Change			
19-Feb-14	USD	MBA 30-Year Mortgage Rate			4.45%
19-Feb-14	USD	Building Permits (MoM)			-2.60%
19-Feb-14	USD	Housing Starts (MoM)			-9.80%
19-Feb-14	USD	PPI (YoY)		1.20%	1.20%
20-Feb-14	JPY	Trade Balance		-2,489B	-1,302B
20-Feb-14	CNY	Chinese HSBC Manufacturing PMI			49.5
20-Feb-14	EUR	Manufacturing PMI		54	54
20-Feb-14	EUR	Services PMI		51.9	51.6
20-Feb-14	GBP	Retail Sales (YoY)		5.00%	5.30%
20-Feb-14	USD	Initial Jobless Claims			
20-Feb-14	USD	CPI (YoY)		1.50%	1.50%
20-Feb-14	USD	Manufacturing PMI			53.7
20-Feb-14	USD	CB Leading Index (MoM)		0.20%	0.10%
20-Feb-14	USD	Philadelphia Fed Manufacturing Index		10	9.4
21-Feb-14	EUR	Trade Balance		14.5B	16.0B
21-Feb-14	USD	Existing Home Sales		4.70M	4.87M

Indian Economic Calendar

Date	Curr.	Event	Actual	Forecast	Previous
19-Feb-14	INR	Indian M3 Money Supply			14.50%
21-Feb-14	INR	Indian Bank Loan Growth			14.70%

Disclaimer:

This report is for the personal information of the authorized recipient and does not constitute to be any investment, legal or taxation advice to you. Ashika Stock Broking Ltd., is not soliciting any action based upon it. This report is not for public distribution and has been furnished to you solely for your information and should not be reproduced or redistributed to any other person in any form. The report is based upon information that we consider reliable, but we do not represent that it is accurate or complete, and it should not be relied upon such. Ashika Stock Broking Ltd. or any of its affiliates or employees shall not be in anyway responsible for any loss or damage that may arise to any person from any inadvertent error in the information contained in this report. Ashika Stock Broking Ltd., or any of its affiliates or employees do not provide, at any time, any express or implied warranty of any kind, regarding any matter pertaining to this report, including without limitation the implied warranties of merchantability, fitness for a particular purpose, and non-infringement. The recipients of this report should rely on their own investigations. "Ashika Stock Broking Ltd., and/or its affiliates and /or employees may have interests/positions, financial or otherwise in the securities mentioned in this report."