

Equity	Latest	% Chg	NSE Sect. Indices	Latest	% Chg
Nifty	6089	(0.39)	CNX IT	9120	0.65
Sensex	20548	(0.29)	BANK NIFTY	10389	(2.59)
DowJones	15374	1.36	S&P CNX 500	4640	(0.57)
Nasdaq	3839	1.20	CNX FMCG	17546	(0.07)
Hangseng	23286	0.25	CNX REALTY	171	(1.58)
Shanghai	2203	0.45	CNX AUTO	5086	(0.59)
Nikkei	14630	1.12	CNX ENERGY	7741	(0.26)
Strait Times	3197	0.74	CNX PHARMA	7589	(0.31)
Kospi	2038	0.17	<b>Advances / Declines</b>	<b>BSE</b>	<b>NSE</b>
Taiwan	8381	0.59	Advances	958	364
FTSE	6572	0.34	Declines	1467	811
CAC	4244	(0.29)	Unchanged	138	49
DAX	8846	0.47	Total	2563	1224

Nifty Gainers		
Company	Price(Rs)	Chg(%)
JPASSOCIAT	41.65	4.78
TATASTEEL	310.80	3.05
WIPRO	509.95	1.77
HINDALCO	112.50	1.72
ASIANPAINT	478.40	1.66

Nifty Losers		
Company	Price(Rs)	Chg(%)
INDUSINDBK	406.50	(4.91)
PNB	468.05	(3.93)
IDFC	92.75	(3.84)
BANKBARODA	549.35	(3.80)
HDFCBANK	648.05	(2.91)

Vol. Shockers	Last Day (Lakh)	2 Wk Avg. (Lakh)	Vol. Ch. (Times)
KSK Energy	15.03	1.71	8.80
Bosch	0.16	0.02	7.11
Clariant Chem	1.52	0.22	7.02
Bajaj Elect-\$	3.77	0.59	6.42
Nestle India	0.29	0.05	6.19

Indian Forex	Closing	Chg	% Chg
USD/INR	61.693	0.389	0.64
GBP/INR	98.591	0.604	0.62
EUR/INR	83.674	0.525	0.63
JPY/INR	62.660	0.260	0.42

Precious Metal	Closing	Chg (Rs.)
Gold (Rs/10gm)	29800	(100)
Silver (Rs/1kg)	46356	(1385)

Commodities	Price	% Chg.
Crude (US\$/BBL)	102.2	(0.16)
Brent (US\$/BBL)	110.9	(0.14)
Gold (US/oz)	1283.0	0.88
Silver (US\$/oz)	21.4	0.99
Copper (US\$/MT)	7158.5	(0.65)
Alum (US\$/MT)	1787.0	(1.92)
Zinc(US\$/MT)	1859.0	(1.33)

ADR	Cl. Values	% Chg.
ICICI Bank	33.28	0.46
HDFC Bank	33.38	0.54
Infosys	54.48	(0.28)
Sterlite Inds.	6.22	0.00
Dr. Deddy's Labs	39.40	0.33
Wipro	11.72	0.38
Tata Motors	31.11	0.20

## Market Sensor

U.S. market closed higher after Senate leaders announced a long-awaited compromise to raise the debt ceiling and put an end to the government shutdown. Dow Jones Industrial Average was up 1.36% or 205.82 points at 15373.83. Nasdaq Composite was up 1.20% or 45.42 points at 3839.43. Standard & Poor's 500 was up 1.38% or 23.48 points at 1721.54.

Indian market settled lower on Tuesday on account of profit booking activity further market expecting a rate hike due to higher CPI and WPI numbers. Nifty ended the previous trading session with a decline of 0.39% or 23.65 points at 6089.05. On Friday's trading session, FIIs bought net Rs.1136.23 Cr in cash market and bought net Rs 743.70 in derivative segment. Whereas, DII sold net Rs.1035.34 Cr in cash segment.

**Coming to today's trade Nifty may trade volatile with upside bias, crucial support seen at 6040, while resistance exists at 6150 followed by 6200.**

## Global News

❖ Four Federal Reserve districts reported slower economic growth while the remaining eight said the expansion held steady amid "uncertainty" from the U.S. fiscal deadlock, the central bank said. (Bloomberg)

❖ Climate change could chop an average of 5.3 percent off annual gross domestic product in East Asia by the year 2100 if the four countries in the region don't take measures to tackle it, according to the Asian Development Bank. (Bloomberg)

❖ The Senate voted 81-18 to halt the 16-day government shutdown and raise the U.S. debt limit, moving one step closer to ending the nation's fiscal impasse. (Bloomberg)

❖ Asia's exporters are failing to benefit from a recovery in advanced nations, putting the onus on policy makers to shift reliance to domestic demand as a driver of economic growth. (Bloomberg)

❖ House Speaker John Boehner will allow a vote on an emerging Senate agreement to end the U.S. fiscal impasse and the agreement will pass, said Representative Kevin Brady of Texas, a senior House Republican. (Bloomberg)

## Economic News

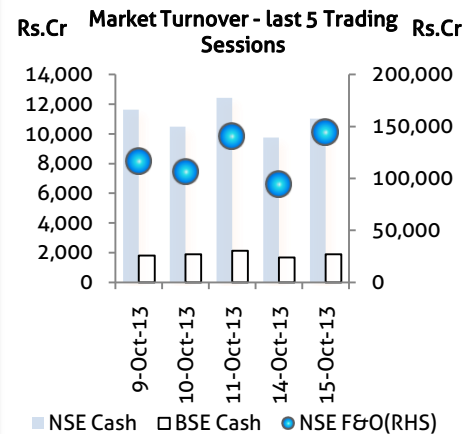
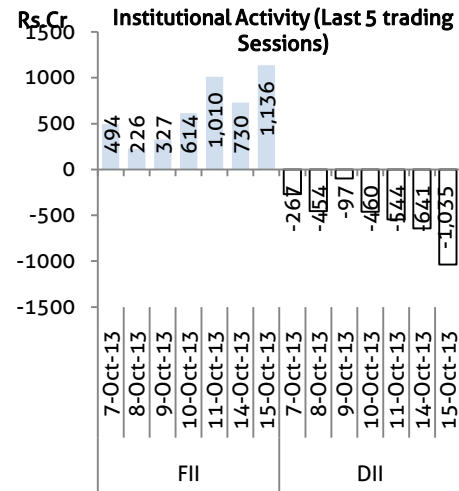
- ❖ The Ministry of Petroleum and Natural gas has formulated a comprehensive plan to augment the supply natural gas in the country. (BS)
- ❖ With inflation expected to remain at an elevated level on account of pass through of rupee depreciation and supply side bottlenecks, the Reserve Bank is likely to maintain status quo in its upcoming monetary policy review, a research report said. (BS)
- ❖ The World Bank sharply lowered its forecast for India's economic growth to 4.7% from 6.1% for the current fiscal year, citing a sharp slowdown in manufacturing and investment as well as negative business confidence. (BS)
- ❖ The Indian economy is expected to grow at around 5% in the current financial year and the slowdown is likely to continue for some time, according to DBS India. (BS)
- ❖ Additional allocation for the Centre's ambitious Food Security Act will be decided during pre-budget meetings to be held before this year-end, Finance Ministry has said. (BS)
- ❖ Connectivity is the buzzword in Southeast Asia and countries in the region are seeking greater air linkages with India to boost tourism and trade and bring the two regions closer together. (BS)
- ❖ India's steel consumption in the first six months of the current fiscal remained flat, showing just 0.8% year-on-year growth due to poor offtake by construction and automobile sectors. (BS)
- ❖ Uttar Pradesh government is preparing a new 'Integrated Industrial Township Policy' to facilitate private sector participation in developing industrial townships in the state, an official said Wednesday. (BS)
- ❖ India's atomic power plants operator Nuclear Power Corporation of India Ltd. (NPCIL) now hopes the first 1,000 MW unit at Kudankulam Nuclear Power Project (KNPP) will start commercial operations next month. (BS)
- ❖ In a reprieve to foreign telecom equipment players, the government has decided to review the preferential market access (PMA) policy that gives favours domestic equipment makers for Government procurements. (BS)
- ❖ Developers seeking to surrender Special Economic Zones will have to give an undertaking that the land will be used in accordance with the recently amended guidelines so as to prevent its misuse. (BS)

## Domestic News

- ❖ In the wake of an FIR filed against top industrialist K M Birla by CBI in the coal scam, Corporate Affairs Minister Sachin Pilot said it must be ensured that such actions are based on 'hard facts' as these incidents dampen business confidence and investor sentiment. (.BS)
- ❖ Mercom Capital Group, llc, a global consulting firm, released its report on funding, mergers and acquisitions (M&A) activity in the Healthcare Information Technology (IT) sector for the third quarter of 2013. (.BS)
- ❖ India Inc rallied behind industrialist Kumar Mangalam Birla, who has been named in an FIR in coal scam case, saying such a step will dent its confidence. (BS)
- ❖ Mid-sized information technology (IT) services firm, Mindtree on Wednesday posted a 77.8 per cent year-on-year increase in its net profit for July-September quarter of FY2014 at Rs. 128.7 crore, while the company's revenues went up by 29.1 per cent to Rs. 769.6 crore, backed by strong growth in key sectors and business lines. (BS)

Global Forex	Closing	Chg	% Chg
EUR-USD	1.3547	0.0013	0.10
GBP-USD	1.5977	0.0026	0.16
USD-JPY	98.64	(0.13)	(0.13)

Bond Markets	Closing	Chg
10-yr bond	8.70	-1.1 bps
Interbank call	8.98	-2.0 bps



## Domestic News (Cont...)

❖ GSM operators have added 4.41 million new subscribers in September, taking the total GSM subscriber base to 678.82 million, according to data published by Cellular operators Association of India (COAI). GSM user base increased marginally by 0.65 per cent as compared to August, it added. (BS)

❖ ITC Hotels has further expanded its bouquet of premium hotels with the opening of the 'WelcomHotel Bella Vista, Panchkula(Haryana) adjoining Chandigarh. The 49-room boutique hotel will be managed by ITC Hotels under the chain's 'WelcomHotel' brand. (BS)

❖ Global venture capital investment into healthcare IT companies increased to \$737 million in the July-September quarter of this year, fro, \$623 million in the previous quarter. (BS)

❖ The Madras High Court has set aside an arbitration award passed by the Arbitral Tribunal to India Cements Ltd in a dispute between the Chennai –based cement manufacturer and Zuari Cement Ltd, a joint venture between Zuari Industires and French firm Ciments Francias. (BS)

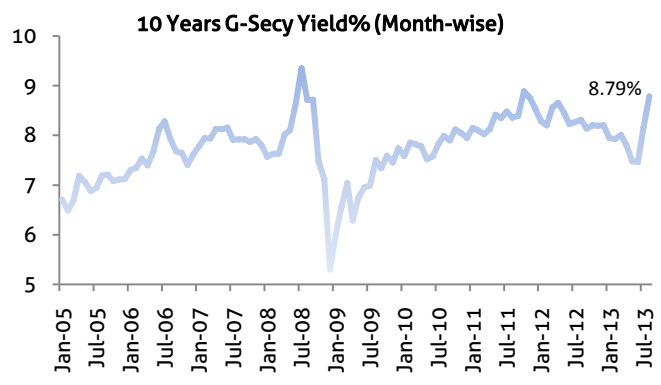
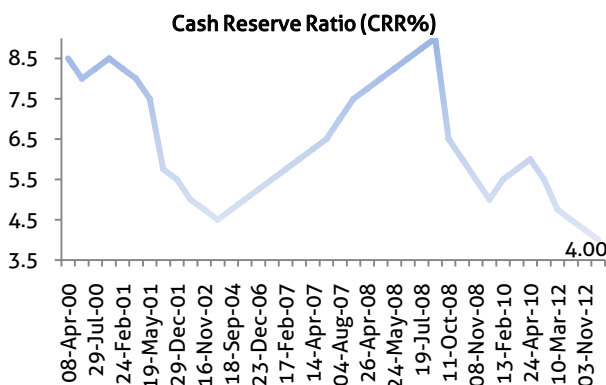
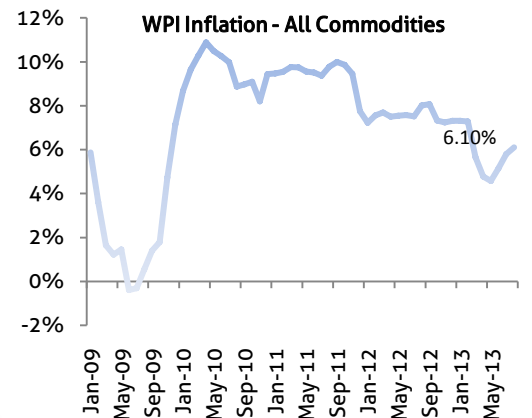
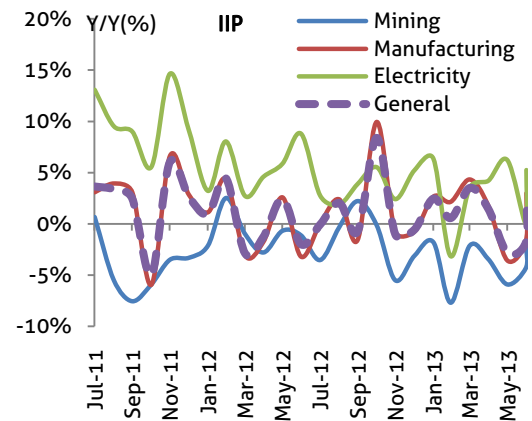
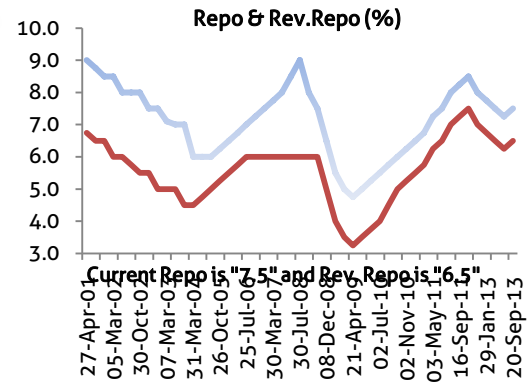
❖ Expanding its smartphone portfolio, Japanese electronics majorPanasonic launched an Andriod-based handset for Rs 7,990. (BS)

❖ Dharampal Satyapal Group (DS Group), on Wednesday, said that it has ventured into premium dairy segment with Ksheer branded ultra-high temperature (UHT) milk. DS Group, which also owns Catch foods, also has plans to expand its dairy portfolio with products in the chilled dairy products in the coming months. (BS)

❖ Heidelberg Cement India reported a Rs 28.35 crore loss for the July-September quarter on higher finance costs and depreciation expenses. (BS)

❖ To strengthen its presence in the intermediate commercial vehicle (ICV) segment Ashok Leyland Limited (ALL) launched "BOSS". The company hopes that the product would help company's sales which has been dropping over many quarters now. (BS)

❖ To strengthen its presence in the intermediate commercial vehicle (ICV) segment Ashok Leyland Limited (ALL) launched "BOSS". The company hopes that the product would help company's sales which has been dropping over many quarters now. (BS)



## Bulk Deal - NSE

Date	Security Name	Client Name	Buy/Sell	Traded Qty.	Price
15-Oct-13	Vmart Retail Ltd	KOTAK MAHINDRA (INTERNATIONAL) LTD	BUY	94064	209.14

## Bulk Deal - BSE

Date	Security Name	Client Name	Buy/Sell	Traded Qty.	Price
15-Oct-13	Oricon Enter-\$	SARVAMANGAL MERCANTILE CO LTD	B	1,000,000	14.03
15-Oct-13	Intec Cap	MODERN CREDIT PRIVATE LIMITED	S	77,994	106.74
15-Oct-13	Sea TV Network	RAJSHAH ENTERPRISE PRIVATE LIMITED	S	265,000	18.91
15-Oct-13	Waterbase	JCT LTD	S	186,000	10.33
15-Oct-13	Shiva Global Agro	YES EQUITIES PRIVATE LIMITED	B	84,029	16

## Corporate Actions

Scrip Code	Scrip Name	Ex-Date	Purpose	Record Date
503637	Dhanleela Inv	10-Oct-13	Stock Split from Rs. 10/- to Rs.2/-	12-Oct-13
531307	S R K Inds	11-Oct-13	Stock Split from Rs.10/- to Rs.5/-	14-Oct-13
500495	Escorts	14-Oct-13	Interim Dividend - Rs.1.20	15-Oct-13
500405	Supreme Petro	14-Oct-13	Dividend - Rs.2.50	-
500469	Federal Bank	17-Oct-13	Stock Split from Rs.10/- to Rs.2/-	18-Oct-13
532521	Four Soft	17-Oct-13	Interim Dividend - Rs.-	18-Oct-13
500209	Infosys	17-Oct-13	Interim Dividend - Rs.-	18-Oct-13
500387	Shree Cement	17-Oct-13	Final Dividend - Rs.12.00	-
530187	Atharv Enter	18-Oct-13	Stock Split from Rs.10/- to Re.1/-	21-Oct-13
532819	Mindtree	21-Oct-13	Interim Dividend - Rs.-	22-Oct-13
532281	HCL Tech	22-Oct-13	Interim Dividend - Rs.-	23-Oct-13
513269	Man Inds-\$	23-Oct-13	Final Dividend - Rs.2.00	-
523716	Ashiana Hous-\$	24-Oct-13	Stock Split from Rs.10/- to Rs.2/-	25-Oct-13
500820	Asian Paints	24-Oct-13	Interim Dividend - Rs.-	26-Oct-13
500092	CRISIL	24-Oct-13	Interim Dividend - Rs.-	25-Oct-13
532343	TVS Motor	30-Oct-13	Interim Dividend - Rs.-	31-Oct-13
500150	Foseco India	31-Oct-13	3rd Interim Dividend - Rs.-	01-Nov-13
524494	IPCA Lab	31-Oct-13	Interim Dividend - Rs.-	01-Nov-13
512105	Shree Nath Comm	31-Oct-13	Consolidation of Shares	01-Nov-13
520056	Sundaram Clayton	31-Oct-13	Interim Dividend - Rs.-	04-Nov-13
505729	Singer India	01-Nov-13	Dividend - Rs.1.50	-

## Global Economic Calendar

Date	Curr.	Event	Actual	Forecast	Previous
7-Oct-13	JPY	Leading Index CI			107.9
8-Oct-13	USD	Consumer Credit		12.00B	10.44B
8-Oct-13	GBP	RICS House Price Balance		45%	40%
8-Oct-13	CNY	Chinese HSBC Services PMI			52.8
8-Oct-13	JPY	Economy Watchers Current Index			51.2
8-Oct-13	USD	Trade Balance		-39.0B	-39.2B
9-Oct-13	GBP	Industrial Production (MoM)		0.40%	
9-Oct-13	GBP	Manufacturing Production (MoM)		0.40%	0.20%
9-Oct-13	GBP	Trade Balance		-9.00B	-9.85B
9-Oct-13	USD	Wholesale Inventories (MoM)		0.30%	0.10%
10-Oct-13	GBP	BoE QE Total		375B	375B
10-Oct-13	GBP	Interest Rate Decision		0.50%	0.50%
10-Oct-13	USD	Import Price Index (MoM)		0.30%	
10-Oct-13	USD	Initial Jobless Claims		310K	308K
11-Oct-13	JPY	CGPI (YoY)		2.30%	2.40%
11-Oct-13	USD	Nonfarm Payrolls		180K	169K
11-Oct-13	USD	PPI (MoM)		0.20%	0.30%
11-Oct-13	USD	Retail Sales (MoM)		0.30%	0.20%
11-Oct-13	USD	Unemployment Rate		7.30%	7.30%
11-Oct-13	USD	Michigan Consumer Sentiment		76	77.5
11-Oct-13	USD	Business Inventories (MoM)		0.30%	0.40%
11-Oct-13	USD	Construction Spending (MoM)		0.40%	0.60%
11-Oct-13	USD	Factory Orders (MoM)		0.30%	-2.40%

## Indian Economic Calendar

Date	Curr.	Event	Actual	Forecast	Previous
10-Oct-13	INR	Exports YoY			13.00%
11-Oct-13	INR	Indian Industrial Production (YoY)			2.60%
11-Oct-13	INR	Indian Manufacturing Output (MoM)			3.00%

### Disclaimer:

This report is for the personal information of the authorized recipient and does not construe to be any investment, legal or taxation advice to you. Ashika Stock Broking Ltd., is not soliciting any action based upon it. This report is not for public distribution and has been furnished to you solely for your information and should not be reproduced or redistributed to any other person in any form. The report is based upon information that we consider reliable, but we do not represent that it is accurate or complete, and it should not be relied upon such. Ashika Stock Broking Ltd. or any of its affiliates or employees shall not be in anyway responsible for any loss or damage that may arise to any person from any inadvertent error in the information contained in this report. Ashika Stock Broking Ltd., or any of its affiliates or employees do not provide, at any time, any express or implied warranty of any kind, regarding any matter pertaining to this report, including without limitation the implied warranties of merchantability, fitness for a particular purpose, and non-infringement. The recipients of this report should rely on their own investigations. "Ashika Stock Broking Ltd., and/or its affiliates and /or employees may have interests/positions, financial or otherwise in the securities mentioned in this report."