

| Equity       | Latest | % Chg  | NSE Sect. Indices          | Latest     | % Chg      |
|--------------|--------|--------|----------------------------|------------|------------|
| Nifty        | 6155   | (0.22) | CNX IT                     | 9110       | 1.70       |
| Sensex       | 20660  | (0.27) | BANK NIFTY                 | 11373      | 0.05       |
| DowJones     | 15885  | 0.82   | S&P CNX 500                | 4756       | 0.00       |
| Nasdaq       | 4030   | 0.71   | CNX FMCG                   | 16502      | (0.73)     |
| Hangseng     | 23192  | 0.33   | CNX REALTY                 | 172        | (0.14)     |
| Shanghai     | 2154   | (0.34) | CNX AUTO                   | 5151       | (0.57)     |
| Nikkei       | 15285  | 0.87   | CNX ENERGY                 | 7656       | (1.15)     |
| Strait Times | 3074   | 0.66   | CNX PHARMA                 | 7314       | 0.51       |
| Kospi        | 1974   | 0.66   | <b>Advances / Declines</b> | <b>BSE</b> | <b>NSE</b> |
| Taiwan       | 8380   | 0.80   | Advances                   | 1105       | 475        |
| FTSE         | 6522   | 1.28   | Declines                   | 1326       | 674        |
| CAC          | 4120   | 1.48   | Unchanged                  | 181        | 61         |
| DAX          | 9164   | 1.74   | Total                      | 2612       | 1210       |

| Nifty Gainers |           |        |
|---------------|-----------|--------|
| Company       | Price(Rs) | Chg(%) |
| SSLT          | 199.75    | 4.09   |
| INFY          | 3451.00   | 2.29   |
| POWERGRID     | 99.20     | 1.74   |
| TATAPOWER     | 88.60     | 1.61   |
| COALINDIA     | 287.00    | 1.38   |

| Nifty Losers |           |        |
|--------------|-----------|--------|
| Company      | Price(Rs) | Chg(%) |
| M&M          | 923.05    | (2.89) |
| JINDALSTEL   | 252.40    | (2.85) |
| SUNPHARMA    | 557.00    | (2.48) |
| RELIANCE     | 845.00    | (2.28) |
| BHARTIARTL   | 313.70    | (2.23) |

| Vol. Shockers     | Last Day (Lakh) | 2 Wk Avg. (Lakh) | Vol. Ch. (Times) |
|-------------------|-----------------|------------------|------------------|
| FLORENCE-\$       | 5.36            | 0.01             | 818              |
| Glaxosmithkl Phar | 0.84            | 0.06             | 14               |
| Onelife Capital   | 3.08            | 0.28             | 11               |
| Aurobindo Phar    | 22.76           | 2.19             | 10               |
| Natco Pharma      | 1.52            | 0.16             | 10               |

| Indian Forex | Closing | Chg     | % Chg  |
|--------------|---------|---------|--------|
| USD/INR      | 62.102  | (0.024) | (0.04) |
| GBP/INR      | 101.270 | (0.263) | (0.26) |
| EUR/INR      | 85.428  | 0.015   | 0.02   |
| JPY/INR      | 60.400  | 0.500   | 0.83   |

| Precious Metal  | Closing | Chg (Rs.) |
|-----------------|---------|-----------|
| Gold (Rs/10gm)  | 29800   | (225)     |
| Silver (Rs/1kg) | 44232   | (253)     |

| Commodities      | Price  | % Chg. |
|------------------|--------|--------|
| Crude (US\$/BBL) | 97.4   | 0.79   |
| Brent (US\$/BBL) | 109.2  | 0.36   |
| Gold (US/oz)     | 1240.4 | 0.47   |
| Silver (US\$/oz) | 19.9   | 1.63   |
| Copper (US\$/MT) | 7325.5 | 1.48   |
| Alum (US\$/MT)   | 1745.5 | (0.29) |
| Zinc(US\$/MT)    | 1992.5 | 1.71   |

| ADR              | Cl. Values | % Chg. |
|------------------|------------|--------|
| ICICI Bank       | 36.81      | 0.98   |
| HDFC Bank        | 34.61      | 0.51   |
| Infosys          | 55.66      | 1.29   |
| Sterlite Inds.   | 6.22       | 0.00   |
| Dr. Deddy's Labs | 39.45      | 0.95   |
| Wipro            | 11.86      | 0.16   |
| Tata Motors      | 30.40      | 0.25   |

## Market Sensor

US market surged on Monday, with the Dow and the S&P 500 bouncing back from two consecutive weekly declines, as Wall Street tried to measure what's ahead for monetary stimulus one day ahead of a two-day Federal Reserve meeting. Dow Jones Industrial Average was down 0.82% or 129.21 points at 15884.57. Nasdaq Composite was up 0.71% or 28.54 points at 4029.52. Standard & Poor's 500 was up 0.63% or 11.22 points at 1786.54.

Indian market headed lower for the fifth consecutive day in a row as spike in inflation raised concern of RBI might go for a rate hike in its next policy meet this week. Nifty ended the previous trading session with a decline of 0.22% or 13.70 points at 6154.70. On Monday's trading session, FII's bought net Rs.159.55 Cr in cash market and sold net Rs.979.72 in derivative segment. Whereas, DII sold net Rs.129.5 Cr in cash segment.

**Coming to today's trade day Nifty to remain volatile with positive bias. Crucial intraday support in Nifty exist at 6130 followed by 6090 while resistance is seen at 6240 followed by 6280.**

## Global News

❖ China, the largest foreign creditor to the U.S., increased its ownership of Treasuries in October to almost the record level reached in July 2011 after the Federal Reserve unexpectedly opted not to slow bond buying. (Bloomberg)

❖ American assembly lines churned out more cars, electronics and furniture in November, showing manufacturing will help the world's largest economy strengthen in 2014. (Bloomberg)

❖ Angela Merkel begins her third term as German chancellor buttressed by the overwhelming support of her Social Democratic coalition partner and with her veteran finance minister, Wolfgang Schaeuble, at her side. (Bloomberg)

❖ Euro-area factory output grew at a faster pace than economists forecast in December, led by Germany, as the currency bloc continued its gradual recovery from a record-long recession. (Bloomberg)

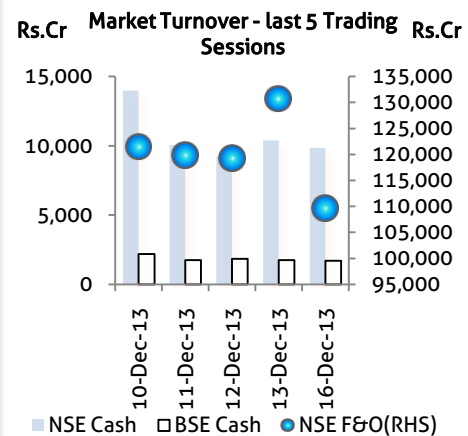
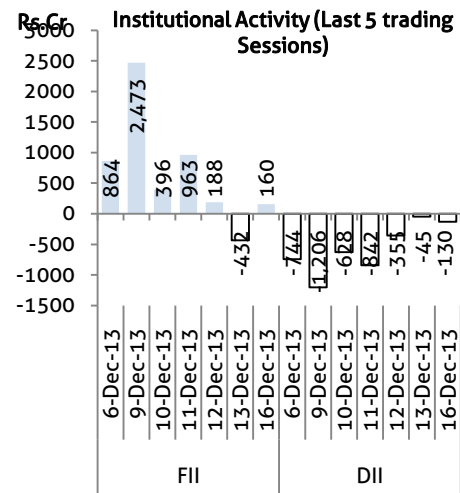
❖ European Central Bank President Mario Draghi criticized plans by euro-area governments on how to deal with failing banks, saying current proposals might be too complicated to work properly. (Bloomberg)

## Economic News

- ❖ IT major TCS said 2014-15 will be better than the ongoing fiscal on account of uptick in client spending in the US and Europe and growth in demand for technologies like cloud, mobility and Big Data. (BS)
- ❖ Losses on diesel sales have climbed to Rs 10.48 per litre after international oil rates inched up, the Oil Ministry said. (BS)
- ❖ The EPFO is likely to decide soon the rate of interest on PF deposits for 2013-14, which is expected to be over 8.5%. (BS)
- ❖ Headline inflation, which jumped to a 14-month high in November at 7.52%, has likely bottomed out and may decline from the next month because of seasonal factors reducing the supply-side pressures, say economists. (BS)
- ❖ Months ahead of the Lok Sabha elections the UP Government has announced a series of measures to ensure that National Rural Employment Guarantee Scheme (NREGA) would woo voters this time as it did in the previous elections. (BS)
- ❖ Impacted by economic slowdown, India's steel consumption grew by merely 0.4% to 48.291 million tonne during the April-November period of the current fiscal. (BS)
- ❖ The Finance Ministry has strongly pitched for putting a cap or limit to which natural gas rates can be increased following a new pricing formula that will come into effect from April 1. (BS)
- ❖ The GSM subscriber base in the country rose marginally in November to reach 68.80 crore, with 48.67 lakh new users added during the month, industry body COAI said. (BS)
- ❖ Headline inflation surged past analysts' expectations to a 14-month high of 7.52% in November, government data showed on Monday, after food prices rose at the fastest clip since June 2010. (BS)

| Global Forex | Closing | Chg      | % Chg  |
|--------------|---------|----------|--------|
| EUR-USD      | 1.3760  | (0.0001) | (0.01) |
| GBP-USD      | 1.6313  | 0.0016   | 0.10   |
| USD-JPY      | 103.05  | 0.03     | 0.03   |

| Bond Markets   | Closing | Chg      |
|----------------|---------|----------|
| 10-yr bond     | 9.13    | -3.9 bps |
| Interbank call | 8.15    | 24.0 bps |



## Domestic News

- ❖ The Department of Telecommunications (DoT) is likely to file a fresh petition before the Telecom Disputes Settlement and Appellate Tribunal (TDSAT) for recovery of outstanding licence fee dues amounting to Rs 1001.16 crore from UAE-based telecom company Etisalat whose operating permits were quashed by the Supreme Court order that cancelled 122 telecom licences for alleged irregularities in allocation, according to a recent communication. (BS)
- ❖ Coal India hiked prices of non-coking coal produced by its subsidiary Western Coalfields by 10 per cent, which would earn Rs 140 crore additional revenue this year for the parent company. (BS)
- ❖ India's largest information technologies (IT) services company, Tata Consultancy Services is likely to enter into a four-year deal with Danish insurer Tryg, as the latter has terminated its IT operating agreement with Computer Sciences Corporation (CSC) effective August 1, 2014. (BS)
- ❖ Indian companies raised \$1.93 billion from overseas markets in October through external commercial borrowings and foreign currency convertible bonds, according to RBI data. (BS)
- ❖ In yet another blow to UB Holdings Ltd, a division bench of the Karnataka High Court has upheld the decision of a single judge bench to admit BNP Paribas' winding-up petition against the principal holding company of Vijay Mallya-led UB Group. (BS)

## Domestic News (Cont...)

❖ State-owned India Infrastructure Finance Company Ltd (IIFCL) said it would disburse Rs 5,500 crore loans to various infrastructure projects in four months. (BS)

❖ State-owned Housing and Urban Development Corporation (HUDCO) said it has raised Rs 2,010 crore so far from an issue of tax-free bonds that started early this month. (BS)

❖ Private insurer Reliance Life Insurance, which hired 2,000 for its proprietary channels in the past one year, said it plans to strengthen this category by 10-20% in the next financial year 2014-15. (BS)

❖ Clariant Chemicals (India) said it will acquire the masterbatch business of Gujarat-based PlstichemixIndustries for Rs 135 crore and the deal is expected to be completed latest by March. (BS)

❖ Technology services company Aspire Systems has completed the acquisition of Hyderabad-based software services firm Versant Technology that specialises in Oracle retail solutions for an "undisclosed amount". (BS)

❖ Mumbai-based green energy player, Swan Energy Ltd has announced that the company has received environment clearance for its LNG terminal near Pipavav in Gujarat. (BS)

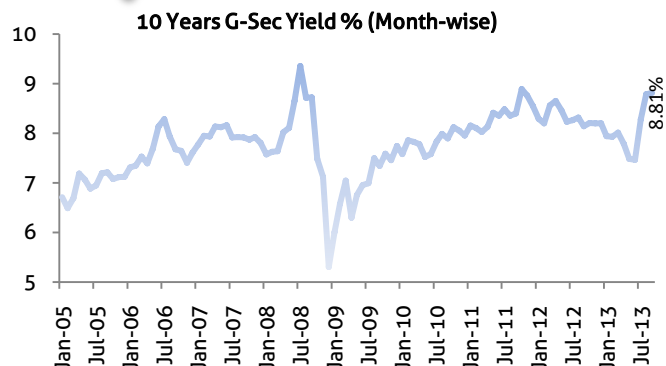
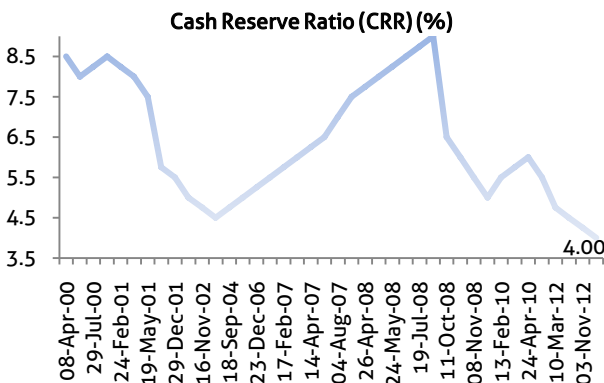
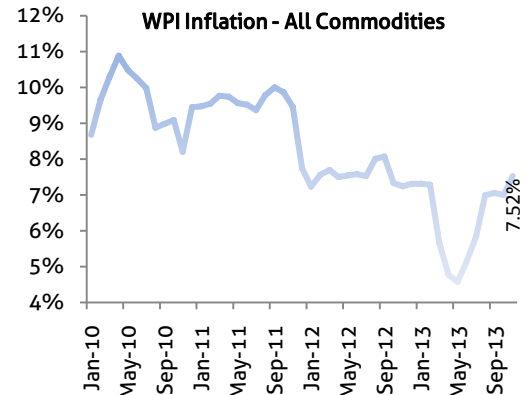
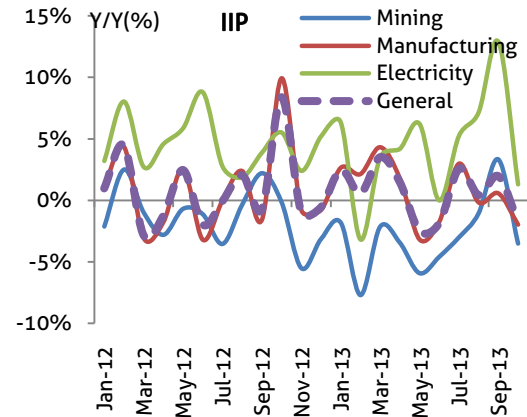
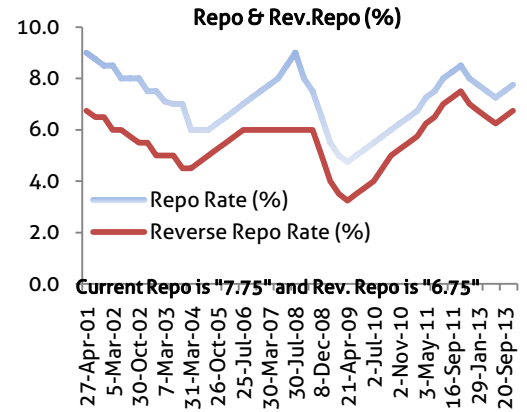
❖ Mid-size information technology (IT) services companyMindtree, which had embarked on an organisational overhaul about two years ago, has completed around 70% of therestructuring process it had laid out. (BS)

❖ Reliance Industries is planning to shut a crude distillation unit (CDU) at its 660,000 barrels per day (bpd) Jamnagar refinery around early February for maintenance, industry sources said on Monday. (BS)

❖ NSL Power, which plans to invest \$45 million to set up new wind farms in Maharashtra, is planning to raise around \$15.75 million from the International Finance Corporation. (BS)

❖ In what may be considered as a move to stave offcompetition from AirAsia India, Kalanithi Maran-promoted low-cost airline SpiceJet made its first-mover advantage by entering into an interlining agreement with Singapore's largest budget airline Tigerair. (BS)

❖ GlaxoSmithKline Pharmaceuticals has initiated a voluntary open offer to increase its stake in its Indian pharmaceutical unit - GlaxoSmithKline Pharmaceuticals Limited - from 50.7% to up to 75% at a price of Rs 3,100 per share. (BS)





## Global Economic Calendar

| Date      | Curr. | Event                                | Actual | Forecast | Previous |
|-----------|-------|--------------------------------------|--------|----------|----------|
| 16-Dec-13 | JPY   | Tankan Large Manufacturers Index     |        | 15       | 12       |
| 16-Dec-13 | EUR   | Manufacturing PMI                    |        | 51.9     | 51.6     |
| 16-Dec-13 | EUR   | Services PMI                         |        | 51.4     | 51.2     |
| 16-Dec-13 | USD   | Nonfarm Productivity (QoQ)           |        | 2.20%    | 1.90%    |
| 16-Dec-13 | USD   | NY Empire State Manufacturing Index  |        | 4.5      | -2.21    |
| 16-Dec-13 | USD   | TIC Net Long-Term Transactions       |        |          | 25.5B    |
| 16-Dec-13 | USD   | Industrial Production (MoM)          |        | 0.40%    | -0.10%   |
| 17-Dec-13 | GBP   | CPI (YoY)                            |        | 2.30%    | 2.20%    |
| 17-Dec-13 | GBP   | PPI Output (YoY)                     |        | 0.90%    | 0.80%    |
| 17-Dec-13 | GBP   | RPI (YoY)                            |        | 2.80%    | 2.60%    |
| 17-Dec-13 | EUR   | CPI (YoY)                            |        | 0.90%    | 0.90%    |
| 17-Dec-13 | USD   | CPI (MoM)                            |        | 0.10%    | -0.10%   |
| 17-Dec-13 | USD   | Current Account                      |        | -100.9B  | -98.9B   |
| 18-Dec-13 | JPY   | Trade Balance                        |        | -1,320B  | -1,091B  |
| 18-Dec-13 | GBP   | Unemployment Rate                    |        | 7.60%    | 7.60%    |
| 18-Dec-13 | USD   | MBA 30-Year Mortgage Rate            |        |          | 4.61%    |
| 18-Dec-13 | USD   | Building Permits                     |        | 1.000M   | 1.034M   |
| 18-Dec-13 | USD   | Housing Starts                       |        | 0.915M   |          |
| 19-Dec-13 | EUR   | Current Account                      |        |          | 13.7B    |
| 19-Dec-13 | GBP   | Retail Sales (MoM)                   |        | 0.20%    | -0.70%   |
| 19-Dec-13 | USD   | CB Leading Index (MoM)               |        | 0.60%    | 0.20%    |
| 19-Dec-13 | USD   | Existing Home Sales (MoM)            |        | 1.60%    | -3.20%   |
| 19-Dec-13 | USD   | Initial Jobless Claims               |        |          |          |
| 19-Dec-13 | USD   | Philadelphia Fed Manufacturing Index |        | 10       | 6.5      |
| 19-Dec-13 | USD   | FOMC Rate Decision                   |        |          |          |
| 20-Dec-13 | GBP   | Current Account                      |        | -13.7B   | -13.0B   |
| 20-Dec-13 | GBP   | GDP (QoQ)                            |        | 0.80%    | 0.80%    |
| 20-Dec-13 | USD   | GDP (QoQ)                            |        | 3.60%    | 3.60%    |
| 20-Dec-13 | USD   | Real Consumer Spending               |        |          | 1.40%    |
| 20-Dec-13 | EUR   | Consumer Confidence                  |        | -15      | -15.4    |

## Indian Economic Calendar

| Date      | Curr. | Event                         | Actual | Forecast | Previous |
|-----------|-------|-------------------------------|--------|----------|----------|
| 16-Dec-13 | INR   | Indian WPI (YoY)              |        | 7.00%    | 7.00%    |
| 18-Dec-13 | INR   | Indian Interest Rate Decision |        |          | 7.75%    |

### Disclaimer:

This report is for the personal information of the authorized recipient and does not constitute to be any investment, legal or taxation advice to you. Ashika Stock Broking Ltd., is not soliciting any action based upon it. This report is not for public distribution and has been furnished to you solely for your information and should not be reproduced or redistributed to any other person in any form. The report is based upon information that we consider reliable, but we do not represent that it is accurate or complete, and it should not be relied upon such. Ashika Stock Broking Ltd. or any of its affiliates or employees shall not be in anyway responsible for any loss or damage that may arise to any person from any inadvertent error in the information contained in this report. Ashika Stock Broking Ltd., or any of its affiliates or employees do not provide, at any time, any express or implied warranty of any kind, regarding any matter pertaining to this report, including without limitation the implied warranties of merchantability, fitness for a particular purpose, and non-infringement. The recipients of this report should rely on their own investigations. "Ashika Stock Broking Ltd., and/or its affiliates and /or employees may have interests/positions, financial or otherwise in the securities mentioned in this report."