

Equity	Latest	% Chg	NSE Sect. Indices	Latest	% Chg
Nifty	6153	0.42	CNX IT	10033	1.50
Sensex	20723	0.43	BANK NIFTY	10610	0.33
DowJones	16041	(0.56)	S&P CNX 500	4753	0.45
Nasdaq	4238	(0.82)	CNX FMCG	16501	(0.03)
Hangseng	22351	(1.38)	CNX REALTY	155	0.49
Shanghai	2148	0.25	CNX AUTO	5275	0.00
Nikkei	14530	(1.60)	CNX ENERGY	7492	(0.08)
Strait Times	3087	(0.04)	CNX PHARMA	7888	1.16
Kospi	1929	(0.74)	Advances / Declines	BSE	NSE
Taiwan	8539	(0.44)	Advances	1426	768
FTSE	6797	0.00	Declines	1252	642
CAC	4341	0.24	Unchanged	151	101
DAX	9660	0.00	Total	2829	1511

Nifty Gainers		
Company	Price(Rs)	Chg(%)
RANBAXY	360.80	2.79
SUNPHARMA	623.00	2.17
TCS	2213.00	2.17
LUPIN	942.50	2.14
INFY	3760.00	2.12

Nifty Losers		
Company	Price(Rs)	Chg(%)
TATAPOWER	77.20	(2.83)
JINDALSTEL	245.40	(2.79)
HEROMOTOCO	1942.00	(1.89)
SSLT	186.35	(1.53)
TATASTEEL	374.00	(1.49)

Vol. Shockers	Last Day (Lakh)	2 Wk Avg. (Lakh)	Vol. Ch. (Times)
Magma Fin	23.70	0.05	443
Emami Paper	27.31	0.07	415
STAR FERRO	66.73	1.50	45
Century Ply-\$	50.40	1.43	35
ABG Shipyard	5.01	0.15	32

Indian Forex	Closing	Chg	% Chg
USD/INR	62.122	0.172	0.28
GBP/INR	103.930	(0.089)	(0.09)
EUR/INR	85.168	0.220	0.26
JPY/INR	60.510	(0.460)	(0.75)

Precious Metal	Closing	Chg (Rs.)
Gold (Rs/10gm)	30400	(250)
Silver (Rs/1kg)	47400	313

Commodities	Price	% Chg.
Crude (US\$/BBL)	103.2	0.37
Brent (US\$/BBL)	110.1	(0.25)
Gold (US/oz)	1310.0	(0.60)
Silver (US\$/oz)	21.5	(0.92)
Copper (US\$/MT)	7220.0	0.21
Alum (US\$/MT)	1726.5	1.95
Zinc(US\$/MT)	2075.0	0.22

ADR	Cl. Values	% Chg.
ICICI Bank	33.80	(0.60)
HDFC Bank	33.37	(0.25)
Infosys	59.92	0.05
Sterlite Inds.	6.22	0.00
Dr. Deddy's Labs	42.68	(0.35)
Wipro	13.02	0.00
Tata Motors	31.82	(0.03)

Market Sensor

US market finished near session lows in volatile trading Wednesday, with the Nasdaq snapping an eight-day winning streak, as investors digested minutes from the Fed's latest policy meeting. Dow Jones Industrial Average was up 1.06% or 165.55 points at 15794.08. Nasdaq Composite was up 1.69% or 68.74 points at 4125.86. Standard & Poor's 500 was up 1.33% or 23.59 points at 1797.02.

Indian equity market continued to head higher for the third consecutive day in a row led by IT and technology stocks. Nifty ended the previous trading session with a gain of 0.42% or 25.65 points at 6152.75. On Wednesday's trading session, Fills bought net Rs.468.47 Cr in cash market and bought net Rs.467.50 in derivative segment. Whereas, DII sold net Rs.338.74 Cr in cash segment.

Coming to today's trade Nifty to remain volatile with crucial intraday support in Nifty exists at 6100 followed by 6170 while resistance is seen at 6180 followed by 6220.

Global News

❖ Federal Reserve policy makers backed away from their year-old commitment to consider raising interest rates when unemployment falls below 6.5 percent. (Bloomberg)

❖ Japan's trade deficit widened to a record in January as surging import costs weigh on Prime Minister Shinzo Abe's campaign to drive a sustained recovery. (Bloomberg)

❖ A Chinese manufacturing index fell to the lowest level in seven months, adding to signs of a factory slowdown that will limit growth in the world's second-largest economy. (Bloomberg)

❖ Housing starts in the U.S. slumped in January by the most in almost three years as unusually harsh winter weather added to the industry's burdens. (Bloomberg)

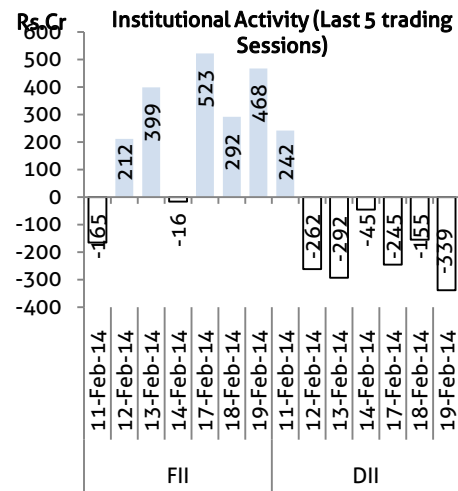
❖ Risks of prolonged market turmoil in emerging markets and of deflation in the euro area are threatening the world's improved economic prospects, according to the International Monetary Fund. (Bloomberg)

Economic News

- ❖ The subsidy for raw sugar export may come down upon review as cabinet committee has made Rs 3,333 per tonne as the ceiling for giving subsidy which will be valid only upto March 31, 2014 as per the cabinet proposal. (BS)
- ❖ In a significant development, Oil Minister M Veerappa Moily has ordered CNG retailers to provide break-up of fuel price to consumers to ensure that they passed on the benefit of cheaper domestic gas to users. (BS)
- ❖ The government appears to be willing to restart conciliation talks with UK-based Vodafone if the telecom firm makes up its mind to settle the Rs 20,000 crore tax dispute. (BS)
- ❖ The Prime Minister's Office has set up an Inter Ministerial Group (IMG) headed by the Industry Secretary to simplify the language of the policy on foreign direct investment. (BS)
- ❖ Government has issued 57.62 crore Aadhaar cards till January 31, and there is no denial of enrolment to people who don't have document-based proof of identity, Parliament was informed. (BS)
- ❖ The Delhi High Court directed the city government not to implement the 50% subsidy announced by it to people who did not pay their power bills from October 2012 to December 2013. (BS)
- ❖ The much-awaited guidelines for mergers and acquisitions of telecom companies are expected to be in place within 10 days. (BS)
- ❖ Mizoram will soon hike VAT on cigarettes in the state, official sources said. (BS)

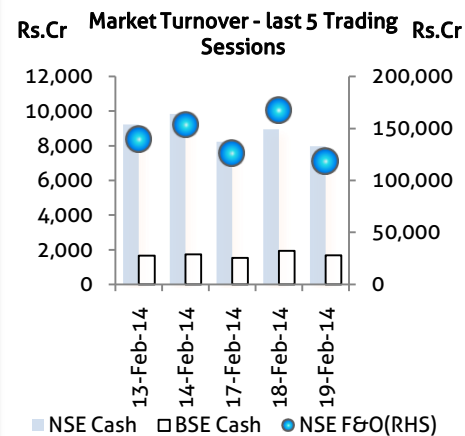
Global Forex	Closing	Chg	% Chg
EUR-USD	1.3745	0.0012	0.09
GBP-USD	1.6665	(0.0015)	(0.09)
USD-JPY	101.95	(0.36)	(0.36)

Bond Markets	Closing	Chg
10-yr bond	9.06	-2.0 bps
Interbank call	8.30	-4.0 bps



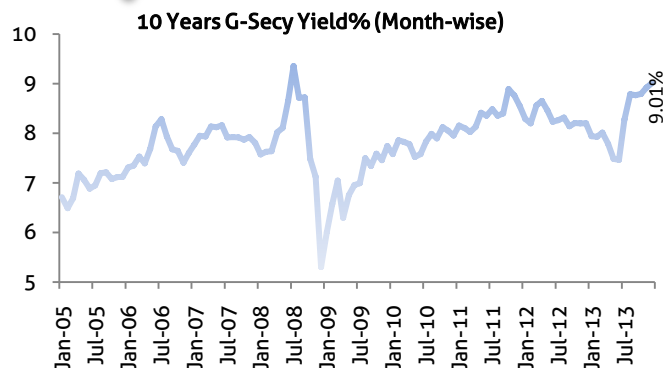
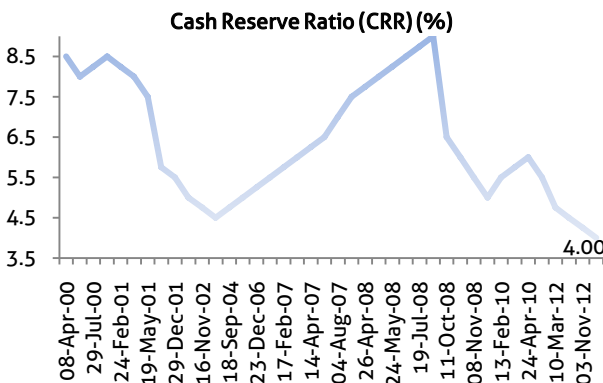
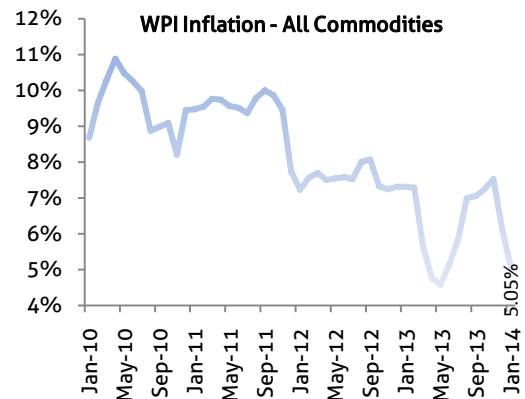
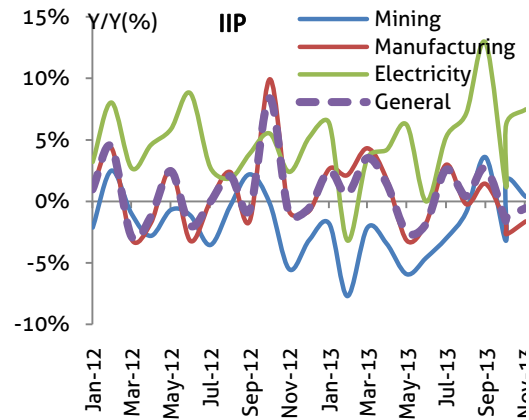
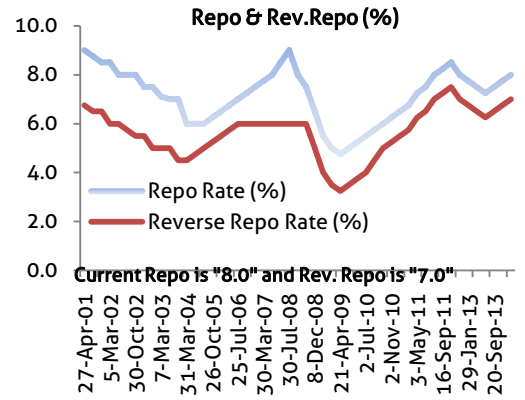
Domestic News

- ❖ Public issue of corporate bonds, including tax-free bonds, met with larger success in the current fiscal compared with previous fiscal. The key reason being the coupon rates was much attractive for the investors in a slowing inflation scenario. (BS)
- ❖ After Maruti Suzuki, Tata Motors and Nissan announced price cuts following reduction in excise duty in the interim budget, German car maker Volkswagen also announced a price reduction on the Polo, Vento and Jetta of up to Rs 51000. (BS)
- ❖ Bharti Airtel, India's biggest mobile service company has become the first in the country to cross 200 million subscribers. (BS)
- ❖ Carmaker Ford India aims to have around 200 consumer touch points, out of the total 500 planned by the middle of the decade, in smaller towns as it looks to tap growth potential in these areas going ahead. (BS)
- ❖ With its greenfield nutraceuticals plant all set to become operational later this year in Gujarat, Abbott India says it is bullish on the Indian market which is a priority market for the company globally. Having launched 40 new products in the last 24 months, the company nonetheless says it is closely monitoring the developments related to clinical trials. (BS)
- ❖ Elder Pharmaceuticals has appointed consulting firm Deloitte for restructuring the company and its brands including 'Eldervit' following the sale of its formulation business to Torrent Pharmaceuticals for Rs 2,004 crore. (BS)
- ❖ State Bank of India, the country's largest lender, may go slow on recruitments during the next 2-3 years, a top bank official said here. (BS)



Domestic News (Cont...)

- ❖ N R N Murthy, chairman Infosys took a tough stand on non-performers and said non-performance will not be tolerated. Murthy was addressing analyst at the Bank of America Meryll Lynch investor conference held in Mumbai. (BS)
- ❖ Nissan Motor India has slashed the prices of its vehicles by up to 6% from February 18 following a cut in the excise duty announced in the interim Budget. (BS)
- ❖ Companies and limited liability partnership firms floated by private entities should not use the word 'National' in their names, the government has said. (BS)
- ❖ Capital market watchdog Sebi wants listed companies to voluntarily consider separating the posts of chairman and managing director as a good governance practice because making it mandatory may not be feasible yet. (BS)
- ❖ Goldman Sachs and a unit of Mitsui & Co Ltd have led a Rs 315 crore investment in consumer goods firm Global Beverages & Foods Pvt Ltd, the investment banks said in a joint statement on Wednesday. (BS)
- ❖ In a major crackdown against listed firms not complying with regulatory disclosure norms, NSE and BSE have imposed fines or suspended trading in over 1,100 cases of non-compliance, involving nearly 600 companies. (BS)
- ❖ The New York Attorney General and the US units of Ranbaxy Laboratories and Teva Pharmaceutical Industries have settled claims that an agreement between the two drugmakers unlawfully restricted competition. (BS)
- ❖ SIDBI-backed Bandhan Financial Services Private Limited, India's largest microfinance provider in terms of loan disbursements, is planning to raise around Rs 160 crore (around \$26 million) from International Finance Corporation (IFC). (BS)
- ❖ Days after an FIR was filed against Reliance Industries and its chairman Mukesh Ambani in gas pricing case, the company's Executive Director P M S Prasad today met Delhi Lieutenant Governor Najeeb Jung. (BS)
- ❖ ICICI Bank MD and CEO Chanda Kochhar today said "growth and vibrancy" need to be brought back into the economy to make India a financial services hub. (BS)



Bulk Deal - NSE

Date	Security Name	Client Name	Buy/Sell	Traded Qty.	Price
19-Feb-14	Southern Ispat Ltd	SAMEER SHEKHAR KANOONGO	BUY	201650	2.25
19-Feb-14	Greaves Limited	AMANSA HOLDINGS PRIVATE LIMITED	SELL	1332037	59.58
19-Feb-14	Southern Ispat Ltd	SAMEER SHEKHAR KANOONGO	SELL	1500647	2.25

Bulk Deal - BSE

Date	Security Name	Client Name	Buy/Sell	Traded Qty.	Price
19-Feb-14	Magma Fin	LAVENDER INVESTMENTS LIMITED	B	2,340,000	66.5
19-Feb-14	Dhanuka Agri	ZOOM LEASING & FINANCE CO LIMITED	B	750,000	187
19-Feb-14	STAR FERRO	VISHNU KHEMANI	S	6,666,666	17.45
19-Feb-14	Century Ply-\$	VISHNU KHEMANI	B	5,000,000	23.2
19-Feb-14	Magma Fin	MACQUARIE BANK LIMITED	S	1,493,481	66.5

Corporate Actions

Scrip Code	Scrip Name	Ex-Date	Purpose	Record Date
533229	Bajaj Corp	20-Feb-14	Interim Dividend - Rs.6.50	21-Feb-14
500039	Banco Products-\$	20-Feb-14	Interim Dividend - Rs.1.70	21-Feb-14
526881	Financial Tech	20-Feb-14	3rd Interim Dividend - Rs.2.00	21-Feb-14
532129	Hexaware Tech	20-Feb-14	Interim Dividend - Rs.7.50	21-Feb-14
532955	REC	20-Feb-14	Interim Dividend - Rs.7.75	21-Feb-14
532908	Sharon Bio-\$	20-Feb-14	BONUS 1:1	21-Feb-14
532908	Sharon Bio-\$	20-Feb-14	Stock Split from Rs.10/- to Rs.2/-	21-Feb-14
533289	Kesar Terminals	21-Feb-14	Interim Dividend - Rs.1.50	24-Feb-14
512381	Nivedita Merc	21-Feb-14	Interim Dividend - Rs.0.50	24-Feb-14
523642	PI Inds	21-Feb-14	Interim Dividend - Rs.0.50	24-Feb-14
503162	Reliance Chem-\$	21-Feb-14	Interim Dividend - Rs.0.75	24-Feb-14
506414	DIL	24-Feb-14	Interim Dividend - Rs.7.50	25-Feb-14
532859	Hinduja Glob	24-Feb-14	2nd Interim Dividend - Rs.5.00	25-Feb-14
524816	Natco Pharma	24-Feb-14	Interim Dividend - Rs.5.00	25-Feb-14
531717	Vidhi Dyestuffs-\$	24-Feb-14	Interim Dividend - Rs.0.20	25-Feb-14
522073	Hitech Gears	25-Feb-14	Interim Dividend - Rs.1.00	26-Feb-14
517380	Igarashi Motors	25-Feb-14	Interim Dividend - Rs.1.00	26-Feb-14
533154	INFINITE	25-Feb-14	Interim Dividend - Rs.2.00	27-Feb-14
532440	MPS	25-Feb-14	3rd Interim Dividend - Rs.7.00	26-Feb-14
532468	KAMAHOLDING-\$	26-Feb-14	2nd Interim Dividend - Rs.-	28-Feb-14
532899	Kaveri Seed	26-Feb-14	Interim Dividend - Rs.2.40	28-Feb-14
523539	Precision Wires	26-Feb-14	2nd Interim Dividend - Rs.4.00	28-Feb-14

Global Economic Calendar

Date	Curr.	Event	Actual	Forecast	Previous
17-Feb-14	JPY	GDP (YoY)		2.80%	1.10%
17-Feb-14	JPY	Industrial Production (MoM)			1.10%
18-Feb-14	EUR	Current Account n.s.a.		20.0B	27.4B
18-Feb-14	GBP	CPI (YoY)		2.00%	2.00%
18-Feb-14	GBP	PPI Input (YoY)		-2.90%	-1.20%
18-Feb-14	GBP	PPI Output (YoY)		0.80%	1.00%
18-Feb-14	GBP	RPI (YoY)		2.70%	2.70%
18-Feb-14	USD	NY Empire State Manufacturing Index		10	12.51
18-Feb-14	USD	TIC Net Long-Term Transactions			-29.3B
19-Feb-14	GBP	Claimant Count Change		-20.0K	-24.0K
19-Feb-14	GBP	Unemployment Rate		7.10%	7.10%
19-Feb-14	USD	Jobless Claims Change			
19-Feb-14	USD	MBA 30-Year Mortgage Rate			4.45%
19-Feb-14	USD	Building Permits (MoM)			-2.60%
19-Feb-14	USD	Housing Starts (MoM)			-9.80%
19-Feb-14	USD	PPI (YoY)		1.20%	1.20%
20-Feb-14	JPY	Trade Balance		-2,489B	-1,302B
20-Feb-14	CNY	Chinese HSBC Manufacturing PMI			49.5
20-Feb-14	EUR	Manufacturing PMI		54	54
20-Feb-14	EUR	Services PMI		51.9	51.6
20-Feb-14	GBP	Retail Sales (YoY)		5.00%	5.30%
20-Feb-14	USD	Initial Jobless Claims			
20-Feb-14	USD	CPI (YoY)		1.50%	1.50%
20-Feb-14	USD	Manufacturing PMI			53.7
20-Feb-14	USD	CB Leading Index (MoM)		0.20%	0.10%
20-Feb-14	USD	Philadelphia Fed Manufacturing Index		10	9.4
21-Feb-14	EUR	Trade Balance		14.5B	16.0B
21-Feb-14	USD	Existing Home Sales		4.70M	4.87M

Indian Economic Calendar

Date	Curr.	Event	Actual	Forecast	Previous
19-Feb-14	INR	Indian M3 Money Supply			14.50%
21-Feb-14	INR	Indian Bank Loan Growth			14.70%

Disclaimer:

This report is for the personal information of the authorized recipient and does not constitute to be any investment, legal or taxation advice to you. Ashika Stock Broking Ltd., is not soliciting any action based upon it. This report is not for public distribution and has been furnished to you solely for your information and should not be reproduced or redistributed to any other person in any form. The report is based upon information that we consider reliable, but we do not represent that it is accurate or complete, and it should not be relied upon such. Ashika Stock Broking Ltd. or any of its affiliates or employees shall not be in anyway responsible for any loss or damage that may arise to any person from any inadvertent error in the information contained in this report. Ashika Stock Broking Ltd., or any of its affiliates or employees do not provide, at any time, any express or implied warranty of any kind, regarding any matter pertaining to this report, including without limitation the implied warranties of merchantability, fitness for a particular purpose, and non-infringement. The recipients of this report should rely on their own investigations. "Ashika Stock Broking Ltd., and/or its affiliates and /or employees may have interests/positions, financial or otherwise in the securities mentioned in this report."