

Equity	Latest	% Chg	NSE Sect. Indices	Latest	% Chg
Nifty	6167	(0.81)	CNX IT	9329	1.76
Sensex	20709	(0.73)	BANK NIFTY	11087	(2.38)
DowJones	16179	0.07	S&P CNX 500	4781	(0.60)
Nasdaq	4058	(0.29)	CNX FMCG	16617	(0.35)
Hangseng	22788	(0.44)	CNX REALTY	176	(0.68)
Shanghai	2113	(0.67)	CNX AUTO	5216	(0.24)
Nikkei	15778	(0.51)	CNX ENERGY	7661	(1.30)
Strait Times	3076	0.18	CNX PHARMA	7598	1.07
Kospi	1979	0.15	Advances / Declines	BSE	NSE
Taiwan	8430	0.27	Advances	1131	361
FTSE	6585	1.43	Declines	1287	495
CAC	4177	1.64	Unchanged	157	48
DAX	9336	1.68	Total	2575	904

Nifty Gainers		
Company	Price(Rs)	Chg(%)
HCLTECH	1244.55	3.93
MARUTI	1784.00	3.12
RANBAXY	451.70	2.38
LUPIN	912.25	2.30
WIPRO	533.50	2.26

Nifty Losers		
Company	Price(Rs)	Chg(%)
KOTAKBANK	723.00	(3.63)
ICICIBANK	1062.50	(3.04)
ONGC	273.20	(2.86)
LT	1062.80	(2.74)
HDFC	778.00	(2.54)

Vol. Shockers	Last Day (Lakh)	2 Wk Avg. (Lakh)	Vol. Ch. (Times)
CMC	0.40	0.01	48
Power Grid Corp	983.72	24.39	40
Liberty Shoes	5.66	0.20	28
Astrazeneca Phar	0.64	0.02	27
JUBL FOOD	1.93	0.22	9

Indian Forex	Closing	Chg	% Chg
USD/INR	62.380	0.462	0.75
GBP/INR	102.154	1.321	1.31
EUR/INR	85.295	0.025	0.03
JPY/INR	59.980	(0.180)	(0.30)

Precious Metal	Closing	Chg (Rs.)
Gold (Rs/10gm)	29400	(400)
Silver (Rs/1kg)	44025	(226)

Commodities	Price	% Chg.
Crude (US\$/BBL)	98.8	1.16
Brent (US\$/BBL)	110.0	0.56
Gold (US/oz)	1194.0	(2.12)
Silver (US\$/oz)	19.2	(2.04)
Copper (US\$/MT)	7218.5	(0.16)
Alum (US\$/MT)	1735.5	(0.80)
Zinc(US\$/MT)	1976.5	(0.93)

ADR	Cl. Values	% Chg.
ICICI Bank	35.95	(1.30)
HDFC Bank	34.29	(1.42)
Infosys	56.55	0.35
Sterlite Inds.	6.22	0.00
Dr. Deddy's Labs	39.80	(0.49)
Wipro	12.14	0.18
Tata Motors	30.04	(0.27)

Market Sensor

US market closed near unchanged on Thursday, with the Dow rising to a record, as investors sorted through economic data that sent differing signals on the economy. Dow Jones Industrial Average was up 0.07% or 11.11 points at 16179.08 Nasdaq Composite was down 0.29% or 11.93 points at 4058.14 Standard & Poor's 500 was down 0.06% or 1.05 points at 1809.60.

Post Fed's decision to QE tapering has brought back fear of down-sizing the FII's allocation to emerging markets like India and profit booking was evident in our domestic market. Nifty ended the previous trading session with a decline of 0.81% or 50.50 points at 6166.65. On Thursday's trading session, FIIs bought net Rs.2264.11 Cr in cash market and sold net Rs.41.59 in derivative segment. Whereas, DII sold net Rs.176.01 Cr in cash segment.

Coming to today's trade day Nifty to remain volatile. Crucial intraday support in Nifty exist at 6130 followed by 6100 while resistance is seen at 6210 followed by 6250.

Global News

❖ The Federal Reserve is likely to reduce its bond purchases in \$10 billion increments over the next seven meetings before ending the program in December 2014, economists said. (Bloomberg)

❖ The gauge of leading indicators rose more than forecast in November, underscoring the Federal Reserve's view of an improving U.S. economy. (Bloomberg)

❖ The Federal Reserve's balance sheet reached a record \$4 trillion, as the central bank pushed on with its unprecedented asset-purchase program. (Bloomberg)

❖ Previously owned U.S. home sales declined for the third consecutive month in November to the lowest level of the year as rising mortgage rates and a limited supply of properties discouraged buyers. (Bloomberg)

❖ Japanese companies' cash holdings rose to a record last quarter, highlighting Prime Minister Shinzo Abe's struggle to spur the investment and wage increases needed to end a 15-year deflationary malaise. (Bloomberg)

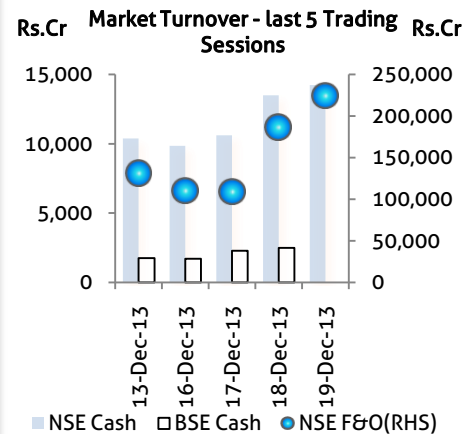
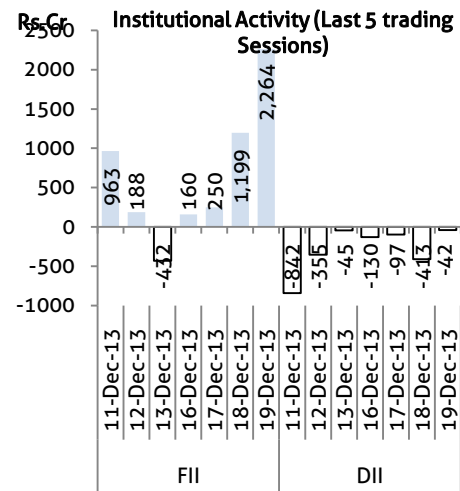
❖ Treasury Secretary Jacob J. Lew warned Congress that the U.S. will exhaust its borrowing authority as soon as late February and urged lawmakers to raise the federal debt limit weeks before then. (Bloomberg)

Economic News

- ❖ The government decided to provide interest-free loans of Rs 6,600 crore to cash-starved sugar mills to make payments to cane farmers. (BS)
- ❖ The government cut minimum export price (MEP) of onions by more than half to \$350 (Rs 21,812) per tonnes from \$800 (Rs 49,856) a tonne with immediate effect to help stabilize the falling domestic prices. (BS)
- ❖ Amid high food inflation, a report by Indian Council for Research on International Economic Relations (ICRIER) said allowing FDI in multi-brand retail alone will not help in fighting surging prices, but much will depend on how the food processing sector is treated under the new Goods and Services Tax Regime and whether there will be a single GST. (BS)
- ❖ The Coal Ministry has issued show cause notices to Adani Power and Jayaswal Neco Industries Ltd for delays in developing the mines allocated to them for captive use. (BS)
- ❖ India has added Italy's ENI to a list of foreign firms that can sell crude oil at official prices to state refiners, sources said, in the first such revision to the list since 2001. (BS)
- ❖ India imported 5.75 million tonnes of urea valued at \$1.64 billion in the first eight months of this financial year to meet domestic demand as the cost of inward shipments eased. (BS)
- ❖ India has added Italy's ENI to a list of foreign firms that can sell crude oil at official prices to state refiners, sources said, in the first such revision to the list since 2001. (BS)
- ❖ United Nations has lowered India's economic growth forecast for 2013 to 4.8% while warning that emerging markets should be prepared to deal with the impact of US Federal Reserve's quantitative easing programme. (BS)
- ❖ Agriculture Minister Sharad Pawar said the processed food industry is facing problems due to the existing tax regime and hoped the implementation of the proposed GST would benefit the sector. (BS)
- ❖ India is one of the largest export after-sales market for auto components but trade with the country was still poor owing to more demand of cheaper variants, Chinese auto parts makers have said. (BS)
- ❖ Finance Minister P Chidambaram said that \$10 billion reduction in \$85-billion bond-buying programme by the US Federal Reserve is a moderate change and the markets will not be surprised by these changes. (BS)

Global Forex	Closing	Chg	% Chg
EUR-USD	1.3643	(0.0018)	(0.13)
GBP-USD	1.6366	(0.0004)	(0.02)
USD-JPY	104.34	0.09	0.09

Bond Markets	Closing	Chg
10-yr bond	9.03	-5.0 bps
Interbank call	8.78	-4.0 bps



Domestic News

- ❖ Telecom major Bharti Airtel may increase mobile call rates by 10 to 20%, equity research firm Nomura said in a report. (BS)
- ❖ Infrastructure financing firm IDFC, which has applied to RBI for a bank licence, said it is not eligible to obtain one as foreign shareholding in the institution exceeds the permissible limit of 50% and is working to meet the norms. (BS)
- ❖ Bangalore-based public sector lender Canara Bank on Thursday said it has received approval to open a branch in New York. (BS)
- ❖ The Cabinet Committee on Economic Affairs cleared a proposal allowing state-run Coal India Ltd (CIL) to explore coal bed methane (CBM) from its existing coal blocks on a nomination basis. (BS)

Domestic News (Cont...)

❖ The Ministry of Home Affairs is likely to give clearance to Vodafone's Rs 10,141 crore foreign investment proposal to buy out minority shareholders in its Indian arm. (BS)

❖ IDFC is looking at steps to bring down the ceiling limit for foreign shareholding to 49.9% to comply with the guidelines for new bank license in private sector. The present ceiling is at 54% and the Foreign Shareholding as on December 6, 2013 was 51.27%. (BS)

❖ Essar Steel, JSPL and state-run KIOCL have evinced interest in participating as the partner in the Rs 2,200-crore joint venture between NMDC and RINL for setting up a 450-km slurry pipeline and a pellet plant. (BS)

❖ State-owned Power Grid Corp said it would utilise the proceeds worth about Rs 5,400 crore from the follow-on public offer towards 27 transmission projects. (BS)

❖ An inter-ministerial panel will on Friday decide on the contentious issue of coal supply to NTPC's coming North Karanpura super thermal power project in Jharkhand. (BS)

❖ Wind turbine maker Suzlon said its arm REpowerSystems has bagged two contracts for supplying 20 wind turbines in France. (BS)

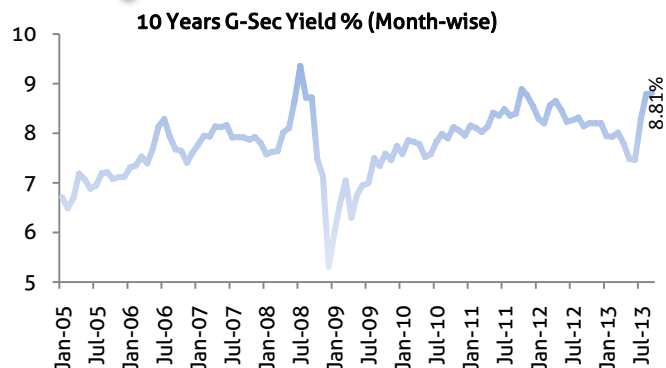
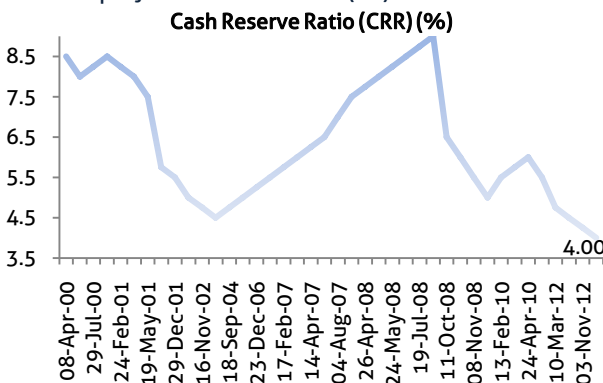
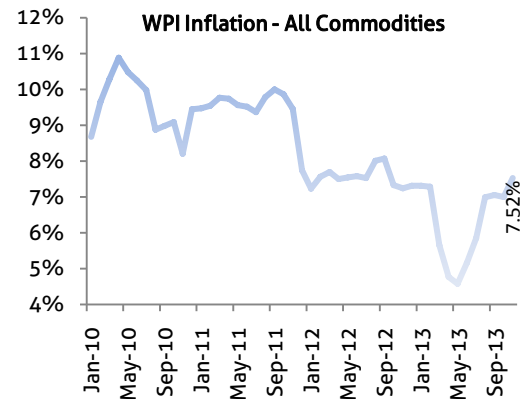
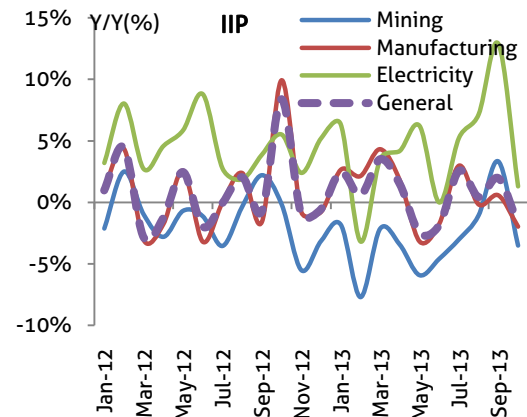
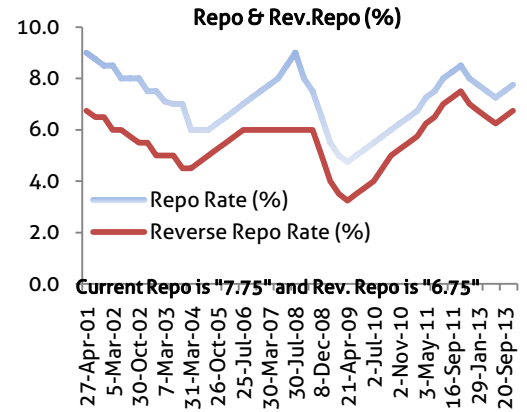
❖ Oil major ONGC on Thursday raised serious concern over the precarious energy scenario in the country where the demand is growing at a much faster pace than the supply. (BS)

❖ Indian IT services market is expected to grow at the rate of 8.3% year on year in CY 2013 reaching a value of Rs 44,219.9 crore (\$7.97 billion). For the first half of CY2013 the market grew at 7.6% to reach a value of Rs 24,338.7 crore (\$4.4 billion), said a report from IDC. (BS)

❖ A drive through a long endless dark tunnel best describes the journey of India's auto sector in 2013, during which the industry witnessed record spell of decline in sales, vehicle recalls and strikes. (BS)

❖ SKS Microfinance Limited, the only listed micro finance institution in the country, stated that it had completed the third substantial microfinance securitisation during the current financial year of Rs 215 crore. (BS)

❖ Coimbatore-based Lakshmi Machine Works (LMW) has forayed into real estate sector by joining hands with Bangalore-based Sobha Developers Limited. The partners are coming out with a residential project in Coimbatore. (BS)



Bulk Deal - NSE

Date	Security Name	Client Name	Buy/Sell	Traded Qty.	Price
19-Dec-13	Apollo Tyres Ltd.	SWISS FINANCE CORPORATION (MAURITIUS) LIMITED	SELL	3837582	89.71
19-Dec-13	Multi Commodity Exchange	EURONEXT N. V.	SELL	565000	427.02
19-Dec-13	Orchid Chemicals Ltd.	CROSSEAS CAPITAL SERVICES PVT. LTD.	BUY	492256	62.38
19-Dec-13	Sanwaria Agro Oils Limite	CRB TRUSTEE LIMITED A/C CRB MUTUAL FUND	SELL	2140447	9.64
19-Dec-13	Mastek Ltd	INDIA INVESTMENT PARTNERS LIMITED A/C ICG Q LIMITED	SELL	130328	134.54

Bulk Deal - BSE

Date	Security Name	Client Name	Buy/Sell	Traded Qty.	Price
19-Dec-13	Inventure Growth	ARUNA SACHIN SHAH	B	728,000	10
19-Dec-13	Gini Silk-\$	HEM CHAND JAIN	B	173,820	32.69
19-Dec-13	Zyden Gentec	PUNJAB NATIONAL BANK	S	150,000	24.95
19-Dec-13	Rushil Decor	ANKITKUMAR DINESHKUMAR RAVAL	S	78,897	43.87
19-Dec-13	ACI Infocom	VIRAJ MERCANTILE PVT LTD	S	750,000	3.44

Corporate Actions

Scrip Code	Scrip Name	Ex-Date	Purpose	Record Date
517334	Motherson Sumi	20-Dec-13	BONUS 1:2	-
517548	Starlite Comp	20-Dec-13	Reduction of Capital	-
517463	Linaks Micro	23-Dec-13	Reduction of Capital	24-Dec-13
531322	Shri Shakti Lpg	23-Dec-13	Reduction of Capital	24-Dec-13
511208	IL&FS Invest Mgrs	26-Dec-13	BONUS 1:2	-
530701	KDJHRL	26-Dec-13	Stock Split from Rs.10/- to Rs.2/-	27-Dec-13
531963	Universal Cred	26-Dec-13	Stock Split from Rs.10/- to Rs.5/-	27-Dec-13
511333	VLS Finance	26-Dec-13	Buy Back of Shares	27-Dec-13

Global Economic Calendar

Date	Curr.	Event	Actual	Forecast	Previous
16-Dec-13	JPY	Tankan Large Manufacturers Index		15	12
16-Dec-13	EUR	Manufacturing PMI		51.9	51.6
16-Dec-13	EUR	Services PMI		51.4	51.2
16-Dec-13	USD	Nonfarm Productivity (QoQ)		2.20%	1.90%
16-Dec-13	USD	NY Empire State Manufacturing Index		4.5	-2.21
16-Dec-13	USD	TIC Net Long-Term Transactions			25.5B
16-Dec-13	USD	Industrial Production (MoM)		0.40%	-0.10%
17-Dec-13	GBP	CPI (YoY)		2.30%	2.20%
17-Dec-13	GBP	PPI Output (YoY)		0.90%	0.80%
17-Dec-13	GBP	RPI (YoY)		2.80%	2.60%
17-Dec-13	EUR	CPI (YoY)		0.90%	0.90%
17-Dec-13	USD	CPI (MoM)		0.10%	-0.10%
17-Dec-13	USD	Current Account		-100.9B	-98.9B
18-Dec-13	JPY	Trade Balance		-1,320B	-1,091B
18-Dec-13	GBP	Unemployment Rate		7.60%	7.60%
18-Dec-13	USD	MBA 30-Year Mortgage Rate			4.61%
18-Dec-13	USD	Building Permits		1.000M	1.034M
18-Dec-13	USD	Housing Starts		0.915M	
19-Dec-13	EUR	Current Account			13.7B
19-Dec-13	GBP	Retail Sales (MoM)		0.20%	-0.70%
19-Dec-13	USD	CB Leading Index (MoM)		0.60%	0.20%
19-Dec-13	USD	Existing Home Sales (MoM)		1.60%	-3.20%
19-Dec-13	USD	Initial Jobless Claims			
19-Dec-13	USD	Philadelphia Fed Manufacturing Index		10	6.5
19-Dec-13	USD	FOMC Rate Decision			
20-Dec-13	GBP	Current Account		-13.7B	-13.0B
20-Dec-13	GBP	GDP (QoQ)		0.80%	0.80%
20-Dec-13	USD	GDP (QoQ)		3.60%	3.60%
20-Dec-13	USD	Real Consumer Spending			1.40%
20-Dec-13	EUR	Consumer Confidence		-15	-15.4

Indian Economic Calendar

Date	Curr.	Event	Actual	Forecast	Previous
16-Dec-13	INR	Indian WPI (YoY)		7.00%	7.00%
18-Dec-13	INR	Indian Interest Rate Decision			7.75%

Disclaimer:

This report is for the personal information of the authorized recipient and does not constitute to be any investment, legal or taxation advice to you. Ashika Stock Broking Ltd., is not soliciting any action based upon it. This report is not for public distribution and has been furnished to you solely for your information and should not be reproduced or redistributed to any other person in any form. The report is based upon information that we consider reliable, but we do not represent that it is accurate or complete, and it should not be relied upon such. Ashika Stock Broking Ltd. or any of its affiliates or employees shall not be in anyway responsible for any loss or damage that may arise to any person from any inadvertent error in the information contained in this report. Ashika Stock Broking Ltd., or any of its affiliates or employees do not provide, at any time, any express or implied warranty of any kind, regarding any matter pertaining to this report, including without limitation the implied warranties of merchantability, fitness for a particular purpose, and non-infringement. The recipients of this report should rely on their own investigations. "Ashika Stock Broking Ltd., and/or its affiliates and /or employees may have interests/positions, financial or otherwise in the securities mentioned in this report."