

Equity	Latest	% Chg	NSE Sect. Indices	Latest	% Chg
Nifty	6155	1.05	CNX IT	10101	1.30
Sensex	20701	0.80	BANK NIFTY	10554	1.21
DowJones	16103	(0.19)	S&P CNX 500	4763	0.98
Nasdaq	4263	(0.10)	CNX FMCG	16556	1.35
Hangseng	22568	0.78	CNX REALTY	154	(0.16)
Shanghai	2114	(1.17)	CNX AUTO	5286	0.50
Nikkei	14866	2.88	CNX ENERGY	7491	0.74
Strait Times	3100	0.43	CNX PHARMA	7903	0.02
Kospi	1958	1.41	Advances / Declines	BSE	NSE
Taiwan	8602	0.91	Advances	1457	842
FTSE	6838	0.37	Declines	1219	546
CAC	4381	0.59	Unchanged	140	119
DAX	9657	0.40	Total	2816	1507

Nifty Gainers		
Company	Price(Rs)	Chg(%)
AMBUJACEM	162.30	6.25
ACC	1068.80	6.04
ULTRACEMCO	1799.00	5.70
HCLTECH	1540.00	4.56
BPCL	362.20	4.44

Nifty Losers		
Company	Price(Rs)	Chg(%)
BHARTIARTL	288.40	(2.86)
RANBAXY	353.60	(2.00)
DLF	142.30	(0.94)
CIPLA	368.50	(0.73)
MARUTI	1672.70	(0.63)

Vol. Shockers	Last Day (Lakh)	2 Wk Avg. (Lakh)	Vol. Ch. (Times)
Zyduz Wellness-\$	2.23	0.24	9
NAVNETEDUL	11.27	1.24	9
Geometric	7.49	0.98	8
SANOFI	0.35	0.05	7
Shoppers Stop	4.52	0.64	7

Indian Forex	Closing	Chg	% Chg
USD/INR	62.162	(0.123)	(0.20)
GBP/INR	103.444	(0.397)	(0.38)
EUR/INR	85.269	(0.431)	(0.50)
JPY/INR	60.660	(0.510)	(0.83)

Precious Metal	Closing	Chg (Rs.)
Gold (Rs/10gm)	30500	0
Silver (Rs/1kg)	47558	229

Commodities	Price	% Chg.
Crude (US\$/BBL)	102.2	(0.50)
Brent (US\$/BBL)	109.9	(0.39)
Gold (US/oz)	1323.6	0.27
Silver (US\$/oz)	21.8	0.41
Copper (US\$/MT)	7211.5	0.37
Alum (US\$/MT)	1734.0	0.96
Zinc(US\$/MT)	2060.0	1.23

ADR	Cl. Values	% Chg.
ICICI Bank	34.40	0.25
HDFC Bank	33.03	(0.27)
Infosys	60.81	(0.03)
Sterlite Inds.	6.22	0.00
Dr. Deddy's Labs	43.83	(0.05)
Wipro	13.28	0.17
Tata Motors	32.82	0.52

Market Sensor

US market fell on Friday, with the Nasdaq Composite posting a third weekly gain, as investors considered results from companies including Intuit and another downbeat economic report, this one on housing. Dow Jones Industrial Average was down 0.19% or 29.93 points at 16103.30. Nasdaq Composite was down 0.10% or 4.13 points at 4263.41. Standard & Poor's 500 was down 0.19% or 3.53 points at 1836.25.

Indian equity market ended the last trading day of the week in green. Technology and Cement stocks lifted the market sentiment. Nifty ended the previous trading session with a gain of 1.05% or 64.00 points at 6155.45. On Friday's trading session, FIIs bought net Rs.603.41 Cr in cash market and bought net Rs.407.75 in derivative segment. Whereas, DII sold net Rs.381.55 Cr in cash segment.

Coming to today's trade Nifty to remain volatile crucial intraday support in Nifty exists at 6130 followed by 6070 while resistance is seen at 6190 followed by 6230.

Global News

❖ Sales of previously owned U.S. homes dropped in January to the lowest level in more than a year as harsh winter weather combined with a lack of supply, strict lending rules and declining affordability to depress demand. (Bloomberg)

❖ The day after Lehman Brothers Holdings Inc. declared the largest bankruptcy in U.S. history in 2008, Federal Reserve officials remained unsure whether the financial crisis would do lasting damage to the U.S. economy. (Bloomberg)

❖ Britain posted a smaller-than-forecast budget surplus in January as taxes from incomes and company profits fell. (Bloomberg)

❖ The U.S. economy may prove more prone to deflation than the Federal Reserve acknowledges and that may present a reason to keep monetary policy loose, according to a model created by Wells Fargo Securities LLC. (Bloomberg)

❖ The Group of 20 will take "concrete actions" to bolster growth while backing the normalization of monetary policy in advanced economies, according to a draft communique seen by Bloomberg News. (Bloomberg)

Economic News

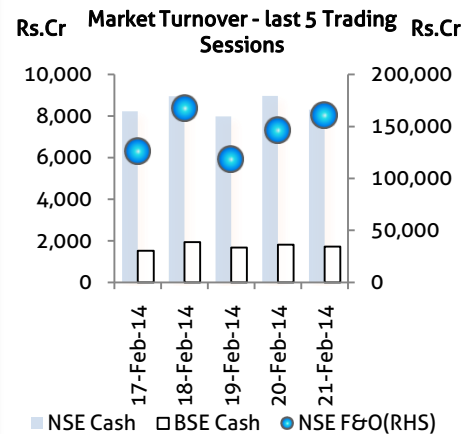
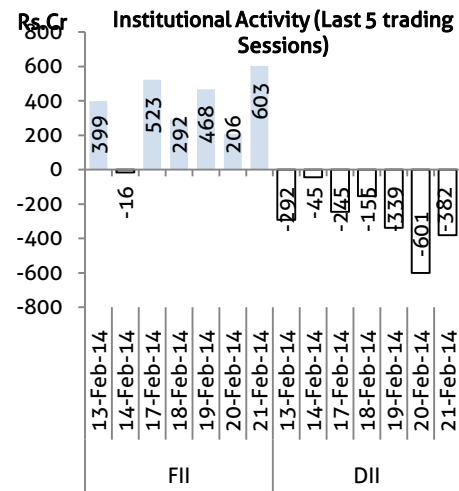
- ❖ Indian Railways is aiming to generate more than Rs 5,000 crore next year by monetising its land reserve. (BS)
- ❖ Himachal Pradesh's public debt is a whopping Rs.20,765 crore in 2012-13 and it increased by over Rs.5,000 crore in five years, the Comptroller and Auditor General of India (CAG) said Friday. (BS)
- ❖ The central government has made it mandatory for its employees going on study leave to sign a bond confirming their commitment to put in requisite active service after expiry of the leave period. (BS)
- ❖ Government has detected undisclosed income of Rs 34,958 crore and seized assets worth over Rs 2,255 crore in the past three financial years, Parliament was informed. (BS)
- ❖ Among the flurry of proposals cleared by the cabinet yesterday was the terms of reference for the new Pay Commission. Despite economic growth taking a tumble - from over 9% to sub 5% - and the government caught in a fiscal bind as revenues diminish, non plan expenditure is all set to swell as government babus get a boost in their salaries with the 7th Pay Commission kicking in from 2016. (BS)
- ❖ Chhattisgarh government is mooting a plan to simplify the norms at its end for mining sand minerals in a move aimed to bestow relief to the common man. (BS)
- ❖ Tamil Nadu Government signed 16 MoUs, committing Rs 5,081 crore as investments. (BS)
- ❖ The Coal Ministry has received 32 applications from companies like NMDC and RINL in response to the notice inviting applications for allocation of four coal blocks on tariff-based bidding. (BS)
- ❖ India is "stuck in a rut" as weaker consumption and stalled investments prevent the economy from building any sort of momentum, HSBC said in a report adding "slow recovery" could start post elections. (BS)
- ❖ Subsidised LPG cylinders can be purchased without having an Aadhaar account, the government informed the Lok Sabha. (BS)

Domestic News

- ❖ Power regulator Central Electricity Regulatory Commission (CERC) has deferred its order on a petition by Reliance Power seeking a mechanism to take care of the Rs 4,000 crore increase in costs in the construction and operation of its Sasan Ultra Mega Power Project. (BS)
- ❖ A group of investors led by Singapore-based Temasek and IDFC Consortium have agreed to pick up Compulsorily Convertible Preference Shares (CCPS) worth Rs 1,136.6 crore in Bangalore-based GMR Infrastructure Limited (GIL). (BS)
- ❖ Gold loan non-banking finance company (NBFC) Manappuram Finance is planning to raise up to Rs 200 crore through non-convertible debentures to meet working capital requirements. (BS)
- ❖ Ailing Air India, which was recently hit by LTC scam, has stumbled upon another case of fraud involving crores of rupees in a scheme meant for family members of the employees of the state-run airline. (BS)
- ❖ For the fourth consecutive year, Google, an American multinational corporation specializing in internet-related services and products has been declared as the most trusted internet brand by TRA's The Brand Trust Report, India Study, 2014. (BS)

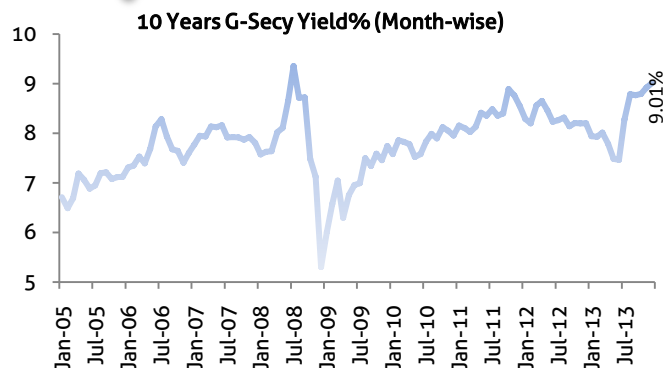
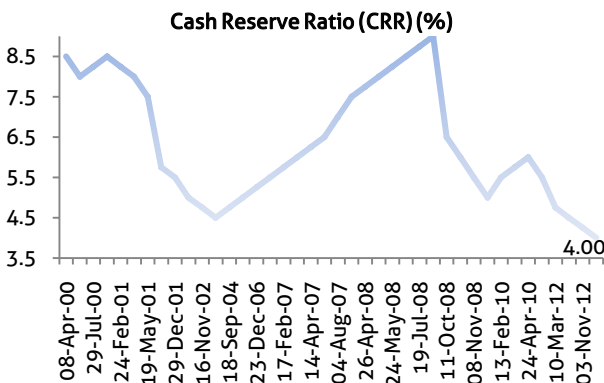
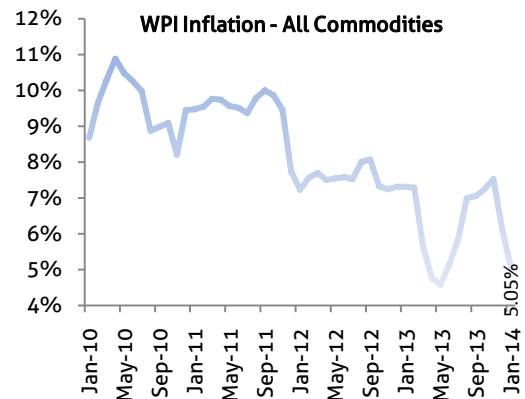
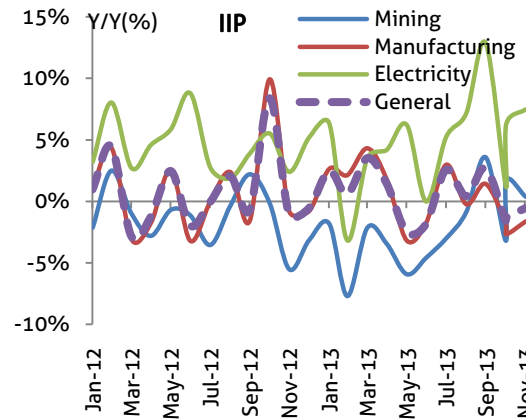
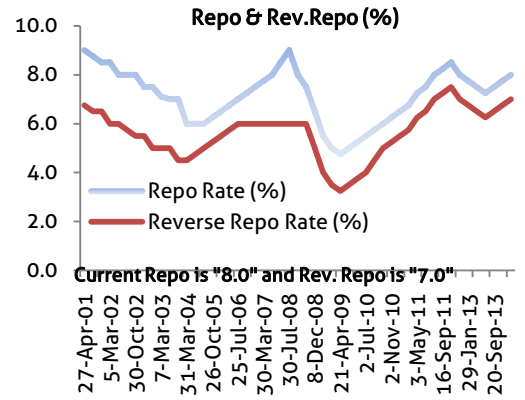
Global Forex	Closing	Chg	% Chg
EUR-USD	1.3746	0.0027	0.20
GBP-USD	1.6616	(0.0035)	(0.21)
USD-JPY	102.51	0.23	0.22

Bond Markets	Closing	Chg
10-yr bond	9.07	0.6 bps
Interbank call	7.93	4.0 bps



Domestic News (Cont...)

- ❖ A Boeing 777 aircraft of American carrier United Airlines was grounded at Mumbai airport on Thursday night after engineers found that its right engine cover was badly damaged, official sources said on Friday. (BS)
- ❖ IT services and solutions provider L&T Infotech has entered into a strategic partnership with global enterprise software testing solutions firm Tricentis. (BS)
- ❖ Karnataka, the largest producer of silk in the country, is witnessing steady decline in the area under mulberry cultivation. (BS)
- ❖ Auto major Tata Motors announced cut in prices by up to Rs 1.5 lakh across its product portfolio following excise duty reduction announced in the interim Budget. (BS)
- ❖ Infrastructure player IL&FS Transportation through its subsidiary in Spain, Elsamex SA, has bagged Rs 1,348.52 crore (\$216.7 million) worth road contracts in Botswana, which are financed by the World Bank. (BS)
- ❖ Shree Renuka Sugars' deal with Wilmar International Ltd has two main issues that is hurting the share price. First is the price at which Wilmar is buying a 27.5% stake in Renuka Sugars.
- ❖ Ford India announced reduction in the prices of its vehicles by up to Rs 1.07 lakh across various models after the excise duty cut announced in the interim Budget. (BS)
- ❖ Government said state-owned bank PNB has applied for opening branches in Pakistan and is awaiting approval from the competent authority. (BS)
- ❖ Shares of mid-and-small-sized information technology (IT) shares have rallied by up to 19% on back of heavy volumes on the bourses. (BS)
- ❖ Shares of cement manufacturer such as Ambuja Cements, UltraTech Cement, ACC, India Cements, Kesoram Industries and JK Lakshmi Cement have rallied by up to 8% on the Bombay Stock Exchange (BSE). (BS)
- ❖ United Bank of India has extended losses and hit a new low of Rs 23.40 after the chairperson and managing director Archana Bhargava took a voluntary retirement. Her resignation comes at a time when the state-run lender is saddled with losses and rising non-performing assets. (BS)



Bulk Deal - NSE

Date	Security Name	Client Name	Buy/Sell	Traded Qty.	Price
21-Feb-14	Cantabil Retail Ltd	AMAR PACKAGING PVT. LTD.	SELL	100000	19
21-Feb-14	JSW Holdings Limited	AXIS EQUITIES PRIVATE LIMITED	BUY	84608	582.7
21-Feb-14	JSW Holdings Limited	AXIS EQUITIES PRIVATE LIMITED	SELL	83108	583.15
21-Feb-14	Winsome Yarns Limited	FALGUN BABULAL SHAH (HUF)	SELL	367375	3.72
21-Feb-14	Advani Hotels & Resorts (SIRV PARVESH CHHIBBER	SELL	244000	31.54

Bulk Deal - BSE

Date	Security Name	Client Name	Buy/Sell	Traded Qty.	Price
21-Feb-14	Shoppers Stop	MIRAJ MARKETING COMPANY LLP	B	448,750	377
21-Feb-14	HIL	AMRIT STEELS PRIVATE LIMITED	S	77,873	266
21-Feb-14	ACI Infocom	KAUSHIK SHAH SHARES & SEC. LTD	S	1,500,000	7.2
21-Feb-14	Nikki Global	LEVIA TRADING PVT LTD	S	28,448	323.9
21-Feb-14	Urja Glob	EAST INDIA SECURITIES LTD	S	400,000	14.83

Corporate Actions

Scrip Code	Scrip Name	Ex-Date	Purpose	Record Date
506414	DIL	24-Feb-14	Interim Dividend - Rs.7.50	25-Feb-14
532859	Hinduja Glob	24-Feb-14	2nd Interim Dividend - Rs.5.00	25-Feb-14
524816	Natco Pharma	24-Feb-14	Interim Dividend - Rs.5.00	25-Feb-14
531717	Vidhi Dyestuffs-\$	24-Feb-14	Interim Dividend - Rs.0.20	25-Feb-14
522073	Hitech Gears	25-Feb-14	Interim Dividend - Rs.1.00	26-Feb-14
517380	Igarashi Motors	25-Feb-14	Interim Dividend - Rs.1.00	26-Feb-14
533154	INFINITE	25-Feb-14	Interim Dividend - Rs.2.00	27-Feb-14
532440	MPS	25-Feb-14	3rd Interim Dividend - Rs.7.00	26-Feb-14
532468	KAMAHOLDING-\$	26-Feb-14	2nd Interim Dividend - Rs.5.00	28-Feb-14
532899	Kaveri Seed	26-Feb-14	Interim Dividend - Rs.2.40	28-Feb-14
523539	Precision Wires	26-Feb-14	2nd Interim Dividend - Rs.4.00	28-Feb-14
532735	R Systems	26-Feb-14	Stock Split from Rs.10/- to Re.1/-	28-Feb-14
508954	SANJAY LEAS	26-Feb-14	Stock Split from Rs.10/- to Re.1/-	28-Feb-14
500870	Castrol India	28-Feb-14	Reduction of Capital	03-Mar-14
505712	Gujarat Auto	03-Mar-14	Stock Split from Rs.10/- to Rs.2/-	04-Mar-14
505537	Zee Entert	03-Mar-14	Scheme of Arrangement	04-Mar-14
532898	Power Grid Corp	04-Mar-14	Interim Dividend - Rs.-	05-Mar-14
533304	C. Mahendra Exports	05-Mar-14	Interim Dividend - Rs.0.10	06-Mar-14
532234	National Alum	05-Mar-14	Interim Dividend - Rs.-	06-Mar-14
502407	Nath Pulp	06-Mar-14	Consolidation of Shares	07-Mar-14
502407	Nath Pulp	06-Mar-14	Reduction of Capital	07-Mar-14
506260	Anuh Pharma	07-Mar-14	Interim Dividend - Rs.1.25	10-Mar-14

Global Economic Calendar

Date	Curr.	Event	Actual	Forecast	Previous
24-Feb-14	EUR	CPI (YoY)		0.70%	0.70%
24-Feb-14	USD	Chicago Fed National Activity			0.16
24-Feb-14	USD	Dallas Fed Mfg Business Index			3.8
25-Feb-14	USD	Chain Store Sales (YoY)			2.10%
25-Feb-14	USD	House Price Index (YoY)			7.60%
25-Feb-14	USD	S&P/CS HPI Composite - 20 (YoY)		13.10%	13.70%
25-Feb-14	USD	CB Consumer Confidence		80.1	80.7
25-Feb-14	USD	Richmond Manufacturing Index			12
26-Feb-14	GBP	GDP (YoY)		2.80%	2.80%
26-Feb-14	USD	MBA 30-Year Mortgage Rate			4.50%
26-Feb-14	USD	New Home Sales		410K	414K
27-Feb-14	USD	Durable Goods Orders (MoM)		-0.50%	-4.20%
27-Feb-14	EUR	Consumer Confidence		-13	-11.7
27-Feb-14	USD	KC Fed Manufacturing			5
28-Feb-14	JPY	Manufacturing PMI			56.6
28-Feb-14	JPY	Household Spending (YoY)		0.20%	0.70%
28-Feb-14	JPY	Tokyo CPI (YoY)			0.70%
28-Feb-14	JPY	Industrial Production (MoM)		3.00%	0.90%
28-Feb-14	JPY	Construction Orders (YoY)			4.90%
28-Feb-14	EUR	Unemployment Rate		12.00%	12.00%
28-Feb-14	USD	GDP (QoQ)		2.70%	3.20%
28-Feb-14	USD	Chicago PMI		58.2	59.6
28-Feb-14	USD	Michigan Consumer Sentiment			81.2
28-Feb-14	USD	Pending Home Sales (MoM)		3.50%	-8.70%

Indian Economic Calendar

Date	Curr.	Event	Actual	Forecast	Previous
28-Feb-14	INR	Indian GDP Quarterly (YoY)			4.80%

Disclaimer:

This report is for the personal information of the authorized recipient and does not constitute to be any investment, legal or taxation advice to you. Ashika Stock Broking Ltd., is not soliciting any action based upon it. This report is not for public distribution and has been furnished to you solely for your information and should not be reproduced or redistributed to any other person in any form. The report is based upon information that we consider reliable, but we do not represent that it is accurate or complete, and it should not be relied upon such. Ashika Stock Broking Ltd. or any of its affiliates or employees shall not be in anyway responsible for any loss or damage that may arise to any person from any inadvertent error in the information contained in this report. Ashika Stock Broking Ltd., or any of its affiliates or employees do not provide, at any time, any express or implied warranty of any kind, regarding any matter pertaining to this report, including without limitation the implied warranties of merchantability, fitness for a particular purpose, and non-infringement. The recipients of this report should rely on their own investigations. "Ashika Stock Broking Ltd., and/or its affiliates and /or employees may have interests/positions, financial or otherwise in the securities mentioned in this report."