

Technical Report

Closing Brief

Sensex gained marginally by 24 points to close at 26169 and Nifty gained 20 points to close at 7955. Better than expected quarterly GDP number and positive global cues lifted the market. RBI announced credit policy, kept its key repo rate unchanged at 6.75 percent today, as was widely expected in the market.

Technical Build up

- ❖ Doji candle with increase in volume
- ❖ Buy crossover in oscillators.
- ❖ Upper band of Bollinger exist at 8095
- ❖ Crucial moving average of 20/50 SMA are at 7896 and 7990
- ❖ 200 SMA trend deciding level exist at 8305

Outlook for the day

Indian equity market upheld its prevailing consolidation bias and ended marginally in green after trading in a narrow range. The monetary policy review turned out to be a non-event as RBI kept the key rates unchanged and that was in line with the market expectation. On the technical front movement in the Nifty was narrow and the index remained within its previous week's price range. Since there is no major change in the weekly chart structure, emphasis should continued to hold strong for 'Inverted Hammer' pattern formed last week. The pattern would get activated once the high of 7937 is scaled and if it does so then Nifty can head higher till 8100. On the oscillator front, MACD has rolled bullish on daily chart. The rebound rally off Fibonacci retracement level of 7715 has more upside in the near-term. Nifty faces immediate hurdles at 7907 & 7913 (21 DEMA) which if cleared will open upside potential towards 8000 and 8100 whereas downside is likely to be supported from the rising trend line at 7750. On the F&O front marginal rise in OI followed by rise in price were noticed indicating long buildup. IndiaVIX decreased marginally while basis and CoC also increased in the previous trading session. On the option front Call writing continues to outnumber Put writing.

World Indices	LTP	Daily Ch(Pts)	Daily Ch(%)
Dow Jones	17888	168	0.95
Nasdaq	5156	47	0.93
S&P 500	2102	22	1.07
FTSE 100	6395	39	0.62
DAX	11261	-120	-1.06
Hang Seng	22506	124	0.56
Nikkei	19985	-20	-0.10
Sensex	26169	23	0.09
Nifty	7954	19	0.25

Commodity /Forex	LTP	Daily Ch(Pts)	Daily Ch(%)
Gold (\$/Oz)	1068.80	5.30	0.50
Silver (\$/Oz)	14.17	0.09	0.62
Copper(USD/lb.)	207.95	0.80	0.39
Brent Crude(USD/bbl)	44.28	-0.16	-0.36
USD/INR	66.49	-0.17	-0.26
USD/YEN	122.95	0.08	0.07
USD/EUR	1.0619	-0.0014	-0.13

Support/Resistance levels for Indian Equity Indices					
	S1	S2	CMP	R1	R2
Sensex	26202	25925	26169	26290	26390
Nifty	7910	7880	7954	7990	8020
Nifty (Fut)	7940	7920	7987	8030	8040

Pivot Level	
Sensex	26178
Nifty	7953

US: US market closed near session highs Tuesday, the first trading day of December, shaking off intraday pressure from weak manufacturing data. Technically DJIA is presently trading at the 5th leg through Elliot wave count with negative divergence in oscillators.

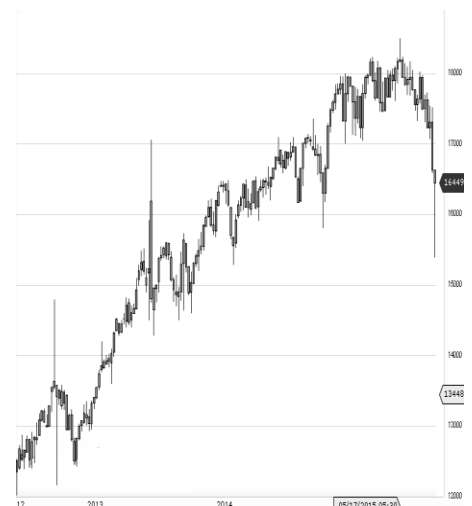


Increase in OI with Increase in Price (Long Buildup)

Symbol	Prev OI	Curr OI	OI Chg (%)	Curr Pr.	Pr.Chg (%)
MINDTR					
EE	795	1026	29.1	1494.1	3.30
HAVELL S	2411	2663	10.5	296.45	3.00
PETRON ET	2171	2329	7.3	238.5	1.90
JSWSTE EL	17680	18710	5.8	951.5	4.70
GODREJI ND	1451	1532	5.6	384.2	0.30

Increase in OI with Decrease in Price (Short Buildup)

Symbol	Prev OI	Curr OI	OI Chg (%)	Curr Pr.	Pr.Chg (%)
BHARTI ARTL	14839	16293	9.8	324.95	-3.5
AXISBA NK	41605	45287	8.9	465.20	-1.5
POWER GRID	3335	3628	8.8	135.45	-0.3
ADANIP ORTS	21017	22312	6.2	265.05	-1.7
BHARAT FORG	7318	7741	5.8	853.0	-0.4



Nifty gained by 0.25% with Nifty future added 3.3 lakh shares in open interest and stock future added 573.4 lakh shares in open interest.

- Nifty PCR decreased to 0.86 from 0.90
- Total Nifty Calls added 37.0 lakh shares in open interest.
- Total Nifty Puts added 11.2 lakh shares in open interest.
- Maximum open interest (Nifty) in Calls for Oct. series is at 8500 and 8000 put.
- FII's sold net Rs.106.78 (provisional), while DIIs bought net Rs.194.75 Cr in cash market.
- FII bought net Rs.788.79 Cr. In F&O
- Securities in Ban Period: NIL

Nifty Tracker

PARTICULARS	01/12/2015	30/11/2015	27/11/2015	26/11/2015
Spot	7954.9	7935.25	7942.7	7883.8
% Change in Spot	0.25%	-0.09%	0.75%	0.67%
Nifty(FUT) Dec	7987.75	7980.1	7972.2	7929.05
Nifty(FUT) Dec Vol.	106700	108287	139963	122834
Nifty(FUT) Dec - OI	19505850	19202025	18727050	18777900
Nifty(FUT) Jan	8023.3	8015.7	8009.8	7965.35
Nifty(FUT) Jan Vol.	2328	1840	3889	3366
Nifty(FUT) Jan - OI	812550	785775	770250	689925

Trade Statistics for 01/12/2015

PARTICULARS	NO. OF CONTRACTS	TURNOVER (RS. CR.)	PUT CALL RATIO
NSE Index Futures	1,96,080	11102	-
NSE Stock Futures	4,47,306	23316	-
NSE Index Options	16,19,740	95829	-
NSE Stock Options	1,80,458	9707	0.44
NSE F&O Total Turnover	24,43,584	139,954	0.78
NSE Cash Turnover	-	16258	-
BSE Cash Turnover	-	2,994.91	-
Total Turnover	-	159207	-

FII Corner (F&O)

FII NET BUYING/SELLING & CHANGE IN OPEN INTEREST (Cr. Rupee)						
PARTICULARS	01/12/2015		30/11/2015		27/11/2015	
	Net Buying /Selling	Change In Open interest	Net Buying /Selling	Change In Open interest	Net Buying /Selling	Change In Open interest
Index Future	-323	984	757	171	302	233
Index option	1304	4077	616	1911	2734	7598
Stock Future	-204	1121	-262	1707	349	831
Stock option	11	257	107	358	144	1030
Total	788	6439	1218	4146	3529	9691

Market Open Interest

ADDITION/REDUCTION IN MARKET OPEN INTEREST					
Contracts	01/12/2015	30/11/2015	27/11/2015	26/11/2015	24/11/2015
Index Futures	431	348	-7820	1798	1180
Index Options	1186	2453	-11065	3189	627
Stock Futures	4775	3580	-63181	13484	317
Stock Options	1291	1511	-15493	1274	-263
F&O Total	7683	7892	-97559.36	19744.92	1860.8

Nifty Option Open Interest Statistics

NIFTY OPTIONS HIGHEST ADDITION IN OPEN INTEREST						
Expiry	Strike	Option Type	Settlement Price	Volume	Open Interest	Change In OI
31-Dec-15	8200	CE	46.25	117726	4087725	636975
31-Dec-15	8300	CE	26.75	89071	4189350	602850
31-Dec-15	8100	CE	77.5	134384	3780000	529275
31-Dec-15	8000	CE	121.4	140331	4181100	477675
31-Dec-15	8500	CE	8.3	42544	4206875	470650
31-Dec-15	8400	CE	14.7	64777	1854475	295000
28-Jan-16	8600	CE	19.45	5330	690450	260700
31-Dec-15	7200	PE	7.75	25832	2433000	192150
28-Jan-16	8200	CE	105.6	5704	489300	173025
25-Feb-16	8000	PE	193.75	3055	162600	152100

NIFTY OPTIONS HIGHEST REDUCTION IN OPEN INTEREST						
Expiry	Strike	Option Type	Settlement Price	Volume	Open Interest	Change In OI
31-Dec-15	7900	CE	178.5	48202	1698325	-163725
31-Dec-15	7600	PE	28.1	44019	2222200	-103525
31-Dec-15	7800	CE	247.2	11685	1214600	-96900
31-Dec-15	7500	PE	19.3	45622	4734625	-56250
31-Dec-15	7700	CE	325.55	3738	561900	-40725
31-Dec-15	9000	CE	1.65	4390	3426925	-37500
31-Dec-15	7500	CE	501.7	1909	883775	-31750
31-Dec-15	7600	CE	411.4	1828	329475	-17850
31-Dec-15	6500	PE	1.65	358	605075	-11475
31-Dec-15	7200	CE	788	170	180075	-11400

Stock Option Open Interest Statistics

STOCK OPTIONS WITH HIGHEST ADDITION IN OPEN INTEREST							
Symbol	Expiry	Strike	Option Type	Settl. Price	Volume	Open Interest	Change in OI
UNITECH	31-Dec-15	7.5	PE	0.55	65	9779000	2156000
GMRINFRA	31-Dec-15	20	CE	0.2	213	13533000	1833000
UNITECH	31-Dec-15	7.5	CE	0.35	206	16247000	1694000
JPASSOCIAT	31-Dec-15	15	CE	0.3	127	5424000	1440000
RCOM	31-Dec-15	80	CE	3.5	1062	5448000	1384000
SOUTHBANK	31-Dec-15	25	CE	0.25	77	1210000	1078000
SOUTHBANK	31-Dec-15	22.5	CE	0.55	150	1452000	1012000
GMRINFRA	31-Dec-15	17.5	CE	0.55	457	22386000	975000
ASHOKLEY	31-Dec-15	110	CE	0.35	715	3367000	903000
IFCI	31-Dec-15	32.5	CE	0.45	402	4300000	740000

STOCK OPTIONS WITH HIGHEST REDUCTION IN OPEN INTEREST							
Symbol	Expiry	Strike	Option Type	Settl. Price	Volume	Open Int.	Change in OI
UNITECH	31-Dec-15	10	CE	0.05	56	9394000	-1078000
UNITECH	28-Jan-16	7.5	CE	0.65	12	693000	-462000
IFCI	31-Dec-15	27.5	CE	2.3	119	2840000	-360000
ASHOKLEY	31-Dec-15	95	PE	4	302	1582000	-357000
DLF	31-Dec-15	110	CE	11.1	305	790000	-275000
GMRINFRA	31-Dec-15	12.5	CE	4.05	16	2691000	-195000
RPOWER	31-Dec-15	50	CE	3.9	49	876000	-144000
IDBI	31-Dec-15	80	PE	0.6	114	912000	-120000
GMRINFRA	31-Dec-15	15	CE	1.9	28	6552000	-117000
DLF	31-Dec-15	120	CE	5.3	1632	3925000	-115000

Disclosure

- The Research Analysts and /or Ashika Stock Broking Limited do hereby certify that all the views expressed in this research report accurately reflect their views about the subject issuer(s) or securities. Moreover, they also certify the followings:-
- The Research Analyst or Ashika Stock Broking Limited or his/its Associates or his/its relative, has any financial interest in the subject company(ies) covered in this report. **No**
- The Research Analyst or Ashika Stock Broking Limited or his/its Associates or his/its relative, have actual/beneficial ownership of 1% or more in the subject company, at the end of the month immediately preceding the date of the publication of the research report. **No**
- The Research Analyst or Ashika Stock Broking Limited or his/its Associates or his/its relatives has any material conflict of interest at the time of publication of the research report. **No**
- The Research Analyst or Ashika Stock Broking Limited or his/its Associates have received compensation for investment banking or merchant banking or brokerage services or for product other than for investment banking or merchant banking or brokerage services from the companies covered in this report in the past 12 months. **No**
- The Research Analyst or Ashika Stock Broking Limited or his/its Associates have managed or co managed in the previous 12 months any private or public offering of securities for the company(ies) covered in this report. **No**
- The Research Analyst or Ashika Stock Broking Limited or his/its Associates have received any compensation or other benefits from the company(ies) covered in this report or any third party in connection with the Research Report. **No**
- The Research Analyst has served as an officer, director or employee of the company(ies) covered in the research report. **No**
- The Research Analyst or Ashika Stock Broking Limited has been engaged in Market making activity of the company(ies) covered in the research report. **No**

Disclaimer

This report is for the personal information of the authorized recipient and does not construe to be any investment, legal or taxation advice to you. Ashika Stock Broking Ltd. is not soliciting any action based upon it. This report is not for public distribution and has been furnished to you solely for your information and should not be reproduced or redistributed to any other person in any form. The report is based upon information that we consider reliable, but we do not represent that it is accurate or complete, and it should not be relied upon such. Ashika Stock Broking Ltd. or any of its affiliates or employees shall not be in anyway responsible for any loss or damage that may arise to any person from any inadvertent error in the information contained in this report. Ashika Stock Broking Ltd., or any of its affiliates or employees do not provide, at any time, any express or implied warranty of any kind, regarding any matter pertaining to this report, including without limitation the implied warranties of merchantability, fitness for a particular purpose, and non-infringement. The recipients of this report should rely on their own investigations.