

Technical Report

Closing Brief

Key benchmark indices closed lower after hovering in negative terrain for the most part of the trading session. Session was filled with volatility as key indices turned negative after opening on a firm note. The market breadth indicating the overall health of the market was positive.

Technical Build up

- ❖ Bearish engulfing candle with decrease in volume
- ❖ Buy crossover in oscillators.
- ❖ Upper band of Bollinger exist at 8055
- ❖ Crucial moving average of 20/50 SMA are at 7884 and 7994
- ❖ 200 SMA trend deciding level exist at 8299

Outlook for the day

Indian equity market ended marginally in red as disappointing PMI number and poor auto monthly sales pulled down the market. ECB meeting with expectation of stimulation package in Euro zone area is the next impetus for the market. On the technical front Nifty formed a bearish Engulfing candle indicating negative bias for the market. Fresh buying interest is only visible at the scale of 7937 which being the 'Inverted hammer' formation of the previous week. On the oscillator front, MACD has rolled bullish on daily chart. The rebound rally off Fibonacci retracement level of 7715 has more upside in the near-term followed by the rising trend line support at 7750. On the F&O front decrease in OI followed by decrease in price indicates of long liquidation in the market. continued to remain flat but is likely to move upwards on back of an eventful December. On the option front Call writing continues for the higher strike prices of 8000-8100 while put writing seen at 7500 strike prices however still call writers continue to outnumber put writers.

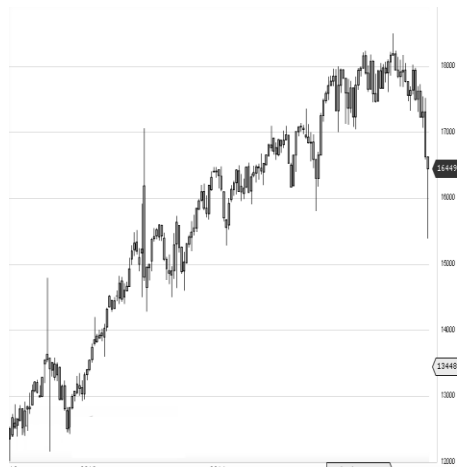
World Indices	LTP	Daily Ch(Pts)	Daily Ch(%)
Dow Jones	17729	-158	-0.89
Nasdaq	5123	-33	-0.64
S&P 500	2079	-23	-1.10
FTSE 100	6420	25	0.40
DAX	11190	-71	-0.63
Hang Seng	22371	-108	-0.48
Nikkei	19879	-58	-0.30
Sensex	26117	-51	-0.20
Nifty	7931	-23	-0.30

Commodity /Forex	LTP	Daily Ch(Pts)	Daily Ch(%)
Gold (\$/Oz)	1049.90	-3.90	-0.37
Silver (\$/Oz)	13.95	-0.06	-0.46
Copper(USD/lb.)	204.75	1.45	0.71
Brent Crude(USD/bbl)	42.76	0.27	0.64
USD/INR	66.60	0.11	0.17
USD/YEN	123.29	0.05	0.04
USD/EUR	1.0606	-0.0009	-0.08

Support/Resistance levels for Indian Equity Indices					
	S1	S2	CMP	R1	R2
Sensex	26010	25945	26117	26150	26265
Nifty	7900	7880	7931	7940	7975
Nifty (Fut)	7930	7910	7962	7970	8005

Pivot Level	
Sensex	26138
Nifty	7940

US: US market closed lower, with selling accelerating in late afternoon trade after oil broke below \$40 a barrel and there was more evidence of a weak manufacturing sector in the Fed's Beige Book. Technically DJIA is presently trading at the 5th leg through Elliot wave count with negative divergence in oscillators.



Increase in OI with Increase in Price (Long Buildup)					
Symbol	Prev OI	Curr OI	OI Chg (%)	Curr Pr.	Pr.Chg (%)
APOLLO					
HOSP	1582	1744	10.2	1390.0	2.80
SUNPHA					
RMA	31080	34077	9.6	735.35	0.20
GMRINF					
RA	6032	6603	9.5	18.0	8.4
BAJAJA					
UTO	8204	8845	7.8	2494.0	0.70
CROMP					
GREAV	4251	4579	7.7	197.60	1.40

Increase in OI with Decrease in Price (Short Buildup)					
Symbol	Prev OI	Curr OI	OI Chg (%)	Curr Pr.	Pr.Chg (%)
TATAMT					
RDVR	6707	7845	17	288.30	-1.2
BEML	664	766	15.4	1110.0	-2.2
NCC	1105	1248	12.9	77.70	-0.3
MOTHE					
RSUMI	5928	6603	11.4	284.55	-3.2
CANBK	5018	5445	8.5	264.40	-2.7

Nifty declined by 0.30% with Nifty future added 1.6 lakh shares in open interest and stock future added 464.1 lakh shares in open interest.

- Nifty PCR decreased to 0.84 from 0.86
- Total Nifty Calls added 27.4 lakh shares in open interest.
- Total Nifty Puts added 6.1 lakh shares in open interest.
- Maximum open interest (Nifty) in Calls for Oct. series is at 8000 and 7500 put.
- FII's bought net Rs.60.61 (provisional), while DIIs sold net Rs.78.31 Cr in cash market.
- FII bought net Rs.482.64 Cr. In F&O
- Securities in Ban Period: NIL

Nifty Tracker

PARTICULARS	02/12/2015	01/12/2015	30/11/2015	27/11/2015
Spot	7931.35	7954.9	7935.25	7942.7
% Change in Spot	-0.30%	0.25%	-0.09%	0.75%
Nifty(FUT) Dec	7962.9	7987.75	7980.1	7972.2
Nifty(FUT) Dec Vol.	100414	106700	108287	139963
Nifty(FUT) Dec - OI	19342200	19505850	19202025	18727050
Nifty(FUT) Jan	7999.25	8023.3	8015.7	8009.8
Nifty(FUT) Jan Vol.	2816	2328	1840	3889
Nifty(FUT) Jan - OI	815925	812550	785775	770250

Trade Statistics for 02/12/2015

PARTICULARS	NO. OF CONTRACTS	TURNOVER (RS. CR.)	PUT CALL RATIO
NSE Index Futures	1,99,297	11164	-
NSE Stock Futures	4,20,655	21966	-
NSE Index Options	14,65,918	86617	-
NSE Stock Options	1,75,792	9486	0.47
NSE F&O Total Turnover	22,61,662	129,233	0.86
NSE Cash Turnover	-	16124	-
BSE Cash Turnover	-	3,030.55	-
Total Turnover	-	148387	-

FII Corner (F&O)

FII NET BUYING/SELLING & CHANGE IN OPEN INTEREST (Cr. Rupee)						
PARTICULARS	02/12/2015		01/12/2015		30/11/2015	
	Net Buying /Selling	Change In Open interest	Net Buying /Selling	Change In Open interest	Net Buying /Selling	Change In Open interest
Index Future	-506	-46	-323	984	757	171
Index option	1149	1538	1304	4077	616	1911
Stock Future	-217	509	-204	1121	-262	1707
Stock option	57	222	11	257	107	358
Total	483	2223	788	6439	1218	4146

Market Open Interest

ADDITION/REDUCTION IN MARKET OPEN INTEREST					
Contracts	02/12/2015	01/12/2015	30/11/2015	27/11/2015	26/11/2015
Index Futures	-379	431	348	-7820	1798
Index Options	364	1186	2453	-11065	3189
Stock Futures	3025	4775	3580	-63181	13484
Stock Options	1007	1291	1511	-15493	1274
F&O Total	4017	7683	7892.27	-97559.36	19744.92

Nifty Option Open Interest Statistics

NIFTY OPTIONS HIGHEST ADDITION IN OPEN INTEREST						
Expiry	Strike	Option Type	Settlement Price	Volume	Open Interest	Change In OI
31-Dec-15	8000	CE	106.6	140467	4741925	560825
31-Dec-15	8100	CE	66.4	109638	4297500	517500
31-Dec-15	8200	CE	38.2	105000	4591350	503625
31-Dec-15	7600	PE	28.9	46400	2387950	165750
25-Feb-16	8000	PE	199.7	3357	325950	163350
28-Jan-16	8600	CE	16.85	3715	844125	153675
31-Dec-15	7900	CE	160.3	48771	1847725	149400
31-Dec-15	7700	PE	44.55	71939	2740800	148350
31-Dec-15	8500	CE	6.95	36490	4333350	126475
31-Dec-15	8300	CE	21.8	71508	4284375	95025

NIFTY OPTIONS HIGHEST REDUCTION IN OPEN INTEREST						
Expiry	Strike	Option Type	Settlement Price	Volume	Open Interest	Change In OI
31-Dec-15	7500	PE	18.85	55020	4612325	-122300
28-Jan-16	8000	PE	179.55	4059	1609650	-104250
31-Dec-15	7200	PE	7.3	19949	2360325	-72675
31-Dec-15	7800	PE	66.8	100084	2983475	-72000
31-Dec-15	7800	CE	225.85	9133	1152350	-62250
28-Jan-16	7500	CE	532.75	998	369525	-54375
31-Dec-15	8100	PE	201.2	9971	960225	-34125
28-Jan-16	7600	CE	449.1	456	168375	-28950
31-Dec-15	10000	CE	0.55	723	835725	-26250
31-Dec-15	8400	CE	12.05	38027	1835475	-19000

Stock Option Open Interest Statistics

STOCK OPTIONS WITH HIGHEST ADDITION IN OPEN INTEREST							
Symbol	Expiry	Strike	Option Type	Settl. Price	Volume	Open Interest	Change in OI
GMRINFRA	31-Dec-15	20	CE	0.4	926	16653000	3120000
GMRINFRA	31-Dec-15	15	PE	0.15	248	9243000	3042000
GMRINFRA	31-Dec-15	17.5	CE	1.2	1938	24999000	2613000
NHPC	31-Dec-15	22.5	CE	0.15	94	2727000	1350000
JPASSOCIAT	31-Dec-15	15	CE	0.3	133	6768000	1344000
JPASSOCIAT	31-Dec-15	10	PE	0.1	79	3264000	1152000
RCOM	31-Dec-15	80	CE	4	1112	6560000	1112000
GMRINFRA	31-Dec-15	22.5	CE	0.15	102	3081000	1092000
JPASSOCIAT	31-Dec-15	17.5	CE	0.1	22	3072000	960000
GMRINFRA	31-Dec-15	15	CE	3	160	7488000	936000

STOCK OPTIONS WITH HIGHEST REDUCTION IN OPEN INTEREST							
Symbol	Expiry	Strike	Option Type	Settl. Price	Volume	Open Int.	Change in OI
IFCI	31-Dec-15	25	PE	0.25	73	1540000	-620000
ASHOKLEY	31-Dec-15	95	PE	4.1	185	1295000	-287000
IFCI	31-Dec-15	27.5	CE	1.8	36	2640000	-200000
BANKBARODA	31-Dec-15	170	PE	4.2	294	709900	-195300
ASHOKLEY	31-Dec-15	100	PE	7.6	40	287000	-147000
INDIACEM	31-Dec-15	100	CE	0.85	147	822000	-132000
ICICIBANK	31-Dec-15	270	PE	7.55	533	674900	-129200
BANKBARODA	31-Dec-15	160	PE	1.6	165	579700	-105400
ADANIPOWER	31-Dec-15	32.5	CE	0.75	30	780000	-100000
SAIL	31-Dec-15	45	CE	3.5	23	216000	-81000

Disclosure

- The Research Analysts and /or Ashika Stock Broking Limited do hereby certify that all the views expressed in this research report accurately reflect their views about the subject issuer(s) or securities. Moreover, they also certify the followings:-
- The Research Analyst or Ashika Stock Broking Limited or his/its Associates or his/its relative, has any financial interest in the subject company(ies) covered in this report. **No**
- The Research Analyst or Ashika Stock Broking Limited or his/its Associates or his/its relative, have actual/beneficial ownership of 1% or more in the subject company, at the end of the month immediately preceding the date of the publication of the research report. **No**
- The Research Analyst or Ashika Stock Broking Limited or his/its Associates or his/its relatives has any material conflict of interest at the time of publication of the research report. **No**
- The Research Analyst or Ashika Stock Broking Limited or his/its Associates have received compensation for investment banking or merchant banking or brokerage services or for product other than for investment banking or merchant banking or brokerage services from the companies covered in this report in the past 12 months. **No**
- The Research Analyst or Ashika Stock Broking Limited or his/its Associates have managed or co managed in the previous 12 months any private or public offering of securities for the company(ies) covered in this report. **No**
- The Research Analyst or Ashika Stock Broking Limited or his/its Associates have received any compensation or other benefits from the company(ies) covered in this report or any third party in connection with the Research Report. **No**
- The Research Analyst has served as an officer, director or employee of the company(ies) covered in the research report. **No**
- The Research Analyst or Ashika Stock Broking Limited has been engaged in Market making activity of the company(ies) covered in the research report. **No**

Disclaimer

This report is for the personal information of the authorized recipient and does not construe to be any investment, legal or taxation advice to you. Ashika Stock Broking Ltd. is not soliciting any action based upon it. This report is not for public distribution and has been furnished to you solely for your information and should not be reproduced or redistributed to any other person in any form. The report is based upon information that we consider reliable, but we do not represent that it is accurate or complete, and it should not be relied upon such. Ashika Stock Broking Ltd. or any of its affiliates or employees shall not be in anyway responsible for any loss or damage that may arise to any person from any inadvertent error in the information contained in this report. Ashika Stock Broking Ltd., or any of its affiliates or employees do not provide, at any time, any express or implied warranty of any kind, regarding any matter pertaining to this report, including without limitation the implied warranties of merchantability, fitness for a particular purpose, and non-infringement. The recipients of this report should rely on their own investigations.