

# Technical Report

## Closing Brief

The Sensex provisionally closed below the psychological 26,000 mark. The barometer index alternately moved above and below that level in intraday trade after falling below that mark in morning trade. All the sectoral indices on BSE were in the red. The market breadth indicating the overall health of the market turned negative from positive in late trade.

## Technical Build up

- ❖ Bearish candle with increase in volume
- ❖ Sell crossover in oscillators.
- ❖ Upper band of Bollinger exist at 8026
- ❖ Crucial moving average of 20/50 SMA are at 7875 and 7995
- ❖ 200 SMA trend deciding level exist at 8295

## Outlook for the day

Indian equity market lost nearly a percent on Thursday and ended around the day's low following weak global trend, after the Fed Chairperson in her latest statement laid ground for rate hike in this month itself. On the technical front Nifty formed a bearish candle indicating negative bias for the market. Fresh buying interest is only visible at the scale of 7937 which being the 'inverted hammer' formation of the previous week. On the oscillator front, MACD has rolled bullish on daily chart. The rebound rally off Fibonacci retracement level of 7715 has more upside in the near-term followed by the rising trend line support at 7750. Trading range will be 7700-7950 in near term. On the F&O front marginal increase in OI followed by decrease in price indicates of short buildup followed by decrease in premium, Indian VIX too witnessed a mild pullback and is likely to move upwards on back of an eventful December. On the option front Call writing continues for the higher strike prices of 8200-8300 while the same was seen in lower strike prices of 7400 & 7500 as well indicating that though negative bias in the market might prevail but downside being be limited

World Indices	LTP	Daily Ch(Pts)	Daily Ch(%)
Dow Jones	17477	-252	-1.42
Nasdaq	5037	-85	-1.67
S&P 500	2049	-29	-1.44
FTSE 100	6275	-145	-2.27
DAX	10789	-400	-3.58
Hang Seng	22129	-287	-1.28
Nikkei	19589	-350	-1.76
Sensex	25886	-231	-0.89
Nifty	7864	-67	-0.85

Commodity /Forex	LTP	Daily Ch(Pts)	Daily Ch(%)
Gold (\$/Oz)	1061.7	0.50	0.05
Silver (\$/Oz)	14.08	-	0.02
Copper(USD/lb.)	204.60	-1.50	-0.73
Brent Crude(USD/bbl)	44.00	0.16	0.36
USD/INR	66.66	0.05	0.08
USD/YEN	122.71	0.10	0.08
USD/EUR	1.0912	-0.0028	-0.26

Support/Resistance levels for Indian Equity Indices					
	S1	S2	CMP	R1	R2
Sensex	25740	25575	25886	25975	26070
Nifty	7820	7770	7864	7890	7920
Nifty (Fut)	7845	7795	7890	7915	7945

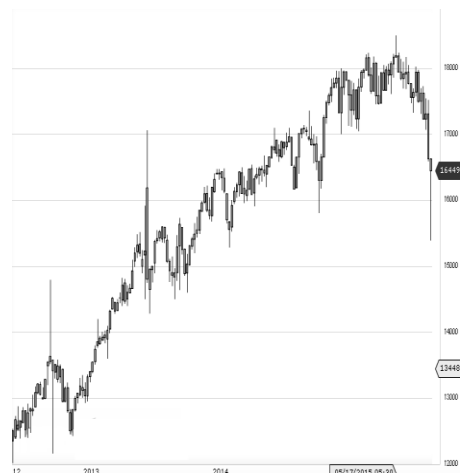
Pivot Level	
Sensex	25955
Nifty	7876

**US:** US market closed sharply lower Thursday as yields climbed and traders were worried the Fed would raise rates while the economy is too weak. Technically DJIA is presently trading at the 5th leg through Elliot wave count with negative divergence in oscillators.



Increase in OI with Increase in Price (Long Buildup)					
Symbol	Prev OI	Curr OI	OI Chg (%)	Curr Pr.	Pr.Chg (%)
HAVELL S	2609	5168	98.1	302.7	4.10
RELINFR A	5014	5638	12.5	460.35	2.60
OIL	4146	4611	11.2	387.9	0.20
RCOM	9264	9946	7.4	83.95	6.40
NCC	1244	1331	7	78.10	0.50

Increase in OI with Decrease in Price (Short Buildup)					
Symbol	Prev OI	Curr OI	OI Chg (%)	Curr Pr.	Pr.Chg (%)
APOLLO TYRE	3920	4325	10.3	158.8	-3.8
ADANIP ORTS	22853	24591	7.6	259.30	-1.5
NMDC	3208	3445	7.4	90.3	-3.2
BANKIN DIA	5741	6156	7.2	125.55	-1.9
WIPRO	7092	7605	7.2	575.95	-0.6



# Derivative Report

Technical &amp; Derivative Report

Nifty declined by 0.85% with Nifty future added 0.8 lakh shares in open interest and stock future added 249.9 lakh shares in open interest.

- Nifty PCR decreased to 0.78 from 0.84
- Total Nifty Calls added 59.5 lakh shares in open interest.
- Total Nifty Puts added 15.3 lakh shares in open interest.
- Maximum open interest (Nifty) in Calls for Oct. series is at 8200 and 7500 put.
- FII's sold net Rs.611.43(provisional), while DIIs bought net Rs.521.11 Cr in cash market.
- FII bought net Rs.103.90 Cr. In F&O
- Securities in Ban Period: NIL

## Nifty Tracker

PARTICULARS	03/12/2015	02/12/2015	01/12/2015	30/11/2015
Spot	7864.15	7931.35	7954.9	7935.25
% Change in Spot	-0.85%	-0.30%	0.25%	-0.09%
Nifty(FUT) Dec	7890.8	7962.9	7987.75	7980.1
Nifty(FUT) Dec Vol.	125397	100414	106700	108287
Nifty(FUT) Dec - OI	19372950	19342200	19505850	19202025
Nifty(FUT) Jan	7929.45	7999.25	8023.3	8015.7
Nifty(FUT) Jan Vol.	3870	2816	2328	1840
Nifty(FUT) Jan - OI	862125	815925	812550	785775

## Trade Statistics for 03/12/2015

PARTICULARS	NO. OF CONTRACTS	TURNOVER (RS. CR.)	PUT CALL RATIO
NSE Index Futures	2,06,979	11694	-
NSE Stock Futures	4,37,019	22909	-
NSE Index Options	16,58,774	98663	-
NSE Stock Options	1,86,576	10206	0.48
NSE F&O Total Turnover	24,89,348	143,472	0.66
NSE Cash Turnover	-	15980	-
BSE Cash Turnover	-	3096.3	-
Total Turnover	-	162548	-

## FII Corner (F&O)

FII NET BUYING/SELLING & CHANGE IN OPEN INTEREST (Cr. Rupee)						
PARTICULARS	03/12/2015		02/12/2015		01/12/2015	
	Net Buying /Selling	Change In Open interest	Net Buying /Selling	Change In Open interest	Net Buying /Selling	Change In Open interest
Index Future	-509	-284	-506	-46	-323	984
Index option	816	3734	1149	1538	1304	4077
Stock Future	-222	-191	-217	509	-204	1121
Stock option	19	159	57	222	11	257
Total	104	3419	483	2223	788	6439

## Market Open Interest

ADDITION/REDUCTION IN MARKET OPEN INTEREST					
Contracts	03/12/2015	02/12/2015	01/12/2015	30/11/2015	27/11/2015
Index Futures	50	-379	431	348	-7820
Index Options	-125	364	1186	2453	-11065
Stock Futures	6371	3025	4775	3580	-63181
Stock Options	896	1007	1291	1511	-15493
F&O Total	7192	4017	7683.13	7892.27	-97559.36

## Nifty Option Open Interest Statistics

NIFTY OPTIONS HIGHEST ADDITION IN OPEN INTEREST						
Expiry	Strike	Option Type	Settlement Price	Volume	Open Interest	Change In OI
31-Dec-15	8200	CE	26.75	147179	6424650	1833300
31-Dec-15	8300	CE	15.6	114899	5415525	1131150
31-Dec-15	8100	CE	47.35	151067	5424225	1126725
31-Dec-15	8000	CE	78.5	174575	5222825	480900
31-Dec-15	7900	CE	121.75	83051	2278900	431175
31-Dec-15	7800	CE	176.9	18667	1322225	169875
31-Dec-15	8600	CE	3.35	22374	1498775	132075
31-Dec-15	8500	CE	5.4	38242	4413575	80225
31-Dec-15	8400	CE	8.85	56893	1909450	73975
31-Dec-15	8800	CE	1.85	3598	483400	56175

NIFTY OPTIONS HIGHEST REDUCTION IN OPEN INTEREST						
Expiry	Strike	Option Type	Settlement Price	Volume	Open Interest	Change In OI
28-Jan-16	7500	CE	472.1	1009	339600	-29925
31-Dec-15	7200	CE	692.7	734	153375	-25500
28-Jan-16	7400	CE	560.7	367	288075	-24825
28-Jan-16	7600	CE	398.05	445	149175	-19200
28-Jan-16	8100	CE	108.35	1657	255300	-13275
31-Dec-15	10000	CE	0.5	365	825900	-9825
31-Dec-15	7300	CE	595.55	347	98075	-7575
28-Jan-16	7700	CE	321.4	219	268425	-7500
28-Jan-16	7300	CE	654.7	101	70275	-6000
28-Jan-16	8300	CE	53.1	1989	471825	-5400

## Stock Option Open Interest Statistics

STOCK OPTIONS WITH HIGHEST ADDITION IN OPEN INTEREST							
Symbol	Expiry	Strike	Option Type	Settl. Price	Volume	Open Interest	Change in OI
GMRINFRA	31-Dec-15	20	CE	0.45	1320	24102000	7449000
GMRINFRA	31-Dec-15	22.5	CE	0.15	272	7215000	4134000
UNITECH	31-Dec-15	10	CE	0.05	88	13090000	3234000
UNITECH	31-Dec-15	7.5	CE	0.3	73	19866000	3080000
GMRINFRA	31-Dec-15	17.5	PE	0.7	217	5109000	3003000
JPASSOCIAT	31-Dec-15	15	CE	0.25	165	9648000	2880000
RCOM	31-Dec-15	80	PE	2.8	1193	2000000	1680000
UCOBANK	31-Dec-15	40	PE	0.65	269	1490000	1490000
RCOM	31-Dec-15	85	CE	4.2	3055	6232000	1240000
RCOM	31-Dec-15	85	PE	5.05	386	1400000	1232000

STOCK OPTIONS WITH HIGHEST REDUCTION IN OPEN INTEREST							
Symbol	Expiry	Strike	Option Type	Settl. Price	Volume	Open Int.	Change in OI
GMRINFRA	31-Dec-15	17.5	CE	1.4	1065	18720000	-6279000
RCOM	31-Dec-15	80	CE	6.85	1742	4456000	-2104000
SAIL	31-Dec-15	37.5	PE	0.05	110	612000	-864000
GMRINFRA	31-Dec-15	15	CE	3.5	41	6864000	-624000
RCOM	31-Dec-15	75	CE	10.15	249	1656000	-472000
TV18BRDCST	31-Dec-15	37.5	CE	2.65	250	612000	-289000
IDFC	31-Dec-15	50	CE	2.8	160	211200	-280500
TATASTEEL	31-Dec-15	240	PE	8.5	1068	656000	-264000
RCOM	31-Dec-15	82.5	CE	5.4	420	736000	-216000
RCOM	31-Dec-15	77.5	CE	8.8	170	400000	-208000

**Disclosure**

- The Research Analysts and /or Ashika Stock Broking Limited do hereby certify that all the views expressed in this research report accurately reflect their views about the subject issuer(s) or securities. Moreover, they also certify the followings:-
- The Research Analyst or Ashika Stock Broking Limited or his/its Associates or his/its relative, has any financial interest in the subject company(ies) covered in this report. **No**
- The Research Analyst or Ashika Stock Broking Limited or his/its Associates or his/its relative, have actual/beneficial ownership of 1% or more in the subject company, at the end of the month immediately preceding the date of the publication of the research report. **No**
- The Research Analyst or Ashika Stock Broking Limited or his/its Associates or his/its relatives has any material conflict of interest at the time of publication of the research report. **No**
- The Research Analyst or Ashika Stock Broking Limited or his/its Associates have received compensation for investment banking or merchant banking or brokerage services or for product other than for investment banking or merchant banking or brokerage services from the companies covered in this report in the past 12 months. **No**
- The Research Analyst or Ashika Stock Broking Limited or his/its Associates have managed or co managed in the previous 12 months any private or public offering of securities for the company(ies) covered in this report. **No**
- The Research Analyst or Ashika Stock Broking Limited or his/its Associates have received any compensation or other benefits from the company(ies) covered in this report or any third party in connection with the Research Report. **No**
- The Research Analyst has served as an officer, director or employee of the company(ies) covered in the research report. **No**
- The Research Analyst or Ashika Stock Broking Limited has been engaged in Market making activity of the company(ies) covered in the research report. **No**

**Disclaimer**

This report is for the personal information of the authorized recipient and does not construe to be any investment, legal or taxation advice to you. Ashika Stock Broking Ltd. is not soliciting any action based upon it. This report is not for public distribution and has been furnished to you solely for your information and should not be reproduced or redistributed to any other person in any form. The report is based upon information that we consider reliable, but we do not represent that it is accurate or complete, and it should not be relied upon such. Ashika Stock Broking Ltd. or any of its affiliates or employees shall not be in anyway responsible for any loss or damage that may arise to any person from any inadvertent error in the information contained in this report. Ashika Stock Broking Ltd., or any of its affiliates or employees do not provide, at any time, any express or implied warranty of any kind, regarding any matter pertaining to this report, including without limitation the implied warranties of merchantability, fitness for a particular purpose, and non-infringement. The recipients of this report should rely on their own investigations.