

# Technical Report

## Closing Brief

Key benchmark indices declined on first trading day of the week in what was a volatile session of trade. The market breadth indicating the overall health of the market was positive.

## Technical Build up

- ❖ Bearish candle with decrease in volume
- ❖ Sell crossover in oscillators.
- ❖ Lower band of Bollinger exist at 7718
- ❖ Crucial moving average of 20/50 SMA are at 7852 and 7988
- ❖ 200 SMA trend deciding level exist at 8286

## Outlook for the day

Indian equity market ended marginally in red on concern over passing of GST Bill and expectation of US Fed hike in interest rate. On the technical front Nifty formed yet another bearish candle indicating negative bias for the market. Fresh buying interest is only visible at the scale of 7937 which being the 'Inverted hammer' formation of the previous week. Now Nifty saw a breakdown from the pennant formation & has closed lower for the fourth day running. This reconfirms the overall direction. The 'Inverted Hammer Pattern' confirmed in the previous week would get negated in the current scenario and hence immediate correction towards 7600 cannot be ruled out. However immediate support for the market stands around 7700 from the rising trend line support. Positive possibilities could sustain if Index strengthens and sustains above 20dma which for Nifty stands at 7907. Trading range will be 7700-7950 in near term. On the F&O front increase in OI followed by decrease in price indicates of short buildup though premium has been increasing. Indian VIX decreased marginally though pullback is likely to move upwards on back of an eventful December. On the option front put writers had been adding position in 7400 & 7500 while call writers seems to concentrating on 7900 & 8100. Unwinding of short position in 7700 & 8100 strike price put option were also noticed. Hence to sum up overall biasness continues to remain negative.

World Indices	LTP	Daily Ch(Pts)	Daily Ch(%)
Dow Jones	17730	-117	-0.66
Nasdaq	5101	-40	-0.79
S&P 500	2077	-14	-0.70
FTSE 100	6223	-14	-0.24
DAX	10886	133	1.25
Hang Seng	21880	-322	-1.45
Nikkei	19524	-173	-0.88
Sensex	25530	-108	-0.42
Nifty	7765	-16	-0.21

Commodity /Forex	LTP	Daily Ch(Pts)	Daily Ch(%)
Gold (\$/Oz)	1070.20	-5.00	-0.47
Silver (\$/Oz)	14.25	-0.09	-0.61
Copper(USD/lb.)	204.60	-0.50	-0.24
Brent Crude(USD/bbl)	40.89	0.16	0.39
USD/INR	66.73	0.04	0.07
USD/YEN	123.24	-0.13	-0.11
USD/EUR	1.0840	0.0003	0.03

Support/Resistance levels for Indian Equity Indices					
	S1	S2	CMP	R1	R2
Sensex	25315	25150	25530	25680	25845
Nifty	7700	7650	7765	7810	7860
Nifty (Fut)	7745	7695	7808	7855	7905

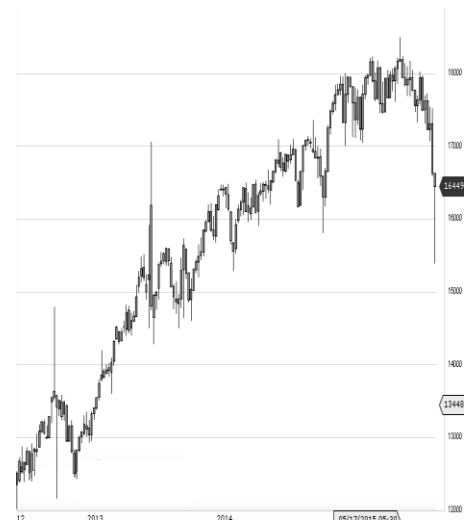
Pivot Level	
Sensex	25597
Nifty	7778

**US:** US market closed lower Monday, weighed by a sharp decline in energy as oil plunged to a near-seven-year low. Technically DJIA is presently trading at the 5th leg through Elliot wave count with negative divergence in oscillators.



Increase in OI with Increase in Price (Long Buildup)					
Symbol	Prev OI	Curr OI	OI Chg (%)	Curr Pr.	Pr.Chg (%)
ASIANP					
AINT	5411	5845	8	875.00	4.20
VOLTAS	3530	3795	7.5	294.65	3.80
M&MFI					
N	5423	5828	7.5	247.50	2.30
MARICO	1062	1140	7.3	427.65	0.40
JUSTDIA					
L	3836	4111	7.2	845.0	2.90

Increase in OI with Decrease in Price (Short Buildup)					
Symbol	Prev OI	Curr OI	OI Chg (%)	Curr Pr.	Pr.Chg (%)
ITC	15966	19737	23.6	315.4	-6.6
OIL	3930	4439	13	389.25	-1.9
IGL	1139	1226	7.6	467.6	-1.7
COALIN					
DIA	10548	11144	5.7	329.35	-2.1
UBL	1710	1805	5.6	928.6	-1.2ASIA



Nifty declined by 0.21% with Nifty future shaded 1.5 lakh shares in open interest and stock future added 80.4 lakh shares in open interest.

- Nifty PCR decreased to 0.77 from 0.78
- Total Nifty Calls added 25.3 lakh shares in open interest.
- Total Nifty Puts added 5.8 lakh shares in open interest.
- Maximum open interest (Nifty) in Calls for Oct. series is at 8000 and 7500 put.
- FII's sold net Rs.65.04(provisional), while DIIs sold net Rs.54.9 Cr in cash market.
- FII sold net Rs.663.20 Cr. In F&O
- Securities in Ban Period: NIL

## Nifty Tracker

PARTICULARS	07/12/2015	04/12/2015	03/12/2015	02/12/2015
Spot	7765.4	7781.9	7864.15	7931.35
% Change in Spot	-0.21%	-1.05%	-0.85%	-0.30%
Nifty(FUT) Dec	7808.8	7820.5	7890.8	7962.9
Nifty(FUT) Dec Vol.	95802	119210	125397	100414
Nifty(FUT) Dec - OI	19354950	19555500	19372950	19342200
Nifty(FUT) Jan	7847.2	7856.25	7929.45	7999.25
Nifty(FUT) Jan Vol.	3882	4296	3870	2816
Nifty(FUT) Jan - OI	974325	922050	862125	815925

## Trade Statistics for 07/12/2015

PARTICULARS	NO. OF CONTRACTS	TURNOVER (RS. CR.)	PUT CALL RATIO
NSE Index Futures	1,52,123	8530	-
NSE Stock Futures	3,51,590	18009	-
NSE Index Options	14,68,931	86597	-
NSE Stock Options	1,90,590	10085	0.52
NSE F&O Total Turnover	21,63,234	123,222	0.68
NSE Cash Turnover	-	13898	-
BSE Cash Turnover	-	2663.22	-
Total Turnover	-	139783	-

## FII Corner (F&O)

FII NET BUYING/SELLING & CHANGE IN OPEN INTEREST (Cr. Rupee)						
PARTICULARS	07/12/2015		04/12/2015		03/12/2015	
	Net Buying /Selling	Change In Open interest	Net Buying /Selling	Change In Open interest	Net Buying /Selling	Change In Open interest
Index Future	35	-433	-966	-434	-509	-284
Index option	-640	999	374	859	816	3734
Stock Future	-41	-283	-325	-149	-222	-191
Stock option	-18	158	48	216	19	159
Total	-664	442	-869	492	104	3419

## Market Open Interest

ADDITION/REDUCTION IN MARKET OPEN INTEREST					
Contracts	07/12/2015	04/12/2015	03/12/2015	02/12/2015	01/12/2015
Index Futures	-155	305	50	-379	431
Index Options	17	267	-125	364	1186
Stock Futures	2614	2199	6371	3025	4775
Stock Options	868	979	896	1007	1291
F&O Total	3344	3751	7192.46	4017	7683.13

## Nifty Option Open Interest Statistics

NIFTY OPTIONS HIGHEST ADDITION IN OPEN INTEREST						
Expiry	Strike	Option Type	Settlement Price	Volume	Open Interest	Change In OI
31-Dec-15	8000	CE	43.15	164394	6074850	502675
31-Dec-15	7900	CE	74.65	154532	3164550	491825
31-Dec-15	7800	CE	120.15	71056	2093300	320325
31-Dec-15	8500	CE	3.1	30303	4729950	308025
31-Dec-15	7400	PE	17.8	36930	3121700	186225
31-Dec-15	8100	CE	23.55	105861	5629050	180750
31-Dec-15	7500	PE	29.2	61568	5328625	169325
25-Feb-16	8000	PE	269.5	3077	678525	137925
31-Dec-15	7600	PE	46.7	74565	3015275	135650
31-Dec-15	7100	PE	6.3	11181	1660875	106475

NIFTY OPTIONS HIGHEST REDUCTION IN OPEN INTEREST						
Expiry	Strike	Option Type	Settlement Price	Volume	Open Interest	Change In OI
31-Dec-15	7700	PE	73	106343	2991600	-313700
31-Dec-15	8100	PE	309.9	4461	709775	-113725
31-Dec-15	8200	CE	12.7	87705	6019650	-96450
31-Dec-15	8600	CE	2.15	7258	1390700	-89850
28-Jan-16	8000	PE	258.25	2900	1382775	-83925
31-Dec-15	8000	PE	232.05	14703	4334150	-74075
31-Dec-15	7100	CE	708.3	894	337500	-49050
31-Dec-15	8300	CE	7.6	44474	5001100	-46175
28-Jan-16	7700	PE	118.4	3889	476025	-39225
28-Jan-16	7400	CE	487.5	702	201675	-30900

## Stock Option Open Interest Statistics

STOCK OPTIONS WITH HIGHEST ADDITION IN OPEN INTEREST							
Symbol	Expiry	Strike	Option Type	Settl. Price	Volume	Open Interest	Change in OI
GMRINFRA	31-Dec-15	17.5	CE	0.45	1780	29445000	2145000
GMRINFRA	31-Dec-15	22.5	CE	0.05	164	11817000	1794000
GMRINFRA	31-Dec-15	15	PE	0.4	684	14937000	1599000
JPASSOCIAT	31-Dec-15	12.5	PE	0.55	73	7200000	1440000
ITC	31-Dec-15	330	CE	3.65	2419	1446400	1414400
TATASTEEL	31-Dec-15	250	CE	6.8	2166	2632000	1076000
INDIACEM	31-Dec-15	85	CE	4.1	319	1380000	1062000
GMRINFRA	31-Dec-15	12.5	PE	0.1	243	7410000	1053000
ITC	31-Dec-15	320	CE	7	1794	1019200	1001600
RCOM	31-Dec-15	75	PE	1.5	909	4592000	904000

STOCK OPTIONS WITH HIGHEST REDUCTION IN OPEN INTEREST							
Symbol	Expiry	Strike	Option Type	Settl. Price	Volume	Open Int.	Change in OI
GMRINFRA	31-Dec-15	15	CE	1.65	482	8190000	-1131000
JPASSOCIAT	31-Dec-15	17.5	CE	0.05	58	3552000	-672000
RCOM	31-Dec-15	82.5	CE	3.5	437	984000	-344000
GMRINFRA	31-Dec-15	17.5	PE	1.6	106	4602000	-312000
JINDALSTEL	31-Dec-15	92.5	CE	5.4	58	280000	-266000
SUNPHARMA	31-Dec-15	760	CE	32.45	1349	307200	-251400
INDIACEM	31-Dec-15	90	CE	2.05	418	1680000	-246000
UCOBANK	31-Dec-15	40	PE	0.45	33	1360000	-210000
RELCAPITAL	31-Dec-15	440	CE	12.4	537	450000	-189000
IDBI	31-Dec-15	102.5	CE	0.85	94	2136000	-176000

**Disclosure**

- The Research Analysts and /or Ashika Stock Broking Limited do hereby certify that all the views expressed in this research report accurately reflect their views about the subject issuer(s) or securities. Moreover, they also certify the followings:-
- The Research Analyst or Ashika Stock Broking Limited or his/its Associates or his/its relative, has any financial interest in the subject company(ies) covered in this report. **No**
- The Research Analyst or Ashika Stock Broking Limited or his/its Associates or his/its relative, have actual/beneficial ownership of 1% or more in the subject company, at the end of the month immediately preceding the date of the publication of the research report. **No**
- The Research Analyst or Ashika Stock Broking Limited or his/its Associates or his/its relatives has any material conflict of interest at the time of publication of the research report. **No**
- The Research Analyst or Ashika Stock Broking Limited or his/its Associates have received compensation for investment banking or merchant banking or brokerage services or for product other than for investment banking or merchant banking or brokerage services from the companies covered in this report in the past 12 months. **No**
- The Research Analyst or Ashika Stock Broking Limited or his/its Associates have managed or co managed in the previous 12 months any private or public offering of securities for the company(ies) covered in this report. **No**
- The Research Analyst or Ashika Stock Broking Limited or his/its Associates have received any compensation or other benefits from the company(ies) covered in this report or any third party in connection with the Research Report. **No**
- The Research Analyst has served as an officer, director or employee of the company(ies) covered in the research report. **No**
- The Research Analyst or Ashika Stock Broking Limited has been engaged in Market making activity of the company(ies) covered in the research report. **No**

**Disclaimer**

This report is for the personal information of the authorized recipient and does not construe to be any investment, legal or taxation advice to you. Ashika Stock Broking Ltd. is not soliciting any action based upon it. This report is not for public distribution and has been furnished to you solely for your information and should not be reproduced or redistributed to any other person in any form. The report is based upon information that we consider reliable, but we do not represent that it is accurate or complete, and it should not be relied upon such. Ashika Stock Broking Ltd. or any of its affiliates or employees shall not be in anyway responsible for any loss or damage that may arise to any person from any inadvertent error in the information contained in this report. Ashika Stock Broking Ltd., or any of its affiliates or employees do not provide, at any time, any express or implied warranty of any kind, regarding any matter pertaining to this report, including without limitation the implied warranties of merchantability, fitness for a particular purpose, and non-infringement. The recipients of this report should rely on their own investigations.