

Technical Report

Closing Brief

Key benchmark indices logged modest gains. A bout of volatility was witnessed towards the fag end of the trading session as the Sensex fell below the psychological 26,000 mark soon after surpassing that level. Volatility at the fag end of the trading session materialized as the near month November 2015 contracts expired in the futures & options (F&O) segment.

Technical Build up

- ❖ Bullish candle with increase in volume
- ❖ Buy crossover in oscillators.
- ❖ Upper band of Bollinger exist at 8164
- ❖ Crucial moving average of 20/50 SMA are at 7917 and 7985
- ❖ 200 SMA trend deciding level exist at 8313

Outlook for the day

Indian equity market gain over half a percent amid volatility on F&O expiry day. The Index inched higher in hope that the GST Bill will be passed in the Winter session of Parliament. On the technical front movement in the Nifty was narrow and the index remained within its previous week's price range. Since there is no major change in the weekly chart structure, emphasis should continued to hold strong for 'Inverted Hammer' pattern formed last week. The pattern would get activated once the high of 7937 is scaled and if it does so then Nifty can head higher till 8100. Yesterday's bullish candlestick pattern signifies that fresh buying interest had been developing in the market, the rebound rally off Fibonacci retracement level of 7715 has more upside in the near-term. Nifty has immediate support around 7815-7825 levels and next support is at 7750-7760 immediate resistance is around 7880-7890 and next resistance is at 7930-7940. On the F&O front Rollovers on Nifty were better than 3M average. On the other hand the stock futures rollovers were in line with the 3-months average. On the option front writing was seen in 8100 and higher calls along with 7600 and lower strike puts.

World Indices	LTP	Daily Ch(Pts)	Daily Ch(%)
Dow Jones	17813	1	0.01
Nasdaq	5116	13	0.26
S&P 500	2088	-	-0.01
FTSE 100	6393	55	0.88
DAX	11320	151	1.35
Hang Seng	22346	-141	-0.63
Nikkei	19851	-92	-0.46
Sensex	25958	182	0.71
Nifty	7883	52	0.67

Commodity /Forex	LTP	Daily Ch(Pts)	Daily Ch(%)
Gold (\$/Oz)	1071.20	1.50	0.14
Silver (\$/Oz)	14.27	0.09	0.63
Copper(USD/lb.)	210.70	5.80	2.83
Brent			
Crude(USD/bbl)	45.57	0.11	0.24
USD/INR	66.56	0.24	0.36
USD/YEN	122.62	0.05	0.04
USD/EUR	1.0604	-0.0006	-0.06

Support/Resistance levels for Indian Equity Indices					
	S1	S2	CMP	R1	R2
Sensex	25780	25680	25958	26080	26245
Nifty	7830	7800	7883	7920	7970
Nifty (Fut)	7875	7845	7929	7965	8015

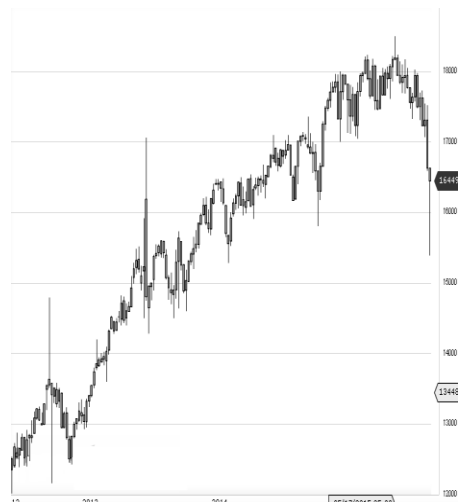
Pivot Level	
Sensex	25914
Nifty	7909

US: US market was closed due to Thanks giving day. Technically DJIA is presently trading at the 5th leg through Elliot wave count with negative divergence in oscillators.



Increase in OI with Increase in Price (Long Buildup)					
Symbol	Prev OI	Curr OI	OI Chg (%)	Curr Pr.	Pr.Ch g (%)
JISJALE					
QS	1	10	900	68.0	1.80
EXIDEIN					
D	1	10	900	148.55	0.60
ADANIP					
OWER	8	37	362.5	31.0	4.9
ASIANP					
AINT	4	14	250	872.95	1.40
RELCAP					
TAL	5	15	200	436.50	3.20

Increase in OI with Decrease in Price (Short Buildup)					
Symbol	Prev OI	Curr OI	OI Chg (%)	Curr Pr.	Pr.Chg (%)
CIPLA	1	17	1600	642	-1.0
ORIENT					
BANK	5	21	320	146	-2.3
SYNDIB					
ANK	2	7	250	91	-2.1
ANDHR					
ABANK	8	28	250	67.1	-2.0
GLENM					
ARK	8	27	237.5	966.65	-1.2



Nifty gained by 0.67% on the last day of November expiry. Nifty declined by 2.81% in Nov. expiry against a gain of 3.10% in Oct.(expiry to expiry). Nifty started the month with 284 lakh shares in open interest and stock future with 325 lakh shares in open interest.

- Nifty PCR is at 1.53 against 0.97 on the first day of Dec expiry.
- Total Nifty Calls started with 506 lakh shares in open interest against 349 lakh shares in last month.
- Total Nifty Puts started with 779 lakh shares in open interest against 341 lakh shares in last month.
- Maximum open interest (Nifty) in Calls for Nov. series is at 7900 and 7800 put.
- FII's sold net Rs.398.1(provisional), while DIIs bought net Rs.948.98 Cr in cash market.
- FII bought net Rs.281.26 Cr. In F&O
- Securities in Ban Period: NIL

Nifty Tracker

PARTICULARS	26/11/2015	24/11/2015	23/11/2015	20/11/2015
Spot	7883.8	7831.6	7849.25	7856.55
% Change in Spot	0.67%	-0.22%	-0.09%	0.18%
Nifty(FUT) Dec	7929.05	7864.75	7885.45	7889
Nifty(FUT) Dec Vol.	122834	86128	86509	36308
Nifty(FUT) Dec - OI	18777900	14067375	10550250	5987100
Nifty(FUT) Jan	7965.35	0	0	0
Nifty(FUT) Jan Vol.	3366	0	0	0
Nifty(FUT) Jan - OI	689925	0	0	0

Trade Statistics for 26/11/2015

PARTICULARS	NO. OF CONTRACTS	TURNOVER (RS. CR.)	PUT CALL RATIO
NSE Index Futures	4,25,990	24133	-
NSE Stock Futures	15,41,282	77138	-
NSE Index Options	64,71,453	3,75,925.17	-
NSE Stock Options	4,17,315	21664	0.59
NSE F&O Total Turnover	88,56,040	498,860	1.02
NSE Cash Turnover	-	22616	-
BSE Cash Turnover	-	2,854.66	-
Total Turnover	-	524331	-

FII Corner (F&O)

FII NET BUYING/SELLING & CHANGE IN OPEN INTEREST (Cr. Rupee)						
PARTICULARS	26/11/2015		24/11/2015		23/11/2015	
	Net Buying /Selling	Change In Open interest	Net Buying /Selling	Change In Open interest	Net Buying /Selling	Change In Open interest
Index Future	-307	-9518	-141	2146	403	4171
Index option	1278	-28962	26	-302	-675	108
Stock Future	-745	-7903	381	1521	289	2164
Stock option	55	-3663	47	-270	-95	48
Total	281	-50046	313	3095	-78	6491

Market Open Interest

ADDITION/REDUCTION IN MARKET OPEN INTEREST					
Contracts	26/11/2015	24/11/2015	23/11/2015	20/11/2015	19/11/2015
Index Futures	1798	1180	2237	263	-558
Index Options	3189	627	1931	1335	1547
Stock Futures	13484	317	3425	-650	313
Stock Options	1274	-263	338	68	111
F&O Total	19745	1861	7930.52	1016.35	1412.86

Nifty Option Open Interest Statistics

NIFTY OPTIONS HIGHEST ADDITION IN OPEN INTEREST						
Expiry	Strike	Option Type	Settlement Price	Volume	Open Interest	Change In OI
31-Dec-15	8300	CE	29.2	46128	2809700	836625
31-Dec-15	8100	CE	75.85	52949	2616150	789375
31-Dec-15	7400	PE	23.4	33564	1724225	736650
31-Dec-15	8200	CE	48.25	60206	3143775	571875
31-Dec-15	7800	PE	96.85	40211	2281425	557850
31-Dec-15	7900	CE	161.4	39244	1713175	513450
31-Dec-15	8000	CE	113.7	54535	3000325	505650
31-Dec-15	7900	PE	133	34953	2015450	497425
31-Dec-15	7600	PE	48.8	31959	1692225	435725
31-Dec-15	8400	CE	16.8	23393	1309450	366925

NIFTY OPTIONS HIGHEST REDUCTION IN OPEN INTEREST						
Expiry	Strike	Option Type	Settlement Price	Volume	Open Interest	Change In OI
31-Dec-15	9500	CE	0.85	3390	1082025	-44500
31-Dec-15	7700	CE	292.7	7003	705300	-44100
31-Dec-15	7200	CE	728.45	507	194925	-7275
31-Dec-15	7200	PE	11.4	10537	1348800	-5850
31-Dec-15	6500	PE	2	1123	614075	-525
31-Dec-15	11000	PE	3044.25	14	8750	-75

Stock Option Open Interest Statistics

STOCK OPTIONS WITH HIGHEST ADDITION IN OPEN INTEREST							
Symbol	Expiry	Strike	Option Type	Settl. Price	Volume	Open Interest	Change in OI
GMRINFRA	31-Dec-15	17.5	CE	0.45	388	11232000	6825000
GMRINFRA	31-Dec-15	20	CE	0.15	122	5070000	3549000
UNITECH	31-Dec-15	7.5	CE	0.5	45	6006000	1848000
DLF	31-Dec-15	120	CE	4.15	1038	2055000	1800000
UNITECH	31-Dec-15	10	CE	0.1	60	6160000	1694000
UNITECH	31-Dec-15	7.5	PE	0.8	25	4697000	1463000
JPASSOCIAT	31-Dec-15	15	CE	0.3	40	2496000	1440000
GMRINFRA	31-Dec-15	15	CE	1.55	145	5109000	1365000
RCOM	31-Dec-15	80	CE	2.9	433	2256000	1360000
RPOWER	31-Dec-15	55	CE	1.75	231	1716000	1344000

STOCK OPTIONS WITH HIGHEST REDUCTION IN OPEN INTEREST							
Symbol	Expiry	Strike	Option Type	Settl. Price	Volume	Open Int.	Change in OI
UNITECH	31-Dec-15	5	PE	0.1	2	308000	-77000
ZEEL	31-Dec-15	390	PE	6.95	110	32500	-66300
IFCI	31-Dec-15	22.5	PE	0.2	5	120000	-40000
RCOM	31-Dec-15	65	CE	10.7	24	128000	-40000
SBIN	31-Dec-15	225	PE	2.2	71	82000	-34000
RCOM	31-Dec-15	70	CE	7.45	186	1160000	-32000
LICHSGFIN	31-Dec-15	440	PE	3.75	57	33000	-31900
SUNPHARMA	31-Dec-15	720	CE	38.3	436	103200	-16800
M&M	31-Dec-15	1320	CE	58.4	77	10400	-13600
HINDUNILVR	31-Dec-15	780	PE	6.8	52	16200	-10800

Disclosure

- The Research Analysts and /or Ashika Stock Broking Limited do hereby certify that all the views expressed in this research report accurately reflect their views about the subject issuer(s) or securities. Moreover, they also certify the followings:-
- The Research Analyst or Ashika Stock Broking Limited or his/its Associates or his/its relative, has any financial interest in the subject company(ies) covered in this report. **No**
- The Research Analyst or Ashika Stock Broking Limited or his/its Associates or his/its relative, have actual/beneficial ownership of 1% or more in the subject company, at the end of the month immediately preceding the date of the publication of the research report. **No**
- The Research Analyst or Ashika Stock Broking Limited or his/its Associates or his/its relatives has any material conflict of interest at the time of publication of the research report. **No**
- The Research Analyst or Ashika Stock Broking Limited or his/its Associates have received compensation for investment banking or merchant banking or brokerage services or for product other than for investment banking or merchant banking or brokerage services from the companies covered in this report in the past 12 months. **No**
- The Research Analyst or Ashika Stock Broking Limited or his/its Associates have managed or co managed in the previous 12 months any private or public offering of securities for the company(ies) covered in this report. **No**
- The Research Analyst or Ashika Stock Broking Limited or his/its Associates have received any compensation or other benefits from the company(ies) covered in this report or any third party in connection with the Research Report. **No**
- The Research Analyst has served as an officer, director or employee of the company(ies) covered in the research report. **No**
- The Research Analyst or Ashika Stock Broking Limited has been engaged in Market making activity of the company(ies) covered in the research report. **No**

Disclaimer

This report is for the personal information of the authorized recipient and does not construe to be any investment, legal or taxation advice to you. Ashika Stock Broking Ltd. is not soliciting any action based upon it. This report is not for public distribution and has been furnished to you solely for your information and should not be reproduced or redistributed to any other person in any form. The report is based upon information that we consider reliable, but we do not represent that it is accurate or complete, and it should not be relied upon such. Ashika Stock Broking Ltd. or any of its affiliates or employees shall not be in anyway responsible for any loss or damage that may arise to any person from any inadvertent error in the information contained in this report. Ashika Stock Broking Ltd., or any of its affiliates or employees do not provide, at any time, any express or implied warranty of any kind, regarding any matter pertaining to this report, including without limitation the implied warranties of merchantability, fitness for a particular purpose, and non-infringement. The recipients of this report should rely on their own investigations.