

Technical Report

Closing Brief

Key benchmark indices surged today, 19 November 2015, tracking higher global markets on bets the US Federal Reserve would raise rates in December but proceed cautiously on more tightening. The market breadth indicating the overall health of the market was strong.

Technical Build up

- ❖ Bullish Marubazu candle with decrease in volume
- ❖ Buy crossover in oscillators.
- ❖ Lower band of Bollinger exist at 7641
- ❖ Crucial moving average of 20/50 SMA are at 7998 and 7971
- ❖ 200 SMA trend deciding level exist at 8332

Outlook for the day

Indian equity market surprised participants with a complete U turn after the previous sell-off and ended up by close to one and half percent. Positive global cues, stable oil price and government initiative with various steps for growth in economy boosted the market sentiment. Sentiments boosted mainly in response to US Fed meeting minutes, in which they stated that the pace of rate hike will be slow and that may start from as early as next month. On the technical front bullish candle in the previous trading session led to form bullish 'Railroad track' in daily chart though volume remained subdued. Immediate support at 7700 has been defended by Nifty and hence a swift towards 7800 has regained momentum in the market and it seems that the temporary pullback is likely to continue. The rebound rally to sustain up to the 12 day SMA of 7921 and could stretch up to 8000 levels; while 7700-7715 remains the key support now. On the F&O front short covering activity were noticed with decrease in OI followed by increase in price. Premium and CoC has increased while IndiaVIX too has decreased. On the option front higher strike price 8000 & 8100 seems to be covering short while unwinding of long position in ATM strike price call of 7800 & 7900 too were noticed, followed by fresh long buildup in ATM strike price put option of 7750 & 7800. SO in overall perspective cautious approach need to be maintained



Increase in OI with Increase in Price (Long Buildup)

Symbol	Prev OI	Curr OI	OI Chg (%)	Curr Pr.	Pr.Chg (%)
ENGINE					
RIND	707	990	40	212.70	10.80
ARVIND	2212	2891	30.7	309.85	9.30
HEROM					
OTOCO	5303	6401	20.7	2593.95	0.80
HAVELL					
S	2300	2666	15.9	274.80	4.30
DABUR	1422	1637	15.1	273.0	1.50

Increase in OI with Decrease in Price (Short Buildup)

Symbol	Prev OI	Curr OI	OI Chg (%)	Curr Pr.	Pr.Chg (%)
OIL	3172	3541	11.6	362.00	-
MINDTR					
EE	906	1003	10.7	1422.25	-2.1
DRREDDY	12002	12911	7.6	3312	-1.8
BEML	680	728	7.1	1046.0	-0.2
PETRON					
ET	1596	1678	5.1	207.45	-0.7

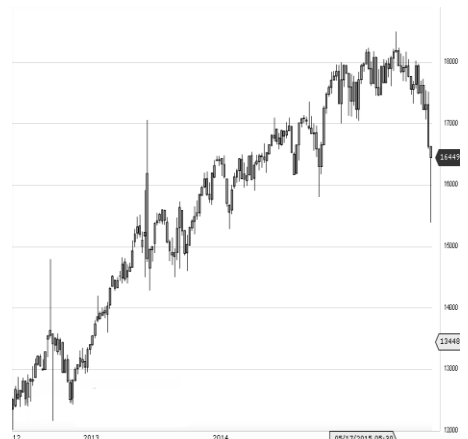
World Indices	LTP	Daily Ch(Pts)	Daily Ch(%)
Dow Jones	17732	-4	-0.02
Nasdaq	5073	-1	-0.03
S&P 500	2081	-2	-0.11
FTSE 100	6329	50	0.81
DAX	11085	125	1.14
Hang Seng	22457	-42	-0.19
Nikkei	19764	-95	-0.48
Sensex	25841	359	1.41
Nifty	7842	110	1.43

Commodity /Forex	LTP	Daily Ch(Pts)	Daily Ch(%)
Gold (\$/Oz)	1081.30	3.40	0.32
Silver (\$/Oz)	14.25	0.02	0.16
Copper(USD/lb.)	208.00	0.35	0.17
Brent Crude(USD/bbl)	44.33	0.15	0.34
USD/INR	66.18	-0.11	-0.17
USD/YEN	123.01	0.14	0.11
USD/EUR	1.0712	-0.0022	-0.20

Support/Resistance levels for Indian Equity Indices					
	S1	S2	CMP	R1	R2
Sensex	25700	25535	25841	25970	26100
Nifty	7800	7750	7842	7890	7920
Nifty (Fut)	7815	7765	7858	7905	7935

Pivot Level	
Sensex	25776
Nifty	7821

US: US market closed little changed Thursday, holding solid gains for the week so far, as investors eyed some corporate news and sought further indications of support for a December rate hike from data and Fed speakers. Technically DJIA is presently trading at the 5th leg through Elliot wave count with negative divergence in oscillators.



Nifty gained by 1.43% with Nifty future shaded 6.0 lakh shares in open interest and stock future added 556.6 lakh shares in open interest.

- Nifty PCR increased to 0.79 from 0.71
- Total Nifty Calls shaded 33.9 lakh shares in open interest.
- Total Nifty Puts added 38.1 lakh shares in open interest.
- Maximum open interest (Nifty) in Calls for Oct. series is at 8000 and 7700 put.
- FII's sold net Rs.343.18 (provisional), while DIIs bought net Rs.233.82 Cr in cash market.
- FII bought net Rs.2838.26 Cr. In F&O
- Securities in Ban Period: DLF & JINDALSTEL

Nifty Tracker

PARTICULARS	19/11/2015	18/11/2015	17/11/2015	16/11/2015
Spot	7842.75	7731.8	7837.55	7806.6
% Change in Spot	1.43%	-1.35%	0.40%	0.57%
Nifty(FUT) Nov	7858.35	7731.95	7852.6	7827.25
Nifty(FUT) Nov Vol.	171785	172971	138223	157193
Nifty(FUT) Nov - OI	16679475	17648925	16996425	17152425
Nifty(FUT) Dec	7895.7	7773.9	7894.95	7870.95
Nifty(FUT) Dec Vol.	19770	17488	6953	8555
Nifty(FUT) Dec - OI	4787175	4493250	4185825	4159050

Trade Statistics for 19/11/2015

PARTICULARS	NO. OF CONTRACTS	TURNOVER (RS. CR.)	PUT CALL RATIO
NSE Index Futures	2,97,766	16702	-
NSE Stock Futures	5,64,640	28266	-
NSE Index Options	38,09,775	2,21,184.51	-
NSE Stock Options	3,16,994	16101	0.59
NSE F&O Total Turnover	49,89,175	282,254	0.84
NSE Cash Turnover	-	15310	-
BSE Cash Turnover	-	2,553.70	-
Total Turnover	-	300117	-

FII Corner (F&O)

FII NET BUYING/SELLING & CHANGE IN OPEN INTEREST (Cr. Rupee)						
PARTICULARS	19/11/2015		18/11/2015		17/11/2015	
	Net Buying /Selling	Change In Open interest	Net Buying /Selling	Change In Open interest	Net Buying /Selling	Change In Open interest
Index Future	23	222	139	464	-139	-91
Index option	2481	7	-73	-234	945	891
Stock Future	390	1226	254	-579	-181	734
Stock option	-55	-42	-113	64	-75	268
Total	2839	1412	207	-285	550	1802

Market Open Interest

ADDITION/REDUCTION IN MARKET OPEN INTEREST					
Contracts	19/11/2015	18/11/2015	17/11/2015	16/11/2015	13/11/2015
Index Futures	-558	711	-23	-57	-170
Index Options	1547	-246	611	1238	383
Stock Futures	313	5355	1849	2710	3512
Stock Options	111	742	694	353	1159
F&O Total	1413	6562	3131.25	4244.38	4884.337

Nifty Option Open Interest Statistics

NIFTY OPTIONS HIGHEST ADDITION IN OPEN INTEREST						
Expiry	Strike	Option Type	Settlement Price	Volume	Open Interest	Change In OI
26-Nov-15	7800	PE	33.9	380375	4558275	1466025
26-Nov-15	7950	CE	23.35	44055	946950	459825
26-Nov-15	7850	PE	53.05	18883	591975	447150
26-Nov-15	7750	PE	20.8	42709	838875	444450
31-Dec-15	7200	PE	14.65	11846	1312725	286650
26-Nov-15	7600	PE	6.95	224940	4337700	260025
31-Dec-15	8300	CE	25.5	16245	1379850	248925
31-Dec-15	7600	PE	61.35	17546	881175	233750
31-Dec-15	7800	PE	112.75	15626	1285775	204150
26-Nov-15	7900	PE	80.6	107526	2380200	199050

NIFTY OPTIONS HIGHEST REDUCTION IN OPEN INTEREST						
Expiry	Strike	Option Type	Settlement Price	Volume	Open Interest	Change In OI
26-Nov-15	7800	CE	89.65	350744	3092475	-1344375
26-Nov-15	7900	CE	39.15	449238	4083000	-986850
26-Nov-15	8000	CE	13.6	319084	6368625	-687300
26-Nov-15	7700	CE	167.85	77120	1178175	-424050
26-Nov-15	8200	CE	2.3	74386	6167100	-366300
26-Nov-15	8500	CE	0.95	11142	2729025	-295575
26-Nov-15	8100	CE	4.75	158620	4599150	-271050
26-Nov-15	8300	CE	1.5	19555	3571950	-244275
26-Nov-15	7750	CE	125.15	12236	186225	-198300
26-Nov-15	8100	PE	237.5	7196	1147125	-180150

Stock Option Open Interest Statistics

STOCK OPTIONS WITH HIGHEST ADDITION IN OPEN INTEREST							
Symbol	Expiry	Strike	Option Type	Settl. Price	Volume	Open Interest	Change in OI
JPASSOCIAT	26-Nov-15	15	CE	0.15	432	25344000	9504000
UNITECH	26-Nov-15	7.5	CE	0.15	97	20790000	1771000
RCOM	26-Nov-15	70	CE	0.4	398	3960000	664000
RCOM	26-Nov-15	67.5	CE	0.9	211	1936000	584000
ASHOKLEY	26-Nov-15	92.5	PE	1.2	226	1232000	539000
UNITECH	31-Dec-15	10	CE	0.15	15	3773000	462000
IDBI	26-Nov-15	80	PE	0.4	362	1568000	448000
GMRINFRA	31-Dec-15	17.5	CE	0.35	27	3393000	429000
GMRINFRA	26-Nov-15	17.5	CE	0.05	40	5928000	351000
ARVIND	26-Nov-15	290	PE	1.3	661	387600	350200

STOCK OPTIONS WITH HIGHEST REDUCTION IN OPEN INTEREST							
Symbol	Expiry	Strike	Option Type	Settl. Price	Volume	Open Int.	Change in OI
DLF	26-Nov-15	130	CE	0.1	839	4360000	-3255000
DLF	26-Nov-15	120	CE	0.15	287	4210000	-830000
JPASSOCIAT	26-Nov-15	12.5	PE	0.3	90	6288000	-816000
DLF	26-Nov-15	110	CE	0.5	612	3105000	-735000
ASHOKLEY	26-Nov-15	92.5	CE	1.55	665	2814000	-651000
GMRINFRA	26-Nov-15	12.5	CE	1.95	25	2184000	-624000
DLF	26-Nov-15	115	CE	0.25	382	4405000	-585000
ICICIBANK	26-Nov-15	270	CE	2.5	2104	4119100	-501500
ASHOKLEY	26-Nov-15	100	CE	0.15	369	8421000	-469000
DLF	26-Nov-15	100	PE	0.65	242	1335000	-395000

Disclosure

- The Research Analysts and /or Ashika Stock Broking Limited do hereby certify that all the views expressed in this research report accurately reflect their views about the subject issuer(s) or securities. Moreover, they also certify the followings:-
- The Research Analyst or Ashika Stock Broking Limited or his/its Associates or his/its relative, has any financial interest in the subject company(ies) covered in this report. **No**
- The Research Analyst or Ashika Stock Broking Limited or his/its Associates or his/its relative, have actual/beneficial ownership of 1% or more in the subject company, at the end of the month immediately preceding the date of the publication of the research report. **No**
- The Research Analyst or Ashika Stock Broking Limited or his/its Associates or his/its relatives has any material conflict of interest at the time of publication of the research report. **No**
- The Research Analyst or Ashika Stock Broking Limited or his/its Associates have received compensation for investment banking or merchant banking or brokerage services or for product other than for investment banking or merchant banking or brokerage services from the companies covered in this report in the past 12 months. **No**
- The Research Analyst or Ashika Stock Broking Limited or his/its Associates have managed or co managed in the previous 12 months any private or public offering of securities for the company(ies) covered in this report. **No**
- The Research Analyst or Ashika Stock Broking Limited or his/its Associates have received any compensation or other benefits from the company(ies) covered in this report or any third party in connection with the Research Report. **No**
- The Research Analyst has served as an officer, director or employee of the company(ies) covered in the research report. **No**
- The Research Analyst or Ashika Stock Broking Limited has been engaged in Market making activity of the company(ies) covered in the research report. **No**

Disclaimer

This report is for the personal information of the authorized recipient and does not construe to be any investment, legal or taxation advice to you. Ashika Stock Broking Ltd. is not soliciting any action based upon it. This report is not for public distribution and has been furnished to you solely for your information and should not be reproduced or redistributed to any other person in any form. The report is based upon information that we consider reliable, but we do not represent that it is accurate or complete, and it should not be relied upon such. Ashika Stock Broking Ltd. or any of its affiliates or employees shall not be in anyway responsible for any loss or damage that may arise to any person from any inadvertent error in the information contained in this report. Ashika Stock Broking Ltd., or any of its affiliates or employees do not provide, at any time, any express or implied warranty of any kind, regarding any matter pertaining to this report, including without limitation the implied warranties of merchantability, fitness for a particular purpose, and non-infringement. The recipients of this report should rely on their own investigations.