

Closing Brief

Metal shares led the decline as key indices edged lower on the first trading session of the week. The market breadth indicating the overall health of the market was negative.

Technical Build up

- ❖ Bearish candle formation with decrease in volume.
- ❖ Oscillators in neutral price region with sell crossover.
- ❖ Upper band of Bollinger exist at 8999
- ❖ Crucial moving average of 20/50 SMA are at 8772 and 8497
- ❖ 200 SMA trend deciding level exist at 7976

Outlook for the day

Indian equity market witnessed profit booking activity ahead of some crucial event like that of rail budget on Thursday, Economic survey on Friday and all important budget on Saturday. On the technical front Nifty nose dived and slipped below the crucial support level of 8750 but managed to closed marginally above it. Next crucial support in Nifty is seen around 8600 which coincides with the 38.2% retracement of the entire rise since December 2014 onward. On the F&O front decrease in OI with decrease in price indicates of long liquidation. Indian VIX has increased marginally while cost of carry too has decreased indicates of a cautious approach. On the option front writing activity were seen in call option of 8800 and higher while long buildup were seen in put option of 8700 hence indicating negative outlook in the market. During the day Nifty to remain volatile, crucial intraday support seen at 8700 followed by 8650 while resistance exist at 8790 and then at 8840.

TOP PICK OF THE DAY

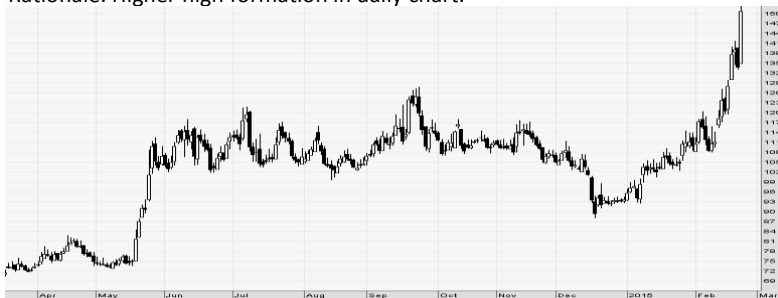
ADANIPOWER: (CMP -57.00)

Strategy: Short term buy – buy at 56.30
 With stop loss 54 for the Target 60 & 63
 Support: 55 & 53 Resistance: 58 & 60
 Rationale: positive divergence in oscillator.



ROLTA: (CMP -150.65)

Strategy: Short term buy call – buy at 146
 With stop loss 139 for the Target 162 & 174
 Support: 139 & 128 Resistance: 157 & 164
 Rationale: Higher high formation in daily chart.



World Indices	LTP	Daily Ch(Pts)	Daily Ch(%)
Dow Jones	18116	-23	-0.13
Nasdaq	4960	5	0.10
S&P 500	2109	-	-0.03
FTSE 100	6912	-3	-0.04
DAX	11130	80	0.73
Hang Seng	24719	-117	-0.47
Nikkei	18486	19	0.10
Sensex	28975	-256	-0.88
Nifty	8754	-78	-0.89

Commodity /Forex	LTP	Daily Ch(Pts)	Daily Ch(%)
Gold (\$/Oz)	1203.10	2.30	0.19
Silver (\$/Oz)	16.38	0.08	0.47
Copper(USD/lb.)	257.55	-1.10	-0.43
Brent Crude(USD/bbl)	59.24	0.34	0.58
USD/INR	62.31	0.09	0.15
USD/YEN	118.96	0.15	0.13
USD/EUR	1.1338	0.0003	0.03

Support/Resistance levels for Indian Equity Indices					
	S1	S2	CMP	R1	R2
Sensex	28795	28630	28975	29095	29260
Nifty	8700	8650	8754	8790	8840
Nifty (Fut)	8700	8650	8753	8790	8840

Pivot Level	
Sensex	29083
Nifty	8786

US: US market pulled back from Friday's records to close narrowly mixed on Monday ahead of Fed Chair Janet Yellen's remarks over the next two days. Technically DJIA is presently trading at the 5th leg through Elliot wave count with negative divergence in oscillators.



Nifty declined by 0.89% with Nifty future shaded 3.5 lakh shares in open interest and stock future added 422.4 lakh shares in open interest.

-Nifty PCR decreased to 0.85 from 0.93

-Total Nifty Calls added 46.4 lakh shares in open interest.

-Total Nifty Puts shaded 13.4 lakh shares in open interest.

-Maximum open interest (Nifty) in Calls for Dec. series is at 9000 and 8700 put.

-FII's bought net Rs.601.91(provisional), while DIIs sold net Rs.163.79 Cr in cash market.

-FII sold net Rs.752.58 Cr. In F&O

-Securities in Ban Period: HDIL

Nifty Tracker

PARTICULARS	23/02/2015	20/02/2015	19/02/2015	18/02/2015
Spot	8754.95	8833.6	8895.3	8869.1
% Change in Spot	-0.89%	-0.69%	0.30%	0.68%
Nifty(FUT) Feb	8753.45	8849.45	8916.15	8891.3
Nifty(FUT) Feb Vol.	660896	546704	518259	351950
Nifty(FUT) Feb - OI	16523375	22936200	24870425	25547200
Nifty(FUT) Mar	8815.85	8909.55	8972.95	8948.55
Nifty(FUT) Mar Vol.	303634	105968	57520	43386
Nifty(FUT) Mar - OI	10251525	4192700	2596500	1935025

Trade Statistics for 23/02/2015

PARTICULARS	NO. OF CONTRACTS	TURNOVER (RS. CR.)	PUT CALL RATIO
NSE Index Futures	11,06,631	27987	-
NSE Stock Futures	16,04,909	50262	-
NSE Index Options	99,36,783	2,38,679.73	-
NSE Stock Options	4,17,737	13875	0.45
NSE F&O Total Turnover	1,30,66,060	330,804	0.79
NSE Cash Turnover	-	17306	-
BSE Cash Turnover	-	3,570.52	-
Total Turnover	-	351680	-

FII Corner (F&O)

FII NET BUYING/SELLING & CHANGE IN OPEN INTEREST (Cr. Rupee)						
PARTICULARS	23/02/2015		20/02/2015		19/02/2015	
	Net Buying /Selling	Change In Open interest	Net Buying /Selling	Change In Open interest	Net Buying /Selling	Change In Open interest
Index Future	122	-2	-642	-153	-503	-527
Index option	-1261	-777	-43	154	-323	-1018
Stock Future	530	798	-325	-308	47	138
Stock option	-144	-17	-92	10	16	171
Total	-753	2	-1102	-297	-763	-1236

Market Open Interest

ADDITION/REDUCTION IN MARKET OPEN INTEREST					
Contracts	23/02/2015	20/02/2015	19/02/2015	18/02/2015	16/02/2015
Index Futures	-286	-367	203	190	446
Index Options	-10	211	332	1581	324
Stock Futures	3336	3840	1555	2266	3374
Stock Options	389	339	71	572	420
F&O Total	3429	4023	2161.52	4608.88	4564.23

Nifty Option Open Interest Statistics

NIFTY OPTIONS HIGHEST ADDITION IN OPEN INTEREST						
Expiry	Strike	Option Type	Settlement Price	Volume	Open Interest	Change In OI
26-Feb-15	8800	CE	41.5	747437	4005450	1103500
26-Feb-15	8900	CE	18.2	1397260	6174425	770850
26-Feb-15	8700	CE	87.5	153709	2271500	647525
26-Feb-15	8700	PE	38.3	858804	4341325	446950
26-Feb-15	9000	CE	7.25	1112393	7713525	410350
26-Feb-15	8750	CE	59.55	32647	398350	326125
26-Mar-15	9500	CE	19.85	65221	1402275	316350
26-Mar-15	9400	CE	30.5	54055	1259750	276250
30-Apr-15	9600	CE	40.1	16849	390300	272250
26-Feb-15	8950	CE	10.65	167905	763050	256300

NIFTY OPTIONS HIGHEST REDUCTION IN OPEN INTEREST						
Expiry	Strike	Option Type	Settlement Price	Volume	Open Interest	Change In OI
26-Feb-15	8800	PE	86.05	1170420	3129475	-1172050
26-Feb-15	8900	PE	157.4	402070	2000125	-613300
26-Feb-15	8600	PE	13.55	515542	3319200	-571900
26-Feb-15	9200	CE	1.65	238805	3575000	-379225
26-Feb-15	8850	PE	116.6	93020	240675	-240200
26-Feb-15	9000	PE	248.05	57736	1699175	-235650
26-Feb-15	9300	CE	1.2	38039	2709275	-185175
26-Feb-15	9150	CE	1.75	16407	513725	-170125
26-Feb-15	8500	PE	5.5	285536	3447600	-164925
26-Feb-15	8300	PE	1.9	38053	2007725	-124125

Stock Option Open Interest Statistics

STOCK OPTIONS WITH HIGHEST ADDITION IN OPEN INTEREST							
Symbol	Expiry	Strike	Option Type	Settl. Price	Volume	Open Interest	Change in OI
HDIL	26-Feb-15	115	CE	1.45	1370	2760000	1444000
ADANIPOWER	26-Feb-15	55	PE	0.35	502	2056000	1192000
ADANIPOWER	26-Mar-15	60	CE	3.9	253	1344000	1184000
ADANIPOWER	26-Feb-15	57.5	PE	1.4	162	936000	936000
JPASSOCIAT	26-Feb-15	25	CE	0.55	1056	7096000	928000
HDIL	26-Feb-15	110	CE	3.05	453	1704000	920000
ADANIPOWER	26-Feb-15	57.5	CE	1.15	1573	3440000	840000
ASHOKLEY	26-Feb-15	67.5	CE	1.2	527	4248000	808000
ADANIPOWER	26-Feb-15	60	CE	0.6	1145	3296000	744000
GMRINFRA	26-Mar-15	17.5	CE	2.4	114	1845000	720000

STOCK OPTIONS WITH HIGHEST REDUCTION IN OPEN INTEREST							
Symbol	Expiry	Strike	Option Type	Settl. Price	Volume	Open Int.	Change in OI
NHPC	26-Feb-15	20	PE	0.05	196	1810000	-880000
GMRINFRA	26-Feb-15	17.5	PE	0.5	228	2745000	-846000
UNITECH	26-Feb-15	20	CE	0.1	164	16893000	-828000
UNITECH	26-Feb-15	17.5	PE	0.35	116	4086000	-720000
JPASSOCIAT	26-Feb-15	25	PE	0.45	619	5784000	-624000
GMRINFRA	26-Feb-15	17.5	CE	1.2	252	5589000	-603000
ASHOKLEY	26-Feb-15	65	CE	2.95	150	2784000	-576000
UNITECH	26-Feb-15	22.5	CE	0.1	114	16830000	-549000
ADANIPOWER	26-Feb-15	50	CE	7.4	170	800000	-512000
HDIL	26-Feb-15	115	PE	6.2	681	424000	-508000

Paras Bothra
Research Head- Equities
Email: paras@ashikagroup.com
Ph: (033) 40102529

Tirthankar Das
Technical & Derivative Analyst
Email: tirthankar.d@ashikagroup.com
Ph: (033) 40102500; Extn: 115

Disclaimer:

This report is for the personal information of the authorized recipient and does not construe to be any investment, legal or taxation advice to you. Ashika Stock Broking Ltd., is not soliciting any action based upon it. This report is not for public distribution and has been furnished to you solely for your information and should not be reproduced or redistributed to any other person in any form. The report is based upon information that we consider reliable, but we do not represent that it is accurate or complete, and it should not be relied upon such. Ashika Stock Broking Ltd. or any of its affiliates or employees shall not be in anyway responsible for any loss or damage that may arise to any person from any inadvertent error in the information contained in this report. Ashika Stock Broking Ltd., or any of its affiliates or employees do not provide, at any time, any express or implied warranty of any kind, regarding any matter pertaining to this report, including without limitation the implied warranties of merchantability, fitness for a particular purpose, and non-infringement.