

Technical Report

Technical & Derivative Report

World Indices	LTP	Daily Ch(Pts)	Daily Ch(%)
Dow Jones	16284	235	1.47
Nasdaq	4620	102	2.28
S&P 500	1920	35	1.91
FTSE 100	6061	152	2.58
DAX	9660	210	2.22
Hang Seng	20846	289	1.41
Nikkei	17474	83	0.48
Sensex	26154	376	1.46
Nifty	7948	105	1.35

Commodity /Forex	LTP	Daily Ch(Pts)	Daily Ch(%)
Gold (\$/Oz)	1115.10	-0.10	-0.01
Silver (\$/Oz)	14.51	-0.01	-0.06
Copper(USD/lb.)	234.00	-0.10	-0.04
Brent Crude(USD/bbl)	48.46	0.09	0.19
USD/INR	65.59	-0.36	-0.55
USD/YEN	119.88	-	-
USD/EUR	1.1164	-0.0013	-0.12

Closing Brief

Key benchmark indices registered strong gains on positive global cues. The Sensex pierced the psychological 26,000 mark as gains in global stocks boosted sentiment on the domestic bourses a day after the RBI surprised by announcing a steeper-than-expected 50 basis points reduction in repo.

Technical Build up

- ❖ Bullish candle with increase in volume.
- ❖ Buy crossover in oscillators.
- ❖ Upper band of Bollinger exist at 8018
- ❖ Crucial moving average of 20/50 SMA are at 7814 and 8142
- ❖ 200 SMA trend deciding level exist at 8383

Outlook for the day

Indian equity market cheered for second day after the higher than expected 50 bps rate cut by RBI. Further media news of India surpassing U.S and China as the biggest FDI destination in the January-June period and slight improvement in India's Ranking in the Global Competitiveness Index boosted the domestic market sentiment. On the technical front Nifty formed bullish candle with long hairline formation with average volume indicating positive biasness in the market however it need to be considered that still continues to remain confined within the broader range of 7650-8050, a decisive close above or below it would dictate the trend in the market so aggressive long position need to be avoided. On the F&O front an OI witnessed decreased while price rise the previous day indicating there might be short covering rally in the market. Basis and CoC increased compared to the previous day. IndiaVIX decreased substantially the other day by almost 9%. too decreased marginally. On the option front put option strike prices of 7500 & 7900 saw long addition while ATM strike price call option saw writing activity. Though the data depicts a negative outlook but downside seems to be limited since lower price put option of 7400 & 7300 too witnessed writing activity.

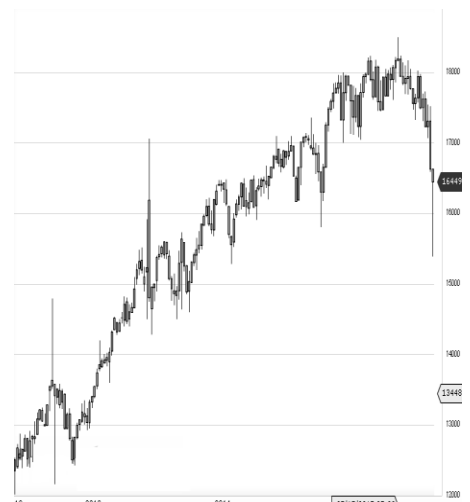
Support/Resistance levels for Indian Equity Indices

	S1	S2	CMP	R1	R2
Sensex	25995	25730	26154	26360	26755
Nifty	7900	7820	7948	8010	8100
Nifty (Fut)	7930	7850	7980	8040	8130

Pivot Level

Sensex	26084
Nifty	7927

US: US market closed higher by about 1.5 percent or more Wednesday, following a rally in global markets, but the major averages still posted the worst quarter in four years. Technically DJIA is presently trading at the 5th leg through Elliot wave count with negative divergence in oscillators.



Increase in OI with Increase in Price (Long Buildup)

Symbol	Prev OI	Curr OI	OI Chg (%)	Curr Pr.	Pr.Chg (%)
MARICO	87	288	231	406.4	1.90
TV18BR					
DCST	193	280	45.1	35.65	6.40
PETRON					
ET	1688	2006	18.8	178.05	0.50
IGL	1967	2300	16.9	478.85	3.20
BEML	120	138	15	1246.5	2.60

Increase in OI with Decrease in Price (Short Buildup)

Symbol	Prev OI	Curr OI	OI Chg (%)	Curr Pr.	Pr.Chg (%)
DISHTV	6267	10684	70.5	106.9	-3.5
GODREJI					
ND	1939	2485	28.2	337.5	-0.1
OIL	1975	2390	21	422.60	-0.6
EXIDEIN					
D	2977	3527	18.5	151.3	-0.1
VEDL	19532	21258	8.8	85.8	-1.2

Nifty gained by 1.35% with Nifty future shaded 0.5 lakh shares in open interest and stock future added 524.0 lakh shares in open interest.

- Nifty PCR increased to 0.92 from 0.91
- Total Nifty Calls added 7.0 lakh shares in open interest.
- Total Nifty Puts added 13.3 lakh shares in open interest.
- Maximum open interest (Nifty) in Calls for Oct. series is at 8300 and 7500 put.
- FII's bought net Rs.116.08 (provisional), while DIIs sold net Rs.191.78 Cr in cash market.
- FII sold net Rs.297.63 Cr. In F&O
- Securities in Ban Period: NIL

Nifty Tracker

PARTICULARS	30/09/2015	29/09/2015	28/09/2015	24/09/2015
Spot	7948.9	7843.3	7795.7	7868.5
% Change in Spot	1.35%	0.61%	-0.93%	0.29%
Nifty(FUT) Oct	7980.35	7875.85	7825.5	7895.7
Nifty(FUT) Oct Vol.	533627	925370	411586	436425
Nifty(FUT) Oct - OI	18653575	18824900	18599050	18368400
Nifty(FUT) Nov	8015.4	7914	7860.7	7929.25
Nifty(FUT) Nov Vol.	4508	7826	3933	2332
Nifty(FUT) Nov - OI	988050	901950	831825	792075

Trade Statistics for 30/09/2015

PARTICULARS	NO. OF CONTRACTS	TURNOVER (RS. CR.)	PUT CALL RATIO
NSE Index Futures	7,30,950	19252	-
NSE Stock Futures	9,06,059	24099	-
NSE Index Options	48,13,117	1,06,856.97	-
NSE Stock Options	4,79,746	12978	0.43
NSE F&O Total Turnover	69,29,872	163,186	0.89
NSE Cash Turnover	-	20153	-
BSE Cash Turnover	-	4,344.13	-
Total Turnover	-	187683	-

FII Corner (F&O)

FII NET BUYING/SELLING & CHANGE IN OPEN INTEREST (Cr. Rupee)						
PARTICULARS	30/09/2015		29/09/2015		28/09/2015	
	Net Buying /Selling	Change In Open interest	Net Buying /Selling	Change In Open interest	Net Buying /Selling	Change In Open interest
Index Future	-145	277	-519	540	9	-5
Index option	-120	1506	3615	5070	1706	2946
Stock Future	-111	1301	135	990	25	116
Stock option	78	253	16	270	97	736
Total	-298	3338	3247	6871	1837	3792

Market Open Interest

ADDITION/REDUCTION IN MARKET OPEN INTEREST					
Contracts	30/09/2015	29/09/2015	28/09/2015	24/09/2015	23/09/2015
Index Futures	262	1058	-11309	513	753
Index Options	1894	1575	-12227	1831	761
Stock Futures	2151	7828	-68911	8979	2609
Stock Options	1312	1417	-10183	864	218
F&O Total	5619	11878	-102630.22	12187.18	4341.14

Nifty Option Open Interest Statistics

NIFTY OPTIONS HIGHEST ADDITION IN OPEN INTEREST						
Expiry	Strike	Option Type	Settlement Price	Volume	Open Interest	Change In OI
29-Oct-15	7900	PE	127.85	229179	1989775	471225
29-Oct-15	7500	PE	44.75	275694	4550050	429975
29-Oct-15	8300	CE	35.1	225870	3922275	294075
29-Oct-15	8000	CE	145.35	412864	3913825	211725
29-Oct-15	8000	PE	165.85	108198	1670500	200300
29-Oct-15	7700	PE	75.95	315705	2684825	161400
29-Oct-15	7600	PE	58.2	242327	3047250	155250
29-Oct-15	6600	PE	4.05	12391	336200	108800
31-Dec-15	8800	CE	36.3	1624	205300	88050
31-Dec-15	8700	CE	50.15	1508	194675	85125

NIFTY OPTIONS HIGHEST REDUCTION IN OPEN INTEREST						
Expiry	Strike	Option Type	Settlement Price	Volume	Open Interest	Change In OI
29-Oct-15	7400	PE	33.95	169734	3336700	-282350
29-Oct-15	7800	CE	274.25	87589	1668075	-230125
29-Oct-15	7900	CE	205.25	220991	2172650	-124750
29-Oct-15	7200	PE	18.75	91979	1496700	-117125
29-Oct-15	7100	PE	13.75	60185	721225	-78575
29-Oct-15	6900	PE	7.5	24111	445525	-72425
29-Oct-15	6800	PE	5.75	22701	344250	-48150
29-Oct-15	7000	PE	9.9	65645	1829200	-45650
29-Oct-15	8200	CE	59.95	366550	3689850	-45125
29-Oct-15	7700	CE	349.4	18890	955900	-40300

Stock Option Open Interest Statistics

STOCK OPTIONS WITH HIGHEST ADDITION IN OPEN INTEREST							
Symbol	Expiry	Strike	Option Type	Settl. Price	Volume	Open Interest	Change in OI
IDFC	29-Oct-15	145	CE	0	22488	8242000	5466000
IDFC	29-Oct-15	142.5	CE	0	23037	5742000	4908000
IDFC	29-Oct-15	140	PE	0	10847	4454000	2404000
IDFC	29-Oct-15	137.5	PE	0	7392	2522000	2172000
UNITECH	29-Oct-15	7.5	CE	0.25	470	12947000	1903000
IDFC	29-Oct-15	147.5	CE	0	3968	1896000	1610000
JPASSOCIAT	29-Oct-15	10	PE	0.4	336	4072000	1496000
IDFC	29-Oct-15	135	PE	0	6361	3712000	1286000
DISHTV	29-Oct-15	110	CE	3.75	1136	1360000	1196000
DISHTV	29-Oct-15	105	PE	4.25	807	1464000	1192000

STOCK OPTIONS WITH HIGHEST REDUCTION IN OPEN INTEREST							
Symbol	Expiry	Strike	Option Type	Settl. Price	Volume	Open Int.	Change in OI
IDFC	29-Oct-15	140	CE	0	30970	2812000	-356000
UNITECH	29-Oct-15	10	CE	0.05	124	3300000	-341000
HDIL	29-Oct-15	70	CE	7.6	560	770000	-252000
INFY	29-Oct-15	1140	CE	54.05	2094	179000	-229000
HDIL	29-Oct-15	75	CE	5.05	1506	1656000	-222000
IDFC	29-Oct-15	135	CE	0	366	358000	-216000
BHEL	29-Oct-15	210	CE	7.5	1113	421000	-196000
TATAMOTORS	29-Oct-15	300	CE	13.95	4044	879500	-188000
TATASTEEL	29-Oct-15	230	CE	3.85	1304	911000	-179000
HINDUNILVR	29-Oct-15	800	CE	30.95	1818	76000	-155250

Disclosure

- The Research Analysts and /or Ashika Stock Broking Limited do hereby certify that all the views expressed in this research report accurately reflect their views about the subject issuer(s) or securities. Moreover, they also certify the followings:-
- The Research Analyst or Ashika Stock Broking Limited or his/its Associates or his/its relative, has any financial interest in the subject company(ies) covered in this report. **No**
- The Research Analyst or Ashika Stock Broking Limited or his/its Associates or his/its relative, have actual/beneficial ownership of 1% or more in the subject company, at the end of the month immediately preceding the date of the publication of the research report. **No**
- The Research Analyst or Ashika Stock Broking Limited or his/its Associates or his/its relatives has any material conflict of interest at the time of publication of the research report. **No**
- The Research Analyst or Ashika Stock Broking Limited or his/its Associates have received compensation for investment banking or merchant banking or brokerage services or for product other than for investment banking or merchant banking or brokerage services from the companies covered in this report in the past 12 months. **No**
- The Research Analyst or Ashika Stock Broking Limited or his/its Associates have managed or co managed in the previous 12 months any private or public offering of securities for the company(ies) covered in this report. **No**
- The Research Analyst or Ashika Stock Broking Limited or his/its Associates have received any compensation or other benefits from the company(ies) covered in this report or any third party in connection with the Research Report. **No**
- The Research Analyst has served as an officer, director or employee of the company(ies) covered in the research report. **No**
- The Research Analyst or Ashika Stock Broking Limited has been engaged in Market making activity of the company(ies) covered in the research report. **No**

Disclaimer

This report is for the personal information of the authorized recipient and does not construe to be any investment, legal or taxation advice to you. Ashika Stock Broking Ltd. is not soliciting any action based upon it. This report is not for public distribution and has been furnished to you solely for your information and should not be reproduced or redistributed to any other person in any form. The report is based upon information that we consider reliable, but we do not represent that it is accurate or complete, and it should not be relied upon such. Ashika Stock Broking Ltd. or any of its affiliates or employees shall not be in anyway responsible for any loss or damage that may arise to any person from any inadvertent error in the information contained in this report. Ashika Stock Broking Ltd., or any of its affiliates or employees do not provide, at any time, any express or implied warranty of any kind, regarding any matter pertaining to this report, including without limitation the implied warranties of merchantability, fitness for a particular purpose, and non-infringement. The recipients of this report should rely on their own investigations.