

Technical Report

Technical & Derivative Report

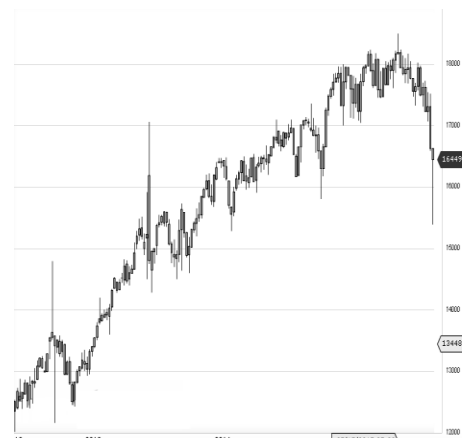
World Indices	LTP	Daily Ch(Pts)	Daily Ch(%)
Dow Jones	16374	23	0.14
Nasdaq	4733	-16	-0.35
S&P 500	1951	2	0.12
FTSE 100	6194	110	1.82
DAX	10317	269	2.68
Hang Seng			
Nikkei			
Sensex	25764	311	1.22
Nifty	7823	106	1.37

Commodity /Forex	LTP	Daily Ch(Pts)	Daily Ch(%)
Gold (\$/Oz)	1123.40	-1.10	-0.10
Silver (\$/Oz)	14.66	-0.05	-0.35
Copper(USD/lb.)	236.55	-1.90	-0.80
Brent Crude(USD/bbl)	50.52	-0.16	-0.32
USD/INR	66.24	0.04	0.07
USD/YEN	119.84	-0.23	-0.19
USD/EUR	1.1127	0.0004	0.04

Support/Resistance levels for Indian Equity Indices					
	S1	S2	CMP	R1	R2
Sensex	25555	25405	25764	25890	26020
Nifty	7760	7715	7823	7860	7900
Nifty (Fut)	7780	7735	7842	7880	7920

Pivot Level	
Sensex	25718
Nifty	7807

US: US market closed narrowly mixed, attempting to extend a recovery as investors eyed fluctuations in oil prices and awaited the final jobs report before the Federal Reserve's key September meeting. Technically DJIA is presently trading at the 5th leg through Elliot wave count with negative divergence in oscillators.



Closing Brief

A decent recovery was witnessed on the bourses after share prices witnessed a steep slide recently. Metal and banking stocks led rally for key benchmark indices which remained in green throughout the trading session. The market breadth indicating the overall health of the market was strong.

Technical Build up

- ❖ Inside day bar with marginal rise in volume.
- ❖ Sell crossover in oscillators.
- ❖ Lower band of Bollinger exist at 7574
- ❖ Crucial moving average of 20/50 SMA are at 8181 and 8358
- ❖ 200 SMA trend deciding level exist at 8438

Outlook for the day

Indian equity market witnessed the much needed respite after three consecutive day of decline. Positive global cues, stable oil price and better than expected Service and Composite PMI data lifted the market. On the technical front trend continues to remain negative with lower low however, as long as 38.2% retracement since Aug'13 onward remains intact at 7590 traders would keep hopes alive supported by oversold reading in oscillator. On the F&O front short covering activity were seen with decrease in OI followed by increase in price. Basis though decreased with marginal increase in CoC. Indian VIX too decreased the previous day. On the option front call option of 8200 & 8400 witnessed the maximum long addition followed by put option of 8000 & 8100 witnessing writing activity hinting towards a positive outlook in the market.



Increase in OI with Increase in Price (Long Buildup)					
Symbol	Prev OI	Curr OI	OI Chg (%)	Curr Pr.	Pr.Chg (%)
JSWENE					
RGY	1915	2148	12.2	74.45	7.40
ZEEL	5958	6627	11.2	371.55	2.30
DLF	16405	18174	10.8	121.7	10.40
AMBUJA					
CEM	8250	9090	10.2	219.15	3.90
IBREALE					
ST	5779	6305	9.1	64.60	6.40

Increase in OI with Decrease in Price (Short Buildup)					
Symbol	Prev OI	Curr OI	OI Chg (%)	Curr Pr.	Pr.Chg (%)
AMTEKA					
UTO	3977	4977	25.1	31.10	-36.0
KSCL	4429	4983	12.5	447.0	-5.6
JUSTDIA					
L	4617	5182	12.2	848.50	-0.8
AMARJA					
BAT	1419	1554	9.5	977.70	-0.1
GLENM					
ARK	10261	11233	9.5	1070.4	-1.2M

Nifty declined by 1.37% with Nifty future shaded 0.9 lakh shares in open interest and stock future added 22.9 lakh shares in open interest.

- Nifty PCR decreased to 0.99 from 0.98
- Total Nifty Calls added 25.0 lakh shares in open interest.
- Total Nifty Puts added 27.6 lakh shares in open interest.
- Maximum open interest (Nifty) in Calls for Apr. series is at 8500 and 7800 put.
- FII's sold net Rs.394.31 (provisional), while DIIs bought net Rs.840.35 Cr in cash market.
- FII bought net Rs.1035.34 Cr. In F&O
- Securities in Ban Period: NIL

Nifty Tracker

PARTICULARS	03/09/2015	02/09/2015	01/09/2015	31/08/2015
Spot	7823	7717	7785.85	7971.3
% Change in Spot	1.37%	-0.88%	-2.33%	-0.38%
Nifty(FUT) Sep	7842.55	7742.15	7798.8	8000.05
Nifty(FUT) Sep Vol.	491572	696245	681432	538965
Nifty(FUT) Sep - OI	22688775	22781175	22122925	22112225
Nifty(FUT) Oct	7883.8	7780.2	7837.35	8042.35
Nifty(FUT) Oct Vol.	18741	20826	32408	19816
Nifty(FUT) Oct - OI	1012775	1015400	879725	716900

Trade Statistics for 03/09/2015

PARTICULARS	NO. OF CONTRACTS	TURNOVER (RS. CR.)	PUT CALL RATIO
NSE Index Futures	6,80,083	16996	-
NSE Stock Futures	7,68,138	19310	-
NSE Index Options	57,90,650	1,23,435.45	-
NSE Stock Options	3,50,071	9002	0.52
NSE F&O Total Turnover	75,88,942	168,744	0.85
NSE Cash Turnover	-	15060	-
BSE Cash Turnover	-	2,362.85	-
Total Turnover	-	186167	-

FII Corner (F&O)

FII NET BUYING/SELLING & CHANGE IN OPEN INTEREST (Cr. Rupee)						
PARTICULARS	03/09/2015		02/09/2015		01/09/2015	
	Net Buying /Selling	Change In Open interest	Net Buying /Selling	Change In Open interest	Net Buying /Selling	Change In Open interest
Index Future	459	758	-1790	1134	-698	-337
Index option	268	6439	477	2090	818	2125
Stock Future	321	1107	-169	294	-192	-1181
Stock option	-12	102	39	127	66	276
Total	1036	8405	-1443	3645	-6	883

Market Open Interest

ADDITION/REDUCTION IN MARKET OPEN INTEREST					
Contracts	03/09/2015	02/09/2015	01/09/2015	31/08/2015	28/08/2015
Index Futures	-221	1180	58	160	-9128
Index Options	1021	410	-1861	400	-14164
Stock Futures	3965	5297	6448	5825	-53421
Stock Options	503	717	1032	1097	-12634
F&O Total	5268	7604	5676.72	7481.96	-89346.93

Nifty Option Open Interest Statistics

NIFTY OPTIONS HIGHEST ADDITION IN OPEN INTEREST						
Expiry	Strike	Option Type	Settlement Price	Volume	Open Interest	Change In OI
24-Sep-15	7200	PE	34.8	193334	3032350	852175
24-Sep-15	8200	CE	39	405863	4462350	713250
24-Sep-15	7300	PE	45.4	190733	2013200	475375
24-Sep-15	7500	PE	75.9	430696	4214250	315725
24-Sep-15	8400	CE	13.55	212537	2720025	288750
29-Oct-15	8600	CE	25.3	23015	655625	276750
24-Sep-15	7000	PE	18.75	136048	2274525	252225
24-Sep-15	7600	PE	98.65	279411	3387575	238925
24-Sep-15	7900	PE	206.25	86455	2686000	220350
24-Sep-15	8100	CE	63.85	340069	2987325	204725

NIFTY OPTIONS HIGHEST REDUCTION IN OPEN INTEREST						
Expiry	Strike	Option Type	Settlement Price	Volume	Open Interest	Change In OI
24-Sep-15	8600	CE	5.05	83762	1606425	-127875
24-Sep-15	8000	PE	259.2	65482	4373150	-96150
24-Sep-15	8100	PE	322.9	18039	1351625	-89075
24-Sep-15	7700	PE	127.95	242897	2142950	-84325
29-Oct-15	8100	PE	356.4	5762	1196400	-65650
24-Sep-15	8300	PE	474.4	4919	912150	-58975
24-Sep-15	7500	CE	411.2	10182	822975	-38375
29-Oct-15	8200	PE	416.55	3433	970550	-36225
29-Oct-15	8000	PE	302.25	7953	734000	-35625
29-Oct-15	7700	PE	182.15	9337	268625	-28075

Stock Option Open Interest Statistics

STOCK OPTIONS WITH HIGHEST ADDITION IN OPEN INTEREST							
Symbol	Expiry	Strike	Option Type	Settl. Price	Volume	Open Interest	Change in OI
IFCI	24-Sep-15	22.5	CE	0.25	313	3400000	952000
DLF	24-Sep-15	110	PE	4.1	1900	1632000	874000
UNITECH	26-Nov-15	7.5	CE	1.15	16	924000	847000
DLF	24-Sep-15	100	PE	2.1	2000	1780000	662000
AMTEKAUTO	24-Sep-15	40	CE	3	938	632000	632000
DLF	24-Sep-15	120	PE	7.65	1287	1124000	612000
IBREALEST	24-Sep-15	60	PE	2.3	346	1288000	600000
JPASSOCIAT	24-Sep-15	12.5	CE	0.15	329	9064000	600000
SBIN	24-Sep-15	240	CE	8.2	3791	1809000	568000
SBIN	24-Sep-15	250	CE	5.2	4210	3198000	545000

STOCK OPTIONS WITH HIGHEST REDUCTION IN OPEN INTEREST							
Symbol	Expiry	Strike	Option Type	Settl. Price	Volume	Open Int.	Change in OI
AXISBANK	24-Sep-15	500	CE	15.65	3879	818500	-188000
ASHOKLEY	24-Sep-15	105	CE	0.7	242	1576000	-184000
SAIL	24-Sep-15	50	CE	1.75	232	748000	-140000
DLF	24-Sep-15	110	CE	15	617	698000	-138000
RELIANCE	24-Sep-15	900	CE	10.65	3339	603750	-127750
SBIN	24-Sep-15	270	CE	1.85	2086	2369000	-125000
UNITECH	24-Sep-15	7.5	CE	0.25	389	10186000	-121000
DLF	24-Sep-15	115	CE	11.5	1245	816000	-120000
BPCL	24-Sep-15	880	CE	19.05	618	93000	-116000
DISHTV	24-Sep-15	105	CE	6	211	456000	-116000

Disclosure

- The Research Analysts and /or Ashika Stock Broking Limited do hereby certify that all the views expressed in this research report accurately reflect their views about the subject issuer(s) or securities. Moreover, they also certify the followings:-
- The Research Analyst or Ashika Stock Broking Limited or his/its Associates or his/its relative, has any financial interest in the subject company(ies) covered in this report. **No**
- The Research Analyst or Ashika Stock Broking Limited or his/its Associates or his/its relative, have actual/beneficial ownership of 1% or more in the subject company, at the end of the month immediately preceding the date of the publication of the research report. **No**
- The Research Analyst or Ashika Stock Broking Limited or his/its Associates or his/its relatives has any material conflict of interest at the time of publication of the research report. **No**
- The Research Analyst or Ashika Stock Broking Limited or his/its Associates have received compensation for investment banking or merchant banking or brokerage services or for product other than for investment banking or merchant banking or brokerage services from the companies covered in this report in the past 12 months. **No**
- The Research Analyst or Ashika Stock Broking Limited or his/its Associates have managed or co managed in the previous 12 months any private or public offering of securities for the company(ies) covered in this report. **No**
- The Research Analyst or Ashika Stock Broking Limited or his/its Associates have received any compensation or other benefits from the company(ies) covered in this report or any third party in connection with the Research Report. **No**
- The Research Analyst has served as an officer, director or employee of the company(ies) covered in the research report. **No**
- The Research Analyst or Ashika Stock Broking Limited has been engaged in Market making activity of the company(ies) covered in the research report. **No**

Disclaimer

This report is for the personal information of the authorized recipient and does not construe to be any investment, legal or taxation advice to you. Ashika Stock Broking Ltd. is not soliciting any action based upon it. This report is not for public distribution and has been furnished to you solely for your information and should not be reproduced or redistributed to any other person in any form. The report is based upon information that we consider reliable, but we do not represent that it is accurate or complete, and it should not be relied upon such. Ashika Stock Broking Ltd. or any of its affiliates or employees shall not be in anyway responsible for any loss or damage that may arise to any person from any inadvertent error in the information contained in this report. Ashika Stock Broking Ltd., or any of its affiliates or employees do not provide, at any time, any express or implied warranty of any kind, regarding any matter pertaining to this report, including without limitation the implied warranties of merchantability, fitness for a particular purpose, and non-infringement. The recipients of this report should rely on their own investigations.