

## Technical Report

### Technical & Derivative Report

World Indices	LTP	Daily Ch(Pts)	Daily Ch(%)
Dow Jones	17918	89	0.50
Nasdaq	5145	17	0.35
S&P 500	2109	5	0.27
FTSE 100	6383	21	0.34
DAX	10951	-	-
Hang Seng	23136	567	2.52
Nikkei	19095	412	2.21
Sensex	26590	31	0.12
Nifty	8060	9	0.12

Commodity /Forex	LTP	Daily Ch(Pts)	Daily Ch(%)
Gold (\$/Oz)	1120.60	6.50	0.58
Silver (\$/Oz)	15.30	0.06	0.40
Copper(USD/lb.)	232.45	-0.60	-0.26
Brent Crude(USD/bbl)	50.22	-0.32	-0.63
USD/INR	65.65	0.07	0.11
USD/YEN	121.24	0.17	0.14
USD/EUR	1.0949	-0.0015	-0.14

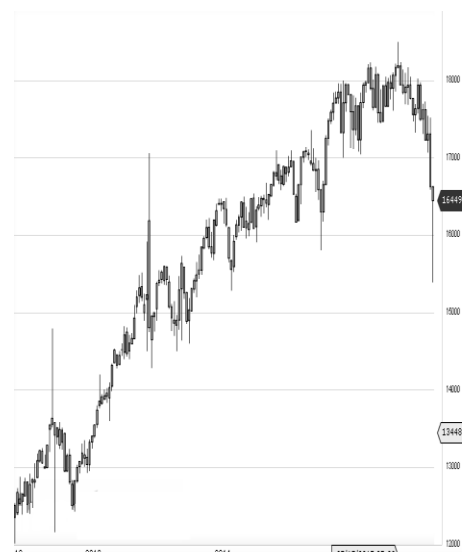
#### Support/Resistance levels for Indian Equity Indices

	S1	S2	CMP	R1	R2
Sensex	26425	26290	26590	26690	26790
Nifty	8010	7970	8060	8090	8120
Nifty (Fut)	8035	7995	8087	8115	8145

#### Pivot Level

Sensex	26612
Nifty	8064

**US:** US market closed higher Tuesday, off session highs, supported by gains in energy and tech stocks. Technically DJIA is presently trading at the 5th leg through Elliot wave count with negative divergence in oscillators.



### Closing Brief

Amid a divergent trend among various index constituents, key benchmark indices provisionally settled near the flat line. The market breadth indicating the overall health of the market was positive.

### Technical Build up

- ❖ Bearish Man candle with decrease in volume
- ❖ Sell crossover in oscillators.
- ❖ Lower band of Bollinger exist at 8023
- ❖ Crucial moving average of 20/50 SMA are at 8167 and 8003
- ❖ 200 SMA trend deciding level exist at 8375

### Outlook for the day

Indian equity market failed to build on initial gains and ended almost unchanged in the previous trading session. USD/INR gained to 1-month high which is a major concern in the market. On the technical front Nifty has able to find support from the 50dma followed by Hammer formation in daily chart indicating near term strength. However in the medium term perspective downward trending line is still not breached above 8369. That level also happened to be 200dma and was required to be crossed for reversal pattern. In the recent past had given a breakout from an 'Inverse Head & Shoulder' pattern in the daily chart. The neckline breakout levels of 8050 could now act as a strong support for the index. Thus, going forward, 8088 - 8050 becomes a major support zone for the index if it is able to hold this support level, then some recovery towards 8200 - 8250 Levels can be witnessed. However, a failure to do so may lead to extended correction towards 8000 level. On the F&O front marginal rise in OI was noticed with gradual increase in Indian VIX indicating an attempt towards hedge through Future contract. On the option front lower strike price put option of 7800 & 8000 continued to be witnessed long addition followed by put writing in higher strike prices of 8400 & 8500 indicating traders are betting on event risk from the Bihar election and decision in favor of the present government is also hedged with long put.



#### Increase in OI with Increase in Price (Long Buildup)

Symbol	Prev OI	Curr OI	OI Chg (%)	Curr Pr.	Pr.Chg (%)
MARICO	660	1079	63.5	386.90	0.60
PETRON ET	1178	1381	17.2	200.8	3.90
POWER GRID	4370	5037	15.3	132.4	2.20
IOC	7626	8788	15.2	405.05	1.70
ACC	2891	3311	14.5	1428.50	1.70

#### Increase in OI with Decrease in Price (Short Buildup)

Symbol	Prev OI	Curr OI	OI Chg (%)	Curr Pr.	Pr.Chg (%)
HEXAW ARE	2253	2678	18.9	229.75	-0.9
BATAIN DIA	3271	3800	16.2	475.95	-2.0
ARVIND	1678	1907	13.7	276.30	-1.1
BEML	602	679	12.8	1116.45	-1.7
LUPIN	10054	11192	11.3	1881.3	-1.5

Nifty gained by 0.12% with Nifty future added 1.2 lakh shares in open interest and stock future added 325.8 lakh shares in open interest.

- Nifty PCR increased to 0.89 from 0.87
- Total Nifty Calls added 17.8 lakh shares in open interest.
- Total Nifty Puts added 28.4 lakh shares in open interest.
- Maximum open interest (Nifty) in Calls for Oct. series is at 8500 and 7800 put.
- FII's sold net Rs.449.84 (provisional), while DIIs bought net Rs.350.31 Cr in cash market.
- FII bought net Rs.767.07 Cr. In F&O
- Securities in Ban Period: NIL

## Nifty Tracker

PARTICULARS	03/11/2015	02/11/2015	30/10/2015	29/10/2015
Spot	8060.7	8050.8	8065.8	8111.75
% Change in Spot	0.12%	-0.19%	-0.57%	-0.73%
Nifty(FUT) Nov	8087.25	8076.15	8094.7	8142.7
Nifty(FUT) Nov Vol.	109417	117483	160902	123059
Nifty(FUT) Nov - OI	19020225	18960600	18779175	17830125
Nifty(FUT) Dec	8129.75	8119.25	8135.85	8186.25
Nifty(FUT) Dec Vol.	3292	4093	5986	5527
Nifty(FUT) Dec - OI	3232650	3205350	3117975	3006300

## Trade Statistics for 03/11/2015

PARTICULARS	NO. OF CONTRACTS	TURNOVER (RS. CR.)	PUT CALL RATIO
NSE Index Futures	2,06,306	11748	-
NSE Stock Futures	4,24,688	21864	-
NSE Index Options	14,49,551	87234	-
NSE Stock Options	1,86,334	9895	0.5
NSE F&O Total Turnover	22,66,880	130,741	0.77
NSE Cash Turnover	-	14991	-
BSE Cash Turnover	-	2,583.22	-
Total Turnover	-	148314	-

## FII Corner (F&O)

FII NET BUYING/SELLING & CHANGE IN OPEN INTEREST (Cr. Rupee)						
PARTICULARS	03/11/2015		02/11/2015		30/10/2015	
	Net Buying /Selling	Change In Open interest	Net Buying /Selling	Change In Open interest	Net Buying /Selling	Change In Open interest
Index Future	402	-4	-256	-224	334	-115
Index option	244	2983	2215	4770	2154	7661
Stock Future	117	342	-267	829	-77	281
Stock option	3	287	72	463	221	1383
Total	766	3608	1764	5838	2632	9211

## Market Open Interest

ADDITION/REDUCTION IN MARKET OPEN INTEREST					
Contracts	03/11/2015	02/11/2015	30/10/2015	29/10/2015	28/10/2015
Index Futures	249	276	-6923	1190	-329
Index Options	557	957	-9977	2656	184
Stock Futures	4102	6612	-58691	12431	3117
Stock Options	1330	1757	-13288	1480	206
F&O Total	6238	9601	-88879.05	17756.91	3177.75

## Nifty Option Open Interest Statistics

NIFTY OPTIONS HIGHEST ADDITION IN OPEN INTEREST						
Expiry	Strike	Option Type	Settlement Price	Volume	Open Interest	Change In OI
26-Nov-15	8000	PE	111.15	130593	3525300	382050
26-Nov-15	7800	PE	61.1	63831	3785475	380850
26-Nov-15	7500	PE	22.25	35100	2845425	293100
26-Nov-15	7600	PE	31.45	30064	2049825	238425
26-Nov-15	8200	CE	86.3	133833	3099150	233700
26-Nov-15	8300	CE	51.75	100630	3224325	219900
31-Dec-15	7900	PE	153.15	4500	533850	205700
26-Nov-15	8100	PE	149.3	65726	2533875	190050
31-Dec-15	8300	CE	136.9	4594	452675	189150
26-Nov-15	7900	PE	82.45	73682	3599175	171900

NIFTY OPTIONS HIGHEST REDUCTION IN OPEN INTEREST						
Expiry	Strike	Option Type	Settlement Price	Volume	Open Interest	Change In OI
26-Nov-15	8500	PE	420.1	996	647475	-14775
26-Nov-15	8400	PE	340.1	1501	597525	-14025
26-Nov-15	8300	PE	263.5	6283	786450	-6375
26-Nov-15	8600	PE	509.1	126	276000	-4575
31-Dec-15	9000	PE	863.8	116	411225	-2925
31-Dec-15	8500	PE	445.9	159	804750	-2000
26-Nov-15	9000	PE	896.35	498	465750	-1275
26-Nov-15	6500	PE	1.45	76	92100	-1200
31-Dec-15	6900	PE	21.6	32	16525	-875
26-Nov-15	8250	PE	233.4	284	9450	-750

## Stock Option Open Interest Statistics

STOCK OPTIONS WITH HIGHEST ADDITION IN OPEN INTEREST							
Symbol	Expiry	Strike	Option Type	Settl. Price	Volume	Open Interest	Change in OI
UNITECH	26-Nov-15	10	CE	0.1	90	17248000	1925000
DLF	26-Nov-15	130	CE	2.95	1117	3745000	1760000
RPOWER	26-Nov-15	50	CE	2.05	435	2664000	1692000
ASHOKLEY	26-Nov-15	95	CE	2.4	1182	5621000	1358000
IFCI	26-Nov-15	30	CE	0.45	970	10400000	1140000
UNITECH	26-Nov-15	7.5	CE	0.5	54	10395000	1078000
ASHOKLEY	26-Nov-15	100	CE	1.25	1436	5726000	966000
SBIN	26-Nov-15	250	CE	4.85	1357	4612000	920000
RPOWER	26-Nov-15	52.5	CE	1.1	483	1644000	828000
RPOWER	26-Nov-15	60	CE	0.2	350	2412000	828000

STOCK OPTIONS WITH HIGHEST REDUCTION IN OPEN INTEREST							
Symbol	Expiry	Strike	Option Type	Settl. Price	Volume	Open Int.	Change in OI
ASHOKLEY	26-Nov-15	90	PE	4	707	2394000	-770000
ICICIBANK	26-Nov-15	300	CE	2.3	1175	3665200	-394400
ICICIBANK	26-Nov-15	280	CE	8.5	1514	2806700	-292400
RCOM	26-Nov-15	80	CE	5.25	360	2664000	-240000
PNB	26-Nov-15	120	PE	2.05	116	588000	-228000
IFCI	26-Nov-15	35	CE	0.1	107	3880000	-200000
SAIL	26-Nov-15	37.5	PE	0.05	22	0	-198000
IDFC	26-Nov-15	60	CE	2.3	720	2851200	-171600
HINDALCO	26-Nov-15	85	CE	2.85	261	850000	-165000
ORIENTBANK	26-Nov-15	130	PE	1.7	138	462000	-144000

### Disclosure

- The Research Analysts and /or Ashika Stock Broking Limited do hereby certify that all the views expressed in this research report accurately reflect their views about the subject issuer(s) or securities. Moreover, they also certify the followings:-
- The Research Analyst or Ashika Stock Broking Limited or his/its Associates or his/its relative, has any financial interest in the subject company(ies) covered in this report. **No**
- The Research Analyst or Ashika Stock Broking Limited or his/its Associates or his/its relative, have actual/beneficial ownership of 1% or more in the subject company, at the end of the month immediately preceding the date of the publication of the research report. **No**
- The Research Analyst or Ashika Stock Broking Limited or his/its Associates or his/its relatives has any material conflict of interest at the time of publication of the research report. **No**
- The Research Analyst or Ashika Stock Broking Limited or his/its Associates have received compensation for investment banking or merchant banking or brokerage services or for product other than for investment banking or merchant banking or brokerage services from the companies covered in this report in the past 12 months. **No**
- The Research Analyst or Ashika Stock Broking Limited or his/its Associates have managed or co managed in the previous 12 months any private or public offering of securities for the company(ies) covered in this report. **No**
- The Research Analyst or Ashika Stock Broking Limited or his/its Associates have received any compensation or other benefits from the company(ies) covered in this report or any third party in connection with the Research Report. **No**
- The Research Analyst has served as an officer, director or employee of the company(ies) covered in the research report. **No**
- The Research Analyst or Ashika Stock Broking Limited has been engaged in Market making activity of the company(ies) covered in the research report. **No**

### Disclaimer

This report is for the personal information of the authorized recipient and does not construe to be any investment, legal or taxation advice to you. Ashika Stock Broking Ltd. is not soliciting any action based upon it. This report is not for public distribution and has been furnished to you solely for your information and should not be reproduced or redistributed to any other person in any form. The report is based upon information that we consider reliable, but we do not represent that it is accurate or complete, and it should not be relied upon such. Ashika Stock Broking Ltd. or any of its affiliates or employees shall not be in anyway responsible for any loss or damage that may arise to any person from any inadvertent error in the information contained in this report. Ashika Stock Broking Ltd., or any of its affiliates or employees do not provide, at any time, any express or implied warranty of any kind, regarding any matter pertaining to this report, including without limitation the implied warranties of merchantability, fitness for a particular purpose, and non-infringement. The recipients of this report should rely on their own investigations.