

## Technical Report

### Closing Brief

Amid a divergent trend among various index constituents, key benchmark indices registered small gains. The market breadth indicating the overall health of the market was positive.

### Technical Build up

- ❖ Bearish candle with decrease in volume.
- ❖ Buy crossover in oscillators.
- ❖ Upper band of Bollinger exist at 8034
- ❖ Crucial moving average of 20/50 SMA are at 7823 and 8130
- ❖ 200 SMA trend deciding level exist at 8381

### Outlook for the day

Indian equity market declined marginally on account of profit booking after a rally of over 2% in the last two consecutive days and long weekend. On the technical front Nifty formed bullish candle in weekly chart with low hair line indicating positive momentum buildup. However it needs to be considered that the Index still continues to remain confined within the broader range of 7650-8050, a decisive close above or below it would dictate the trend in the market so aggressive long position needs to be avoided. On the F&O front increase in OI was seen but lack of movement in Index indicating lack of conviction from the traders to carry position before the long weekend. Basis and CoC decreased compared to the previous day. IndiaVIX too decreased close to 2% decline. On the option front call writing were seen in higher strike price call option of 8100 & 8400 while put writing were seen in 7800 & 8000 strike prices. Overall it seems that a neutral outlook can be drawn from the set data and is likely to remain within a narrow range.

### Technical & Derivative Report

| World Indices | LTP   | Daily Ch(Pts) | Daily Ch(%) |
|---------------|-------|---------------|-------------|
| Dow Jones     | 16472 | 200           | 1.23        |
| Nasdaq        | 4707  | 80            | 1.74        |
| S&P 500       | 1951  | 27            | 1.43        |
| FTSE 100      | 6129  | 57            | 0.95        |
| DAX           | 9553  | 43            | 0.46        |
| Hang Seng     | 21954 | 448           | 2.09        |
| Nikkei        | 17928 | 203           | 1.14        |
| Sensex        | 26220 | 66            | 0.25        |
| Nifty         | 7950  | 2             | 0.03        |

| Commodity /Forex     | LTP     | Daily Ch(Pts) | Daily Ch(%) |
|----------------------|---------|---------------|-------------|
| Gold (\$/Oz)         | 1136.60 | 22.90         | 2.06        |
| Silver (\$/Oz)       | 15.24   | -0.03         | -0.18       |
| Copper(USD/lb.)      | 232.55  | 2.10          | 0.91        |
| Brent Crude(USD/bbl) | 48.13   | 0.44          | 0.92        |
| USD/INR              | 65.51   | -0.07         | -0.12       |
| USD/YEN              | 119.91  | -0.02         | -0.02       |
| USD/EUR              | 1.1216  | 0.0021        | 0.19        |

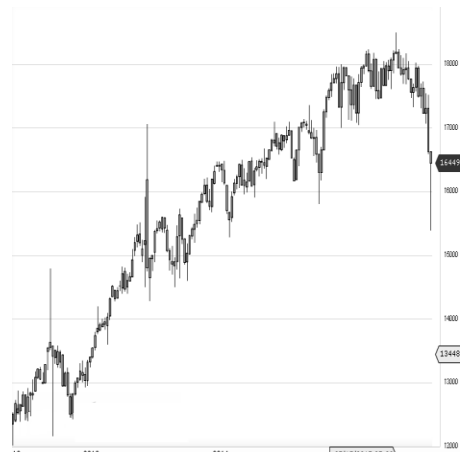
#### Support/Resistance levels for Indian Equity Indices

|             | S1    | S2    | CMP   | R1    | R2    |
|-------------|-------|-------|-------|-------|-------|
| Sensex      | 25070 | 25955 | 26220 | 26385 | 26520 |
| Nifty       | 7905  | 7870  | 7950  | 8000  | 8040  |
| Nifty (Fut) | 7930  | 7895  | 7976  | 8025  | 8065  |

#### Pivot Level

|        |       |
|--------|-------|
| Sensex | 26273 |
| Nifty  | 7963  |

**US:** US market closed more than 1 percent higher Friday, recovering from an initial decline of more than 1.5 percent, as investors digested higher oil prices and a weaker-than-expected jobs report. Technically DJIA is presently trading at the 5th leg through Elliot wave count with negative divergence in oscillators.



#### Increase in OI with Increase in Price (Long Buildup)

| Symbol   | Prev OI | Curr OI | OI Chg (%) | Curr Pr. | Pr.Chg (%) |
|----------|---------|---------|------------|----------|------------|
| INFRATE  |         |         |            |          |            |
| L        | 584     | 855     | 46.4       | 397.25   | 11.10      |
| CADILA   |         |         |            |          |            |
| HC       | 461     | 636     | 38         | 2115     | 0.40       |
| HEROM    |         |         |            |          |            |
| OTOCO    | 8100    | 8854    | 9.3        | 2443.15  | 1.7        |
| PIDILITI |         |         |            |          |            |
| ND       | 1122    | 1192    | 6.2        | 583.05   | 2.00       |
| ACC      | 8064    | 8467    | 5          | 1364.15  | 1.00       |

#### Increase in OI with Decrease in Price (Short Buildup)

| Symbol | Prev OI | Curr OI | OI Chg (%) | Curr Pr. | Pr.Chg (%) |
|--------|---------|---------|------------|----------|------------|
| ALBK   | 3672    | 4024    | 9.6        | 75.5     | -2.2       |
| CIPLA  | 18209   | 19911   | 9.4        | 637.9    | -0.4       |
| HCLTEC |         |         |            |          |            |
| H      | 29620   | 31577   | 6.6        | 861.0    | -12.5      |
| TATACO |         |         |            |          |            |
| MM     | 6314    | 6645    | 5.2        | 404.2    | -2.9       |
| AMTEKA |         |         |            |          |            |
| UTO    | 2628    | 2695    | 2.6        | 42.65    | -3.6       |

Nifty gained by 0.03% with Nifty future added 5.7 lakh shares in open interest and stock future added 67.0 lakh shares in open interest.

- Nifty PCR decreased to 0.91 from 0.92
- Total Nifty Calls added 16.9 lakh shares in open interest.
- Total Nifty Puts added 8.1 lakh shares in open interest.
- Maximum open interest (Nifty) in Calls for Oct. series is at 8300 and 7500 put.
- FII's bought net Rs.48.6 (provisional), while DIIs sold net Rs.152.18 Cr in cash market.
- FII sold net Rs.835.84 Cr. In F&O
- Securities in Ban Period: NIL

## Nifty Tracker

| PARTICULARS         | 01/10/2015 | 30/09/2015 | 29/09/2015 | 28/09/2015 |
|---------------------|------------|------------|------------|------------|
| Spot                | 7950.9     | 7948.9     | 7948.9     | 7843.3     |
| % Change in Spot    | 0.03%      | 0.00%      | 1.35%      | 0.61%      |
| Nifty(FUT) Oct      | 7976.95    | 7980.35    | 7980.35    | 7875.85    |
| Nifty(FUT) Oct Vol. | 469650     | 533627     | 533627     | 925370     |
| Nifty(FUT) Oct - OI | 19092875   | 18653575   | 18653575   | 18824900   |
| Nifty(FUT) Nov      | 8013.4     | 8015.4     | 8015.4     | 7914       |
| Nifty(FUT) Nov Vol. | 4856       | 4508       | 4508       | 7826       |
| Nifty(FUT) Nov - OI | 1080600    | 988050     | 988050     | 901950     |

## Trade Statistics for 01/10/2015

| PARTICULARS            | NO. OF CONTRACTS | TURNOVER (RS. CR.) | PUT CALL RATIO |
|------------------------|------------------|--------------------|----------------|
| NSE Index Futures      | 6,25,738         | 16242              | -              |
| NSE Stock Futures      | 8,48,187         | 22431              | -              |
| NSE Index Options      | 49,86,565        | 1,09,884.87        | -              |
| NSE Stock Options      | 3,77,079         | 9875               | 0.51           |
| NSE F&O Total Turnover | 68,37,569        | 158,433            | 0.92           |
| NSE Cash Turnover      | -                | 17402              | -              |
| BSE Cash Turnover      | -                | 2,937.39           | -              |
| Total Turnover         | -                | 178772             | -              |

## FII Corner (F&O)

| FII NET BUYING/SELLING & CHANGE IN OPEN INTEREST (Cr. Rupee) |                     |                         |                     |                         |                     |                         |
|--|---------------------|-------------------------|---------------------|-------------------------|---------------------|-------------------------|
| PARTICULARS  | 01/10/2015          |                         | 30/09/2015          |                         | 29/09/2015          |                         |
|  | Net Buying /Selling | Change In Open interest | Net Buying /Selling | Change In Open interest | Net Buying /Selling | Change In Open interest |
| Index Future   | 964                 | 363                     | -145                | 277                     | -519                | 540                     |
| Index option   | 23                  | -729                    | -120                | 1506                    | 3615                | 5070                    |
| Stock Future   | -131                | 351                     | -111                | 1301                    | 135                 | 990                     |
| Stock option   | -20                 | 239                     | 78                  | 253                     | 16                  | 270                     |
| Total  | 836                 | 224                     | -298                | 3338                    | 3247                | 6871                    |

## Market Open Interest

| ADDITION/REDUCTION IN MARKET OPEN INTEREST |            |            |            |            |            |
|--|------------|------------|------------|------------|------------|
| Contracts                                  | 01/10/2015 | 30/09/2015 | 29/09/2015 | 28/09/2015 | 24/09/2015 |
| Index Futures                              | 361        | 262        | 1058       | -11309     | 513        |
| Index Options                              | -117       | 1894       | 1575       | -12227     | 1831       |
| Stock Futures                              | 2406       | 2151       | 7828       | -68911     | 8979       |
| Stock Options                              | 350        | 1312       | 1417       | -10183     | 864        |
| F&O Total                                  | 3000       | 5619       | 11877.7    | -102630.22 | 12187.18   |

## Nifty Option Open Interest Statistics

| NIFTY OPTIONS HIGHEST ADDITION IN OPEN INTEREST |        |             |                  |        |               |              |
|---|--------|-------------|------------------|--------|---------------|--------------|
| Expiry  | Strike | Option Type | Settlement Price | Volume | Open Interest | Change In OI |
| 29-Oct-15                                       | 8400   | CE          | 17.55            | 245365 | 2358175       | 463775       |
| 29-Oct-15                                       | 8100   | CE          | 91.25            | 426767 | 3227650       | 463550       |
| 29-Oct-15                                       | 8000   | PE          | 165.4            | 254171 | 1971850       | 301350       |
| 29-Oct-15                                       | 8200   | CE          | 55.65            | 446824 | 3974350       | 284500       |
| 29-Oct-15                                       | 7500   | PE          | 39.8             | 245381 | 4829475       | 279425       |
| 29-Oct-15                                       | 7800   | PE          | 96.05            | 352548 | 3888350       | 271350       |
| 29-Oct-15                                       | 8300   | CE          | 32.65            | 301343 | 4185400       | 263125       |
| 29-Oct-15                                       | 8200   | PE          | 273.8            | 29039  | 1082225       | 178800       |
| 29-Oct-15                                       | 8000   | CE          | 141.35           | 377660 | 4069925       | 156100       |
| 26-Nov-15                                       | 8300   | CE          | 87.05            | 5400   | 378075        | 138525       |

| NIFTY OPTIONS HIGHEST REDUCTION IN OPEN INTEREST |        |             |                  |        |               |              |
|--|--------|-------------|------------------|--------|---------------|--------------|
| Expiry   | Strike | Option Type | Settlement Price | Volume | Open Interest | Change In OI |
| 29-Oct-15  | 7400   | PE          | 29.45            | 172959 | 2891250       | -445450      |
| 29-Oct-15  | 7600   | PE          | 53.5             | 227999 | 2756025       | -291225      |
| 29-Oct-15  | 7700   | CE          | 342.25           | 14868  | 848425        | -107475      |
| 29-Oct-15  | 7800   | CE          | 268.45           | 40993  | 1565650       | -102425      |
| 29-Oct-15  | 7900   | CE          | 200.85           | 135678 | 2072400       | -100250      |
| 29-Oct-15  | 9000   | CE          | 1.35             | 17431  | 716700        | -95900       |
| 29-Oct-15  | 7300   | PE          | 21.15            | 84521  | 1474125       | -93050       |
| 29-Oct-15  | 7700   | PE          | 72.1             | 235045 | 2617200       | -67625       |
| 29-Oct-15  | 7500   | CE          | 507.3            | 6421   | 726325        | -65625       |
| 29-Oct-15  | 7600   | CE          | 423.45           | 5835   | 497325        | -65100       |

## Stock Option Open Interest Statistics

| STOCK OPTIONS WITH HIGHEST ADDITION IN OPEN INTEREST |           |        |             |              |        |               |              |
|--|-----------|--------|-------------|--------------|--------|---------------|--------------|
| Symbol   | Expiry    | Strike | Option Type | Settl. Price | Volume | Open Interest | Change in OI |
| IDFC   | 29-Oct-15 | 70     | CE          | 0.9          | 10719  | 4572000       | 4572000      |
| IDFC   | 29-Oct-15 | 75     | CE          | 0.45         | 8647   | 2800000       | 2800000      |
| IDFC   | 29-Oct-15 | 65     | CE          | 1.95         | 4217   | 2380000       | 2380000      |
| IDFC   | 29-Oct-15 | 80     | CE          | 0.25         | 4999   | 2108000       | 2108000      |
| IDFC   | 29-Oct-15 | 60     | PE          | 3.3          | 5325   | 1538000       | 1538000      |
| GMRINFRA   | 29-Oct-15 | 15     | CE          | 0.25         | 150    | 5070000       | 1183000      |
| IDFC   | 29-Oct-15 | 60     | CE          | 3.95         | 1199   | 1028000       | 1028000      |
| SBIN   | 29-Oct-15 | 250    | CE          | 4.4          | 3925   | 3450000       | 963000       |
| UNITECH  | 29-Oct-15 | 7.5    | CE          | 0.2          | 359    | 13805000      | 858000       |
| JPASSOCIAT   | 29-Oct-15 | 15     | CE          | 0.1          | 185    | 5456000       | 832000       |

| STOCK OPTIONS WITH HIGHEST REDUCTION IN OPEN INTEREST |           |        |             |              |        |           |              |
|---|-----------|--------|-------------|--------------|--------|-----------|--------------|
| Symbol  | Expiry    | Strike | Option Type | Settl. Price | Volume | Open Int. | Change in OI |
| ASHOKLEY  | 29-Oct-15 | 92.5   | CE          | 5.45         | 357    | 512000    | -296000      |
| RCOM  | 29-Oct-15 | 65     | CE          | 6.05         | 247    | 756000    | -292000      |
| NTPC  | 29-Oct-15 | 120    | PE          | 1.9          | 208    | 222000    | -210000      |
| ASHOKLEY  | 29-Oct-15 | 90     | CE          | 7.05         | 358    | 1576000   | -208000      |
| DLF   | 29-Oct-15 | 130    | PE          | 6.2          | 807    | 1036000   | -182000      |
| GMRINFRA  | 29-Oct-15 | 17.5   | CE          | 0.05         | 21     | 1469000   | -104000      |
| TV18BRDCST  | 29-Oct-15 | 35     | CE          | 1.6          | 51     | 493000    | -102000      |
| IDBI  | 29-Oct-15 | 77.5   | CE          | 6.15         | 60     | 336000    | -88000       |
| RCOM  | 29-Oct-15 | 67.5   | CE          | 4.55         | 195    | 280000    | -88000       |
| LT  | 29-Oct-15 | 1500   | CE          | 48.35        | 5663   | 208125    | -77250       |

#### Disclosure

- The Research Analysts and /or Ashika Stock Broking Limited do hereby certify that all the views expressed in this research report accurately reflect their views about the subject issuer(s) or securities. Moreover, they also certify the followings:-
- The Research Analyst or Ashika Stock Broking Limited or his/its Associates or his/its relative, has any financial interest in the subject company(ies) covered in this report. **No**
- The Research Analyst or Ashika Stock Broking Limited or his/its Associates or his/its relative, have actual/beneficial ownership of 1% or more in the subject company, at the end of the month immediately preceding the date of the publication of the research report. **No**
- The Research Analyst or Ashika Stock Broking Limited or his/its Associates or his/its relatives has any material conflict of interest at the time of publication of the research report. **No**
- The Research Analyst or Ashika Stock Broking Limited or his/its Associates have received compensation for investment banking or merchant banking or brokerage services or for product other than for investment banking or merchant banking or brokerage services from the companies covered in this report in the past 12 months. **No**
- The Research Analyst or Ashika Stock Broking Limited or his/its Associates have managed or co managed in the previous 12 months any private or public offering of securities for the company(ies) covered in this report. **No**
- The Research Analyst or Ashika Stock Broking Limited or his/its Associates have received any compensation or other benefits from the company(ies) covered in this report or any third party in connection with the Research Report. **No**
- The Research Analyst has served as an officer, director or employee of the company(ies) covered in the research report. **No**
- The Research Analyst or Ashika Stock Broking Limited has been engaged in Market making activity of the company(ies) covered in the research report. **No**

#### Disclaimer

This report is for the personal information of the authorized recipient and does not construe to be any investment, legal or taxation advice to you. Ashika Stock Broking Ltd. is not soliciting any action based upon it. This report is not for public distribution and has been furnished to you solely for your information and should not be reproduced or redistributed to any other person in any form. The report is based upon information that we consider reliable, but we do not represent that it is accurate or complete, and it should not be relied upon such. Ashika Stock Broking Ltd. or any of its affiliates or employees shall not be in anyway responsible for any loss or damage that may arise to any person from any inadvertent error in the information contained in this report. Ashika Stock Broking Ltd., or any of its affiliates or employees do not provide, at any time, any express or implied warranty of any kind, regarding any matter pertaining to this report, including without limitation the implied warranties of merchantability, fitness for a particular purpose, and non-infringement. The recipients of this report should rely on their own investigations.