

Technical Report

Closing Brief

Gains in index heavyweight ITC and oil and pharma sector stocks aided modest gains for key benchmark indices. The Sensex failed to retain the psychological 27,000 mark after surpassing that mark in intraday trade.

Technical Build up

- ❖ Bullish candle with increase in volume.
- ❖ Buy crossover in oscillators.
- ❖ Upper band of Bollinger exist at 8134
- ❖ Crucial moving average of 20/50 SMA are at 7859 and 8111
- ❖ 200 SMA trend deciding level exist at 8381

Outlook for the day

Indian equity market ended the session on a higher note hence managing the day with fifth consecutive day of gain. Sentiments were upbeat in response to strong global cues, while later market gained strength after Finance minister and the Prime minister, shared view on growth rate and rollout of major reforms like GST. On the technical front Nifty formed yet another bullish candle with increase in volume slowly approaching to fill the gap created in the month of August. however it need to be considered that that the Index still continues to remain confined within the broader range of 7650-8225 (the previous gap create the previous month), a decisive close above or below it would dictate the trend in the market. Further price action the previous month has led to form Inverted Head & Shoulder in daily chart. In order for the pattern to materialize the Index need to sustain above the neckline of 8050 as now the previous resistance should act as important support zone as per role reversal technique. On the F&O front no meaningfully change were witnessed in OI front for the Index future contract, premium and CoC decreased compared to the previous day. Indian VIX increased marginally. On the option front call writers seems to have shifted base towards the 8400 & 8500 strike prices while put writers become active in 8000 & 8100 strike price. Hence to sum up positive bias in the market is likely to remain.



Increase in OI with Increase in Price (Long Buildup)					
Symbol	Prev OI	Curr OI	OI Chg (%)	Curr Pr.	Pr.Chg (%)
BEML	172	281	63.4	1288.5	2.5
CESC	3428	4369	27.5	558.9	5.10
AMTEKA					
UTO	2763	3388	22.6	46.15	9.6
IBREALE					
ST	5375	6259	16.5	70.70	7.70
SOUTHB					
ANK	1462	1694	15.9	22.85	0.40

Increase in OI with Decrease in Price (Short Buildup)					
Symbol	Prev OI	Curr OI	OI Chg (%)	Curr Pr.	Pr.Chg (%)
CADILA					
HC	163.20	796.0	387.8	427.5	-79.6
ACC	8539	10346	21.2	1350.5	-1.8
NMDC	4903	5466	11.5	94.55	-0.7
BHEL	20750	22119	6.6	198.6	-3.0
AUROP					
HARMA	27089	28671	5.8	755.85	-1.6

Technical & Derivative Report

World Indices	LTP	Daily Ch(Pts)	Daily Ch(%)
Dow Jones	16790	13	0.08
Nasdaq	4748	-32	-0.69
S&P 500	1979	-7	-0.36
FTSE 100	6326	27	0.43
DAX	9902	88	0.90
Hang Seng	21869	37	0.17
Nikkei	18180	-5	-0.06
Sensex	26932	147	0.55
Nifty	8152	33	0.41

Commodity /Forex	LTP	Daily Ch(Pts)	Daily Ch(%)
Gold (\$/Oz)	1147.10	0.70	0.06
Silver (\$/Oz)	15.93	-0.06	-0.37
Copper(USD/lb.)	236.05	0.55	0.23
Brent Crude(USD/bbl)	52.07	0.15	0.29
USD/INR	65.41	0.11	0.17
USD/YEN	120.30	0.07	0.06
USD/EUR	1.1264	-0.0008	-0.07

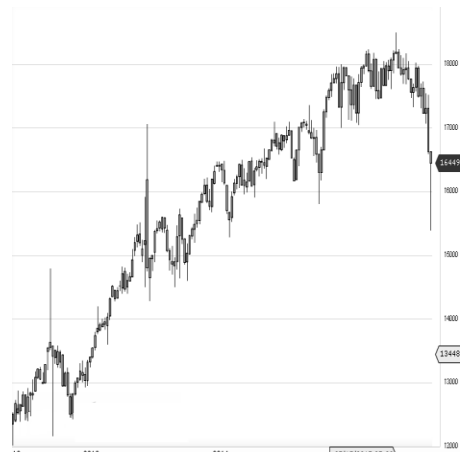
Support/Resistance levels for Indian Equity Indices

	S1	S2	CMP	R1	R2
Sensex	26760	26625	26932	27025	27125
Nifty	8100	8060	8152	8180	8210
Nifty (Fut)	8110	8070	8160	8190	8220

Pivot Level

Sensex	26898
Nifty	8143

US: US market closed mixed Tuesday, stabilizing after a sharp two-day rally, as investors awaited the official beginning of the third-quarter earnings season. Technically DJIA is presently trading at the 5th leg through Elliot wave count with negative divergence in oscillators.



Nifty gained by 0.41% with Nifty future added 0.7 lakh shares in open interest and stock future added 253.0 lakh shares in open interest.

- Nifty PCR increased to 0.99 from 0.96
- Total Nifty Calls added 11.6 lakh shares in open interest.
- Total Nifty Puts added 25.6 lakh shares in open interest.
- Maximum open interest (Nifty) in Calls for Oct. series is at 8300 and 7800 put.
- FII's bought net Rs.480.24 (provisional), while DIIs sold net Rs.424.6 Cr in cash market.
- FII bought net Rs.1198.68 Cr. In F&O
- Securities in Ban Period: NIL

Nifty Tracker

PARTICULARS	06/10/2015	05/10/2015	01/10/2015	30/09/2015
Spot	8152.9	8119.3	7950.9	7948.9
% Change in Spot	0.41%	2.12%	0.03%	0.00%
Nifty(FUT) Oct	8160.55	8132.8	7976.95	7980.35
Nifty(FUT) Oct Vol.	443158	476060	469650	533627
Nifty(FUT) Oct - OI	20319875	20337625	19092875	18653575
Nifty(FUT) Nov	8197.95	8170.4	8013.4	8015.4
Nifty(FUT) Nov Vol.	6023	5688	4856	4508
Nifty(FUT) Nov - OI	1200975	1174875	1080600	988050

Trade Statistics for 06/10/2015

PARTICULARS	NO. OF CONTRACTS	TURNOVER (RS. CR.)	PUT CALL RATIO
NSE Index Futures	6,07,440	16435	-
NSE Stock Futures	8,59,993	23308	-
NSE Index Options	54,23,840	1,22,977.37	-
NSE Stock Options	3,97,627	10457	0.48
NSE F&O Total Turnover	72,88,900	173,177	0.97
NSE Cash Turnover	-	18400	-
BSE Cash Turnover	-	3,357.34	-
Total Turnover	-	194935	-

FII Corner (F&O)

FII NET BUYING/SELLING & CHANGE IN OPEN INTEREST (Cr. Rupee)						
PARTICULARS	06/10/2015		05/10/2015		01/10/2015	
	Net Buying /Selling	Change In Open interest	Net Buying /Selling	Change In Open interest	Net Buying /Selling	Change In Open interest
Index Future	251	333	1627	2659	964	363
Index option	468	2018	482	1981	23	-729
Stock Future	462	171	671	1160	-131	351
Stock option	17	245	57	508	-20	239
Total	1198	2768	2837	6308	836	224

Market Open Interest

ADDITION/REDUCTION IN MARKET OPEN INTEREST					
Contracts	06/10/2015	05/10/2015	01/10/2015	30/09/2015	29/09/2015
Index Futures	-120	1434	361	262	1058
Index Options	412	1223	-117	1894	1575
Stock Futures	3286	3437	2406	2151	7828
Stock Options	978	980	350	1312	1417
F&O Total	4555	7073	2999.63	5618.94	11877.7

Nifty Option Open Interest Statistics

NIFTY OPTIONS HIGHEST ADDITION IN OPEN INTEREST						
Expiry	Strike	Option Type	Settlement Price	Volume	Open Interest	Change In OI
29-Oct-15	8100	PE	121.1	381905	3183475	1005500
29-Oct-15	7700	PE	34.9	212658	3472300	660300
29-Oct-15	8400	CE	39.6	346676	3163750	500275
29-Oct-15	8000	PE	90.75	466515	3700225	429650
29-Oct-15	8500	CE	19.1	371481	2986575	414325
29-Oct-15	8200	PE	160	155267	1785525	364425
29-Oct-15	8700	CE	4.25	91016	1086300	271225
29-Oct-15	7800	PE	48.4	260392	4273775	185775
31-Dec-15	7700	PE	108.15	2544	215425	138750
26-Nov-15	8700	CE	37.9	3847	212700	135300

NIFTY OPTIONS HIGHEST REDUCTION IN OPEN INTEREST						
Expiry	Strike	Option Type	Settlement Price	Volume	Open Interest	Change In OI
29-Oct-15	7500	PE	18.7	195653	3781400	-303100
29-Oct-15	8000	CE	247.2	113211	3156000	-224725
29-Oct-15	8200	CE	118.3	464236	3923825	-180075
29-Oct-15	7200	PE	7.15	48643	1172575	-146850
29-Oct-15	7900	CE	323.6	30987	1600875	-117375
29-Oct-15	7600	PE	25.5	145411	2592275	-114475
29-Oct-15	7800	CE	403.1	15230	1362350	-86300
29-Oct-15	8100	CE	177	270975	3076925	-75850
26-Nov-15	7800	CE	481.75	969	465450	-48600
31-Dec-15	6500	PE	17.2	1229	641150	-46500

Stock Option Open Interest Statistics

STOCK OPTIONS WITH HIGHEST ADDITION IN OPEN INTEREST							
Symbol	Expiry	Strike	Option Type	Settl. Price	Volume	Open Interest	Change in OI
IFCI	29-Oct-15	20	PE	0.25	230	2584000	1056000
NMDC	29-Oct-15	100	CE	1.7	669	1048000	668000
ASHOKLEY	29-Oct-15	95	CE	4.1	899	3576000	624000
JPASSOCIAT	29-Oct-15	10	PE	0.25	281	5128000	528000
UNITECH	29-Oct-15	7.5	CE	0.25	106	16060000	506000
RCOM	29-Oct-15	70	PE	2.65	308	1212000	480000
TATAMOTORS	29-Oct-15	320	PE	8.2	3749	675500	472000
NHPC	29-Oct-15	17.5	PE	0.5	52	1837000	451000
IBREALEST	29-Oct-15	75	CE	2.5	1138	788000	428000
JINDALSTEL	29-Oct-15	80	CE	2.7	1908	864000	410000

STOCK OPTIONS WITH HIGHEST REDUCTION IN OPEN INTEREST							
Symbol	Expiry	Strike	Option Type	Settl. Price	Volume	Open Int.	Change in OI
JINDALSTEL	29-Oct-15	65	CE	10.65	550	1022000	-302000
JINDALSTEL	29-Oct-15	70	CE	6.8	2940	1850000	-302000
HINDALCO	29-Oct-15	70	CE	6.45	268	398000	-272000
TATAMOTORS	29-Oct-15	320	CE	21.2	3508	965000	-269000
ICICIBANK	29-Oct-15	280	CE	10.9	1505	1990000	-204000
IBREALEST	29-Oct-15	65	CE	7.35	385	1244000	-200000
TATAMOTORS	29-Oct-15	280	PE	1.45	1090	468500	-163500
DLF	29-Oct-15	120	PE	2.3	359	1206000	-148000
ICICIBANK	29-Oct-15	300	CE	3.15	1683	2364000	-141000
JINDALSTEL	29-Oct-15	55	PE	0.25	128	328000	-140000

Disclosure

- The Research Analysts and /or Ashika Stock Broking Limited do hereby certify that all the views expressed in this research report accurately reflect their views about the subject issuer(s) or securities. Moreover, they also certify the followings:-
- The Research Analyst or Ashika Stock Broking Limited or his/its Associates or his/its relative, has any financial interest in the subject company(ies) covered in this report. **No**
- The Research Analyst or Ashika Stock Broking Limited or his/its Associates or his/its relative, have actual/beneficial ownership of 1% or more in the subject company, at the end of the month immediately preceding the date of the publication of the research report. **No**
- The Research Analyst or Ashika Stock Broking Limited or his/its Associates or his/its relatives has any material conflict of interest at the time of publication of the research report. **No**
- The Research Analyst or Ashika Stock Broking Limited or his/its Associates have received compensation for investment banking or merchant banking or brokerage services or for product other than for investment banking or merchant banking or brokerage services from the companies covered in this report in the past 12 months. **No**
- The Research Analyst or Ashika Stock Broking Limited or his/its Associates have managed or co managed in the previous 12 months any private or public offering of securities for the company(ies) covered in this report. **No**
- The Research Analyst or Ashika Stock Broking Limited or his/its Associates have received any compensation or other benefits from the company(ies) covered in this report or any third party in connection with the Research Report. **No**
- The Research Analyst has served as an officer, director or employee of the company(ies) covered in the research report. **No**
- The Research Analyst or Ashika Stock Broking Limited has been engaged in Market making activity of the company(ies) covered in the research report. **No**

Disclaimer

This report is for the personal information of the authorized recipient and does not construe to be any investment, legal or taxation advice to you. Ashika Stock Broking Ltd. is not soliciting any action based upon it. This report is not for public distribution and has been furnished to you solely for your information and should not be reproduced or redistributed to any other person in any form. The report is based upon information that we consider reliable, but we do not represent that it is accurate or complete, and it should not be relied upon such. Ashika Stock Broking Ltd. or any of its affiliates or employees shall not be in anyway responsible for any loss or damage that may arise to any person from any inadvertent error in the information contained in this report. Ashika Stock Broking Ltd., or any of its affiliates or employees do not provide, at any time, any express or implied warranty of any kind, regarding any matter pertaining to this report, including without limitation the implied warranties of merchantability, fitness for a particular purpose, and non-infringement. The recipients of this report should rely on their own investigations.