

# Technical Report

## Technical & Derivative Report

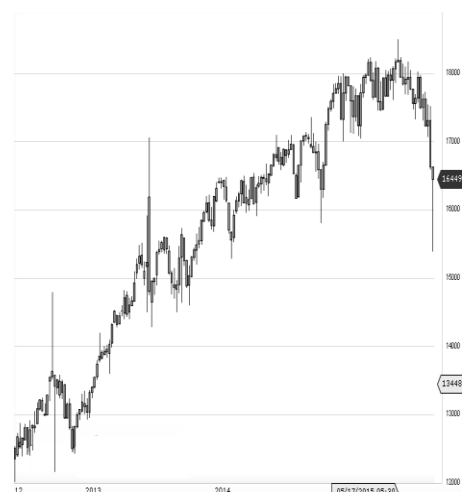
World Indices	LTP	Daily Ch(Pts)	Daily Ch(%)
Dow Jones	16102	-272	-1.66
Nasdaq	4683	-49	-1.05
S&P 500	1921	-29	-1.53
FTSE 100	6074	31	0.52
DAX	10108	70	0.70
Hang Seng	20690	106	0.52
Nikkei	17744	-116	-0.65
Sensex	24893	-308	-1.22
Nifty	7558	-96	-1.26

Commodity /Forex	LTP	Daily Ch(Pts)	Daily Ch(%)
Gold (\$/Oz)	1119.60	-1.80	-0.16
Silver (\$/Oz)	14.52	-0.03	-0.23
Copper(USD/lb.)	234.65	3.45	1.49
Brent Crude(USD/bbl)	48.03	0.40	0.84
USD/INR	66.82	0.36	0.54
USD/YEN	119.28	-	-
USD/EUR	1.1168	-0.0002	-0.02

Support/Resistance levels for Indian Equity Indices					
	S1	S2	CMP	R1	R2
Sensex	24830	24700	24893	25000	25200
Nifty	7540	7500	7558	7590	7650
Nifty (Fut)	7555	7515	7574	7605	7665

Pivot Level	
Sensex	25044
Nifty	7603

**US:** US market was closed the previous day on account of Labor Day, European market ended higher on Monday, bucking the trend set in Asia. Technically DJIA is presently trading at the 5th leg through Elliot wave count with negative divergence in oscillators.



## Closing Brief

Stocks from mining and banking sector led losses as key benchmark indices edged lower in choppy trade. The Sensex provisionally settled below the psychological 25,000 mark after extending losses in late trade. The barometer index hit its lowest level in more than 15 months.

## Technical Build up

- ❖ Bearish candle with decrease in volume.
- ❖ Sell crossover in oscillators.
- ❖ Lower band of Bollinger exist at 7442
- ❖ Crucial moving average of 20/50 SMA are at 8086 and 8328
- ❖ 200 SMA trend deciding level exist at 8430

## Outlook for the day

Indian equity market resumed prevailing negative bias and slipped further down. Better than estimated US job data has provided a clarity of the Fed's stance on interest rates. The weakening of rupee and fears of further devaluation of Yuan too has been dampening the market sentiments. On technical front since breach of upward rising trendline Nifty might have entered into bear domain however traders still remain hallucinated and are late in snapping off from the 1.5 year bull run. On the oscillator front oversold reading in daily chart and in weekly time frame too the indicator is fast approaching the same level, coupled with its positive divergence in daily chart might be the reason for traders to keep hunting for a meaningful support level. Further retracement level since August 2013 onward further indicates of presence of 38.2% retracement level at 7590, breach of which drag the Index further lower till 7120. On the F&O front fresh short position are being added with increase in OI followed by decrease in price. Indian VIX remained almost flat. On the option front long addition were seen for in-the-money put option of 7600 strike price while the same strike price call option witnessed writing activity. Overall negative bias is likely to prevail.



Increase in OI with Increase in Price (Long Buildup)					
Symbol	Prev OI	Curr OI	OI Chg (%)	Curr Pr.	Pr.Chg (%)
HAVELL S	3844	3954	2.9	257.0	0.50
HDFC	45524	46784	2.8	1154.0	0.70
PETRON ET	1376	1407	2.3	174.25	0.40
ADANIP OWER	17300	17445	0.8	21.0	0.20
SOUTHB ANK	1458	1465	0.5	20.15	1.80

Increase in OI with Decrease in Price (Short Buildup)					
Symbol	Prev OI	Curr OI	OI Chg (%)	Curr Pr.	Pr.Chg (%)
MOTHE RSUMI	7897	8674	9.8	278.15	-5.3
BEL	3271	3531	8	3156.95	-2.5
ADANIP ORTS	11548	12289	6.4	324.20	-4.8
STAR	7108	7510	5.7	1070.60	-6.8
SUNTV	20275	21158	4.4	371.0	-4.7

Nifty declined by 1.26% with Nifty future added 5.0 lakh shares in open interest and stock future added 34.6 lakh shares in open interest.

- Nifty PCR remained unchanged at 0.95
- Total Nifty Calls added 20.0 lakh shares in open interest.
- Total Nifty Puts added 14.6 lakh shares in open interest.
- Maximum open interest (Nifty) in Calls for Apr. series is at 8500 and 7500 put.
- FII's sold net Rs.826.92 (provisional), while DIIs bought net Rs.504.11 Cr in cash market.
- FII sold net Rs.1456.14 Cr. In F&O
- Securities in Ban Period: NIL

## Nifty Tracker

PARTICULARS	07/09/2015	04/09/2015	03/09/2015	02/09/2015
Spot	7558.8	7655.05	7823	7717
% Change in Spot	-1.26%	-2.15%	1.37%	-0.88%
Nifty(FUT) Sep	7574.5	7664.35	7842.55	7742.15
Nifty(FUT) Sep Vol.	548939	781099	491572	696245
Nifty(FUT) Sep - OI	23572825	23195250	22688775	22781175
Nifty(FUT) Oct	7612.6	7705.55	7883.8	7780.2
Nifty(FUT) Oct Vol.	27513	36013	18741	20826
Nifty(FUT) Oct - OI	1256100	1165600	1012775	1015400

## Trade Statistics for 07/09/2015

PARTICULARS	NO. OF CONTRACTS	TURNOVER (RS. CR.)	PUT CALL RATIO
NSE Index Futures	6,80,083	16996	-
NSE Stock Futures	7,68,138	19310	-
NSE Index Options	57,90,650	1,23,435.45	-
NSE Stock Options	3,50,071	9002	0.52
NSE F&O Total Turnover	75,88,942	168,744	0.85
NSE Cash Turnover	-	15060	-
BSE Cash Turnover	-	2,362.85	-
Total Turnover	-	186167	-

## FII Corner (F&O)

FII NET BUYING/SELLING & CHANGE IN OPEN INTEREST (Cr. Rupee)						
PARTICULARS	07/09/2015		04/09/2015		03/09/2015	
	Net Buying /Selling	Change In Open interest	Net Buying /Selling	Change In Open interest	Net Buying /Selling	Change In Open interest
Index Future	-1087	223	-356	-17	459	758
Index option	-610	1151	636	3824	268	6439
Stock Future	207	-573	490	-804	321	1107
Stock option	34	65	-44	69	-12	102
Total	-1456	867	726	3072	1036	8405

## Market Open Interest

ADDITION/REDUCTION IN MARKET OPEN INTEREST					
Contracts	07/09/2015	04/09/2015	03/09/2015	02/09/2015	01/09/2015
Index Futures	381	91	-221	1180	58
Index Options	-684	-1821	1021	410	-1861
Stock Futures	3129	5662	3965	5297	6448
Stock Options	460	433	503	717	1032
F&O Total	3286	4365	5267.7	7604.25	5676.72

## Nifty Option Open Interest Statistics

NIFTY OPTIONS HIGHEST ADDITION IN OPEN INTEREST						
Expiry	Strike	Option Type	Settlement Price	Volume	Open Interest	Change In OI
24-Sep-15	7600	CE	154.6	146977	1279425	510900
24-Sep-15	7900	CE	46.65	369695	2539550	397375
24-Sep-15	7200	PE	64.8	271598	3898475	371350
24-Sep-15	7600	PE	186.05	307566	3425100	338100
24-Sep-15	7700	CE	108.65	281450	1928900	295125
24-Sep-15	7500	PE	144.35	456833	4809000	292450
24-Sep-15	7400	PE	111.25	345224	3651550	279775
29-Oct-15	8000	CE	99.15	27683	603950	250075
29-Oct-15	7500	PE	223.85	33222	903075	198600
24-Sep-15	7800	CE	72.9	434326	2527575	193825

NIFTY OPTIONS HIGHEST REDUCTION IN OPEN INTEREST						
Expiry	Strike	Option Type	Settlement Price	Volume	Open Interest	Change In OI
29-Oct-15	9100	CE	7.35	34409	320725	-343400
24-Sep-15	7800	PE	299.15	134169	3980000	-275325
24-Sep-15	8300	CE	7.25	142629	2885250	-228750
24-Sep-15	8000	PE	452.4	33101	3982250	-144025
24-Sep-15	8000	CE	29.1	481521	3714750	-129675
24-Sep-15	7900	PE	369.25	39962	2155975	-118575
24-Sep-15	8400	CE	5.35	93567	2691150	-88200
24-Sep-15	8100	CE	17.7	293751	3223100	-83400
29-Oct-15	9200	CE	6.6	7239	134825	-79550
24-Sep-15	8500	CE	4.15	65593	4676375	-74050

## Stock Option Open Interest Statistics

STOCK OPTIONS WITH HIGHEST ADDITION IN OPEN INTEREST							
Symbol	Expiry	Strike	Option Type	Settl. Price	Volume	Open Interest	Change in OI
ASHOKLEY	24-Sep-15	90	CE	2	1851	4816000	920000
ASHOKLEY	24-Sep-15	85	CE	3.6	1096	1940000	708000
UNITECH	24-Sep-15	7.5	CE	0.15	173	10846000	660000
UNITECH	24-Sep-15	5	PE	0.2	182	3806000	517000
ICICIBANK	24-Sep-15	270	CE	4.25	1989	1515000	471000
IFCI	24-Sep-15	20	CE	0.45	141	3912000	456000
AMTEKAUTO	24-Sep-15	30	CE	4.5	822	838000	434000
ICICIBANK	24-Sep-15	260	CE	7.25	1883	912000	418000
NHPC	24-Sep-15	12.5	PE	0.05	35	605000	385000
ASHOKLEY	24-Sep-15	100	CE	0.6	962	6284000	348000

STOCK OPTIONS WITH HIGHEST REDUCTION IN OPEN INTEREST							
Symbol	Expiry	Strike	Option Type	Settl. Price	Volume	Open Int.	Change in OI
IDFC	24-Sep-15	150	CE	0.15	397	1304000	-272000
DLF	24-Sep-15	110	PE	6.55	1065	1312000	-248000
HINDALCO	24-Sep-15	80	CE	1.25	699	2356000	-232000
VEDL	24-Sep-15	95	CE	3.45	332	742000	-166000
RCOM	24-Sep-15	70	CE	0.45	196	1560000	-144000
SBIN	24-Sep-15	300	CE	0.25	477	2265000	-144000
ICICIBANK	24-Sep-15	320	CE	0.35	404	932000	-136000
DLF	24-Sep-15	110	CE	9.25	208	638000	-124000
ASHOKLEY	24-Sep-15	90	PE	9.7	136	1104000	-104000
DLF	24-Sep-15	140	CE	1.1	427	1100000	-102000

#### Disclosure

- The Research Analysts and /or Ashika Stock Broking Limited do hereby certify that all the views expressed in this research report accurately reflect their views about the subject issuer(s) or securities. Moreover, they also certify the followings:-
- The Research Analyst or Ashika Stock Broking Limited or his/its Associates or his/its relative, has any financial interest in the subject company(ies) covered in this report. **No**
- The Research Analyst or Ashika Stock Broking Limited or his/its Associates or his/its relative, have actual/beneficial ownership of 1% or more in the subject company, at the end of the month immediately preceding the date of the publication of the research report. **No**
- The Research Analyst or Ashika Stock Broking Limited or his/its Associates or his/its relatives has any material conflict of interest at the time of publication of the research report. **No**
- The Research Analyst or Ashika Stock Broking Limited or his/its Associates have received compensation for investment banking or merchant banking or brokerage services or for product other than for investment banking or merchant banking or brokerage services from the companies covered in this report in the past 12 months. **No**
- The Research Analyst or Ashika Stock Broking Limited or his/its Associates have managed or co managed in the previous 12 months any private or public offering of securities for the company(ies) covered in this report. **No**
- The Research Analyst or Ashika Stock Broking Limited or his/its Associates have received any compensation or other benefits from the company(ies) covered in this report or any third party in connection with the Research Report. **No**
- The Research Analyst has served as an officer, director or employee of the company(ies) covered in the research report. **No**
- The Research Analyst or Ashika Stock Broking Limited has been engaged in Market making activity of the company(ies) covered in the research report. **No**

#### Disclaimer

This report is for the personal information of the authorized recipient and does not construe to be any investment, legal or taxation advice to you. Ashika Stock Broking Ltd. is not soliciting any action based upon it. This report is not for public distribution and has been furnished to you solely for your information and should not be reproduced or redistributed to any other person in any form. The report is based upon information that we consider reliable, but we do not represent that it is accurate or complete, and it should not be relied upon such. Ashika Stock Broking Ltd. or any of its affiliates or employees shall not be in anyway responsible for any loss or damage that may arise to any person from any inadvertent error in the information contained in this report. Ashika Stock Broking Ltd., or any of its affiliates or employees do not provide, at any time, any express or implied warranty of any kind, regarding any matter pertaining to this report, including without limitation the implied warranties of merchantability, fitness for a particular purpose, and non-infringement. The recipients of this report should rely on their own investigations.