

Technical Report

Technical & Derivative Report

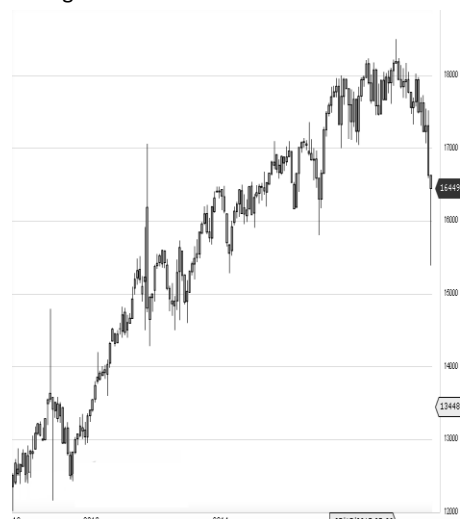
| World Indices | LTP | Daily Ch(Pts) | Daily Ch(%) |
|---------------|-------|---------------|-------------|
| Dow Jones | 16912 | 122 | 0.73 |
| Nasdaq | 4791 | 42 | 0.90 |
| S&P 500 | 1995 | 15 | 0.80 |
| FTSE 100 | 6336 | 10 | 0.16 |
| DAX | 9970 | 67 | 0.68 |
| Hang Seng | 22314 | -201 | -0.89 |
| Nikkei | 18290 | -32 | -0.18 |
| Sensex | 27035 | 102 | 0.38 |
| Nifty | 8177 | 24 | 0.30 |

| Commodity /Forex | LTP | Daily Ch(Pts) | Daily Ch(%) |
|----------------------|---------|---------------|-------------|
| Gold (\$/Oz) | 1144.20 | -4.50 | -0.39 |
| Silver (\$/Oz) | 15.98 | -0.11 | -0.71 |
| Copper(USD/lb.) | 236.30 | -0.40 | -0.17 |
| Brent Crude(USD/bbl) | 51.81 | 0.48 | 0.94 |
| USD/INR | 64.96 | -0.45 | -0.69 |
| USD/YEN | 120.04 | 0.03 | 0.02 |
| USD/EUR | 1.1241 | 0.0004 | 0.04 |

| Support/Resistance levels for Indian Equity Indices | | | | | |
|---|-------|-------|-------|-------|-------|
| | S1 | S2 | CMP | R1 | R2 |
| Sensex | 26910 | 26745 | 27035 | 27145 | 27310 |
| Nifty | 8140 | 8090 | 8177 | 8210 | 8260 |
| Nifty (Fut) | 8160 | 8110 | 8194 | 8230 | 8280 |

| Pivot Level | |
|-------------|-------|
| Sensex | 26998 |
| Nifty | 8166 |

US: US market closed higher Wednesday, helped by a recovery in health care stocks and gains in energy, as investors awaited the beginning of earnings season. Technically DJIA is presently trading at the 5th leg through Elliot wave count with negative divergence in oscillators.



Closing Brief

Gains in metal and mining sector companies, oil exploration and production (E&P) firms and index heavyweights ITC and HDFC aided decent gains for the barometer index. The market breadth indicating the overall health of the market was strong.

Technical Build up

- ❖ Bullish candle with increase in volume.
- ❖ Buy crossover in oscillators.
- ❖ Upper band of Bollinger exist at 8178
- ❖ Crucial moving average of 20/50 SMA are at 7885 and 8104
- ❖ 200 SMA trend deciding level exist at 8382

Outlook for the day

Indian equity market consolidated for second day in a row and closed marginally in green. a decent recovery in FMCG and Metal Counters helped the Index to witness gain nearly 4% gain for the last six consecutive day. On the technical front Nifty formed yet another bullish candle with increase in volume slowly approaching to fill the gap created in the month of August. however it need to be considered that that the Index still continues to remain confined within the broader range of 7650-8225 (the previous gap create the previous month), a decisive close above or below it would dictate the trend in the market. Further price action the previous month has led to form Inverted Head & Shoulder in daily chart. In order for the pattern to materialize the Index need to sustain above the neckline of 8050 as now the previous resistance should act as important support zone as per role reversal technique. On the F&O front Index future witnessed rise in OI followed by increase in price indicating long buildup, premium and CoC too increased compared to the previous day. Indian VIX saw marginal increment. On the option front put writers became active for 7900 & 8000 strike prices and at the same time higher strike price call option of 8300 & 8400 too witnessed the same. Hence it seems that another day on price consolidation is likely to be seen in the market.



| Increase in OI with Increase in Price (Long Buildup) | | | | | |
|--|---------|---------|------------|----------|------------|
| Symbol | Prev OI | Curr OI | OI Chg (%) | Curr Pr. | Pr.Chg (%) |
| NMDC | 5387 | 6686 | 24.1 | 95.1 | 0.70 |
| ARVIND | 3539 | 4041 | 14.2 | 288.5 | 1.20 |
| TVSMO | | | | | |
| TOR | 4690 | 5275 | 12.5 | 241.2 | 5.7 |
| RCOM | 10113 | 11361 | 12.3 | 75.85 | 5.20 |
| UNITEC | | | | | |
| H | 15150 | 16551 | 9.3 | 7.25 | 14.20 |

| Increase in OI with Decrease in Price (Short Buildup) | | | | | |
|---|---------|---------|------------|----------|------------|
| Symbol | Prev OI | Curr OI | OI Chg (%) | Curr Pr. | Pr.Chg (%) |
| INDIAEC | | | | | |
| M | 4155 | 5491 | 32.2 | 77.7 | -6.0 |
| HCLTEC | | | | | |
| H | 32351 | 39329 | 21.6 | 821.3 | -3.8 |
| JUBLFO | | | | | |
| OD | 7494 | 8251 | 10.1 | 1590 | -5.1 |
| INFY | 51168 | 55858 | 9.2 | 1137.5 | -1.2 |
| AXISBA | | | | | |
| NK | 65095 | 70422 | 8.2 | 500.7 | -1.6 |

Nifty gained by 0.30% with Nifty future added 10.9 lakh shares in open interest and stock future added 608.6 lakh shares in open interest.

- Nifty PCR increased to 1.03 from 0.99
- Total Nifty Calls added 3.0 lakh shares in open interest.
- Total Nifty Puts added 27.1 lakh shares in open interest.
- Maximum open interest (Nifty) in Calls for Oct. series is at 8300 and 7800 put.
- FII's sold net Rs.50.6 (provisional), while DIIs sold net Rs.218.75 Cr in cash market.
- FII bought net Rs.342.13 Cr. In F&O
- Securities in Ban Period: NIL

Nifty Tracker

| PARTICULARS | 07/10/2015 | 06/10/2015 | 05/10/2015 | 01/10/2015 |
|---------------------|------------|------------|------------|------------|
| Spot | 8177.4 | 8152.9 | 8119.3 | 7950.9 |
| % Change in Spot | 0.30% | 0.41% | 2.12% | 0.03% |
| Nifty(FUT) Oct | 8194.65 | 8160.55 | 8132.8 | 7976.95 |
| Nifty(FUT) Oct Vol. | 440596 | 443158 | 476060 | 469650 |
| Nifty(FUT) Oct - OI | 21209000 | 20319875 | 20337625 | 19092875 |
| Nifty(FUT) Nov | 8234.1 | 8197.95 | 8170.4 | 8013.4 |
| Nifty(FUT) Nov Vol. | 5666 | 6023 | 5688 | 4856 |
| Nifty(FUT) Nov - OI | 1266750 | 1200975 | 1174875 | 1080600 |

Trade Statistics for 07/10/2015

| PARTICULARS | NO. OF CONTRACTS | TURNOVER (RS. CR.) | PUT CALL RATIO |
|------------------------|------------------|--------------------|----------------|
| NSE Index Futures | 5,79,293 | 15304 | - |
| NSE Stock Futures | 9,09,902 | 24091 | - |
| NSE Index Options | 49,62,365 | 1,12,738.38 | - |
| NSE Stock Options | 4,76,537 | 12285 | 0.48 |
| NSE F&O Total Turnover | 69,28,097 | 164,419 | 0.89 |
| NSE Cash Turnover | - | 17396 | - |
| BSE Cash Turnover | - | 3,250.25 | - |
| Total Turnover | - | 185066 | - |

FII Corner (F&O)

| FII NET BUYING/SELLING & CHANGE IN OPEN INTEREST (Cr. Rupee) | | | | | | |
|--|---------------------|-------------------------|---------------------|-------------------------|---------------------|-------------------------|
| PARTICULARS | 07/10/2015 | | 06/10/2015 | | 05/10/2015 | |
| | Net Buying /Selling | Change In Open interest | Net Buying /Selling | Change In Open interest | Net Buying /Selling | Change In Open interest |
| Index Future | 1140 | 1380 | 251 | 333 | 1627 | 2659 |
| Index option | -215 | 1064 | 468 | 2018 | 482 | 1981 |
| Stock Future | -463 | 347 | 462 | 171 | 671 | 1160 |
| Stock option | -120 | 332 | 17 | 245 | 57 | 508 |
| Total | 342 | 3123 | 1198 | 2768 | 2837 | 6308 |

Market Open Interest

| ADDITION/REDUCTION IN MARKET OPEN INTEREST | | | | | |
|--|------------|------------|------------|------------|------------|
| Contracts | 07/10/2015 | 06/10/2015 | 05/10/2015 | 01/10/2015 | 30/09/2015 |
| Index Futures | 1082 | -120 | 1434 | 361 | 262 |
| Index Options | 841 | 412 | 1223 | -117 | 1894 |
| Stock Futures | 2755 | 3286 | 3437 | 2406 | 2151 |
| Stock Options | 1184 | 978 | 980 | 350 | 1312 |
| F&O Total | 5862 | 4555 | 7073.44 | 2999.63 | 5618.94 |

Nifty Option Open Interest Statistics

| NIFTY OPTIONS HIGHEST ADDITION IN OPEN INTEREST | | | | | | |
|---|--------|-------------|------------------|--------|---------------|--------------|
| Expiry | Strike | Option Type | Settlement Price | Volume | Open Interest | Change In OI |
| 29-Oct-15 | 8100 | PE | 105.45 | 380926 | 3876575 | 693100 |
| 29-Oct-15 | 8200 | PE | 141.65 | 192873 | 2318000 | 532475 |
| 29-Oct-15 | 8000 | PE | 77.85 | 474409 | 4090000 | 389775 |
| 29-Oct-15 | 8600 | CE | 9.7 | 170971 | 2228075 | 206925 |
| 29-Oct-15 | 7900 | PE | 56.95 | 246053 | 3421750 | 199275 |
| 29-Oct-15 | 7800 | PE | 41.1 | 260181 | 4472375 | 198600 |
| 29-Oct-15 | 7600 | PE | 21.75 | 109580 | 2776625 | 184350 |
| 31-Dec-15 | 9000 | CE | 40.75 | 6913 | 2277025 | 168850 |
| 29-Oct-15 | 8300 | PE | 185.9 | 46539 | 906625 | 134300 |
| 31-Dec-15 | 7700 | PE | 101.6 | 2194 | 339700 | 124275 |

| NIFTY OPTIONS HIGHEST REDUCTION IN OPEN INTEREST | | | | | | |
|--|--------|-------------|------------------|--------|---------------|--------------|
| Expiry | Strike | Option Type | Settlement Price | Volume | Open Interest | Change In OI |
| 29-Oct-15 | 7700 | PE | 29.7 | 167946 | 2926600 | -545700 |
| 29-Oct-15 | 8100 | CE | 195.75 | 180729 | 2885050 | -191875 |
| 29-Oct-15 | 8200 | CE | 132.75 | 462105 | 3732675 | -191150 |
| 29-Oct-15 | 8400 | CE | 46 | 388366 | 3020950 | -142800 |
| 26-Nov-15 | 8300 | CE | 175.1 | 2453 | 290400 | -80475 |
| 29-Oct-15 | 8050 | CE | 230.05 | 2273 | 56200 | -41600 |
| 29-Oct-15 | 7100 | PE | 4.75 | 15850 | 704700 | -38225 |
| 29-Oct-15 | 8500 | PE | 319.85 | 10862 | 674500 | -37225 |
| 31-Dec-15 | 9500 | CE | 13.5 | 4778 | 986325 | -32700 |
| 26-Nov-15 | 7900 | CE | 436.35 | 1088 | 631650 | -30225 |

Stock Option Open Interest Statistics

| STOCK OPTIONS WITH HIGHEST ADDITION IN OPEN INTEREST | | | | | | | |
|--|-----------|--------|-------------|--------------|--------|---------------|--------------|
| Symbol | Expiry | Strike | Option Type | Settl. Price | Volume | Open Interest | Change in OI |
| JPASSOCIAT | 29-Oct-15 | 12.5 | PE | 0.7 | 812 | 3448000 | 2448000 |
| UNITECH | 29-Oct-15 | 10 | CE | 0.15 | 1008 | 6380000 | 2288000 |
| UNITECH | 26-Nov-15 | 10 | CE | 0.4 | 67 | 2464000 | 1694000 |
| SBIN | 29-Oct-15 | 270 | CE | 1.05 | 2992 | 4395000 | 1533000 |
| GMRINFRA | 29-Oct-15 | 15 | CE | 0.45 | 736 | 8385000 | 1469000 |
| UNITECH | 26-Nov-15 | 7.5 | CE | 1.05 | 57 | 4312000 | 1309000 |
| UNITECH | 29-Oct-15 | 12.5 | CE | 0.05 | 119 | 1364000 | 990000 |
| IFCI | 29-Oct-15 | 22.5 | PE | 1.1 | 144 | 2024000 | 904000 |
| IFCI | 29-Oct-15 | 22.5 | CE | 0.7 | 704 | 5064000 | 864000 |
| UNITECH | 26-Nov-15 | 12.5 | CE | 0.15 | 18 | 1078000 | 847000 |

| STOCK OPTIONS WITH HIGHEST REDUCTION IN OPEN INTEREST | | | | | | | |
|---|-----------|--------|-------------|--------------|--------|-----------|--------------|
| Symbol | Expiry | Strike | Option Type | Settl. Price | Volume | Open Int. | Change in OI |
| JPASSOCIAT | 29-Oct-15 | 12.5 | CE | 1.1 | 3616 | 16912000 | -1560000 |
| RCOM | 29-Oct-15 | 70 | CE | 7.85 | 808 | 2536000 | -760000 |
| VEDL | 29-Oct-15 | 90 | CE | 5.65 | 2919 | 1034000 | -656000 |
| HINDALCO | 29-Oct-15 | 75 | CE | 8.35 | 1537 | 1178000 | -636000 |
| RPOWER | 29-Oct-15 | 45 | CE | 3.05 | 516 | 1564000 | -396000 |
| UNITECH | 29-Oct-15 | 7.5 | CE | 0.6 | 3562 | 15664000 | -396000 |
| SBIN | 29-Oct-15 | 240 | CE | 10.7 | 2568 | 1893000 | -353000 |
| VEDL | 29-Oct-15 | 85 | CE | 8.5 | 735 | 292000 | -294000 |
| INDIACEM | 29-Oct-15 | 80 | PE | 4.9 | 232 | 428000 | -292000 |
| TATAMOTORS | 29-Oct-15 | 320 | CE | 26.2 | 1452 | 724500 | -240500 |

Disclosure

- The Research Analysts and /or Ashika Stock Broking Limited do hereby certify that all the views expressed in this research report accurately reflect their views about the subject issuer(s) or securities. Moreover, they also certify the followings:-
- The Research Analyst or Ashika Stock Broking Limited or his/its Associates or his/its relative, has any financial interest in the subject company(ies) covered in this report. **No**
- The Research Analyst or Ashika Stock Broking Limited or his/its Associates or his/its relative, have actual/beneficial ownership of 1% or more in the subject company, at the end of the month immediately preceding the date of the publication of the research report. **No**
- The Research Analyst or Ashika Stock Broking Limited or his/its Associates or his/its relatives has any material conflict of interest at the time of publication of the research report. **No**
- The Research Analyst or Ashika Stock Broking Limited or his/its Associates have received compensation for investment banking or merchant banking or brokerage services or for product other than for investment banking or merchant banking or brokerage services from the companies covered in this report in the past 12 months. **No**
- The Research Analyst or Ashika Stock Broking Limited or his/its Associates have managed or co managed in the previous 12 months any private or public offering of securities for the company(ies) covered in this report. **No**
- The Research Analyst or Ashika Stock Broking Limited or his/its Associates have received any compensation or other benefits from the company(ies) covered in this report or any third party in connection with the Research Report. **No**
- The Research Analyst has served as an officer, director or employee of the company(ies) covered in the research report. **No**
- The Research Analyst or Ashika Stock Broking Limited has been engaged in Market making activity of the company(ies) covered in the research report. **No**

Disclaimer

This report is for the personal information of the authorized recipient and does not construe to be any investment, legal or taxation advice to you. Ashika Stock Broking Ltd. is not soliciting any action based upon it. This report is not for public distribution and has been furnished to you solely for your information and should not be reproduced or redistributed to any other person in any form. The report is based upon information that we consider reliable, but we do not represent that it is accurate or complete, and it should not be relied upon such. Ashika Stock Broking Ltd. or any of its affiliates or employees shall not be in anyway responsible for any loss or damage that may arise to any person from any inadvertent error in the information contained in this report. Ashika Stock Broking Ltd., or any of its affiliates or employees do not provide, at any time, any express or implied warranty of any kind, regarding any matter pertaining to this report, including without limitation the implied warranties of merchantability, fitness for a particular purpose, and non-infringement. The recipients of this report should rely on their own investigations.