

Technical Report

Technical & Derivative Report

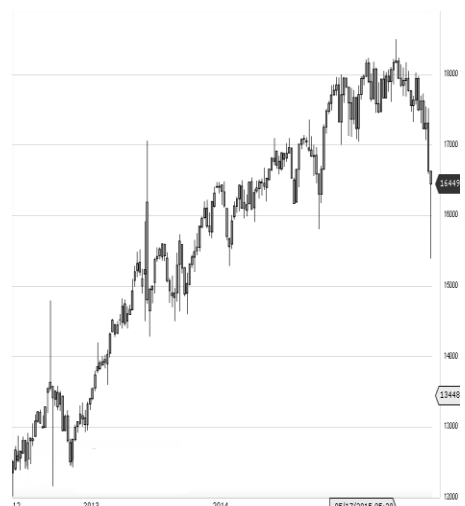
World Indices	LTP	Daily Ch(Pts)	Daily Ch(%)
Dow Jones	16492	390	2.42
Nasdaq	4811	128	2.73
S&P 500	1969	48	2.51
FTSE 100	6146	71	1.18
DAX	10271	162	1.61
Hang Seng	21693	434	2.04
Nikkei	18286	849	4.87
Sensex	25317	424	1.70
Nifty	7688	129	1.71

Commodity /Forex	LTP	Daily Ch(Pts)	Daily Ch(%)
Gold (\$/Oz)	1123.60	2.60	0.23
Silver (\$/Oz)	14.82	0.07	0.44
Copper(USD/lb.)	243.10	-0.30	-0.12
Brent Crude(USD/bbl)	49.51	-0.01	-0.02
USD/INR	66.54	-0.28	-0.42
USD/YEN	120.16	0.35	0.29
USD/EUR	1.1195	-0.0008	-0.07

Support/Resistance levels for Indian Equity Indices					
	S1	S2	CMP	R1	R2
Sensex	25150	25025	25317	25425	25690
Nifty	7640	7600	7688	7720	7800
Nifty (Fut)	7670	7630	7719	7750	7830

Pivot Level	
Sensex	25187
Nifty	7649

US: US market closed more than 2 percent higher Tuesday, rebounding after a long weekend from their second-worst week for the year as gains in global markets boosted sentiment. Technically DJIA is presently trading at the 5th leg through Elliot wave count with negative divergence in oscillators.



Closing Brief

A rally in global markets led by Chinese stocks aided a rebound on the domestic bourses after a recent sell-off. The Sensex closed above the psychological 25,000 level.

Technical Build up

- ❖ Bullish candle with increase in volume.
- ❖ Buy crossover in oscillators.
- ❖ Lower band of Bollinger exist at 7409
- ❖ Crucial moving average of 20/50 SMA are at 8049 and 8315
- ❖ 200 SMA trend deciding level exist at 8426

Outlook for the day

Indian equity market in its previous trading session made a strong bounce back and posted gain of close to two percent despite of China's decline in both exports and imports for the month of August. Market Sentiments was further supported with the Moody's Investors Service indicating India's current account deficit to remain low supported by the declining oil prices and investment would drag economic growth to 7 per cent in the current fiscal. On technical front Nifty formed bullish railroad track formation in daily chart. On the oscillator front too Nifty witnessed positive divergence in oversold price condition leading towards the all awaited pullback in the market. On the F&O front short covering rally were seen with increase in OI followed by increase in price. Indian VIX decreased by over 5% the previous day followed by increase in premium and CoC. On the option front long addition were seen in 7700 & 7800 strike price call option followed by writing activity in higher strike price call of 8100 & 8200 hinting towards positive outlook for the market.



Increase in OI with Increase in Price (Long Buildup)					
Symbol	Prev OI	Curr OI	OI Chg (%)	Curr Pr.	Pr.Chg (%)
IBULHS					
GFIN	8755	11377	30	724.0	0.40
DHFL	3522	4463	26.7	433.45	1.50
JSWENE					
RGY	2454	3066	24.9	75.0	10.50
WOCKP					
HARMA	21689	24733	14	1188.90	0.30
MOTHE					
RSUMI	21689	24733	14	1188.90	0.30

Increase in OI with Decrease in Price (Short Buildup)					
Symbol	Prev OI	Curr OI	OI Chg (%)	Curr Pr.	Pr.Chg (%)
SKSMIC					
RO	7710	9405	22	440.65	-1.1
DIVISLA B	5796	6624	14.3	2093.0	-0.2
AMARAJ ABAT	1591	1816	14.1	903.0	-3.0
PIDILITI ND	932	1061	13.8	552.0	-0.6
ADANIP ORTS	11795	13283	12.6	319.3	-1.4

Nifty gained by 1.71% with Nifty future added 3.7 lakh shares in open interest and stock future added 287.5 lakh shares in open interest.

- Nifty PCR decreased to 0.94 from 0.95
- Total Nifty Calls added 6.3 lakh shares in open interest.
- Total Nifty Puts added 2.8 lakh shares in open interest.
- Maximum open interest (Nifty) in Calls for Apr. series is at 8500 and 7500 put.
- FII's sold net Rs.659.67 (provisional), while DIIs bought net Rs.447.41 Cr in cash market.
- FII sold net Rs.1129.22 Cr. In F&O
- Securities in Ban Period: NIL

Nifty Tracker

PARTICULARS	08/09/2015	07/09/2015	04/09/2015	03/09/2015
Spot	7688.25	7558.8	7655.05	7823
% Change in Spot	1.71%	-1.26%	-2.15%	1.37%
Nifty(FUT) Sep	7719.4	7574.5	7664.35	7842.55
Nifty(FUT) Sep Vol.	696134	548939	781099	491572
Nifty(FUT) Sep - OI	23745025	23572825	23195250	22688775
Nifty(FUT) Oct	7756.45	7612.6	7705.55	7883.8
Nifty(FUT) Oct Vol.	42606	27513	36013	18741
Nifty(FUT) Oct - OI	1322600	1256100	1165600	1012775

Trade Statistics for 08/09/2015

PARTICULARS	NO. OF CONTRACTS	TURNOVER (RS. CR.)	PUT CALL RATIO
NSE Index Futures	6,80,083	16996	-
NSE Stock Futures	7,68,138	19310	-
NSE Index Options	57,90,650	1,23,435.45	-
NSE Stock Options	3,50,071	9002	0.52
NSE F&O Total Turnover	75,88,942	168,744	0.85
NSE Cash Turnover	-	15060	-
BSE Cash Turnover	-	2,362.85	-
Total Turnover	-	186167	-

FII Corner (F&O)

FII NET BUYING/SELLING & CHANGE IN OPEN INTEREST (Cr. Rupee)						
PARTICULARS	08/09/2015		07/09/2015		04/09/2015	
	Net Buying /Selling	Change In Open interest	Net Buying /Selling	Change In Open interest	Net Buying /Selling	Change In Open interest
Index Future	802	1071	-1087	223	-356	-17
Index option	-1594	4173	-610	1151	636	3824
Stock Future	-279	1788	207	-573	490	-804
Stock option	-58	89	34	65	-44	69
Total	-1129	7121	-1456	867	726	3072

Market Open Interest

ADDITION/REDUCTION IN MARKET OPEN INTEREST					
Contracts	08/09/2015	07/09/2015	04/09/2015	03/09/2015	02/09/2015
Index Futures	489	381	91	-221	1180
Index Options	2199	-684	-1821	1021	410
Stock Futures	1384	3129	5662	3965	5297
Stock Options	106012	460	433	503	717
F&O Total	110083	3286	4364.75	5267.7	7604.25

Nifty Option Open Interest Statistics

NIFTY OPTIONS HIGHEST ADDITION IN OPEN INTEREST						
Expiry	Strike	Option Type	Settlement Price	Volume	Open Interest	Change In OI
24-Sep-15	7800	CE	112.25	596867	3137625	610050
24-Sep-15	7700	CE	162.7	437495	2188800	259900
24-Sep-15	7200	PE	34.95	337956	4083500	185025
24-Sep-15	7300	PE	46.4	374252	3056225	149175
24-Sep-15	6500	PE	4.95	37271	863400	142525
29-Oct-15	7600	PE	183.45	14095	544075	138900
29-Oct-15	7000	PE	61.35	16900	522075	116900
31-Dec-15	7500	CE	559.1	3249	218250	104500
26-Nov-15	7400	CE	526.55	1348	99975	99975
26-Nov-15	7300	CE	577	1210	89775	89775

NIFTY OPTIONS HIGHEST REDUCTION IN OPEN INTEREST						
Expiry	Strike	Option Type	Settlement Price	Volume	Open Interest	Change In OI
24-Sep-15	8200	CE	16.1	254790	3920150	-465675
24-Sep-15	8100	CE	27.2	319716	2805825	-417275
31-Dec-15	7500	PE	235.95	8684	2545150	-184850
24-Sep-15	7900	CE	73.7	527439	2388675	-150875
24-Sep-15	7500	PE	83.55	558240	4663300	-145700
29-Oct-15	8100	PE	437.3	5906	1033400	-120200
31-Dec-15	9500	CE	15.5	3461	1516200	-89750
24-Sep-15	7100	PE	25.75	180450	1543125	-84975
24-Sep-15	7000	PE	18.8	216638	2399200	-67200
24-Sep-15	8000	PE	327.45	23945	3919400	-62850

Stock Option Open Interest Statistics

STOCK OPTIONS WITH HIGHEST ADDITION IN OPEN INTEREST							
Symbol	Expiry	Strike	Option Type	Settl. Price	Volume	Open Interest	Change in OI
IFCI	24-Sep-15	22.5	CE	0.25	274	4784000	1352000
JPASSOCIAT	24-Sep-15	10	CE	0.35	1072	11960000	1088000
JPASSOCIAT	24-Sep-15	7.5	CE	1.8	199	3272000	1016000
JPPOWER	24-Sep-15	7.5	CE	0.15	123	3705000	950000
JPASSOCIAT	24-Sep-15	7.5	PE	0.2	404	4904000	928000
NHPC	24-Sep-15	15	PE	0.2	127	3399000	913000
RCOM	24-Sep-15	55	CE	3.6	599	1152000	716000
DLF	24-Sep-15	120	PE	7.1	1132	1234000	658000
RCOM	24-Sep-15	57.5	CE	2.35	451	992000	596000
ASHOKLEY	24-Sep-15	95	CE	0.95	1220	4956000	580000

STOCK OPTIONS WITH HIGHEST REDUCTION IN OPEN INTEREST							
Symbol	Expiry	Strike	Option Type	Settl. Price	Volume	Open Int.	Change in OI
JPASSOCIAT	24-Sep-15	12.5	CE	0.1	536	7704000	-888000
ADANIPOWER	24-Sep-15	20	PE	0.45	257	1624000	-404000
AMTEKAUTO	24-Sep-15	30	PE	5.55	413	484000	-300000
IOC	24-Sep-15	410	CE	9.25	871	261000	-251000
ICICIBANK	24-Sep-15	270	CE	7	2691	1285000	-230000
TATASTEEL	24-Sep-15	230	CE	10.35	2559	1198000	-213000
ICICIBANK	24-Sep-15	290	CE	2.2	795	1350000	-204000
AXISBANK	24-Sep-15	500	CE	9.95	3043	867000	-201000
SBIN	24-Sep-15	270	PE	41.85	275	322000	-181000
DLF	24-Sep-15	130	CE	3.85	1775	1814000	-174000

Disclosure

- The Research Analysts and /or Ashika Stock Broking Limited do hereby certify that all the views expressed in this research report accurately reflect their views about the subject issuer(s) or securities. Moreover, they also certify the followings:-
- The Research Analyst or Ashika Stock Broking Limited or his/its Associates or his/its relative, has any financial interest in the subject company(ies) covered in this report. **No**
- The Research Analyst or Ashika Stock Broking Limited or his/its Associates or his/its relative, have actual/beneficial ownership of 1% or more in the subject company, at the end of the month immediately preceding the date of the publication of the research report. **No**
- The Research Analyst or Ashika Stock Broking Limited or his/its Associates or his/its relatives has any material conflict of interest at the time of publication of the research report. **No**
- The Research Analyst or Ashika Stock Broking Limited or his/its Associates have received compensation for investment banking or merchant banking or brokerage services or for product other than for investment banking or merchant banking or brokerage services from the companies covered in this report in the past 12 months. **No**
- The Research Analyst or Ashika Stock Broking Limited or his/its Associates have managed or co managed in the previous 12 months any private or public offering of securities for the company(ies) covered in this report. **No**
- The Research Analyst or Ashika Stock Broking Limited or his/its Associates have received any compensation or other benefits from the company(ies) covered in this report or any third party in connection with the Research Report. **No**
- The Research Analyst has served as an officer, director or employee of the company(ies) covered in the research report. **No**
- The Research Analyst or Ashika Stock Broking Limited has been engaged in Market making activity of the company(ies) covered in the research report. **No**

Disclaimer

This report is for the personal information of the authorized recipient and does not construe to be any investment, legal or taxation advice to you. Ashika Stock Broking Ltd. is not soliciting any action based upon it. This report is not for public distribution and has been furnished to you solely for your information and should not be reproduced or redistributed to any other person in any form. The report is based upon information that we consider reliable, but we do not represent that it is accurate or complete, and it should not be relied upon such. Ashika Stock Broking Ltd. or any of its affiliates or employees shall not be in anyway responsible for any loss or damage that may arise to any person from any inadvertent error in the information contained in this report. Ashika Stock Broking Ltd., or any of its affiliates or employees do not provide, at any time, any express or implied warranty of any kind, regarding any matter pertaining to this report, including without limitation the implied warranties of merchantability, fitness for a particular purpose, and non-infringement. The recipients of this report should rely on their own investigations.