

# Technical Report

## Closing Brief

Key benchmark indices settled with small losses after alternately moving between the positive and negative terrain in a narrow range near the flat line throughout the session. The market breadth indicating the overall health of the market was weak.

## Technical Build up

- ❖ Bearish candle with increase in volume
- ❖ Sell crossover in oscillators.
- ❖ Lower band of Bollinger exist at 7976
- ❖ Crucial moving average of 20/50 SMA are at 81533 and 7986
- ❖ 200 SMA trend deciding level exist at 8372

## Outlook for the day

Indian equity market turned choppy in the previous trading day as cautiousness prevailed before the Bihar election result. On Sunday The grand alliance set grand victory hence Singapore Nifty witnessing a massive sellout slide even though market had been factoring in a defeat for the ruling BJP party in Bihar. On the technical front Nifty breached the upward rising trendline and the crucial 50dma too had been breached indicating negative bias for the market. Consecutive days of bearish down candle generally showing lack of strength of bulls. On the F&O front short buildup were seen in Index future with rise in OI followed by decrease in price. India VIX saw marginal uptick. On the option front call writers had been increasing their position in 8200 & 8500 strike prices with long addition in 7600 & 7700 strike price put option. Overall a negative sentiment is likely to prevail in the market.

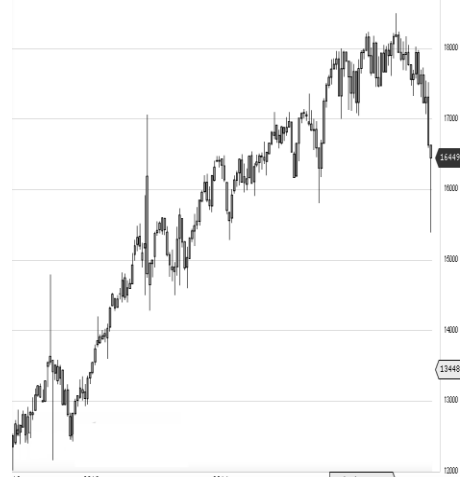
World Indices	LTP	Daily Ch(Pts)	Daily Ch(%)
Dow Jones	17910	46	0.26
Nasdaq	5147	19	0.38
S&P 500	2099	-	-0.03
FTSE 100	6353	-11	-0.17
DAX	10988	100	0.92
Hang Seng	22804	-62	-0.27
Nikkei	19593	327	1.70
Sensex	26265	-38	-0.15
Nifty	7954	-1	-0.01

Commodity /Forex	LTP	Daily Ch(Pts)	Daily Ch(%)
Gold (\$/Oz)	1087.70	-16.50	-1.49
Silver (\$/Oz)	14.69	-0.29	-1.95
Copper(USD/lb.)	224.20	-1.30	-0.58
Brent Crude(USD/bbl)	47.42	-0.56	-1.17
USD/INR	65.76	0.01	0.03
USD/YEN	123.13	1.38	1.13
USD/EUR	1.0741	-0.01	-1.31

Support/Resistance levels for Indian Equity Indices					
	S1	S2	CMP	R1	R2
Sensex	25750	25550	26265	26350	26485
Nifty	7800	7740	7954	7980	8020
Nifty (Fut)	7825	7765	7977	8005	8045

Pivot Level	
Sensex	26298
Nifty	7961

**US:** US market closed mixed Friday, but held solid gains for the week after a better-than-expected October jobs report increased confidence in the likelihood of a December rate hike. Technically DJIA is presently trading at the 5th leg through Elliot wave count with negative divergence in oscillators.



### Increase in OI with Increase in Price (Long Buildup)

Symbol	Prev OI	Curr OI	OI Chg (%)	Curr Pr.	Pr.Chg (%)
MOTHE					
RSUMI	6571	6912	5.2	269.25	10.70
IDEA	11689	12158	4	138.35	0.10
HDFCBA					
NK	52566	54135	3	1085.00	0.00
BANKBA					
RODA	12336	12620	2.3	168.65	5.60
TATACO					
MM	3472	3543	2	435	0.30

### Increase in OI with Decrease in Price (Short Buildup)

Symbol	Prev OI	Curr OI	OI Chg (%)	Curr Pr.	Pr.Chg (%)
DRREDD					
Y	7745	11732	51.5	3656	-14.3
IDFC	13608	15470	13.7	55.70	-6.9
ENGINE					
RIN	689	797	11.3	186.85	-1.4
ICICIBA					
NK	37042	38984	5.2	268.10	-1.2
BOSCHL					
TD	4638	4864	4.9	19432	-2.9

Nifty declined by 0.01% with Nifty future shaded 2.2 lakh shares in open interest and stock future added 83.4 lakh shares in open interest.

- Nifty PCR decreased to 0.83 from 0.86
- Total Nifty Calls added 51.5 lakh shares in open interest.
- Total Nifty Puts added 22.3 lakh shares in open interest.
- Maximum open interest (Nifty) in Calls for Oct. series is at 8200 and 7800 put.
- FII's bought net Rs.219.17 (provisional), while DIIs sold net Rs.39.45 Cr in cash market.
- FII sold net Rs.1978.14 Cr. In F&O
- Securities in Ban Period: CEATLTD

## Nifty Tracker

PARTICULARS	06/11/2015	05/11/2015	04/11/2015	03/11/2015
Spot	7954.3	7955.45	8040.2	8060.7
% Change in Spot	-0.01%	-1.05%	-0.25%	0.12%
Nifty(FUT) Nov	7977.4	7989.4	8070.05	8087.25
Nifty(FUT) Nov Vol.	148999	142523	116942	109417
Nifty(FUT) Nov - OI	18672300	19072950	18716400	19020225
Nifty(FUT) Dec	8022.05	8033.9	8117	8129.75
Nifty(FUT) Dec Vol.	8407	5768	6085	3292
Nifty(FUT) Dec - OI	3689625	3515175	3384075	3232650

## Trade Statistics for 06/11/2015

PARTICULARS	NO. OF CONTRACTS	TURNOVER (RS. CR.)	PUT CALL RATIO
NSE Index Futures	2,58,319	14623	-
NSE Stock Futures	5,87,792	28970	-
NSE Index Options	23,60,931	1,40,852.69	-
NSE Stock Options	3,49,884	17734	0.59
NSE F&O Total Turnover	35,56,928	202,179	0.75
NSE Cash Turnover	-	16443	-
BSE Cash Turnover	-	2,538.55	-
Total Turnover	-	221161	-

## FII Corner (F&O)

FII NET BUYING/SELLING & CHANGE IN OPEN INTEREST (Cr. Rupee)						
PARTICULARS	06/11/2015		05/11/2015		04/11/2015	
	Net Buying /Selling	Change In Open interest	Net Buying /Selling	Change In Open interest	Net Buying /Selling	Change In Open interest
Index Future	-649	-759	-858	-22	-294	3
Index option	-837	2800	-2182	1918	-193	1241
Stock Future	-435	81	-1072	-757	-34	524
Stock option	-57	224	-35	219	84	235
Total	-1978	2346	-4147	1358	-437	2003

## Market Open Interest

ADDITION/REDUCTION IN MARKET OPEN INTEREST					
Contracts	06/11/2015	05/11/2015	04/11/2015	03/11/2015	02/11/2015
Index Futures	-114	439	14	249	276
Index Options	-47	-311	526	557	957
Stock Futures	6789	6812	3307	4102	6612
Stock Options	1202	1212	1159	1330	1757
F&O Total	7830	8151	5005.51	6237.88	9601.15

## Nifty Option Open Interest Statistics

NIFTY OPTIONS HIGHEST ADDITION IN OPEN INTEREST						
Expiry	Strike	Option Type	Settlement Price	Volume	Open Interest	Change In OI
26-Nov-15	8200	CE	51.75	232630	5757300	1731675
26-Nov-15	8300	CE	29.35	165023	5437350	927525
26-Nov-15	8000	CE	129.55	135338	2946750	641925
26-Nov-15	7700	PE	52.1	100068	3540075	637050
26-Nov-15	8100	CE	85.4	180678	3712950	499575
26-Nov-15	7600	PE	35.05	66718	2515500	413775
26-Nov-15	8500	CE	8.4	86680	4802850	402450
26-Nov-15	8400	CE	15.5	121342	4374075	201225
26-Nov-15	7400	PE	15.9	31796	972150	166275
26-Nov-15	7800	CE	250.45	9661	991200	161775

NIFTY OPTIONS HIGHEST REDUCTION IN OPEN INTEREST						
Expiry	Strike	Option Type	Settlement Price	Volume	Open Interest	Change In OI
26-Nov-15	8100	PE	203.05	40926	2174475	-185100
26-Nov-15	8200	PE	269.55	9752	1309875	-131550
31-Dec-15	8700	CE	20.8	5263	467700	-105750
26-Nov-15	7900	PE	108.3	170786	3716400	-53100
31-Dec-15	8000	CE	225.5	5809	1117925	-44225
26-Nov-15	8800	CE	2.05	12262	1048350	-30750
31-Dec-15	7500	PE	72.2	8581	3604275	-30350
31-Dec-15	9000	CE	8.85	6602	3313200	-28500
26-Nov-15	8700	CE	2.9	19152	1896900	-27675
31-Dec-15	8100	PE	246.65	1015	268400	-25800

## Stock Option Open Interest Statistics

STOCK OPTIONS WITH HIGHEST ADDITION IN OPEN INTEREST							
Symbol	Expiry	Strike	Option Type	Settl. Price	Volume	Open Interest	Change in OI
IDFC	26-Nov-15	65	CE	0.35	3382	5339400	2121900
IDFC	26-Nov-15	60	CE	0.85	3295	4953300	1910700
IFCI	26-Nov-15	27.5	CE	0.5	440	8240000	1700000
BANKBARODA	26-Nov-15	140	PE	1.25	2376	1863100	1646100
BANKBARODA	26-Nov-15	150	PE	2.35	2903	2073900	1537600
RPOWER	26-Nov-15	52.5	CE	0.7	390	3072000	1488000
UNITECH	26-Nov-15	7.5	CE	0.35	122	15169000	1463000
SBIN	26-Nov-15	230	PE	2.8	5451	2770000	1250000
IDFC	26-Nov-15	55	CE	2.5	1089	1356300	1181400
BANKBARODA	26-Nov-15	160	PE	4.55	1319	1556200	1125300

STOCK OPTIONS WITH HIGHEST REDUCTION IN OPEN INTEREST							
Symbol	Expiry	Strike	Option Type	Settl. Price	Volume	Open Int.	Change in OI
RPOWER	26-Nov-15	50	PE	3.1	110	888000	-444000
ICICIBANK	26-Nov-15	300	CE	1.15	1282	3746800	-443700
ADANIPOWER	26-Nov-15	27.5	PE	0.65	174	840000	-420000
ICICIBANK	26-Nov-15	270	PE	9.25	1099	1587800	-413100
ASHOKLEY	26-Nov-15	95	CE	1.1	1922	7847000	-364000
TATASTEEL	26-Nov-15	220	PE	8.15	1599	648000	-356000
SBIN	26-Nov-15	240	CE	10.4	4915	1890000	-270000
RCOM	26-Nov-15	80	CE	2.65	319	2440000	-264000
SBIN	26-Nov-15	250	CE	5.8	9922	5824000	-264000
DLF	26-Nov-15	125	CE	3	391	1660000	-260000

**Disclosure**

- The Research Analysts and /or Ashika Stock Broking Limited do hereby certify that all the views expressed in this research report accurately reflect their views about the subject issuer(s) or securities. Moreover, they also certify the followings:-
- The Research Analyst or Ashika Stock Broking Limited or his/its Associates or his/its relative, has any financial interest in the subject company(ies) covered in this report. **No**
- The Research Analyst or Ashika Stock Broking Limited or his/its Associates or his/its relative, have actual/beneficial ownership of 1% or more in the subject company, at the end of the month immediately preceding the date of the publication of the research report. **No**
- The Research Analyst or Ashika Stock Broking Limited or his/its Associates or his/its relatives has any material conflict of interest at the time of publication of the research report. **No**
- The Research Analyst or Ashika Stock Broking Limited or his/its Associates have received compensation for investment banking or merchant banking or brokerage services or for product other than for investment banking or merchant banking or brokerage services from the companies covered in this report in the past 12 months. **No**
- The Research Analyst or Ashika Stock Broking Limited or his/its Associates have managed or co managed in the previous 12 months any private or public offering of securities for the company(ies) covered in this report. **No**
- The Research Analyst or Ashika Stock Broking Limited or his/its Associates have received any compensation or other benefits from the company(ies) covered in this report or any third party in connection with the Research Report. **No**
- The Research Analyst has served as an officer, director or employee of the company(ies) covered in the research report. **No**
- The Research Analyst or Ashika Stock Broking Limited has been engaged in Market making activity of the company(ies) covered in the research report. **No**

**Disclaimer**

This report is for the personal information of the authorized recipient and does not construe to be any investment, legal or taxation advice to you. Ashika Stock Broking Ltd. is not soliciting any action based upon it. This report is not for public distribution and has been furnished to you solely for your information and should not be reproduced or redistributed to any other person in any form. The report is based upon information that we consider reliable, but we do not represent that it is accurate or complete, and it should not be relied upon such. Ashika Stock Broking Ltd. or any of its affiliates or employees shall not be in anyway responsible for any loss or damage that may arise to any person from any inadvertent error in the information contained in this report. Ashika Stock Broking Ltd., or any of its affiliates or employees do not provide, at any time, any express or implied warranty of any kind, regarding any matter pertaining to this report, including without limitation the implied warranties of merchantability, fitness for a particular purpose, and non-infringement. The recipients of this report should rely on their own investigations.