

Technical Report

Technical & Derivative Report

World Indices	LTP	Daily Ch(Pts)	Daily Ch(%)
Dow Jones	16924	-157	-0.92
Nasdaq	4782	-13	-0.29
S&P 500	1994	-9	-0.47
FTSE 100	6269	-72	-1.15
DAX	9915	-116	-1.17
Hang Seng	22643	203	0.91
Nikkei	18044	153	0.86
Sensex	26779	-66	-0.25
Nifty	8107	-23	-0.29

Commodity /Forex	LTP	Daily Ch(Pts)	Daily Ch(%)
Gold (\$/Oz)	1183.90	4.10	0.35
Silver (\$/Oz)	16.16	0.04	0.24
Copper(USD/lb.)	241.80	0.25	0.10
Brent Crude(USD/bbl)	49.15	-	-
USD/INR	65.03	-0.14	-0.23
USD/YEN	119.08	0.25	0.21
USD/EUR	1.1469	-0.0005	-0.04

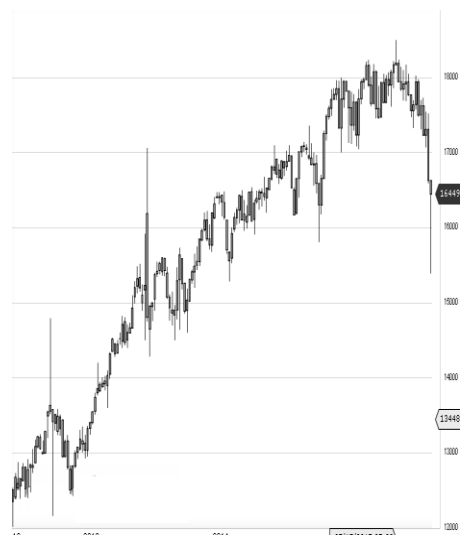
Support/Resistance levels for Indian Equity Indices

	S1	S2	CMP	R1	R2
Sensex	26620	26455	26779	27020	27120
Nifty	8060	8010	8107	8180	8210
Nifty (Fut)	8075	8025	8121	8195	8225

Pivot Level

Sensex	26787
Nifty	8114

US: US market closed lower Wednesday as investors digested earnings reports and weighed weaker-than-expected data. Technically DJIA is presently trading at the 5th leg through Elliot wave count with negative divergence in oscillators.



Closing Brief

Losses for TCS and Hindustan Unilever (HUL) after the announcement of second quarter earnings pulled key benchmark indices lower. The market breadth indicating overall health of the market was positive.

Technical Build up

- ❖ Bearish candle with increase in volume.
- ❖ Sell crossover in oscillators.
- ❖ Upper band of Bollinger exist at 8262
- ❖ Crucial moving average of 20/50 SMA are at 7988 and 8078
- ❖ 200 SMA trend deciding level exist at 8380

Outlook for the day

Indian equity market closed marginally in red after hovering in a narrow range. Quarterly results and Bihar election results keeps the market in a narrow band. However global market were not encouraging due to disappointing China data. On the technical front Nifty had been moving within the upward sloping channel, presently nifty is trading within a narrow range after facing resistance from the upper band of the channel and witnessed profit booking activity. The bullish Inverted Head & Shoulder formation in daily chart would continue to keep the bullish structure intact for the market as long as the Index sustain above the neckline of 8050 as now the previous resistance should act as important support zone as per role reversal technique. However going forward a strong resistance zone exist at 8200-8225 and it would be advisable not to trade aggressively until the said level is breached. On the F&O front decrease in OI followed by decrease in price indicates of long liquidation in the Future contract. Indian VIX decreased compared to the previous day while premium and CoC saw marginal uptick. On the option front writing activity dominated with 7800 & 8000 strike price put option saw the maximum concentration while on the call side 8200 & 8400 strike price saw the maximum interest. Hence it can be judged that an overall cautious approach need to be followed as upside seems limited.



Increase in OI with Increase in Price (Long Buildup)					
Symbol	Prev OI	Curr OI	OI Chg (%)	Curr Pr.	Pr.Chg (%)
BEML	324	377	16.4	1250	2.0
PETRON ET	2036	2227	9.4	188.85	2.9
INDIACE M	4832	5204	7.7	81.35	3.1
SOUTHB ANK	1633	1742	6.7	23.05	2.0
SKSMIC RO	13794	14701	6.6	442.5	3.20

Increase in OI with Decrease in Price (Short Buildup)					
Symbol	Prev OI	Curr OI	OI Chg (%)	Curr Pr.	Pr.Chg (%)
ZEEL	7167	9924	38.5	389.0	-3.1
HINDUN ILVR	16294	19180	17.7	787.15	-2.7
TV18BR DCST	735	843	14.7	33.4	-4.0
TCS	32926	37557	14.1	2487.0	-4.2
BHARAT FORG	14772	15750	6.6	890.0	-4.8

Nifty declined by 0.29% with Nifty future added 1.0 lakh shares in open interest and stock future added 163.0 lakh shares in open interest.

- Nifty PCR decreased to 1.00 from 1.02
- Total Nifty Calls added 5.3 lakh shares in open interest.
- Total Nifty Puts shaded 8.2 lakh shares in open interest.
- Maximum open interest (Nifty) in Calls for Oct. series is at 8200 and 8000 put.
- FII's bought net Rs.272.61 (provisional), while DIIs sold net Rs.273.51 Cr in cash market.
- FII sold net Rs.1420.42 Cr. In F&O
- Securities in Ban Period: NIL

Nifty Tracker

PARTICULARS	14/10/2015	13/10/2015	12/10/2015	09/10/2015
Spot	8107.9	8131.7	8143.6	8189.7
% Change in Spot	-0.29%	-0.15%	-0.56%	0.74%
Nifty(FUT) Oct	8121.4	8138.8	8149.6	8205.35
Nifty(FUT) Oct Vol.	339583	436206	402009	508415
Nifty(FUT) Oct - OI	19782075	21086975	21845325	21250875
Nifty(FUT) Nov	8161.4	8176.4	8187.9	8247.75
Nifty(FUT) Nov Vol.	9849	13002	8310	7930
Nifty(FUT) Nov - OI	2429925	2014800	1615725	1418775

Trade Statistics for 14/10/2015

PARTICULARS	NO. OF CONTRACTS	TURNOVER (RS. CR.)	PUT CALL RATIO
NSE Index Futures	4,61,001	12673	-
NSE Stock Futures	7,44,279	20180	-
NSE Index Options	42,42,236	95192	-
NSE Stock Options	5,02,979	14088	0.55
NSE F&O Total Turnover	59,50,495	142,133	0.96
NSE Cash Turnover	-	14435	-
BSE Cash Turnover	-	3,293.22	-
Total Turnover	-	159862	-

FII Corner (F&O)

FII NET BUYING/SELLING & CHANGE IN OPEN INTEREST (Cr. Rupee)						
PARTICULARS	14/10/2015		13/10/2015		12/10/2015	
	Net Buying /Selling	Change In Open interest	Net Buying /Selling	Change In Open interest	Net Buying /Selling	Change In Open interest
Index Future	-873	463	-387	-359	743	676
Index option	-920	-480	-729	1303	-888	1040
Stock Future	-688	226	-331	30	-65	-31
Stock option	-25	85	27	265	-160	94
Total	-2506	295	-1420	1238	-370	1779

Market Open Interest

ADDITION/REDUCTION IN MARKET OPEN INTEREST					
Contracts	14/10/2015	13/10/2015	12/10/2015	09/10/2015	08/10/2015
Index Futures	81	-301	708	199	-272
Index Options	291	372	17	755	-122
Stock Futures	362	189	2937	1700	1967
Stock Options	609	1066	993	1637	918
F&O Total	1343	1325	4654.98	4290.78	2491.08

Nifty Option Open Interest Statistics

NIFTY OPTIONS HIGHEST ADDITION IN OPEN INTEREST						
Expiry	Strike	Option Type	Settlement Price	Volume	Open Interest	Change In OI
29-Oct-15	7800	PE	24.25	231861	4168850	291750
29-Oct-15	8000	PE	59.9	376544	4769800	174675
29-Oct-15	8100	CE	112.5	255673	2854300	135800
29-Oct-15	7500	PE	7.65	115619	3957775	128225
31-Dec-15	7500	PE	66.25	3658	3198000	113100
26-Nov-15	8600	CE	29.25	4189	610800	105225
31-Dec-15	9000	CE	24.25	2877	2577900	79425
26-Nov-15	8500	CE	48	4551	891525	78300
29-Oct-15	8300	CE	28.1	370557	5023300	78150
31-Dec-15	7400	CE	831	1051	272400	60000

NIFTY OPTIONS HIGHEST REDUCTION IN OPEN INTEREST						
Expiry	Strike	Option Type	Settlement Price	Volume	Open Interest	Change In OI
29-Oct-15	8100	PE	92.5	431187	3821175	-754975
29-Oct-15	7700	PE	15.4	148807	2657400	-251075
29-Oct-15	8200	PE	139.1	172048	2470700	-143550
26-Nov-15	7500	PE	35.65	3727	583350	-111600
29-Oct-15	7600	PE	10.45	96244	2735100	-103025
29-Oct-15	7700	CE	433.2	6761	518425	-101725
29-Oct-15	7300	PE	3.7	37181	1407125	-89075
29-Oct-15	8600	CE	2.2	68575	1939250	-82750
29-Oct-15	7200	PE	2.95	15777	1131150	-79725
26-Nov-15	7800	CE	434.7	1450	229650	-69975

Stock Option Open Interest Statistics

STOCK OPTIONS WITH HIGHEST ADDITION IN OPEN INTEREST							
Symbol	Expiry	Strike	Option Type	Settl. Price	Volume	Open Interest	Change in OI
IFCI	29-Oct-15	25	CE	0.55	963	6488000	912000
TV18BRDCST	29-Oct-15	35	CE	0.75	466	2244000	867000
ZEEL	29-Oct-15	400	CE	5.55	4972	959000	818000
HINDALCO	29-Oct-15	85	PE	2.3	1456	2012000	702000
TV18BRDCST	29-Oct-15	40	CE	0.15	219	1683000	697000
IFCI	29-Oct-15	27.5	CE	0.2	376	3088000	688000
TV18BRDCST	29-Oct-15	37.5	CE	0.35	293	1700000	680000
IFCI	29-Oct-15	32.5	CE	0.05	83	736000	664000
JPASSOCIAT	29-Oct-15	12.5	PE	0.25	471	8328000	664000
UNITECH	26-Nov-15	10	CE	0.4	8	4158000	616000

STOCK OPTIONS WITH HIGHEST REDUCTION IN OPEN INTEREST							
Symbol	Expiry	Strike	Option Type	Settl. Price	Volume	Open Int.	Change in OI
JPASSOCIAT	29-Oct-15	12.5	CE	2	678	13120000	-1976000
IFCI	29-Oct-15	22.5	PE	0.6	370	2192000	-1304000
HDIL	29-Oct-15	75	CE	4.6	809	1544000	-458000
IDBI	29-Oct-15	85	CE	0.55	305	3252000	-328000
IFCI	29-Oct-15	22.5	CE	1.55	256	3432000	-304000
IDFC	29-Oct-15	75	CE	0.15	234	2598000	-296000
INDIACEM	29-Oct-15	80	CE	3.5	608	1436000	-288000
ASHOKLEY	29-Oct-15	95	CE	3.25	730	5596000	-272000
DLF	29-Oct-15	140	CE	3.15	1644	3298000	-248000
UNITECH	29-Oct-15	7.5	CE	0.6	587	15444000	-231000

Disclosure

- The Research Analysts and /or Ashika Stock Broking Limited do hereby certify that all the views expressed in this research report accurately reflect their views about the subject issuer(s) or securities. Moreover, they also certify the followings:-
- The Research Analyst or Ashika Stock Broking Limited or his/its Associates or his/its relative, has any financial interest in the subject company(ies) covered in this report. **No**
- The Research Analyst or Ashika Stock Broking Limited or his/its Associates or his/its relative, have actual/beneficial ownership of 1% or more in the subject company, at the end of the month immediately preceding the date of the publication of the research report. **No**
- The Research Analyst or Ashika Stock Broking Limited or his/its Associates or his/its relatives has any material conflict of interest at the time of publication of the research report. **No**
- The Research Analyst or Ashika Stock Broking Limited or his/its Associates have received compensation for investment banking or merchant banking or brokerage services or for product other than for investment banking or merchant banking or brokerage services from the companies covered in this report in the past 12 months. **No**
- The Research Analyst or Ashika Stock Broking Limited or his/its Associates have managed or co managed in the previous 12 months any private or public offering of securities for the company(ies) covered in this report. **No**
- The Research Analyst or Ashika Stock Broking Limited or his/its Associates have received any compensation or other benefits from the company(ies) covered in this report or any third party in connection with the Research Report. **No**
- The Research Analyst has served as an officer, director or employee of the company(ies) covered in the research report. **No**
- The Research Analyst or Ashika Stock Broking Limited has been engaged in Market making activity of the company(ies) covered in the research report. **No**

Disclaimer

This report is for the personal information of the authorized recipient and does not construe to be any investment, legal or taxation advice to you. Ashika Stock Broking Ltd. is not soliciting any action based upon it. This report is not for public distribution and has been furnished to you solely for your information and should not be reproduced or redistributed to any other person in any form. The report is based upon information that we consider reliable, but we do not represent that it is accurate or complete, and it should not be relied upon such. Ashika Stock Broking Ltd. or any of its affiliates or employees shall not be in anyway responsible for any loss or damage that may arise to any person from any inadvertent error in the information contained in this report. Ashika Stock Broking Ltd., or any of its affiliates or employees do not provide, at any time, any express or implied warranty of any kind, regarding any matter pertaining to this report, including without limitation the implied warranties of merchantability, fitness for a particular purpose, and non-infringement. The recipients of this report should rely on their own investigations.