

## Technical Report

### Closing Brief

Key indices bounced back from a seven-weeks low in mid morning trade. The market breadth indicating the overall health of the market was positive.

### Technical Build up

- ❖ Bullish Engulfing candle with increase in volume
- ❖ Sell crossover in oscillators.
- ❖ Lower band of Bollinger exist at 7715
- ❖ Crucial moving average of 20/50 SMA are at 8062 and 7972
- ❖ 200 SMA trend deciding level exist at 8349

### Outlook for the day

Indian equity market witnessed a breather on Monday and gained over half a percent despite negative global cues. The rally was mainly triggered after the statement made by the Prime Minister that FDI into India has increased by 40 percent since last year, boosted the sentiments and that further improved with contraction in WPI inflation figure. On the technical front Nifty formed a bullish engulfing candle with rise in volume followed by an inverted Hammer indicating of arrest in pessimism. The pullback rally in the market was mainly triggered due to oversold reading in oscillator. However it would be premature to say that Nifty might have bottomed out as yesterday being the first day of a counter trend rally. Continuous bearish down candle had been showing lack of strength in the market and since breaking the major level of 7950 now the trading range for the market stands around 7600-7950. On the F&O front short covering rally was witnessed with rise in price followed by decrease in OI. Premium and CoC also increased indicating bullish structural buildup. On the option front higher strike price call option of 7900 & 8000 saw long addition followed by writing activity in 8200 & 8400 strike prices indicating that though rally in the market is likely to remain but upside might be capped.



Increase in OI with Increase in Price (Long Buildup)					
Symbol	Prev OI	Curr OI	OI Chg (%)	Curr Pr.	Pr.Chg (%)
RELINFR					
A	4119	4933	19.8	419.3	5.90
KOTAKB					
ANK	12928	15097	16.8	680.0	1.30
BHARAT					
IARTL	13994	15615	11.6	336.15	0.70
AMBUJA					
CEM	4010	4377	9.2	195.20	1.00
ZEEL	7133	7688	7.8	382.65	1.00

Increase in OI with Decrease in Price (Short Buildup)					
Symbol	Prev OI	Curr OI	OI Chg (%)	Curr Pr.	Pr.Chg (%)
CADILA					
HC	1760	2218	26	397.30	-4.1
OIL	2231	2770	24.2	361.40	-1.5
DABUR	1414	1725	22	262.15	-2.0
AJANTP					
HARMA	1402	1672	19.3	1329.30	-4.7
KSCL	2931	3373	15.1	391.70	-7.8

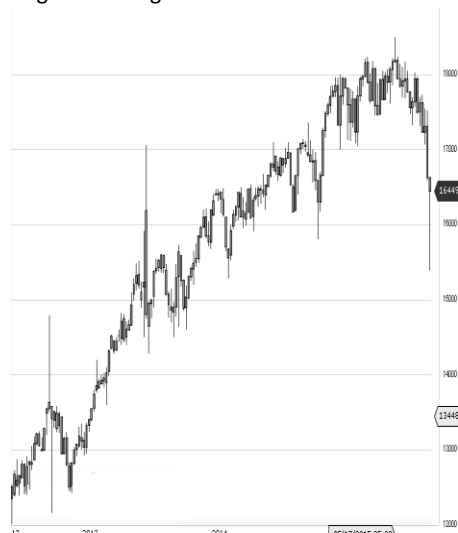
World Indices	LTP	Daily Ch(Pts)	Daily Ch(%)
Dow Jones	17483	237	1.38
Nasdaq	4984	56	1.15
S&P 500	2053	30	1.49
FTSE 100	6146	28	0.46
DAX	10713	4	0.05
Hang Seng	22380	369	1.68
Nikkei	19661	267	1.38
Sensex	25760	149	0.58
Nifty	7806	44	0.57

Commodity /Forex	LTP	Daily Ch(Pts)	Daily Ch(%)
Gold (\$/Oz)	1081.90	-1.70	-0.16
Silver (\$/Oz)	14.20	-0.03	-0.19
Copper(USD/lb.)	211.00	-0.55	-0.26
Brent Crude(USD/bbl)	44.61	0.05	0.11
USD/INR	65.99	-0.10	-0.16
USD/YEN	123.29	0.11	0.09
USD/EUR	1.0669	-0.0017	-0.16

Support/Resistance levels for Indian Equity Indices					
	S1	S2	CMP	R1	R2
Sensex	25635	25440	25760	25900	26100
Nifty	7770	7710	7806	7850	7910
Nifty (Fut)	7790	7730	7827	7870	7930

Pivot Level	
Sensex	25692
Nifty	7786

**US:** US gained Monday on a sharp jump in oil prices boosted by geopolitical concerns following weekend terror attacks in Paris. Technically DJIA is presently trading at the 5th leg through Elliot wave count with negative divergence in oscillators.



Nifty gained by 0.57% with Nifty future shaded 3.8 lakh shares in open interest and stock future added 405.1 lakh shares in open interest.

- Nifty PCR decreased to 0.71 from 0.72
- Total Nifty Calls added 20.3lakh shares in open interest.
- Total Nifty Puts shaded 9.0 lakh shares in open interest.
- Maximum open interest (Nifty) in Calls for Oct. series is at 8200 and 7700 put.
- FII's sold net Rs.1051.26 (provisional), while DIIs bought net Rs.661.71 Cr in cash market.
- FII bought net Rs.417.80 Cr. In F&O
- Securities in Ban Period: CEATLTD & JINDALSTEL

## Nifty Tracker

PARTICULARS	16/11/2015	13/11/2015	10/11/2015	09/11/2015
Spot	7806.6	7762.25	7783.35	7915.2
% Change in Spot	0.57%	-0.27%	-1.67%	-0.49%
Nifty(FUT) Nov	7827.25	7774.3	7802.5	7936.05
Nifty(FUT) Nov Vol.	157193	113362	158968	226372
Nifty(FUT) Nov - OI	17152425	17551350	17737575	17932575
Nifty(FUT) Dec	7870.95	7818.75	7848.15	7980.55
Nifty(FUT) Dec Vol.	8555	6926	8528	10280
Nifty(FUT) Dec - OI	4159050	4136025	4023150	3838950

## Trade Statistics for 16/11/2015

PARTICULARS	NO. OF CONTRACTS	TURNOVER (RS. CR.)	PUT CALL RATIO
NSE Index Futures	2,74,189	15281	-
NSE Stock Futures	4,72,327	23393	-
NSE Index Options	28,75,537	1,67,225.54	-
NSE Stock Options	2,75,158	14031	0.47
NSE F&O Total Turnover	38,97,212	219,931	0.76
NSE Cash Turnover	-	15284	-
BSE Cash Turnover	-	2,669.53	-
Total Turnover	-	237885	-

## FII Corner (F&O)

FII NET BUYING/SELLING & CHANGE IN OPEN INTEREST (Cr. Rupee)						
PARTICULARS	16/11/2015		13/11/2015		10/11/2015	
	Net Buying /Selling	Change In Open interest	Net Buying /Selling	Change In Open interest	Net Buying /Selling	Change In Open interest
Index Future	-646	155	-1250	-612	-1485	815
Index option	1498	2998	979	3475	-2201	2447
Stock Future	-358	807	-343	-422	-187	930
Stock option	-76	120	115	547	-110	214
Total	418	4081	-499	2988	-3983	4406

## Market Open Interest

ADDITION/REDUCTION IN MARKET OPEN INTEREST					
Contracts	16/11/2015	13/11/2015	10/11/2015	09/11/2015	06/11/2015
Index Futures	-57	-170	-252	-529	-114
Index Options	1238	383	-444	687	-47
Stock Futures	2710	3512	6134	196	6789
Stock Options	353	1159	1229	1430	1202
F&O Total	4244	4884	6667.273	1784.47	7830.47

## Nifty Option Open Interest Statistics

NIFTY OPTIONS HIGHEST ADDITION IN OPEN INTEREST						
Expiry	Strike	Option Type	Settlement Price	Volume	Open Interest	Change In OI
26-Nov-15	8000	CE	21.2	271488	6473925	733725
26-Nov-15	7900	CE	49.25	260477	4349850	614250
31-Dec-15	8200	CE	54	12306	1129100	314475
26-Nov-15	7400	PE	5.85	42136	1627800	237525
26-Nov-15	7300	PE	3.7	24739	1199400	229800
26-Nov-15	7500	PE	10.35	111852	3548325	229200
31-Dec-15	8500	CE	16.25	10654	2423600	221050
26-Nov-15	7750	PE	51.4	15013	350025	217275
26-Nov-15	7950	CE	32.9	16475	422400	198000
31-Dec-15	8300	CE	35.2	10197	787825	192300

NIFTY OPTIONS HIGHEST REDUCTION IN OPEN INTEREST						
Expiry	Strike	Option Type	Settlement Price	Volume	Open Interest	Change In OI
26-Nov-15	7900	PE	121.6	57071	2087550	-445650
26-Nov-15	7800	CE	95.3	285571	3079650	-402375
26-Nov-15	8200	CE	4.15	96454	7110000	-229650
26-Nov-15	8400	CE	1.75	19133	2879250	-218400
26-Nov-15	8000	PE	191.4	20215	1738575	-191475
26-Nov-15	8200	PE	371.15	5369	841050	-142425
26-Nov-15	8300	CE	2.6	41256	4762200	-111825
26-Nov-15	7600	PE	19.65	176374	3206175	-100800
26-Nov-15	8300	PE	468.6	2059	383625	-100200
26-Nov-15	8100	PE	276.05	6402	1524825	-92325

## Stock Option Open Interest Statistics

STOCK OPTIONS WITH HIGHEST ADDITION IN OPEN INTEREST							
Symbol	Expiry	Strike	Option Type	Settl. Price	Volume	Open Interest	Change in OI
GMRINFRA	26-Nov-15	15	CE	0.3	558	12948000	7020000
JPASSOCIAT	26-Nov-15	12.5	PE	0.3	132	6336000	2592000
TV18BRDCST	26-Nov-15	37.5	CE	0.3	197	2601000	1972000
DLF	26-Nov-15	130	CE	0.35	735	7305000	1450000
L&TFH	26-Nov-15	70	CE	0.5	352	2200000	968000
TV18BRDCST	26-Nov-15	35	CE	0.65	143	3298000	918000
UNITECH	26-Nov-15	7.5	CE	0.2	51	18634000	847000
GMRINFRA	26-Nov-15	12.5	PE	0.25	119	4602000	819000
GMRINFRA	31-Dec-15	17.5	CE	0.2	21	819000	741000
JPASSOCIAT	31-Dec-15	17.5	CE	0.25	15	960000	624000

STOCK OPTIONS WITH HIGHEST REDUCTION IN OPEN INTEREST							
Symbol	Expiry	Strike	Option Type	Settl. Price	Volume	Open Int.	Change in OI
GMRINFRA	26-Nov-15	12.5	CE	1.2	432	4212000	-819000
FEDERALBNK	26-Nov-15	55	CE	2.4	139	360000	-464000
JINDALSTEL	26-Nov-15	80	CE	3.75	367	2303000	-448000
JPASSOCIAT	26-Nov-15	15	CE	0.15	235	14400000	-432000
SBIN	26-Nov-15	245	CE	7.4	1590	1104000	-418000
ICICIBANK	26-Nov-15	260	CE	9.85	983	625600	-408000
SBIN	26-Nov-15	250	CE	4.8	4893	8062000	-402000
ICICIBANK	26-Nov-15	270	CE	4.5	2696	3462900	-382500
JINDALSTEL	26-Nov-15	75	PE	0.8	257	1155000	-322000
ASHOKLEY	26-Nov-15	90	PE	1.9	196	2730000	-315000

**Disclosure**

- The Research Analysts and /or Ashika Stock Broking Limited do hereby certify that all the views expressed in this research report accurately reflect their views about the subject issuer(s) or securities. Moreover, they also certify the followings:-
- The Research Analyst or Ashika Stock Broking Limited or his/its Associates or his/its relative, has any financial interest in the subject company(ies) covered in this report. **No**
- The Research Analyst or Ashika Stock Broking Limited or his/its Associates or his/its relative, have actual/beneficial ownership of 1% or more in the subject company, at the end of the month immediately preceding the date of the publication of the research report. **No**
- The Research Analyst or Ashika Stock Broking Limited or his/its Associates or his/its relatives has any material conflict of interest at the time of publication of the research report. **No**
- The Research Analyst or Ashika Stock Broking Limited or his/its Associates have received compensation for investment banking or merchant banking or brokerage services or for product other than for investment banking or merchant banking or brokerage services from the companies covered in this report in the past 12 months. **No**
- The Research Analyst or Ashika Stock Broking Limited or his/its Associates have managed or co managed in the previous 12 months any private or public offering of securities for the company(ies) covered in this report. **No**
- The Research Analyst or Ashika Stock Broking Limited or his/its Associates have received any compensation or other benefits from the company(ies) covered in this report or any third party in connection with the Research Report. **No**
- The Research Analyst has served as an officer, director or employee of the company(ies) covered in the research report. **No**
- The Research Analyst or Ashika Stock Broking Limited has been engaged in Market making activity of the company(ies) covered in the research report. **No**

**Disclaimer**

This report is for the personal information of the authorized recipient and does not construe to be any investment, legal or taxation advice to you. Ashika Stock Broking Ltd. is not soliciting any action based upon it. This report is not for public distribution and has been furnished to you solely for your information and should not be reproduced or redistributed to any other person in any form. The report is based upon information that we consider reliable, but we do not represent that it is accurate or complete, and it should not be relied upon such. Ashika Stock Broking Ltd. or any of its affiliates or employees shall not be in anyway responsible for any loss or damage that may arise to any person from any inadvertent error in the information contained in this report. Ashika Stock Broking Ltd., or any of its affiliates or employees do not provide, at any time, any express or implied warranty of any kind, regarding any matter pertaining to this report, including without limitation the implied warranties of merchantability, fitness for a particular purpose, and non-infringement. The recipients of this report should rely on their own investigations.