

# Technical Report

## Closing Brief

The stock market in India extended its winning streak for the second consecutive trading session on Tuesday amid a swinging day. The market breadth indicating the overall health of the market was positive. A total of 53 stocks registered a fresh 52-week high in trades yesterday, while 31 stocks touched a new 52-week low in NSE.

## Technical Build up

- ❖ Bullish candle with increase in volume
- ❖ Buy crossover in oscillators.
- ❖ Lower band of Bollinger exist at 7689
- ❖ Crucial moving average of 20/50 SMA are at 8045 and 7969
- ❖ 200 SMA trend deciding level exist at 8344

## Outlook for the day

Indian equity market managed to end in green amid a volatile session, optimistic statement by Finance Minister on smooth passage of GST bill in upcoming winter session of the parliament helped the Index to trim the intraday losses and ended on a positive note. On the technical front The momentum indicator is gradually reversing the lower extreme suggesting that there could be a temporary pullback. A follow-up breakdown with a gap suggests the immediate resistance is placed at 7870. Now if Nifty breaks 7870 on the upside, it will head towards 7950. Immediate support now lies at 7720. Trading range will be 7600-7950 in near term. On the F&O front short covering rally continued with rise in price followed by decrease in OI. Premium and CoC has decreased marginally while IndiaVIX too has decreased. On the option front maximum build-up is visible in 8200 call and 7800 put options with continuous writing activity in higher strike price call option of 8200 & 8300. Hence seeing continuous selling in equities and Index Futures by bigger hands it seems likely that market will continue to remain under pressure and bottom fishing need to be avoided till there is a meaningful change in data.



Increase in OI with Increase in Price (Long Buildup)					
Symbol	Prev OI	Curr OI	OI Chg (%)	Curr Pr.	Pr.Chg (%)
<b>PETRON</b>					
ET	1389	1591	14.5	208.25	1.70
STAR	4400	4901	11.4	1385.70	5.50
UBL	1661	1848	11.3	995.30	2.80
VOLTAS	3831	4154	8.4	260.30	0.20
BIOCON	2427	2599	7.1	445.0	0.10

Increase in OI with Decrease in Price (Short Buildup)					
Symbol	Prev OI	Curr OI	OI Chg (%)	Curr Pr.	Pr.Chg (%)
OFSS	1052	1186	12.7	3895	-1.0
HEXAW					
ARE	1925	2158	12.1	252.40	-2.0
SIEMEN S	2698	2998	11.1	1224.35	-1.5
CESC	2440	2700	10.7	544.0	-1.3
ABIRLA					
NUVO	2960	3260	10.1	1966.15	-0.9

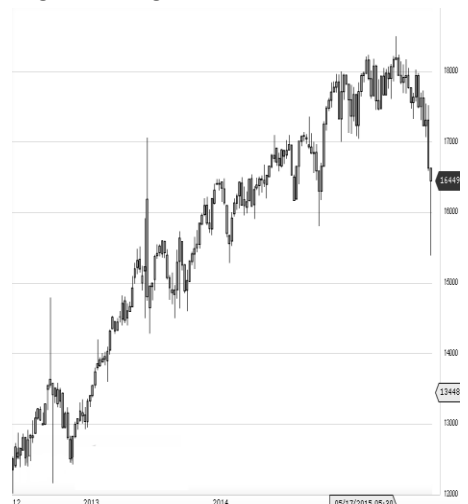
World Indices	LTP	Daily Ch(Pts)	Daily Ch(%)
Dow Jones	17489	6	0.04
Nasdaq	4986	1	0.03
S&P 500	2050	-2	-0.13
FTSE 100	6268	122	1.99
DAX	10971	257	2.41
Hang Seng	22257	-7	-0.03
Nikkei	19805	174	0.89
Sensex	25864	104	0.41
Nifty	7837	30	0.40

Commodity /Forex	LTP	Daily Ch(Pts)	Daily Ch(%)
Gold (\$/Oz)	1065.70	-2.90	-0.27
Silver (\$/Oz)	14.10	-0.08	-0.54
Copper(USD/lb.)	209.45	-0.95	-0.45
Brent			
Crude(USD/bbl)	43.93	0.36	0.83
USD/INR	66.03	0.03	0.06
USD/YEN	123.43	-0.02	-0.02
USD/EUR	1.0638	-0.0004	-0.04

Support/Resistance levels for Indian Equity Indices					
	S1	S2	CMP	R1	R2
Sensex	25740	25510	25864	25975	26105
Nifty	7800	7730	7837	7870	7910
Nifty (Fut)	7815	7745	7852	7885	7925

Pivot Level	
Sensex	25848
Nifty	7830

**US:** US market closed narrowly mixed Tuesday, as some encouraging earnings reports offset pressure from declines in oil prices and continued geopolitical concerns. Technically DJIA is presently trading at the 5th leg through Elliot wave count with negative divergence in oscillators.



Nifty gained by 0.40% with Nifty future shaded 1.3 lakh shares in open interest and stock future added 275.6 lakh shares in open interest.

- Nifty PCR increased to 0.72 from 0.71
- Total Nifty Calls added 4.4 lakh shares in open interest.
- Total Nifty Puts added 11.9 lakh shares in open interest.
- Maximum open interest (Nifty) in Calls for Oct. series is at 8200 and 7700 put.
- FII's sold net Rs.492.45 (provisional), while DIIs bought net Rs.783.02 Cr in cash market.
- FII bought net Rs.549.74 Cr. In F&O
- Securities in Ban Period: JINDALSTEL

## Nifty Tracker

PARTICULARS	17/11/2015	16/11/2015	13/11/2015	10/11/2015
Spot	7837.55	7806.6	7762.25	7783.35
% Change in Spot	0.40%	0.57%	-0.27%	-1.67%
Nifty(FUT) Nov	7852.6	7827.25	7774.3	7802.5
Nifty(FUT) Nov Vol.	138223	157193	113362	158968
Nifty(FUT) Nov - OI	16996425	17152425	17551350	17737575
Nifty(FUT) Dec	7894.95	7870.95	7818.75	7848.15
Nifty(FUT) Dec Vol.	6953	8555	6926	8528
Nifty(FUT) Dec - OI	4185825	4159050	4136025	4023150

## Trade Statistics for 17/11/2015

PARTICULARS	NO. OF CONTRACTS	TURNOVER (RS. CR.)	PUT CALL RATIO
NSE Index Futures	2,44,371	13665	-
NSE Stock Futures	4,93,800	24657	-
NSE Index Options	29,04,822	1,69,817.61	-
NSE Stock Options	2,68,101	13734	0.47
NSE F&O Total Turnover	39,11,096	221,874	0.75
NSE Cash Turnover	-	15308	-
BSE Cash Turnover	-	2,519.82	-
Total Turnover	-	239702	-

## FII Corner (F&O)

FII NET BUYING/SELLING & CHANGE IN OPEN INTEREST (Cr. Rupee)						
PARTICULARS	17/11/2015		16/11/2015		13/11/2015	
	Net Buying /Selling	Change In Open interest	Net Buying /Selling	Change In Open interest	Net Buying /Selling	Change In Open interest
Index Future	-139	-91	-646	155	-1250	-612
Index option	945	891	1498	2998	979	3475
Stock Future	-181	734	-358	807	-343	-422
Stock option	-75	268	-76	120	115	547
Total	550	1802	418	4081	-499	2988

## Market Open Interest

ADDITION/REDUCTION IN MARKET OPEN INTEREST					
Contracts	17/11/2015	16/11/2015	13/11/2015	10/11/2015	09/11/2015
Index Futures	-23	-57	-170	-252	-529
Index Options	611	1238	383	-444	687
Stock Futures	1849	2710	3512	6134	196
Stock Options	694	353	1159	1229	1430
F&O Total	3131	4244	4884.337	6667.273	1784.47

## Nifty Option Open Interest Statistics

NIFTY OPTIONS HIGHEST ADDITION IN OPEN INTEREST						
Expiry	Strike	Option Type	Settlement Price	Volume	Open Interest	Change In OI
26-Nov-15	7800	PE	49.45	310182	4346100	389700
31-Dec-15	8200	CE	51.75	14796	1432850	303750
26-Nov-15	7950	CE	30.8	21240	662175	239775
31-Dec-15	8000	CE	116.6	14281	1752925	235050
26-Nov-15	7900	PE	95.8	106794	2313825	226275
31-Dec-15	8300	CE	33.05	10109	978700	190875
31-Dec-15	7900	CE	163	7139	650125	150550
31-Dec-15	8600	CE	8.8	4786	848275	141825
26-Nov-15	8000	CE	19.05	315916	6612900	138975
26-Nov-15	7850	PE	68.7	10064	277950	122625

NIFTY OPTIONS HIGHEST REDUCTION IN OPEN INTEREST						
Expiry	Strike	Option Type	Settlement Price	Volume	Open Interest	Change In OI
26-Nov-15	8300	CE	1.9	61423	4389000	-373200
26-Nov-15	8200	CE	3.05	122235	6772650	-337350
26-Nov-15	8500	CE	1.1	17192	3332250	-306375
26-Nov-15	7700	PE	23.75	238758	5664675	-195900
26-Nov-15	8400	CE	1.3	18052	2719950	-159300
26-Nov-15	8600	CE	1.1	7467	1526625	-111900
26-Nov-15	7500	CE	353.15	3479	352950	-95325
26-Nov-15	7700	CE	171.4	29739	1039050	-94575
26-Nov-15	7500	PE	5.85	80354	3461475	-86850
26-Nov-15	7600	PE	11.4	146191	3119400	-86775

## Stock Option Open Interest Statistics

STOCK OPTIONS WITH HIGHEST ADDITION IN OPEN INTEREST							
Symbol	Expiry	Strike	Option Type	Settl. Price	Volume	Open Interest	Change in OI
UNITECH	26-Nov-15	7.5	CE	0.15	59	19789000	1155000
ICICIBANK	26-Nov-15	270	CE	4.4	3443	4345200	882300
JPASSOCIAT	26-Nov-15	15	CE	0.1	85	15216000	816000
GMRINFRA	26-Nov-15	15	CE	0.2	286	13689000	741000
ADANIPOWER	26-Nov-15	30	CE	0.45	122	3020000	740000
ICICIBANK	26-Nov-15	260	PE	2.1	1570	2050200	671500
IFCI	26-Nov-15	25	PE	0.2	230	3480000	640000
RCOM	26-Nov-15	70	CE	0.8	419	3232000	600000
JPASSOCIAT	26-Nov-15	12.5	PE	0.35	101	6912000	576000
TATASTEEL	26-Nov-15	230	PE	3.35	1438	1330000	564000

STOCK OPTIONS WITH HIGHEST REDUCTION IN OPEN INTEREST							
Symbol	Expiry	Strike	Option Type	Settl. Price	Volume	Open Int.	Change in OI
IFCI	26-Nov-15	30	CE	0.25	679	12760000	-1120000
IFCI	26-Nov-15	27.5	CE	0.85	1233	8840000	-880000
ASHOKLEY	26-Nov-15	95	CE	1.05	1670	7490000	-861000
ASHOKLEY	26-Nov-15	90	CE	3.2	513	3297000	-651000
HINDALCO	26-Nov-15	80	CE	2.75	702	1470000	-530000
TV18BRDCST	26-Nov-15	35	CE	0.7	252	2771000	-527000
DLF	26-Nov-15	140	CE	0.15	196	2220000	-525000
ASHOKLEY	26-Nov-15	100	CE	0.3	586	8694000	-490000
DLF	26-Nov-15	110	CE	4.35	449	1240000	-475000
RCOM	26-Nov-15	90	CE	0.1	42	2864000	-296000

**Disclosure**

- The Research Analysts and /or Ashika Stock Broking Limited do hereby certify that all the views expressed in this research report accurately reflect their views about the subject issuer(s) or securities. Moreover, they also certify the followings:-
- The Research Analyst or Ashika Stock Broking Limited or his/its Associates or his/its relative, has any financial interest in the subject company(ies) covered in this report. **No**
- The Research Analyst or Ashika Stock Broking Limited or his/its Associates or his/its relative, have actual/beneficial ownership of 1% or more in the subject company, at the end of the month immediately preceding the date of the publication of the research report. **No**
- The Research Analyst or Ashika Stock Broking Limited or his/its Associates or his/its relatives has any material conflict of interest at the time of publication of the research report. **No**
- The Research Analyst or Ashika Stock Broking Limited or his/its Associates have received compensation for investment banking or merchant banking or brokerage services or for product other than for investment banking or merchant banking or brokerage services from the companies covered in this report in the past 12 months. **No**
- The Research Analyst or Ashika Stock Broking Limited or his/its Associates have managed or co managed in the previous 12 months any private or public offering of securities for the company(ies) covered in this report. **No**
- The Research Analyst or Ashika Stock Broking Limited or his/its Associates have received any compensation or other benefits from the company(ies) covered in this report or any third party in connection with the Research Report. **No**
- The Research Analyst has served as an officer, director or employee of the company(ies) covered in the research report. **No**
- The Research Analyst or Ashika Stock Broking Limited has been engaged in Market making activity of the company(ies) covered in the research report. **No**

**Disclaimer**

This report is for the personal information of the authorized recipient and does not construe to be any investment, legal or taxation advice to you. Ashika Stock Broking Ltd. is not soliciting any action based upon it. This report is not for public distribution and has been furnished to you solely for your information and should not be reproduced or redistributed to any other person in any form. The report is based upon information that we consider reliable, but we do not represent that it is accurate or complete, and it should not be relied upon such. Ashika Stock Broking Ltd. or any of its affiliates or employees shall not be in anyway responsible for any loss or damage that may arise to any person from any inadvertent error in the information contained in this report. Ashika Stock Broking Ltd., or any of its affiliates or employees do not provide, at any time, any express or implied warranty of any kind, regarding any matter pertaining to this report, including without limitation the implied warranties of merchantability, fitness for a particular purpose, and non-infringement. The recipients of this report should rely on their own investigations.