

Technical Report

Technical & Derivative Report

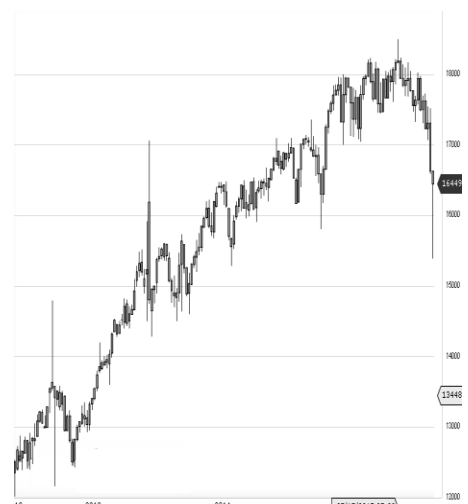
World Indices	LTP	Daily Ch(Pts)	Daily Ch(%)
Dow Jones	16279	-50	-0.31
Nasdaq	4752	-3	-0.08
S&P 500	1938	-3	-0.20
FTSE 100	6032	96	1.62
DAX	9612	41	0.44
Hang Seng	21246	-56	-0.26
Nikkei	17741	-328	-1.82
Sensex	25822	171	0.67
Nifty	7845	33	0.43

Commodity /Forex	LTP	Daily Ch(Pts)	Daily Ch(%)
Gold (\$/Oz)	1131.00	-0.50	-0.04
Silver (\$/Oz)	14.79	-	0.01
Copper(USD/lb.)	229.55	-	-
Brent Crude(USD/bbl)	47.96	0.21	0.44
USD/INR	65.98	0.10	0.16
USD/YEN	120.19	-0.09	-0.07
USD/EUR	1.1171	-0.0015	-0.13

Support/Resistance levels for Indian Equity Indices					
	S1	S2	CMP	R1	R2
Sensex	25670	25505	25822	25905	26070
Nifty	7800	7750	7845	7870	7920
Nifty (Fut)	7810	7760	7855	7880	7930

Pivot Level	
Sensex	25714
Nifty	7817

US: US market closed mildly lower Wednesday in light volume trade as investors eyed oil and commodity prices, amid weak manufacturing China data. Technically DJIA is presently trading at the 5th leg through Elliot wave count with negative divergence in oscillators.



Closing Brief

Volatility was the order of the day as Indian stocks bounced back from an initial decline triggered by weakness in Asian stocks. Earlier, the Sensex and the Nifty fell more than 1% each in early trade on weakness in Asian stocks triggered by disappointing Chinese manufacturing data.

Technical Build up

- ❖ Bullish candle with decrease in volume.
- ❖ Buy crossover in oscillators.
- ❖ Upper band of Bollinger exist at 8056
- ❖ Crucial moving average of 20/50 SMA are at 7828 and 8200
- ❖ 200 SMA trend deciding level exist at 8392

Outlook for the day

Indian equity ended the session on a higher note, the recover was supported by rebound in European market and after e Chinese President Xi Jinping comments on not devaluing its currency Yuan to boost exports. On the technical front Nifty continues to remain confined within a range and on the upside now 8050 would remain a strong resistance level for the coming few weeks. However strength will be intact if Nifty is able to maintain above 7820 for an upside target of 7930-7950. On the F&O front rollover was to the extent of 49% Indian VIX increased marginally the previous day. On the option front writing activity seems to have started for lower strike price put option of 7600 & 7700 while call option of October expiry seems to have gathered interest in 8300 & 8400 strike prices.



Increase in OI with Increase in Price (Long Buildup)					
Symbol	Prev OI	Curr OI	OI Chg (%)	Curr Pr.	Pr.Chg (%)
IBULHS					
GFIN	10793	13718	27.1	725.60	3.50
SOUTHB					
ANK	1302	1621	24.5	21.20	1.40
NTPC	8194	9503	16	121.65	0.60
PETRON					
ET	1306	1469	12.5	177.80	0.80
EICHER					
MOT	1352	1513	11.9	18350.0	0.20

Increase in OI with Decrease in Price (Short Buildup)					
Symbol	Prev OI	Curr OI	OI Chg (%)	Curr Pr.	Pr.Chg (%)
COLPAL	5635	10535	86.9	938.10	-50.7
DIVISLA					
B	6876	9743	41.7	1118.4	-49.0
PTC	2705	3814	41	57.45	-1.7
UBL	1324	1566	18.3	839.5	-0.8
ZEEL	5964	6949	16.5	388.4	-0.3

Nifty gained by 0.43% with Nifty future shaded 1.4 lakh shares in open interest and stock future added 171.2 lakh shares in open interest.

- Nifty PCR remained unchanged at 0.94
- Total Nifty Calls added 14.9 lakh shares in open interest.
- Total Nifty Puts added 15.6 lakh shares in open interest.
- Maximum open interest (Nifty) in Calls for Apr. series is at 8000 and 7600 put.
- FII's sold net Rs.1330.12 (provisional), while DIIs bought net Rs.891.36 Cr in cash market.
- FII sold net Rs.137.42 Cr. In F&O
- Securities in Ban Period: NIL

Nifty Tracker

PARTICULARS	23/09/2015	22/09/2015	21/09/2015	18/09/2015
Spot	7845.95	7812	7977.1	7981.8
% Change in Spot	0.43%	-2.07%	-0.06%	1.05%
Nifty(FUT) Sep	7855.45	7797.1	7980.05	7982.55
Nifty(FUT) Sep Vol.	713391	870824	576788	721290
Nifty(FUT) Sep - OI	15349300	17766700	19116950	21852050
Nifty(FUT) Oct	7888.75	7832.25	8018	8018.7
Nifty(FUT) Oct Vol.	316497	389409	218333	94184
Nifty(FUT) Oct - OI	14513300	12251500	6789875	3007100

Trade Statistics for 23/09/2015

PARTICULARS	NO. OF CONTRACTS	TURNOVER (RS. CR.)	PUT CALL RATIO
NSE Index Futures	13,41,962	33521	-
NSE Stock Futures	24,34,267	60764	-
NSE Index Options	1,73,90,193	3,77,445.61	-
NSE Stock Options	4,54,930	11783	0.59
NSE F&O Total Turnover	2,16,21,352	483,513	1.01
NSE Cash Turnover	-	15718	-
BSE Cash Turnover	-	2,474.90	-
Total Turnover	-	501706	-

FII Corner (F&O)

FII NET BUYING/SELLING & CHANGE IN OPEN INTEREST (Cr. Rupee)						
PARTICULARS	23/09/2015		22/09/2015		21/09/2015	
	Net Buying /Selling	Change In Open interest	Net Buying /Selling	Change In Open interest	Net Buying /Selling	Change In Open interest
Index Future	173	1248	-697	3449	-1836	2318
Index option	-25	1471	1463	1323	1925	1106
Stock Future	-263	1838	1248	172	317	1547
Stock option	-22	-180	-115	-158	-48	2
Total	-137	4377	1899	4786	358	4973

Market Open Interest

ADDITION/REDUCTION IN MARKET OPEN INTEREST					
Contracts	23/09/2015	22/09/2015	21/09/2015	18/09/2015	16/09/2015
Index Futures	753	2980	1168	1439	-399
Index Options	761	-180	2386	2132	372
Stock Futures	2609	5325	4340	-3873	4598
Stock Options	218	235	471	19	198
F&O Total	4341	8360	8365.28	-283.14	4769.65

Nifty Option Open Interest Statistics

NIFTY OPTIONS HIGHEST ADDITION IN OPEN INTEREST						
Expiry	Strike	Option Type	Settlement Price	Volume	Open Interest	Change In OI
24-Sep-15	7650	PE	4.45	233429	1302525	1083525
29-Oct-15	8400	CE	23.7	95565	1620450	676700
24-Sep-15	7700	PE	6.8	1794237	3860700	671750
29-Oct-15	8300	CE	36.55	121537	2439100	613175
29-Oct-15	8200	CE	56.5	156027	2375650	537650
24-Sep-15	7600	PE	2.4	1011830	4209825	514400
24-Sep-15	7750	PE	11.45	399367	976750	468475
24-Sep-15	7850	PE	35.15	253542	1094925	448275
29-Oct-15	7600	PE	91.9	119117	1996850	426225
29-Oct-15	8100	CE	85.15	120959	1614525	356975

NIFTY OPTIONS HIGHEST REDUCTION IN OPEN INTEREST						
Expiry	Strike	Option Type	Settlement Price	Volume	Open Interest	Change In OI
24-Sep-15	7800	PE	20.95	1745251	3831775	-1110850
24-Sep-15	7500	PE	1.2	552102	3224575	-735900
24-Sep-15	7800	CE	72.1	1656884	2434150	-734250
24-Sep-15	8000	PE	144.95	101035	2019125	-534950
24-Sep-15	8100	CE	0.8	335902	3309475	-467825
24-Sep-15	8200	CE	0.5	151881	2953675	-453450
24-Sep-15	8200	PE	342.35	24645	964625	-385475
24-Sep-15	7900	PE	64.15	492228	1832525	-280450
24-Sep-15	8100	PE	242.8	24574	823800	-250050
24-Sep-15	9000	PE	1139.2	8915	290975	-177725

Stock Option Open Interest Statistics

STOCK OPTIONS WITH HIGHEST ADDITION IN OPEN INTEREST							
Symbol	Expiry	Strike	Option Type	Settl. Price	Volume	Open Interest	Change in OI
IDBI	24-Sep-15	70	PE	0.45	2877	2752000	2384000
JPASSOCIAT	24-Sep-15	10	PE	0.05	688	8256000	1888000
JPASSOCIAT	29-Oct-15	12.5	CE	1	812	3168000	1272000
IDBI	24-Sep-15	75	CE	0.8	4982	2268000	1240000
UNITECH	29-Oct-15	7.5	CE	0.35	155	5995000	902000
IFCI	29-Oct-15	30	CE	0.05	104	1032000	832000
IDBI	24-Sep-15	80	CE	0.15	1360	996000	792000
DLF	24-Sep-15	125	PE	1.05	1482	1496000	778000
IDBI	24-Sep-15	67.5	PE	0.15	1163	1232000	668000
NHPC	29-Oct-15	17.5	PE	1.15	58	726000	627000

STOCK OPTIONS WITH HIGHEST REDUCTION IN OPEN INTEREST							
Symbol	Expiry	Strike	Option Type	Settl. Price	Volume	Open Int.	Change in OI
JPASSOCIAT	24-Sep-15	10	CE	1.8	940	8000000	-2216000
SBIN	24-Sep-15	240	CE	2.25	9812	2059000	-1148000
ASHOKLEY	24-Sep-15	90	CE	1.45	4356	4248000	-760000
IDBI	24-Sep-15	70	CE	3.55	3352	1828000	-752000
IDBI	24-Sep-15	65	CE	9.55	432	496000	-724000
ASHOKLEY	24-Sep-15	97.5	CE	0.05	216	1328000	-432000
SBIN	24-Sep-15	250	CE	0.25	2431	2951000	-359000
DLF	24-Sep-15	140	CE	0.1	232	1640000	-308000
RCOM	24-Sep-15	67.5	CE	0.25	495	1136000	-296000
ASHOKLEY	24-Sep-15	100	CE	0.05	483	5300000	-276000

Disclosure

- The Research Analysts and /or Ashika Stock Broking Limited do hereby certify that all the views expressed in this research report accurately reflect their views about the subject issuer(s) or securities. Moreover, they also certify the followings:-
- The Research Analyst or Ashika Stock Broking Limited or his/its Associates or his/its relative, has any financial interest in the subject company(ies) covered in this report. **No**
- The Research Analyst or Ashika Stock Broking Limited or his/its Associates or his/its relative, have actual/beneficial ownership of 1% or more in the subject company, at the end of the month immediately preceding the date of the publication of the research report. **No**
- The Research Analyst or Ashika Stock Broking Limited or his/its Associates or his/its relatives has any material conflict of interest at the time of publication of the research report. **No**
- The Research Analyst or Ashika Stock Broking Limited or his/its Associates have received compensation for investment banking or merchant banking or brokerage services or for product other than for investment banking or merchant banking or brokerage services from the companies covered in this report in the past 12 months. **No**
- The Research Analyst or Ashika Stock Broking Limited or his/its Associates have managed or co managed in the previous 12 months any private or public offering of securities for the company(ies) covered in this report. **No**
- The Research Analyst or Ashika Stock Broking Limited or his/its Associates have received any compensation or other benefits from the company(ies) covered in this report or any third party in connection with the Research Report. **No**
- The Research Analyst has served as an officer, director or employee of the company(ies) covered in the research report. **No**
- The Research Analyst or Ashika Stock Broking Limited has been engaged in Market making activity of the company(ies) covered in the research report. **No**

Disclaimer

This report is for the personal information of the authorized recipient and does not construe to be any investment, legal or taxation advice to you. Ashika Stock Broking Ltd. is not soliciting any action based upon it. This report is not for public distribution and has been furnished to you solely for your information and should not be reproduced or redistributed to any other person in any form. The report is based upon information that we consider reliable, but we do not represent that it is accurate or complete, and it should not be relied upon such. Ashika Stock Broking Ltd. or any of its affiliates or employees shall not be in anyway responsible for any loss or damage that may arise to any person from any inadvertent error in the information contained in this report. Ashika Stock Broking Ltd., or any of its affiliates or employees do not provide, at any time, any express or implied warranty of any kind, regarding any matter pertaining to this report, including without limitation the implied warranties of merchantability, fitness for a particular purpose, and non-infringement. The recipients of this report should rely on their own investigations.