

Technical Report

Closing Brief

Key benchmark indices eked out small gains amid intraday volatility. The market breadth indicating the overall health of the market was positive. Among the sectoral indices on BSE, the S&P BSE Metal index, the S&P BSE Bankex index and the S&P BSE Capital Goods index underperformed the Sensex.

Technical Build up

- ❖ Bullish candle with increase in volume.
- ❖ Buy crossover in oscillators.
- ❖ Upper band of Bollinger exist at 8059
- ❖ Crucial moving average of 20/50 SMA are at 7831 and 8186
- ❖ 200 SMA trend deciding level exist at 8390

Outlook for the day

Indian equity market ended the session on a higher note on the expiry of September derivatives contracts. Indian market sentiments may remain volatile ahead the monetary policy meet. scheduled for 29th September, 2015. Investors would keep a watch to see if the RBI would lower the interest rates to bolster the economy and spur a recovery in company earnings. On the technical front Nifty continues to remain confined within a range and on the upside now 8050 would remain a strong resistance level for the coming few weeks. However strength will be intact if Nifty is able to maintain above 7820 for an upside target of 7930-7950. On the F&O front rollover for the month of Sept. stood at 61% v/s 66% the previous also marginally below the 3-months average. On the option front October series started with highest OI build up in 7500 & 7800 strike price put option followed by 7900 strike price call option.



Technical & Derivative Report

World Indices	LTP	Daily Ch(Pts)	Daily Ch(%)
Dow Jones	16314	113	0.70
Nasdaq	4686	-47	-1.01
S&P 500	1931	-0.90	-0.05
FTSE 100	6109	147	2.47
DAX	9688	260	2.77
Hang Seng	21186	90	0.43
Nikkei	17705	-174	-0.98
Sensex	25863	40	0.16
Nifty	7868	22	0.29

Commodity /Forex	LTP	Daily Ch(Pts)	Daily Ch(%)
Gold (\$/Oz)	1144.50	-1.10	-0.10
Silver (\$/Oz)	15.06	-0.05	-0.34
Copper(USD/lb.)	229.25	0.90	0.39
Brent Crude(USD/bbl)	48.32	-0.28	-0.58
USD/INR	66.15	0.16	0.26
USD/YEN	120.40	-0.19	-0.16
USD/EUR	1.1189	-0.0006	-0.05

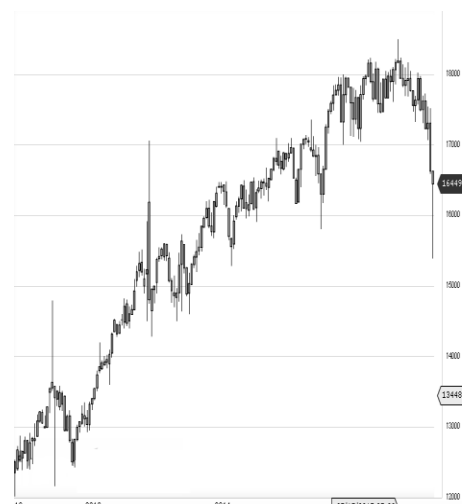
Support/Resistance levels for Indian Equity Indices

	S1	S2	CMP	R1	R2
Sensex	25635	25500	25863	26000	26170
Nifty	7800	7760	7868	7910	7960
Nifty (Fut)	7827	7787	7895	7940	7990

Pivot Level

Sensex	25828
Nifty	7855

US: US market closed mixed Friday, pressured by a plunge in biotechs, as investors digested Nike earnings and Fed Chair Janet Yellen's remarks. Technically DJIA is presently trading at the 5th leg through Elliot wave count with negative divergence in oscillators.



Increase in OI with Increase in Price (Long Buildup)					
Symbol	Prev OI	Curr OI	OI Chg (%)	Curr Pr.	Pr.Chg (%)
OIL	623	1505	141.6	432.6	0.60
PIDILITI					
ND	461	950	106.1	558.6	0.20
UNIONB					
ANK	2065	4045	95.9	181.0	0.30
MINDTR					
EE	416	800	92.3	1555.0	4.30
CEATLT					
D	1405	2681	90.8	1271.0	1.70

Increase in OI with Decrease in Price (Short Buildup)					
Symbol	Prev OI	Curr OI	OI Chg (%)	Curr Pr.	Pr.Chg (%)
PETRON					
ET	788	1596	102.5	171.95	-2.7
CASTRO					
LIND	830	1554	87.2	439.05	-1.2
EICHER					
MOT	1146	1942	69.5	17975	-2.3
DISHTV	3309	5597	69.1	114.25	-0.9
ABIRLA					
NUVO	2518	4258	69.1	2150.5	-

Nifty gained by 0.29% on the last day of September expiry. Nifty declined by 1.02% in Sept. expiry against a decline of 5.61% in Aug(expiry to expiry). Nifty started the month with 312 lakh shares in open interest and stock future with 273 lakh shares in open interest.

- Nifty PCR is at 0.99 against 0.77 on the first day of Oct expiry.
- Total Nifty Calls started with 876 lakh shares in open interest against 913 lakh shares in last month.
- Total Nifty Puts started with 872 lakh shares in open interest against 703 lakh shares in last month.
- Maximum open interest (Nifty) in Calls for Oct. series is at 9000 and 8200 put.
- FII's sold net Rs.115.1(provisional), while DIIs bought net Rs.50.67 Cr in cash market.
- FII bought net Rs.3011.27 Cr. In F&O
- Securities in Ban Period: NIL

Nifty Tracker

PARTICULARS	24/09/2015	23/09/2015	22/09/2015	21/09/2015
Spot	7868.5	7845.95	7812	7977.1
% Change in Spot	0.29%	0.43%	-2.07%	-0.06%
Nifty(FUT) Oct	7895.7	7888.75	7832.25	8018
Nifty(FUT) Oct Vol.	436425	316497	389409	218333
Nifty(FUT) Oct - OI	18368400	14513300	12251500	6789875
Nifty(FUT) Nov	7929.25	0	0	0
Nifty(FUT) Nov Vol.	2332	0	0	0
Nifty(FUT) Nov - OI	792075	0	0	0

Trade Statistics for 24/09/2015

PARTICULARS	NO. OF CONTRACTS	TURNOVER (RS. CR.)	PUT CALL RATIO
NSE Index Futures	13,60,071	32709	-
NSE Stock Futures	23,79,596	59975	-
NSE Index Options	2,05,66,747	4,52,346.37	-
NSE Stock Options	4,80,130	13211	0.57
NSE F&O Total Turnover	2,47,86,544	558,242	1.07
NSE Cash Turnover	-	19830	-
BSE Cash Turnover	-	2,567.09	-
Total Turnover	-	580639	-

FII Corner (F&O)

FII NET BUYING/SELLING & CHANGE IN OPEN INTEREST (Cr. Rupee)						
PARTICULARS	24/09/2015		23/09/2015		22/09/2015	
	Net Buying /Selling	Change In Open interest	Net Buying /Selling	Change In Open interest	Net Buying /Selling	Change In Open interest
Index Future	-633	-15953	173	1248	-697	3449
Index option	3643	-49882	-25	1471	1463	1323
Stock Future	39	-9437	-263	1838	1248	172
Stock option	-39	-2283	-22	-180	-115	-158
Total	3010	-77555	-137	4377	1899	4786

Market Open Interest

ADDITION/REDUCTION IN MARKET OPEN INTEREST					
Contracts	24/09/2015	23/09/2015	22/09/2015	21/09/2015	18/09/2015
Index Futures	513	753	2980	1168	1439
Index Options	1831	761	-180	2386	2132
Stock Futures	8979	2609	5325	4340	-3873
Stock Options	864	218	235	471	19
F&O Total	12187	4341	8360.09	8365.28	-283.14

Nifty Option Open Interest Statistics

NIFTY OPTIONS HIGHEST ADDITION IN OPEN INTEREST						
Expiry	Strike	Option Type	Settlement Price	Volume	Open Interest	Change In OI
29-Oct-15	7500	PE	72.65	149172	3217875	897925
29-Oct-15	7400	PE	55.3	96195	3007325	710725
29-Oct-15	7800	PE	149.65	156586	3256425	597900
29-Oct-15	7900	CE	178.15	131208	1302575	551800
29-Oct-15	7900	PE	186.45	96704	1257450	486850
29-Oct-15	7700	PE	119.05	108168	1968325	399600
29-Oct-15	7600	PE	93.45	107030	2392975	396125
29-Oct-15	8500	CE	12.2	71083	1752000	381425
29-Oct-15	8000	CE	127.15	169753	2359250	337800
29-Oct-15	7000	PE	17.85	41592	1240875	327800

NIFTY OPTIONS HIGHEST REDUCTION IN OPEN INTEREST						
Expiry	Strike	Option Type	Settlement Price	Volume	Open Interest	Change In OI
29-Oct-15	9100	CE	1.45	2297	206875	-9975
26-Nov-15	8000	PE	268.3	229	119625	-2775
26-Nov-15	8500	CE	39.3	1368	470250	-2700
26-Nov-15	8600	CE	26.8	503	147675	-1725
29-Oct-15	8350	CE	26.15	105	3375	-750
26-Nov-15	7500	CE	523	22	142575	-450
29-Oct-15	8550	CE	7.5	129	50	-175
26-Nov-15	8500	PE	575	3	675	-75
29-Oct-15	7250	PE	34.5	14	1700	-50
29-Oct-15	6100	CE	1813.55	0	100	0

Stock Option Open Interest Statistics

STOCK OPTIONS WITH HIGHEST ADDITION IN OPEN INTEREST							
Symbol	Expiry	Strike	Option Type	Settl. Price	Volume	Open Interest	Change in OI
UNITECH	29-Oct-15	7.5	CE	0.35	248	7788000	1793000
IFCI	29-Oct-15	22.5	CE	0.95	207	1648000	920000
NHPC	29-Oct-15	15	PE	0.1	70	990000	715000
ITC	29-Oct-15	330	CE	5.55	1102	831000	700000
SOUTHBANK	29-Oct-15	25	CE	0.95	163	783000	621000
JPASSOCIAT	29-Oct-15	30	PE	18.45	75	600000	600000
IFCI	29-Oct-15	22.5	PE	1.5	76	680000	544000
ASHOKLEY	29-Oct-15	100	CE	2.15	417	1700000	496000
JPASSOCIAT	29-Oct-15	12.5	CE	0.85	266	3656000	488000
NHPC	29-Oct-15	17.5	PE	1	42	1188000	462000

STOCK OPTIONS WITH HIGHEST REDUCTION IN OPEN INTEREST							
Symbol	Expiry	Strike	Option Type	Settl. Price	Volume	Open Int.	Change in OI
ADANIPOWER	29-Oct-15	20	CE	5.3	42	800000	-160000
JPASSOCIAT	29-Oct-15	7.5	CE	4.15	21	2216000	-88000
IOB	29-Oct-15	30	PE	0.35	12	104000	-48000
AUROPHARMA	29-Oct-15	700	PE	17.15	275	164000	-37500
SAIL	29-Oct-15	42.5	PE	0.35	7	52000	-24000
INFY	29-Oct-15	1100	CE	66.2	500	88500	-23750
HDIL	29-Oct-15	80	PE	17.6	68	148000	-22000
RELCAPITAL	29-Oct-15	320	PE	7.4	142	62500	-17500
UCOBANK	29-Oct-15	47.5	CE	2.95	43	128000	-16000
HDFCBANK	29-Oct-15	1040	PE	23.05	140	33250	-13750

Disclosure

- The Research Analysts and /or Ashika Stock Broking Limited do hereby certify that all the views expressed in this research report accurately reflect their views about the subject issuer(s) or securities. Moreover, they also certify the followings:-
- The Research Analyst or Ashika Stock Broking Limited or his/its Associates or his/its relative, has any financial interest in the subject company(ies) covered in this report. **No**
- The Research Analyst or Ashika Stock Broking Limited or his/its Associates or his/its relative, have actual/beneficial ownership of 1% or more in the subject company, at the end of the month immediately preceding the date of the publication of the research report. **No**
- The Research Analyst or Ashika Stock Broking Limited or his/its Associates or his/its relatives has any material conflict of interest at the time of publication of the research report. **No**
- The Research Analyst or Ashika Stock Broking Limited or his/its Associates have received compensation for investment banking or merchant banking or brokerage services or for product other than for investment banking or merchant banking or brokerage services from the companies covered in this report in the past 12 months. **No**
- The Research Analyst or Ashika Stock Broking Limited or his/its Associates have managed or co managed in the previous 12 months any private or public offering of securities for the company(ies) covered in this report. **No**
- The Research Analyst or Ashika Stock Broking Limited or his/its Associates have received any compensation or other benefits from the company(ies) covered in this report or any third party in connection with the Research Report. **No**
- The Research Analyst has served as an officer, director or employee of the company(ies) covered in the research report. **No**
- The Research Analyst or Ashika Stock Broking Limited has been engaged in Market making activity of the company(ies) covered in the research report. **No**

Disclaimer

This report is for the personal information of the authorized recipient and does not construe to be any investment, legal or taxation advice to you. Ashika Stock Broking Ltd. is not soliciting any action based upon it. This report is not for public distribution and has been furnished to you solely for your information and should not be reproduced or redistributed to any other person in any form. The report is based upon information that we consider reliable, but we do not represent that it is accurate or complete, and it should not be relied upon such. Ashika Stock Broking Ltd. or any of its affiliates or employees shall not be in anyway responsible for any loss or damage that may arise to any person from any inadvertent error in the information contained in this report. Ashika Stock Broking Ltd., or any of its affiliates or employees do not provide, at any time, any express or implied warranty of any kind, regarding any matter pertaining to this report, including without limitation the implied warranties of merchantability, fitness for a particular purpose, and non-infringement. The recipients of this report should rely on their own investigations.